

Today's Market Overview



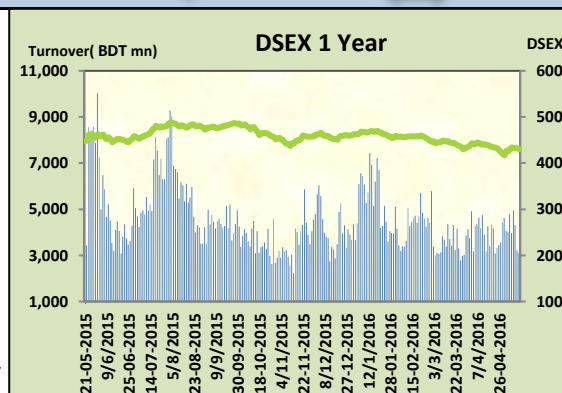
Thursday, May 12, 2016

DSEX	4,298.65	-0.46%	Issues Traded	Advanced	Declined	Unchanged
Turnover (BDT mn)	3,112.90	-3.33%		106	157	46

Market continued the losing streak for the consecutive two days with a very slothful turnover. The premier bourse of the nation opened below yesterday's mark and couldn't cross the previous day's DSEX mark for a single moment, moreover it plunged below 4300 which created fear among the investors and thus led to a poor turnover. Major sectors failed again to keep the momentum and investors from these sectors were in harsh while some small cap stocks succeeded to gain. Among the major sectors only Food obtained the green mark and Bank, Power & NBFI were in severity. Participation was poor throughout the session and crossed only 3 billion. Other two Indices DS30 & DSES the shariah based index both performed poor. Paper was the best gainer followed by Tannery and Mutual Fund while Bank was the worst loser followed by Engineering & NBFI.

The general gauge DSEX ended at 4298.65 with a decline of -0.46% which cut 19.80 points from the broad DSEX. The Turnover declined slightly by -3.3% which was 107 Million BDT poorer than that of previous day and finally finished the mark at 3112.90 million BDT. A total of 106 issues advanced with 157 declined and 46 remained unchanged. Sectors that improved were: Ceramics (+0.2%) Food (+0.3%) Mutual Fund (+0.9%) Paper (+3.8%) Tannery (+2.2%) & Sectors that declined were: Bank (-1.6%) Cement (-0.3%) Engineering (-1.0%) Insurance (-0.2%) NBFI (-0.8%) Pharmaceuticals (-0.2%) Power (-0.4%) Telecom (-0.1%) Service (-1.1%) Textiles (-0.2%)

LINDEBD topped in the Volume chart with a turnover of 21.58 BDT crore. TOSRIFA ranked top in gainer chart with a price hike of +9.5 % and DHAKABANK topped in the loser chart with a decline of -13.1% from its prevailing price. BATBC led the way in the index mover chart while ISLAMIBANK played the shatter part.



Index Scenario				Market Highlights				
	INDEX	Change	% Changes	DSEX 52 week H/L	4874/3960	Market P/E (LTM)	12.73	
DSEX	4298.65	(19.80)	-0.46%	DSEX Week H/L	4282/4171	M.Cap	3056439.2	
DSES	1056.09	(6.40)	-0.60%	Group Performances				
DS30	1667.25	(6.29)	-0.38%	Category	Mkt Cap (mn.)	Δ % M.Cap	Turnover BDT (mn)	Δ % Turnover
Turnover Scenario				Group A	2,332,637.93	-0.4%	2,446.53	-11.5%
Today's Turnover (mn.)	Change In BDT (mn.)	% Change		Group B	10,492.71	-0.4%	47.74	44.7%
3112.90	(107)	-3.3%		Group N	40,674.96	-0.9%	201.20	-17.7%
				Group Z	37,758.94	0.2%	59.68	-33.6%

Top Ten Volume (in BDT. crore)										
Stock	TT	YT	AT	% Δ in Turnover	TT/AT	CP	YP	% Δ P	Number of shares	Public Holding
LINDEBD	21.58	7.92	7.09	172.4%	204.3%	1486.9	1437.5	3.4%	274,244,180.0	9%
UPGDCL	12.97	23.29	16.96	-44.3%	-23.5%	165.2	167.9	-1.6%	362,944,698.6	5%
BSRMLTD	11.20	14.23	16.72	-21.3%	-33.0%	137.4	135.8	1.2%	15,218,280.0	19%
MJLBD	10.14	11.71	19.44	-13.4%	-47.9%	106.8	108.3	-1.4%	341,775,000.0	13%
BSRMSTEEL	7.86	14.93	8.63	-47.3%	-8.9%	96.4	99.5	-3.1%	190,686,141.8	9%
BSC	7.66	2.98	1.83	157.4%	318.7%	380.7	363.7	4.7%	276,739,950.1	61%
DOREENPWR	7.29	9.67	8.55	-24.7%	-14.8%	56.2	56.4	-0.4%	137,132,037.0	19%
FEKDIL	6.43	9.77	4.05	-34.3%	58.8%	24.4	23.6	3.4%	190,417,988.2	27%
OLYMPIC	6.36	3.39	5.77	87.4%	10.2%	321.3	321.8	-0.2%	294,400,000.0	24%
SPCL	6.25	6.30	3.53	-0.9%	77.3%	114.6	115.6	-0.9%	54,285,000.0	38%

TT= Today's Turnover in crore, YT= Yesterday's Turnover in Crore, AT= Average of Last 20 day's Turnover, CP= Current Price, YP= Yesterday's Price, % Δ P= percentage change in price

 **Top Ten Gainer**

Top Ten Loser 

Stock	CP	YP	AP	% Δ P	% Δ in P from AP	Stock	CP	YP	AP	% Δ P	% Δ in P from AP
TOSRIFA	16.2	14.8	15.275	9.5%	6.1%	DHAKABANK	13.90	16.00	15.98	-13.1%	-13.0%
SAMATALETH	26.8	24.5	24.615	9.4%	8.9%	ISLAMIBANK	23.10	25.60	24.17	-9.8%	-4.4%
JUTESPINN	52.2	48.5	51.62	7.6%	1.1%	REPUBLIC	11.70	12.80	13.16	-8.6%	-11.1%
MONNOCERA	37.1	35	36.46	6.0%	1.8%	IBBLPBOND	925.50	996.00	987.30	-7.1%	-6.3%
MAKSONSPIN	7.2	6.8	7.07	5.9%	1.8%	AZIZPIPES	55.70	59.40	47.21	-6.2%	18.0%
EXIM1STMF	5.8	5.5	5.82	5.5%	-0.3%	ZAHINTEX	16.90	17.90	18.00	-5.6%	-6.1%
ICBSONALII	6.1	5.8	5.92	5.2%	3.0%	KAY&QUE	26.50	28.00	20.79	-5.4%	27.5%
PRIMEFIN	8.4	8	8.2	5.0%	2.4%	FINEFOODS	7.80	8.20	7.78	-4.9%	0.3%
HAKKANIPUL	48	45.8	44.065	4.8%	8.9%	ICBEPMF1S1	6.30	6.60	6.66	-4.5%	-5.4%
BSC	380.7	363.7	327.235	4.7%	16.3%	GEMINISEA	906.00	946.50	958.57	-4.3%	-5.5%

AP= Average Price of last 20 day,% Δ in P from AP= percentage change in price from the 20-day average price

Industry /Sectors overview (Amounts in BDT. Crore)

Sector	Trade Volume		MKT Turnover %		% Δ in Turnover	Market Capitalization		% of Total MC		% Δ in MC
	Today	Yesterday	Today	Yesterday		Today	Yesterday	Today	Yesterday	
Bank	17.58	17.83	0.06	0.06	-1.4%	36034.18	36631.95	14.91%	15.10%	-1.6%
Cement	8.60	11.42	0.03	0.04	-24.7%	12591.34	12631.48	5.21%	5.21%	-0.3%
Ceramics	2.58	2.39	0.01	0.01	8.0%	2387.63	2383.88	0.99%	0.98%	0.2%
Engineering	48.88	66.41	0.18	0.21	-26.4%	14481.01	14622.53	5.99%	6.03%	-1.0%
Food & Allied Product	11.70	24.56	0.04	0.08	-52.4%	24051.14	23990.19	9.95%	9.89%	0.3%
Insurance	4.14	5.25	0.02	0.02	-21.2%	6741.62	6755.59	2.79%	2.78%	-0.2%
IT	2.09	3.05	0.01	0.01	-31.5%	910.51	910.21	0.38%	0.38%	0.0%
Jute	0.33	0.32	0.00	0.00	4.6%	79.64	79.81	0.03%	0.03%	-0.2%
Miscellaneous	15.93	13.00	0.06	0.04	22.6%	8219.88	8210.33	3.40%	3.38%	0.1%
Mutual Fund	2.46	2.00	0.01	0.01	23.1%	3590.32	3559.52	1.49%	1.47%	0.9%
NBFI	14.32	13.45	0.05	0.04	6.5%	7723.04	7788.54	3.20%	3.21%	-0.8%
Paper & Printing	1.04	0.38	0.00	0.00	173.9%	152.55	146.91	0.06%	0.06%	3.8%
Pharmaceuticals & Chemicals	30.81	30.88	0.11	0.10	-0.2%	40690.94	40758.78	16.84%	16.80%	-0.2%
Power & Energy	74.79	77.44	0.27	0.25	-3.4%	34923.53	35064.12	14.45%	14.45%	-0.4%
Service & Real Estate	3.40	3.51	0.01	0.01	-3.2%	1707.16	1725.41	0.71%	0.71%	-1.1%
Tannery	3.74	5.04	0.01	0.02	-25.8%	2260.66	2212.85	0.94%	0.91%	2.2%
Telecommunication	3.61	2.59	0.01	0.01	39.2%	35833.49	35881.93	14.83%	14.79%	-0.1%
Textile	23.50	25.52	0.09	0.08	-7.9%	7276.25	7292.87	3.01%	3.01%	-0.2%
Travel & Leisure	5.32	5.84	0.02	0.02	-8.9%	1990.67	1999.50	0.82%	0.82%	-0.4%

MC= Market Capitalization, % Δ in Turnover= change in turnover from last day, % Δ in MC= change in Market cap from last day

Index Movers	Index Shakers	Sector wise P/E (Fd.)			
BATBC	ISLAMIBANK	Bank	9.52	NBFI	17.94
LINDEBD	DHAKABANK	Cement	25.15	Paper & Printing	98.94
RENATA	BSRMSTEEL	Ceramics	34.76	Pharmaceuticals & Chemicals	25.03
BATASHOE	UPGDCL	Engineering	29.83	Power & Energy	15.67
DESCO	POWERGRID	Food & Allied Product	25.41	Service & Real Estate	28.71
BSRMLTD	MJLBD	Insurance	12.87	Tannery	35.49
JAMUNAOIL	BANKASIA	IT	49.00	Telecommunication	21.69
HEIDELBCEM	SQURPHARMA	Jute	410.79	Textile	16.65
BSC	UTTARAFIN	Miscellaneous	28.11	Travel & Leisure	17.34
ABBANK	GP				

Important News

Company News:

BSC: Q3 Financials: (Q3 Un-audited): EPS was Tk. 2.55 for January-March, 2016 as against Tk. 8.38 for January-March, 2015. EPS was Tk. 8.00 for July, 2015-March, 2016 as against Tk. 1.97 for July, 2014-March, 2015. NAV per share was Tk. 610.83 as of March 31, 2016 and Tk. 602.84 as of June 30, 2015.

IFC: Q1 Financials:(Q1 Un-audited): Consolidated EPS was Tk. 0.58 for January-March, 2016 as against Tk. 0.70 for January-March, 2015. NOCFPS was Tk. 6.70 for January-March, 2016 as against Tk. (4.54) for January-March, 2015. Consolidated NAV per share was Tk. 25.07 as of March 31, 2016 and Tk. 26.39 as of March 31, 2015.

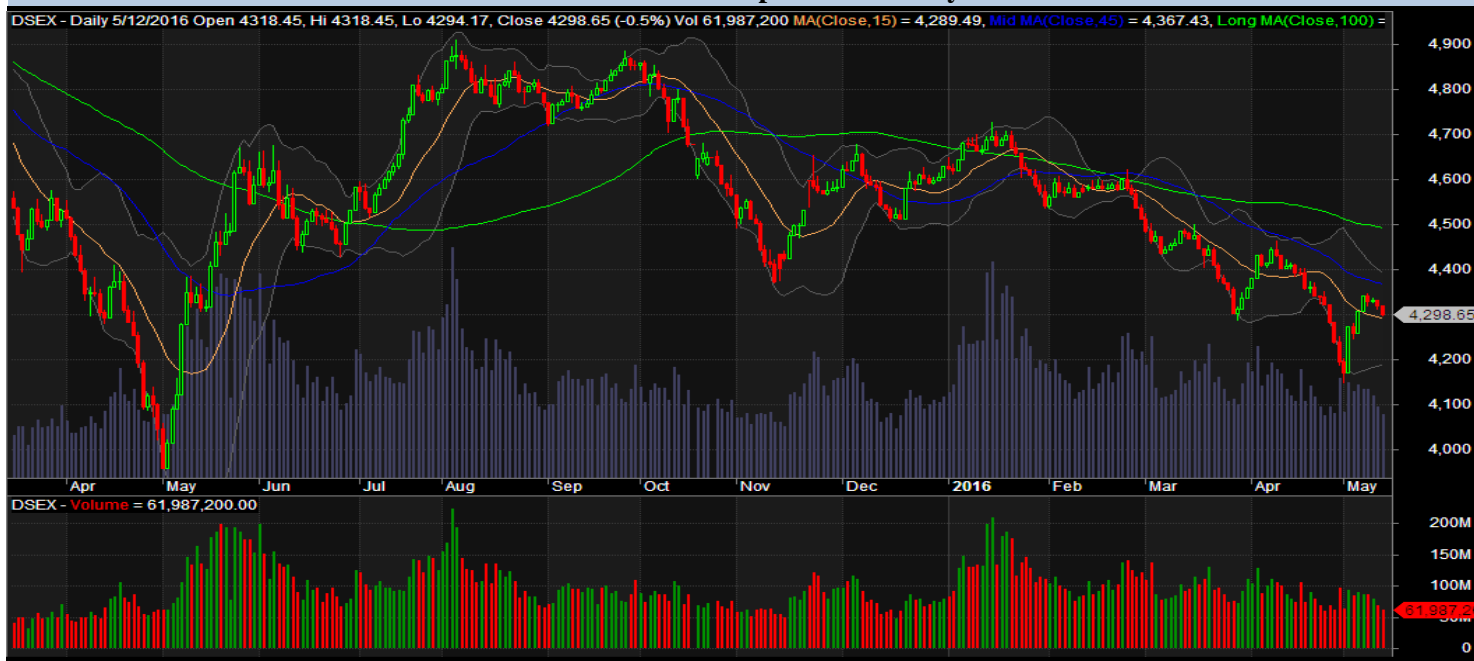
NITOLINS: Q1 Financials: (Q1 Un-audited): EPS was Tk. 0.58 for January-March, 2016 as against Tk. 1.25 for January-March, 2015. NOCFPS was Tk. 0.81 for January-March, 2016 as against Tk. 1.43 for January-March, 2015. NAV per share was Tk. 24.56 as of March 31, 2016 and Tk. 24.30 as of March 31, 2015.

Recent Dividend Declaration

Ticker	Dividend	Record Date
Paramount Insurance Limited	10%B	22.05.2016
Generation Next Fashion Limited	10%B	22.05.2016
Bangladesh General Insurance Company	11%C	24.05.2016
Karnaphuli Insurance Limited	10%C	22.05.2016
Dhaka Insurance Limited	12.50%C	22.05.2016
MJL BD Limited	30%C &10%B	24.05.2016

Note: C= cash Dividend, B= Bonus Dividend, R=Right, N/A=NotApplicable

DSEX Technical Graph for last one year



MTB CAPITAL LIMITED

Corporate head office

Level: 3, MTB Tower, 111, Kazi Nazrul Islam Avenue, Dhaka

Phone: 8321714, Fax: 8321543

www.mtbcap.com

A Mutual Trust Bank Company

you can invest with us

Disclaimer

This report has been prepared by the MTB Capital Limited (MTBCL) on the basis of available information in the market and it is provided for the purposes only. It is not to be used as an offer for buying or selling any instruments. If anyone takes any action relying on this information, shall be responsible solely by him/her self for any consequences. The best care has been taken to make the report informative. MTBCL doesn't give any warrant or guarantee that the report or such information is fully accurate. The information that are provided here is the exclusive property of MTBCL and can not be distributed without prior consent of MTBCL.