

Today's Market Overview

Monday, September 14, 2015

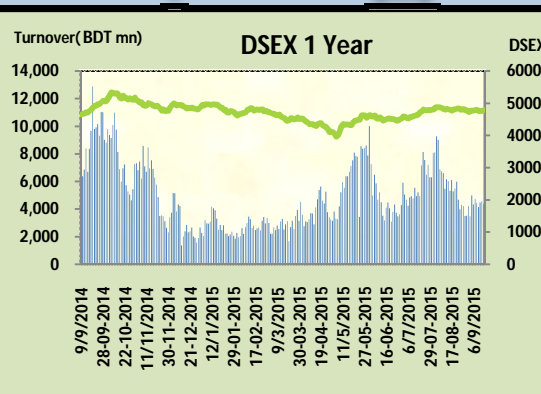


DSEX	4,786.19	0.38%	Issues Traded	Advanced	Declined	Unchanged
Turnover (BDT mn)	4,370.15	-4.49%		145	138	39

Market continued to gain for the three consecutive days and observed a shaky gain today with a sluggish turnover. Lucrative price ranges in some big cap stocks attracted the investors but participation level remained poor as some of the investors remained in sideline. Market opened with optimism and observed buoyancy in early session but it couldn't keep the pace throughout the day though it closed with positive mark. Most of the major sectors put a marginal gain while Engineering & textile performed poor. Other two indices DS30 & DSES the shariah based index both performed marginally positive. Service was the best gainer followed by Cement & Insurances.

The general gauge DSEX ended at 4786.19 with an advance of +0.4% which added 17.89 points to the broad DSEX. The Turnover declined slightly by -4.5% which was 205 Million BDT poorer than that of previous day and finally finished the mark at 4370.15 million BDT. A total of 145 issues advanced with 138 declined and 39 remained unchanged. Sectors that improved were: Bank (+0.5%) Cement (+1.4%) ceramics (+0.3%) Insurance (+1.2%) NBF1 (+0.9%) Telecom (+0.3%) Power (+0.2%) Service (+1.8%) Miscellaneous (+1.1%) Food (+0.9%) tannery (+0.9%) & sectors that declined were: Engineering (-0.9%) Travel (-0.1%) Textiles (-0.4%) Paper (-2.5%) Jute (-4.0%)

BXPHERMA topped in the Volume chart with a turnover of 20.49 BDT crore. POWERGRID ranked top gainer chart with a price hike of +9.8% and IMAMBUTTON topped in the loser chart with a decline of -8.8% from its prevailing price. LAFSURCEML led the way in the index mover chart while HEIDELBERG played the shatter part.



Index Scenario

	INDEX	Change	% Changes
DSEX	4786.19	17.89	0.4%
DSES	1175.47	6.30	0.5%
DS30	1824.93	6.32	0.3%

Market Highlights

DSEX 52 week H/L	5334/3960	Market P/E (LTM)	15.88
DSEX Week H/L	4786/4758	M.Cap (mn)	3348731.4
Group Performances			
Category	Mkt Cap (mn.)	Δ % M.Cap	Turnover BDT (mn)
Group A	2,619,275.91	0.4%	3,801.75
Group B	14,630.27	-1.3%	193.03
Group N	29,428.93	-0.7%	238.93
Group Z	25,371.57	-0.5%	47.51

Turnover Scenario

Today's Turnover (mn.)	Change In BDT (mn.)	% Change
4370.15	(205)	-4.5%

Top Ten Volume (in BDT. crore)

Stock	TT	YT	AT	% Δ in Turnover	TT/AT	CP	YP	% Δ P	Number of shares	Public Holding
BXPHERMA	20.49	4.59	6.03	346.8%	239.8%	69.3	67.8	2.2%	386,244,234.6	50%
LAFSURCEML	15.69	14.99	12.83	4.7%	22.3%	108.4	105.1	3.1%	1,161,373,500.0	30%
AMANFEED	12.74	19.14	26.28	-33.4%	-51.5%	63.3	66.3	-4.5%	80,000,000.0	23%
SQURPHARMA	12.21	7.24	17.89	68.8%	-31.7%	250	249.3	0.3%	623,586,546.0	9%
UNITEDAIR	12.16	7.38	6.79	64.7%	79.1%	10.6	10.3	2.9%	624,808,800.0	74%
ISLAMIBANK	11.45	5.85	9.58	95.6%	19.5%	27.5	26.1	5.4%	1,609,990,668.0	21%
BDTHAI	10.68	3.04	2.12	251.1%	402.8%	37.4	36.2	3.3%	52,335,028.9	71%
ACI	10.57	12.51	5.44	-15.5%	94.2%	564.3	576.8	-2.2%	39,553,240.3	27%
DESCO	9.39	2.74	3.24	242.1%	189.9%	70.5	70.5	0.0%	378,637,909.1	9%
SAIFPOWER	9.38	3.82	4.30	145.2%	118.1%	83.6	79.4	5.3%	70,985,380.0	19%

TT= Today's Turnover in crore, YT= Yesterday's Turnover in Crore, AT= Average of Last 20 day's Turnover, CP= Current Price, YP= Yesterday's Price, % Δ P= percentage change in price

Top Ten Gainer						Top Ten Loser					
Stock	CP	YP	AP	% Δ P	% Δ in P from AP	Stock	CP	YP	AP	% Δ P	% Δ in P from AP
POWERGRID	42.7	38.9	39.51	9.8%	8.1%	IMAMBUTTON	13.40	14.70	11.46	-8.8%	16.9%
EXIMISTMF	4.8	4.5	5.645	6.7%	-15.0%	USMANIAGL	115.90	123.80	113.12	-6.4%	2.5%
POPULARLIF	92.2	86.5	81.83	6.6%	12.7%	RAHIMAFOOI	49.00	52.10	44.83	-6.0%	9.3%
7THICB	107.4	101	103.15	6.3%	4.1%	MONNOSTAF	290.30	308.40	280.96	-5.9%	3.3%
FINEFOODS	11.2	10.6	9.95	5.7%	12.6%	MONNOCERA	46.30	49.10	45.13	-5.7%	2.6%
PURABIGEN	15	14.2	14.43	5.6%	4.0%	AL-HAJTEX	127.00	134.40	127.92	-5.5%	-0.7%
ISLAMIBANK	27.5	26.1	28.735	5.4%	-4.3%	MEGCONMIL	8.80	9.30	8.35	-5.4%	5.5%
SAIFPOWER	83.6	79.4	81.585	5.3%	2.5%	STANCERAM	48.70	51.40	49.42	-5.3%	-1.4%
RELIANCINS	48.8	46.4	48.235	5.2%	1.2%	BEACHHATCH	21.00	22.10	20.96	-5.0%	0.2%
IFILISLMF1	7	6.7	6.96	4.5%	0.6%	ANWARGALV	63.40	66.70	57.70	-4.9%	9.9%

AP= Average Price of last 20 day,% Δ in P from AP= percentage change in price from the 20-day average price

Industry /Sectors overview (Amounts in BDT. Crore)

Sector	Trade Volume		MKT Turnover %		% Δ in Turnover	Market Capitalization		% of Total MC		% Δ in MC
	Today	Yesterday	Today	Yesterday		Today	Yesterday	Today	Yesterday	
Bank	28.45	25.71	0.07	0.06	10.6%	39404.49	39196.04	14.68%	14.66%	0.5%
Cement	23.85	29.21	0.06	0.07	-18.3%	18998.76	18741.04	7.08%	7.01%	1.4%
Ceramics	5.13	6.82	0.01	0.02	-24.7%	2792.52	2784.05	1.04%	1.04%	0.3%
Engineering	72.65	80.43	0.17	0.18	-9.7%	14881.06	15023.17	5.55%	5.62%	-0.9%
Food & Allied Product	20.68	20.66	0.05	0.05	0.1%	24297.74	24092.03	9.05%	9.01%	0.9%
Insurance	16.40	16.53	0.04	0.04	-0.8%	7421.74	7333.97	2.77%	2.74%	1.2%
IT	3.14	4.07	0.01	0.01	-22.9%	554.22	553.28	0.21%	0.21%	0.2%
Jute	0.64	1.07	0.00	0.00	-40.1%	103.04	107.32	0.04%	0.04%	-4.0%
Miscellaneous	28.46	38.55	0.07	0.09	-26.2%	8949.19	8854.64	3.33%	3.31%	1.1%
Mutual Fund	7.25	8.22	0.02	0.02	-11.8%	3141.10	3139.01	1.17%	1.17%	0.1%
NBFI	13.74	15.48	0.03	0.03	-11.2%	8259.82	8185.69	3.08%	3.06%	0.9%
Paper & Printing	1.78	1.91	0.00	0.00	-6.9%	224.86	230.66	0.08%	0.09%	-2.5%
Pharmaceuticals & Chemicals	80.03	71.28	0.19	0.16	12.3%	41822.01	41799.16	15.58%	15.64%	0.1%
Power & Energy	42.51	42.15	0.10	0.09	0.9%	38632.19	38544.38	14.40%	14.42%	0.2%
Service & Real Estate	14.60	9.06	0.03	0.02	61.1%	2026.21	1989.74	0.76%	0.74%	1.8%
Tannery	7.10	7.21	0.02	0.02	-1.6%	2648.71	2626.23	0.99%	0.98%	0.9%
Telecommunication	7.15	7.76	0.02	0.02	-7.9%	43206.69	43079.17	16.10%	16.12%	0.3%
Textile	36.83	52.94	0.09	0.12	-30.4%	8689.10	8725.08	3.24%	3.26%	-0.4%
Travel & Leisure	13.69	8.26	0.03	0.02	65.8%	2314.15	2316.46	0.86%	0.87%	-0.1%

MC= Market Capitalization, % Δ in Turnover= change in turnover from last day, % Δ in MC= change in Market cap from last day

Index Movers	Index Shakers	Sector wise P/E			
LAFSURCEML	HEIDELBCEM	Bank	8.64	NBFI	33.58
ISLAMIBANK	NBL	Cement	39.16	Paper & Printing	73.24
POWERGRID	BSRMLTD	Ceramics	40.48	Pharmaceuticals & Chemicals	27.12
BATBC	LINDEBD	Engineering	38.35	Power & Energy	16.70
GP	BSRMSTEEL	Food & Allied Product	34.58	Service & Real Estate	43.37
BERGERPBL	SPCL	Insurance	15.48	Tannery	35.90
MARICO	ACI	IT	17.78	Telecommunication	26.54
BXPHARMA	RENATA	Jute	170.60	Textile	17.86
SQURPHARMA	PREMIERCEM	Miscellaneous	35.21	Travel & Leisure	14.88
OLYMPIC	GLAXOSMITH				

Important News

Company News:

SAIFPOWER: Agreements Signing with Chittagong Port Authority (CPA): The Company has informed that they have signed agreements with Chittagong Port Authority (CPA) for the Repair and Maintenance of 04 Kalmar Brand Rubber Tyred Gantry (RTG) Cranes for 06 years for the contract price of Tk. 17,28,00,000.00 only and also for Supply of 01 Hydraulic Excavator for the contract price of Tk. 1,28,70,700.00 only for Chittagong Port Authority.

POWERGRID: Enhanced electricity transmission tariff of the Company: The Company has informed that Bangladesh Energy Regulatory Commission has enhanced electricity transmission tariff (wheeling charge) of Power Grid Company of Bangladesh Ltd. with effect from 1st September 2015. The tariffs fixed are as under: For Transmission of electricity end 230 KV, new rate is Tk. 0.2744; for 132 KV, the new rate is Tk. 0.2768 which was Tk. 0.2268 previously and for 33 KV, the new rate is Tk. 0.2791 which was Tk. 0.2291 previously.

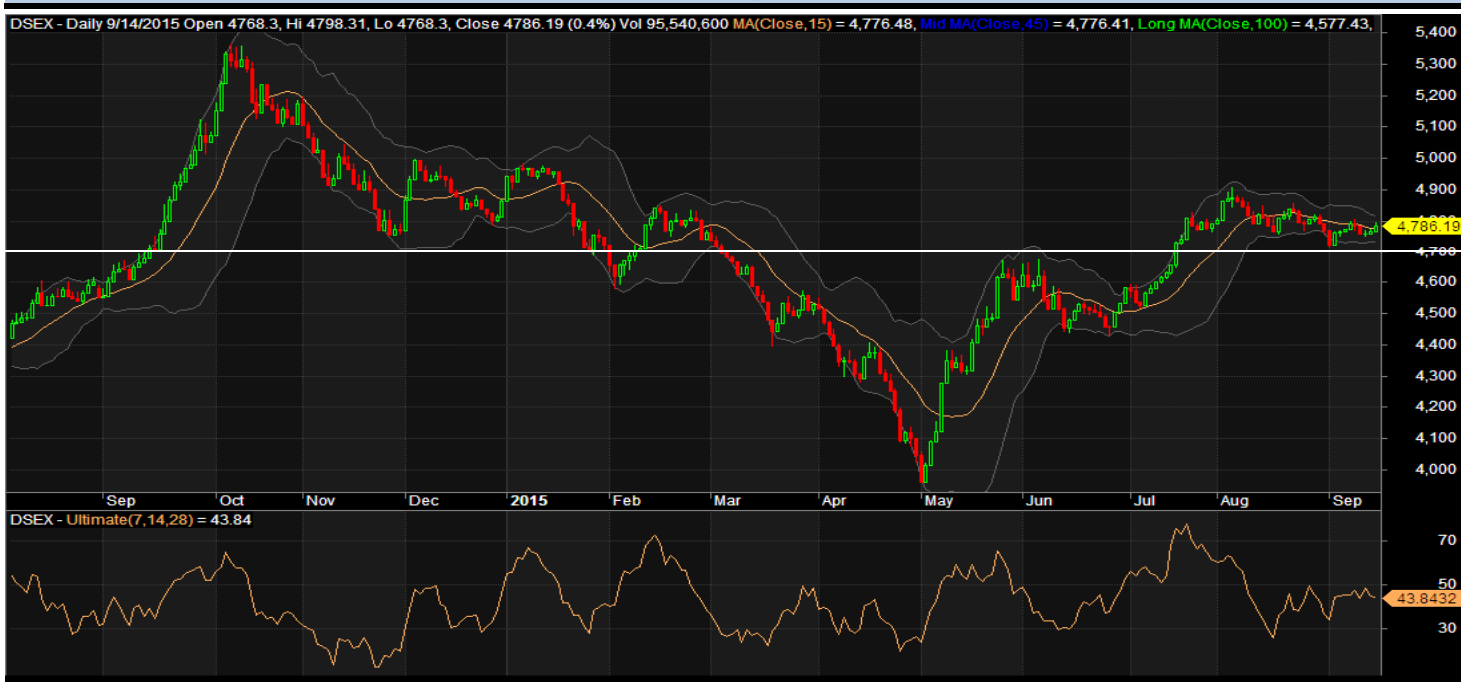
GPHISPAT: Q1 Financials(Q1 Un-audited): EPS for May-July, 2015 was Tk. 0.79 as against Tk. 0.70 for May-July, 2014; NOCFPS was Tk. (4.01) for May-July, 2015 as against Tk. 2.20 for May-July, 2014. NAV per share was Tk. 17.18 as of July 31, 2015 and Tk. 16.40 as of April 30, 201

Recent Dividend Declaration

Ticker	Dividend	Record Date
Bangladesh Building Systems	20%B	20.09.15
Saiham Cotton Mills Limited	5% C & 10% B	17.09.15

Note: C= cash Dividend, B= Bonus Dividend, R=Right, N/A=NotApplicable

DSEX Technical Graph for last one year



MTB CAPITAL LIMITED

Corporate head office

Level: 3, MTB Tower, 111, Kazi Nazrul Islam Avenue, Dhaka

Phone: 8321714, Fax: 8321543

www.mtbcap.com

A mutual Trust Bank Company

you can invest with US

Disclaimer

This report has been prepared by the MTB Capital Limited (MTBCL) on the basis of available information in the market and it is provided for the purposes only. It is not to be used as an offer for buying or selling any instruments. If anyone takes any action relying on this information, shall be responsible solely by him/her self for any consequences. The best care has been taken to make the report informative. MTBCL doesn't give any warrant or guarantee that the report or such information is fully accurate. The information that are provided here is the exclusive property of MTBCL and can not be distributed without prior consent of MTBCL.