

Today's Market Overview

Thursday, January 21, 2016

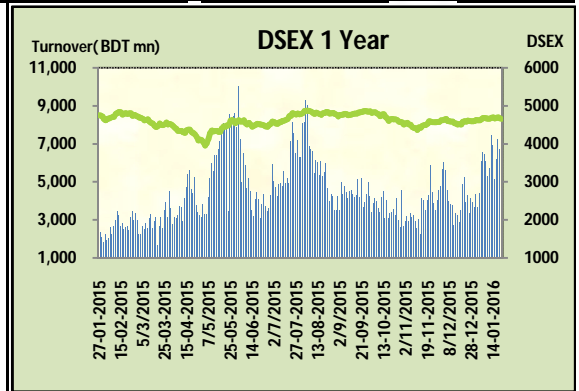


DSEX	4,657.94	-0.25%	Issues Traded	Advanced	Declined	Unchanged
Turnover (BDT mn)	4,186.76	-37.51%		100	184	42

Market continued the losing streak for the consecutive two days with very sluggish turnover as investors were very cautious throughout the session. The premier bourse of the nation opened with a negative mood and continued the same mood till the closure. Before midsession market tried to recover the market but couldn't sustain after midsession as slothful turnover created suspicious atmosphere. Sellers dominated the market vigorously. Moreover indolence in big cap stocks upset investors' confidence. Small cap stocks tried to attract investors while investors from prominent sectors were uncomfortable with their holdings. Turnover hit below 4.5 billion after twelve working days which was lowest of this year. Most of the major & prominent sectors were loser except Bank. Other two indices DS30 & DSES the shariah based index both performed poor. Drastically fall in overall turnover actually mystified the investors which led some panic in late hour.

The general gauge DSEX ended at 4657.94 with a decline of -0.2% which cut 11.57 points from the broad DSEX. The Turnover declined heavily by -37.5% which was 2513 Million BDT Poorer than that of previous day and finally finished the mark at 4187.76 million BDT. A total of 100 issues advanced with 184 declined and 42 remained unchanged. Sectors that improved were: Bank (+0.3%) Food (+0.2%) IT (+2.0%) Jute (+1.4%) Miscellaneous (+0.6%) Paper (+0.2%) & Sectors that declined were: Cement (-0.6%) Engineering (-0.6%) Insurance (-0.6%) NBFI (-0.1%) Power (-0.7%) Telecom (-0.9%) Pharmaceuticals (-0.4%) Service (-2.0%) Textile (-0.9%).

UPGDCL topped in the Volume chart with a turnover of 13.50 BDT crore. SHURWID ranked top gainer chart with a price hike of +9.7% and SAVAREFR topped in the loser chart with a decline of -9.00% from its prevailing price. BRACBANK led the way in the index mover chart while GP played the shatter part.



Index Scenario				Market Highlights				
INDEX	Change	% Changes		DSEX 52 week H/L	4992/3960	Market P/E (LTM)	15.00	
DSEX	4657.94	(11.57)	-0.2%	DSEX Week H/L	4698/4657	M.Cap (mn)	3193687.6	
DSES	1117.39	(5.08)	-0.5%	Group Performances				
DS30	1751.03	(4.84)	-0.3%	Category	Mkt Cap (mn.)	Δ % M.Cap	Turnover BDT (mn)	Δ % Turnover
Turnover Scenario				Group A	2,470,535.16	-0.4%	3,408.14	-38.3%
Today's Turnover (mn.)	Change In BDT (mn.)	% Change		Group B	15,226.35	0.1%	228.31	-30.5%
4186.76	(2,513)	-37.5%		Group N	40,736.81	0.8%	372.84	-33.4%
				Group Z	28,847.88	0.6%	41.07	3.1%

Top Ten Volume (in BDT. crore)										
Stock	TT	YT	AT	% Δ in Turnover	TT/AT	CP	YP	% Δ P	Number of shares	Public Holding
UPGDCL	13.50	41.53	19.61	-67.5%	-31.2%	160.2	161.9	-1.1%	362,944,698.6	5%
ITC	12.88	15.61	14.82	-17.5%	-13.1%	72.1	70.3	2.6%	87,000,000.0	12%
ALLTEX	12.74	16.08	6.15	-20.8%	107.2%	28.3	29.1	-2.7%	55,968,000.0	51%
BXPHERMA	10.85	21.42	14.90	-49.4%	-27.2%	86.1	87.2	-1.3%	386,244,234.6	50%
EMERALDOIL	10.10	18.46	16.42	-45.3%	-38.5%	65.1	61	6.7%	54,285,000.0	38%
SQURPHARMA	9.88	15.98	8.84	-38.2%	11.8%	256.9	257.2	-0.1%	623,586,546.0	9%
UNITEDAIR	9.50	6.84	4.70	38.7%	101.8%	7.9	7.7	2.6%	687,289,680.0	74%
DACCADYE	9.37	10.87	3.57	-13.8%	162.4%	18.5	18.1	2.2%	87,153,454.1	46%
BDTHAI	9.13	13.57	9.65	-32.7%	-5.4%	43.1	43.1	0.0%	52,335,028.9	71%
CITYBANK	8.52	8.80	6.69	-3.2%	27.4%	22.6	22	2.7%	875,798,031.2	59%

TT= Today's Turnover in crore, YT= Yesterday's Turnover in Crore, AT= Average of Last 20 day's Turnover, CP= Current Price, YP= Yesterday's Price, % Δ P= percentage change in price

Top Ten Gainer						Top Ten Loser					
Stock	CP	YP	AP	% Δ P	% Δ in P from AP	Stock	CP	YP	AP	% Δ P	% Δ in P from AP
SHURWID	20.3	18.5	18.105	9.7%	12.1%	SAVAREFR	41.60	45.70	46.03	-9.0%	-9.6%
KAY&QUE	17.6	16.1	16.82	9.3%	4.6%	5THICB	240.00	260.00	228.54	-7.7%	5.0%
EASTRN LUB	463.7	426.4	327.29	8.7%	41.7%	PEOPLESINS	16.30	17.40	15.95	-6.3%	2.2%
SAMORITA	81	75.4	77.29	7.4%	4.8%	ECABLES	120.70	127.00	127.82	-5.0%	-5.6%
EMERALDOIL	65.1	61	69.345	6.7%	-6.1%	TALLUSPIN	23.80	25.00	19.77	-4.8%	20.4%
UNITEDINS	32	30.2	26.935	6.0%	18.8%	SAMATALETE	26.20	27.50	26.65	-4.7%	-1.7%
PRAGATIINS	31.1	29.6	27.6	5.1%	12.7%	MERCINS	13.60	14.20	13.04	-4.2%	4.3%
MIRACLEIND	35.8	34.4	31.535	4.1%	13.5%	DULAMIACO1	7.20	7.50	7.19	-4.0%	0.1%
BDCOM	26.1	25.1	24.26	4.0%	7.6%	TAKAFULINS	17.80	18.50	17.21	-3.8%	3.5%
BDCOM	26.1	25.1	24.26	4.0%	7.6%	SAPORTL	51.20	53.20	58.87	-3.8%	-13.0%

AP= Average Price of last 20 day,% Δ in P from AP= percentage change in price from the 20-day average price

Industry /Sectors overview (Amounts in BDT. Crore)											
Sector	Trade Volume		MKT Turnover %		% Δ in Turnover	Market Capitalization		% of Total MC		% Δ in MC	
	Today	Yesterday	Today	Yesterday		Today	Yesterday	Today	Yesterday		
Bank	23.71	36.61	0.06	0.06	-35.2%	40567.66	40444.50	15.90%	15.79%	0.3%	
Cement	7.00	12.56	0.02	0.02	-44.3%	14493.04	14582.78	5.68%	5.69%	-0.6%	
Ceramics	6.05	11.88	0.02	0.02	-49.1%	2816.13	2827.24	1.10%	1.10%	-0.4%	
Engineering	64.14	88.24	0.16	0.14	-27.3%	15740.72	15830.40	6.17%	6.18%	-0.6%	
Food & Allied Product	19.43	32.62	0.05	0.05	-40.4%	23654.36	23610.70	9.27%	9.22%	0.2%	
Insurance	9.68	15.25	0.02	0.02	-36.5%	7539.70	7584.11	2.95%	2.96%	-0.6%	
IT	17.75	21.50	0.04	0.03	-17.4%	1204.17	1180.09	0.47%	0.46%	2.0%	
Jute	0.74	0.48	0.00	0.00	53.4%	83.73	82.60	0.03%	0.03%	1.4%	
Miscellaneous	16.97	30.22	0.04	0.05	-43.8%	8372.04	8323.46	3.28%	3.25%	0.6%	
Mutual Fund	6.26	6.63	0.02	0.01	-5.6%	3739.67	3751.66	1.47%	1.46%	-0.3%	
NBFI	18.89	24.51	0.05	0.04	-22.9%	9013.87	9024.88	3.53%	3.52%	-0.1%	
Paper & Printing	2.07	3.15	0.01	0.00	-34.3%	216.36	215.88	0.08%	0.08%	0.2%	
Pharmaceuticals & Chemicals	46.56	84.28	0.12	0.13	-44.8%	40934.75	41106.95	16.04%	16.05%	-0.4%	
Power & Energy	42.82	83.51	0.11	0.13	-48.7%	33955.60	34180.60	13.31%	13.35%	-0.7%	
Service & Real Estate	16.19	14.51	0.04	0.02	11.6%	1948.55	1988.13	0.76%	0.78%	-2.0%	
Tannery	1.48	2.75	0.00	0.00	-46.1%	2403.11	2410.72	0.94%	0.94%	-0.3%	
Telecommunication	9.11	10.78	0.02	0.02	-15.5%	37694.01	38038.81	14.77%	14.85%	-0.9%	
Textile	80.53	146.90	0.20	0.23	-45.2%	8607.56	8682.21	3.37%	3.39%	-0.9%	
Travel & Leisure	11.65	10.07	0.03	0.02	15.7%	2223.81	2233.05	0.87%	0.87%	-0.4%	

MC= Market Capitalization, % Δ in Turnover= change in turnover from last day, % Δ in MC= change in Market cap from last day

Index Movers	Index Shakers	Sector wise P/E (Fd.)			
BRACBANK	GP	Bank	9.35	NBFI	45.25
BERGERPBL	MARICO	Cement	31.69	Paper & Printing	95.42
CITYBANK	UPGDCL	Ceramics	45.97	Pharmaceuticals & Chemicals	27.85
DBH	HEIDELBCEM	Engineering	64.97	Power & Energy	15.78
SOUTHEASTB	BXPHERMA	Food & Allied Product	30.21	Service & Real Estate	37.54
EMERALDOIL	DUTCHBANGL	Insurance	16.13	Tannery	53.08
UCB	SAPORTL	IT	24.04	Telecommunication	27.52
BSCCL	BANKASIA	Jute	57.75	Textile	19.98
BATBC	RENATA	Miscellaneous	36.77	Travel & Leisure	19.21
ACI	KPCL				

Important News

Company News:

MATINSPINN: Q2 Financials:(Q2 Un-audited): EPS was Tk. 1.05 for Oct.-December, 2015 as against Tk. 0.91 for Oct.-December, 2014; EPS was Tk. 2.11 for July-December, 2015 as against Tk. 2.01 for July-December, 2014. NOCFPS was Tk. 1.28 for July-December, 2015 as against Tk. 0.98 for July-December, 2014. NAV per share (with Revaluation reserves) was Tk. 40.82 as of Dec. 31, 2015 and Tk. 41.43 as of June 30, 2015 and NAV per share (without Revaluation reserves) was Tk. 30.59 as of Dec. 31, 2015 and Tk. 31.20 as of June 30, 2015.

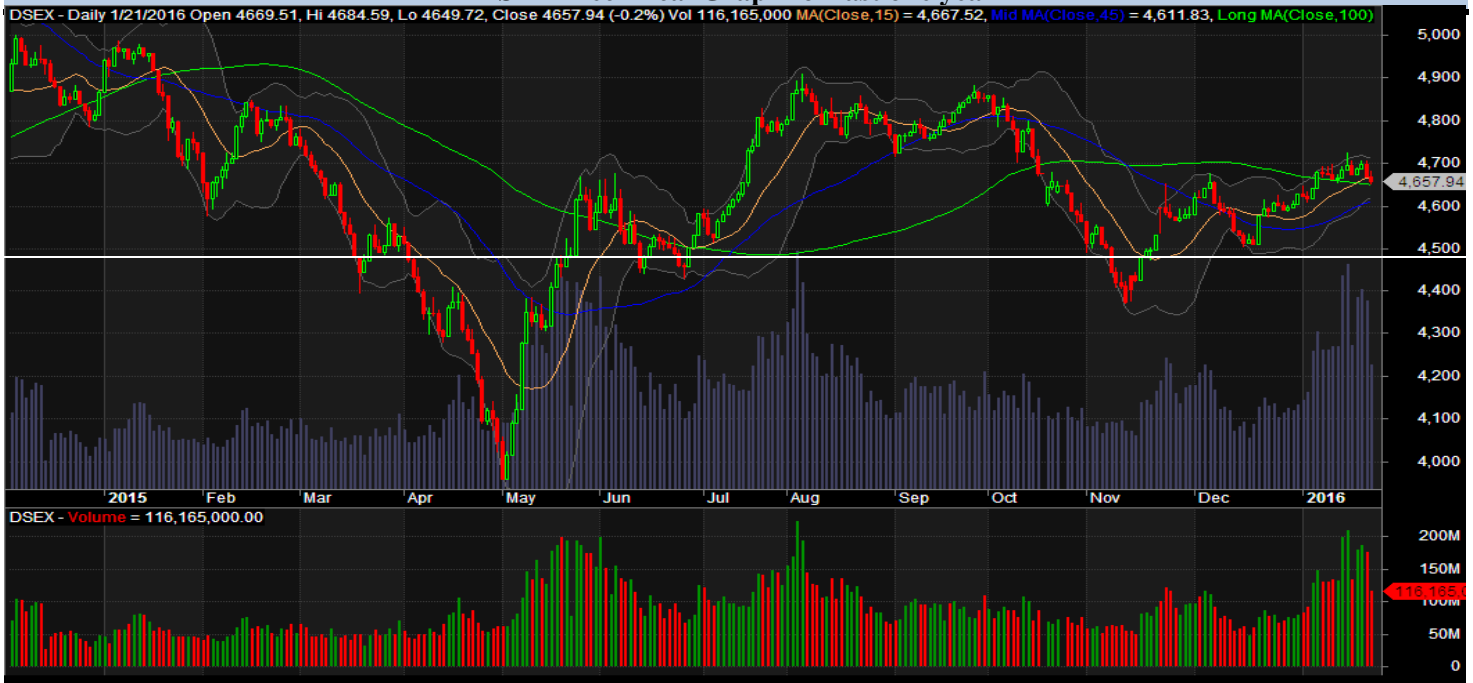
NLTUBES: Q2 Financials: (Q2 Un-audited): EPS was Tk. 0.05 for October-December, 2015 as against Tk. (1.12) for October-December, 2014; EPS was Tk. (0.54) for July-December, 2015 as against Tk. (0.68) for July-December, 2014. NOCFPS was Tk. 6.11 for July-December, 2015 as against Tk. 2.53 for July-December, 2014. NAV per share was Tk. 239.08 as of December 31, 2015 and Tk. 284.70 as of December 31, 2014.

Recent Dividend Declaration

Ticker	Dividend	Record Date
S. Alam Cold Rolled Steels Ltd.	15% C	28.01.16
HRTEX	10% C	10.02.2016

Note: C= cash Dividend, B= Bonus Dividend, R=Right, N/A=NotApplicable

DSEX Technical Graph for last one year



MTB CAPITAL LIMITED

Corporate head office

Level: 3, MTB Tower, 111, Kazi Nazrul Islam Avenue, Dhaka

Phone: 8321714, Fax: 8321543

www.mtbcap.com

A Mutual Trust Bank Company

you can invest with us

Disclaimer

This report has been prepared by the MTB Capital Limited (MTBCL) on the basis of available information in the market and it is provided for the purposes only. It is not to be used as an offer for buying or selling any instruments. If anyone takes any action relying on this information, shall be responsible solely by him/her self for any consequences. The best care has been taken to make the report informative. MTBCL doesn't give any warrant or guarantee that the report or such information is fully accurate. The information that are provided here is the exclusive property of MTBCL and can not be distributed without prior consent of MTBCL.