

Today's Market Overview



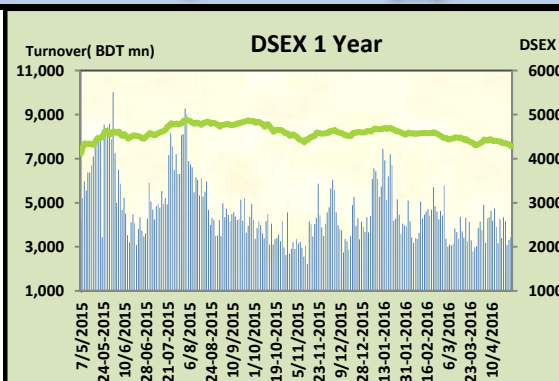
Tuesday, April 26, 2016

DSEX	4,281.93	-0.92%	Issues Traded	↑ Advanced 78	↓ Declined 191	↔ Unchanged 48
Turnover (BDT mn)	3,436.52	3.73%				

Market continued the losing streak for the consecutive four trading days with a slightly improved turnover. The premier bourse of the nation opened with a negative mood and continued the same mood till the closure. Sellers dominated throughout the session moreover they became very aggressive in the later part of the trading session. It seemed that investors were suffering from ill confidence and fear of further fall moreover pending Bank exposure related issue became a cause of anxiety. Most of the major sectors were in severity specially Bank & Engineering performed very poor. Market failed to keep the momentum above the 4300 mark which also an indicator of fear among the investors' mind. Other Two indices DS30 & DSES the shariah based index both performed poor. Engineering was the worst loser followed by Bank & cement while Food & Telecom succeed to put green mark.

The general gauge DSEX ended at 4281.93 with a decline of -0.92% which cut 39.70 points from the broad DSEX. The Turnover advanced slightly by +3.7% which was 124 Million BDT healthier than that of previous day and finally finished the mark at 3436.52 million BDT. A total of 78 issues advanced with 191 declined and 48 remained unchanged. Sectors that improved were: Ceramics (+0.5%) Food (+0.8%) Jute (+4.2%) Tannery (+0.2%) Telecom (+0.1%) & Sectors that declined were: Bank (-1.9%) Cement (-1.4%) Engineering (-3.1%) Power (-0.9%) Pharmaceuticals (-1.1%) NBFII (-0.8%) Insurance (-0.9%) Service (-2.8%) Textiles (-1.2%)

BSRMLTD topped in the Volume chart with a turnover of 40.61 BDT crore. FINEFOODS ranked top in gainer chart with a price hike of +9.6 % and EBL topped in the loser chart with a decline of -19.5% from its prevailing price. BATBC led the way in the index mover chart while EBL played the shatter part.



Index Scenario				Market Highlights				
	INDEX	Change	% Changes	DSEX 52 week H/L	4992/3960	Market P/E (LTM)	13.56	
	DSEX	(39.70)	-0.92%	DSEX Week H/L	4359/4281	M.Cap	3051677.3	
	DSES	(8.87)	-0.84%	Group Performances				
	DS30	(11.53)	-0.70%	Category	Mkt Cap (mn.)	Δ % M.Cap	Turnover BDT (mn)	Δ % Turnover
	Turnover Scenario			Group A	2,326,067.79	-0.9%	2,870.04	9.7%
Today's Turnover (mn.)	Change In BDT (mn.)	% Change		Group B	10,788.03	-1.9%	65.93	21.1%
3436.52	124	3.7%		Group N	41,277.09	-3.2%	305.40	-8.5%
				Group Z	38,219.60	-1.6%	97.07	79.7%

Top Ten Volume (in BDT. crore)										
Stock	TT	YT	AT	% Δ in Turnover	TT/AT	CP	YP	% Δ P	Number of shares	Public Holding
BSRMLTD	40.61	10.79	12.94	276.2%	213.7%	141.2	151.9	-7.0%	190,686,141.8	9%
UPGDCL	18.94	7.16	7.77	164.7%	143.9%	162.8	161	1.1%	362,944,698.6	5%
MJLBD	14.56	19.78	10.52	-26.4%	38.4%	101.5	106.1	-4.3%	274,244,180.0	9%
DOREENPWR	7.62	8.60	17.31	-11.4%	-56.0%	60.3	62.9	-4.1%	80,000,000.0	23%
KEYACOSMET	7.40	3.01	10.93	146.1%	-32.3%	12.2	12.7	-3.9%	707,702,444.0	66%
SQURPHARMA	7.09	4.82	6.26	47.1%	13.2%	255.1	257.2	-0.8%	623,586,546.0	9%
POWERGRID	7.00	9.50	7.04	-26.3%	-0.5%	60.2	62	-2.9%	460,912,991.0	5%
JAMUNAOIL	6.81	18.12	6.69	-62.4%	1.7%	195	195.9	-0.5%	110,424,600.0	20%
OLYMPIC	6.67	4.53	4.68	47.0%	42.5%	309	305.9	1.0%	190,417,988.2	27%
ACI	6.38	8.76	8.52	-27.2%	-25.1%	568.8	572.1	-0.6%	39,553,240.3	27%

TT= Today's Turnover in crore, YT= Yesterday's Turnover in Crore, AT= Average of Last 20 day's Turnover, CP= Current Price, YP= Yesterday's Price, % Δ P= percentage change in price

 **Top Ten Gainer**

Top Ten Loser 

Stock	CP	YP	AP	% Δ P	% Δ in P from AP	Stock	CP	YP	AP	% Δ P	% Δ in P from AP
FINEFOODS	8	7.3	8.105	9.6%	-1.3%	EBL	26.40	32.80	31.47	-19.5%	-16.1%
MONNOSTAF	453.6	417.1	342.465	8.8%	32.5%	BEACHHATCHI	10.30	11.40	12.97	-9.6%	-20.6%
RENWICKJA	295	271.3	264.53	8.7%	11.5%	ISNLTD	12.30	13.60	13.86	-9.6%	-11.3%
MONNOCERA	39.6	36.5	37.035	8.5%	6.9%	NCCBANK	8.90	9.80	9.82	-9.2%	-9.3%
ZEALBANGLA	7.8	7.2	6.285	8.3%	24.1%	PROGRESLIF	59.10	64.90	63.87	-8.9%	-7.5%
LIBRAINFU	681.4	633.9	536.91	7.5%	26.9%	BDFINANCE	12.60	13.80	14.95	-8.7%	-15.7%
EXIMISTMF	5.8	5.4	5.84	7.4%	-0.7%	SAVAREFR	44.30	48.50	43.59	-8.7%	1.6%
NTC	598.8	557.8	574.775	7.4%	4.2%	NITOLINS	20.90	22.50	23.22	-7.1%	-10.0%
STANCERAM	47.8	44.8	43.385	6.7%	10.2%	BSRMLTD	141.20	151.90	180.39	-7.0%	-21.7%
EASTRNLAB	1309.1	1232.1	997.545	6.2%	31.2%	DULAMIACOI	6.60	7.10	6.92	-7.0%	-4.6%

AP= Average Price of last 20 day,% Δ in P from AP= percentage change in price from the 20-day average price

Industry /Sectors overview (Amounts in BDT. Crore)

Sector	Trade Volume		MKT Turnover %		% Δ in Turnover	Market Capitalization		% of Total MC		% Δ in MC
	Today	Yesterday	Today	Yesterday		Today	Yesterday	Today	Yesterday	
Bank	18.15	11.68	0.06	0.04	55.4%	36009.18	36700.43	14.94%	15.09%	-1.9%
Cement	6.13	6.13	0.02	0.02	-0.1%	12713.48	12891.37	5.27%	5.30%	-1.4%
Ceramics	2.94	3.34	0.01	0.01	-12.0%	2435.92	2422.60	1.01%	1.00%	0.5%
Engineering	71.83	38.89	0.22	0.13	84.7%	14260.17	14712.58	5.92%	6.05%	-3.1%
Food & Allied Product	25.39	15.81	0.08	0.05	60.7%	23694.62	23501.27	9.83%	9.66%	0.8%
Insurance	7.16	8.54	0.02	0.03	-16.1%	6900.51	6961.04	2.86%	2.86%	-0.9%
IT	4.72	6.32	0.01	0.02	-25.3%	927.89	958.11	0.38%	0.39%	-3.2%
Jute	3.27	1.04	0.01	0.00	214.6%	92.70	88.95	0.04%	0.04%	4.2%
Miscellaneous	14.11	16.37	0.04	0.05	-13.8%	8196.74	8251.98	3.40%	3.39%	-0.7%
Mutual Fund	1.45	1.53	0.00	0.01	-5.3%	3563.46	3593.70	1.48%	1.48%	-0.8%
NBFI	13.54	16.42	0.04	0.05	-17.5%	7685.00	7745.93	3.19%	3.18%	-0.8%
Paper & Printing	0.35	0.15	0.00	0.00	138.4%	146.94	154.01	0.06%	0.06%	-4.6%
Pharmaceuticals & Chemicals	45.24	43.52	0.14	0.14	4.0%	40842.20	41291.32	16.95%	16.98%	-1.1%
Power & Energy	80.18	97.18	0.24	0.32	-17.5%	34786.06	35103.30	14.43%	14.43%	-0.9%
Service & Real Estate	4.26	3.04	0.01	0.01	40.1%	1662.94	1710.12	0.69%	0.70%	-2.8%
Tannery	2.35	2.19	0.01	0.01	7.2%	2180.12	2176.67	0.90%	0.89%	0.2%
Telecommunication	5.49	9.76	0.02	0.03	-43.7%	35703.72	35654.34	14.81%	14.66%	0.1%
Textile	20.29	17.28	0.06	0.06	17.4%	7428.89	7520.15	3.08%	3.09%	-1.2%
Travel & Leisure	1.91	2.81	0.01	0.01	-32.0%	1785.96	1807.76	0.74%	0.74%	-1.2%

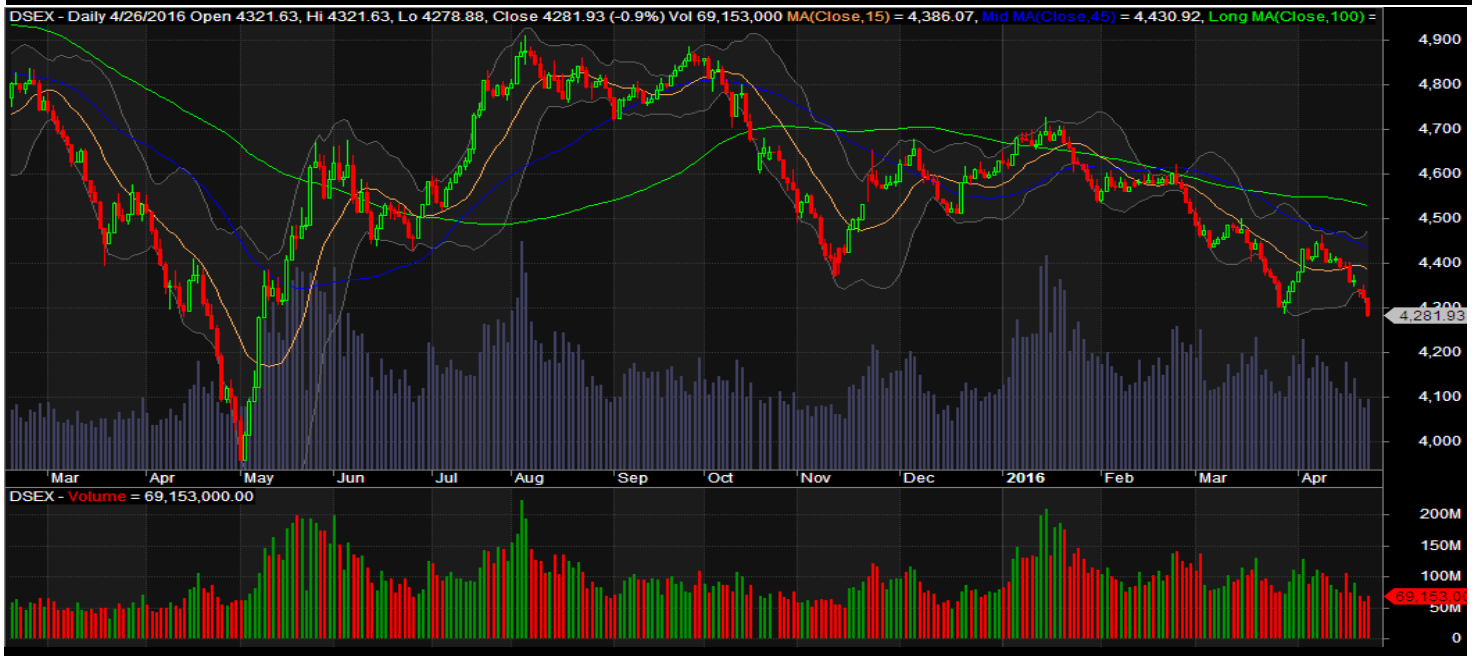
MC= Market Capitalization, % Δ in Turnover= change in turnover from last day, % Δ in MC= change in Market cap from last day

Index Movers	Index Shakers	Sector wise P/E (Fd.)			
BATBC	EBL	Bank	7.70	NBFI	30.60
GP	BSRMLTD	Cement	24.93	Paper & Printing	78.58
UPGDCL	MARICO	Ceramics	34.02	Pharmaceuticals & Chemicals	26.59
OLYMPIC	LAFSURCEML	Engineering	110.69	Power & Energy	17.24
PADMAOIL	SQURPHARMA	Food & Allied Product	30.46	Service & Real Estate	29.03
MPETROLEUM	BSRMSTEEL	Insurance	12.58	Tannery	34.06
NTC	MJLBD	IT	96.35	Telecommunication	22.26
KOHINOOR	POWERGRID	Jute	173.91	Textile	16.98
LINDEBD	NCCBANK	Miscellaneous	33.66	Travel & Leisure	18.18
CITYBANK	DESCO				

Important News**Company News:****Recent Dividend Declaration**

Ticker	Dividend	Record Date
Beximco Pharmaceuticals Limited	10% C & 5% B	12.05.2016
Bangladesh Export Import Co. Ltd..	15% B	12.05.2016
Dragon Sweater and Spinning Limited	15% B	12.05.2016
EXIM Bank of Bangladesh Ltd.	12% C	15.05.2016
Brac Bank Limited	25% C	12.05.2016
Islami Bank Limited	20% C	11.05.2016

Note: C= cash Dividend, B= Bonus Dividend, R=Right, N/A=NotApplicable

DSEX Technical Graph for last one year**MTB CAPITAL LIMITED**

Corporate head office

Level: 3, MTB Tower, 111, Kazi Nazrul Islam Avenue, Dhaka

Phone: 8321714, Fax: 8321543

www.mtbcap.com

A Mutual Trust Bank Company

you can invest with us

Disclaimer

This report has been prepared by the MTB Capital Limited (MTBCL) on the basis of available information in the market and it is provided for the purposes only. It is not to be used as an offer for buying or selling any instruments. If anyone takes any action relying on this information, shall be responsible solely by him/her self for any consequences. The best care has been taken to make the report informative. MTBCL doesn't give any warrant or guarantee that the report or such information is fully accurate. The information that are provided here is the exclusive property of MTBCL and can not be distributed without prior consent of MTBCL.