

Today's Market Overview

Monday, January 18, 2016

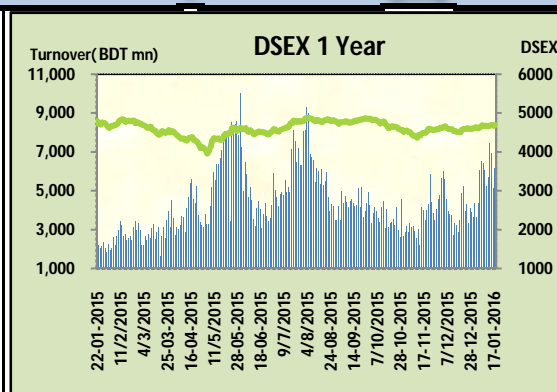


DSEX	4,687.20	0.26%	Issues Traded	Advanced	Declined	Unchanged
Turnover (BDT mn)	6,197.46	20.9%		200	93	31

Market bounce back again in the green zone after yesterday's downfall with very improved turnover. The premier bourse of the nation opened with a positive mood and continued the same mood till the closure but it observed sale pressure during the midsession which tried to mow down the index. Late hour confidence and buoyancy motivated side liner to come in the fence thus push the market in the green zone with 6 billion above turnover. Improvement in turnover help the investors to reduce their tension though Big paid up stocks still remained out of scene. Bank, Power & Pharmaceuticals frustrated their investors. Most of the concentration occurred in Textiles, Service & Engineering. Most of the major sectors put a mixed show while small cap stocks kept the market in vibration. Among the other two indices DS30 showed poor performance while DSES the shariah based index performed positively. IT was the best gainer followed by Jute & Textiles. Power was the worst loser followed by Pharmaceuticals & Bank.

The general gauge DSEX ended at 4687.20 with an advance of +0.3% which added 12.38 points to the broad DSEX. The Turnover advanced heavily +20.9% which was 1071 Million BDT healthier than that of previous day and finally finished the mark at 6197.46 million BDT. A total of 200 issues advanced with 93 declined and 31 remained unchanged. Sectors that improved were: Ceramics (+1.5%) Engineering (+0.4%) IT (+7.9%) Service (+1.0%) Telecom (+0.7%) Mutual Fund (+1.5%) Textiles (+3.0%) Travel (+2.2%) & Sectors that declined were: Bank (-0.2%) Pharmaceuticals (-0.2%) Power (-0.2%)

EMERALDOIL topped in the Volume chart with a turnover of 21.75 BDT crore. CMCKAMAL ranked top gainer chart with a price hike of +10.0 % and VAMLBDMF1 topped in the loser chart with a decline of -6.2% from its prevailing price. GP led the way in the index mover chart while UPGDCL played the shatter part.



Index Scenario				Market Highlights					
	INDEX	Change	% Changes	DSEX 52 week H/L	4992/3960	Market P/E (LTM)	15.03		
	DSEX	4687.20	12.38	0.3%	DSEX Week H/L	4695/4665	M.Cap (mn)	3193162.2	
	DSES	1121.97	3.69	0.3%	Group Performances				
	DS30	1753.55	(0.17)	0.0%	Category	Mkt Cap (mn.)	Δ % M.Cap	Turnover BDT (mn)	Δ % Turnover
	Turnover Scenario			Group A	2,475,333.28	0.2%	5,289.71	23.0%	
	Today's Turnover (mn.)	Change In BDT (mn.)	% Change	Group B	15,387.29	4.3%	351.30	40.5%	
	6197.46	1,071	20.9%	Group N	41,538.98	1.5%	417.23	1.8%	
				Group Z	28,732.36	0.7%	61.27	35.3%	

Top Ten Volume (in BDT. crore)										
Stock	TT	YT	AT	% Δ in Turnover	TT/AT	CP	YP	% Δ P	Number of shares	Public Holding
EMERALDOIL	21.75	36.98	15.01	-41.2%	44.9%	72.6	69.9	3.9%	54,285,000.0	38%
GPHISPAT	18.08	6.62	1.88	173.0%	861.0%	55.7	51.3	8.6%	118,800,000.0	22%
UPGDCL	16.41	16.31	16.27	0.7%	0.9%	156.3	158.6	-1.5%	362,944,698.6	5%
SAIFPOWER	15.60	4.95	6.20	214.9%	151.5%	69.4	67.9	2.2%	91,571,140.2	19%
GOLDENSON	15.27	13.87	4.22	10.1%	261.6%	31.8	31.9	-0.3%	170,966,530.6	38%
ALLTEX	14.21	10.70	3.79	32.9%	274.5%	27.3	26.1	4.6%	55,968,000.0	51%
BDTHAI	13.21	15.42	7.96	-14.3%	66.1%	46.1	45.9	0.4%	52,335,028.9	71%
ITC	13.00	13.45	14.59	-3.3%	-10.9%	77.9	70.9	9.9%	87,000,000.0	12%
CITYBANK	10.77	7.23	5.47	48.9%	96.9%	22.6	23	-1.7%	875,798,031.2	59%
TALLUSPIN	9.29	8.43	1.67	10.1%	454.5%	23.2	23.1	0.4%	89,335,375.8	49%

TT= Today's Turnover in crore, YT= Yesterday's Turnover in Crore, AT= Average of Last 20 day's Turnover, CP= Current Price, YP= Yesterday's Price, % Δ P= percentage change in price

Top Ten Gainer						Top Ten Loser					
Stock	CP	YP	AP	% Δ P	% Δ in P from AP	Stock	CP	YP	AP	% Δ P	% Δ in P from AP
CMCKAMAL	15.4	14	13.2	10.0%	16.7%	VAMLBDMF1	12.20	13.00	NM	-6.2%	NM
HAKKANIPUL	60.7	55.2	52.76	10.0%	15.0%	ACIFORMULA	183.30	189.80	187.10	-3.4%	-2.0%
ITC	77.9	70.9	55.2375	9.9%	41.0%	RANFOUNDRY	110.50	114.40	113.66	-3.4%	-2.8%
ANLIMAYARN	24.5	22.3	22.265	9.9%	10.0%	SAMATALETF	27.00	27.90	26.90	-3.2%	0.4%
HRTEX	24.6	22.4	21.895	9.8%	12.4%	JUTESPINN	57.90	59.70	54.64	-3.0%	6.0%
DELTASPINN	11.4	10.4	9.095	9.6%	25.3%	KDSALTD	80.30	82.60	85.56	-2.8%	-6.1%
MONNOCERA	44.8	41	39.38	9.3%	13.8%	PRIMEINSUR	14.80	15.20	14.78	-2.6%	0.1%
SAIHAMTEX	16.6	15.2	14.535	9.2%	14.2%	NTC	598.90	614.50	599.34	-2.5%	-0.1%
EASTRN LUB	360.6	331.6	310.065	8.7%	16.3%	ICBIBANK	4.20	4.30	4.27	-2.3%	-1.6%
INTECH	13.7	12.6	12.72	8.7%	7.7%	CVOPRL	301.90	309.00	329.09	-2.3%	-8.3%

AP= Average Price of last 20 day,% Δ in P from AP= percentage change in price from the 20-day average price

Industry /Sectors overview (Amounts in BDT. Crore)											
Sector	Trade Volume		MKT Turnover %		% Δ in Turnover	Market Capitalization		% of Total MC		% Δ in MC	
	Today	Yesterday	Today	Yesterday		Today	Yesterday	Today	Yesterday		
Bank	36.84	32.75	0.06	0.07	12.5%	40953.67	41024.54	16.01%	16.08%	-0.2%	
Cement	10.83	8.85	0.02	0.02	22.4%	14467.74	14464.17	5.66%	5.67%	0.0%	
Ceramics	9.55	3.98	0.02	0.01	139.7%	2801.55	2760.79	1.10%	1.08%	1.5%	
Engineering	115.72	103.40	0.19	0.21	11.9%	15982.97	15919.74	6.25%	6.24%	0.4%	
Food & Allied Product	38.15	47.55	0.06	0.10	-19.8%	23634.75	23618.75	9.24%	9.26%	0.1%	
Insurance	10.34	8.72	0.02	0.02	18.6%	7492.58	7461.98	2.93%	2.92%	0.4%	
IT	26.38	19.88	0.04	0.04	32.7%	1267.44	1174.39	0.50%	0.46%	7.9%	
Jute	0.62	0.27	0.00	0.00	131.5%	84.66	81.97	0.03%	0.03%	3.3%	
Miscellaneous	35.71	28.42	0.06	0.06	25.6%	8399.72	8388.64	3.28%	3.29%	0.1%	
Mutual Fund	11.68	8.71	0.02	0.02	34.0%	3828.82	3770.41	1.50%	1.48%	1.5%	
NBFI	27.90	29.50	0.05	0.06	-5.4%	9177.87	9182.45	3.59%	3.60%	0.0%	
Paper & Printing	4.45	1.85	0.01	0.00	140.3%	219.78	207.14	0.09%	0.08%	6.1%	
Pharmaceuticals & Chemicals	57.06	51.11	0.09	0.10	11.6%	41010.41	41110.66	16.04%	16.11%	-0.2%	
Power & Energy	62.93	53.98	0.10	0.11	16.6%	34081.23	34155.89	13.33%	13.39%	-0.2%	
Service & Real Estate	27.25	12.96	0.05	0.03	110.3%	2089.31	2068.49	0.82%	0.81%	1.0%	
Tannery	3.62	2.24	0.01	0.00	61.8%	2406.65	2407.31	0.94%	0.94%	0.0%	
Telecommunication	6.59	7.59	0.01	0.02	-13.2%	36982.89	36739.84	14.46%	14.40%	0.7%	
Textile	102.03	62.98	0.17	0.13	62.0%	8587.19	8340.25	3.36%	3.27%	3.0%	
Travel & Leisure	14.17	8.67	0.02	0.02	63.4%	2283.97	2235.73	0.89%	0.88%	2.2%	

MC= Market Capitalization, % Δ in Turnover= change in turnover from last day, % Δ in MC= change in Market cap from last day

Index Movers	Index Shakers	Sector wise P/E (Fd.)			
GP	UPGDCL	Bank	9.46	NBFI	46.85
ITC	SQRPHARMA	Cement	31.53	Paper & Printing	99.10
GPHISPAT	ACI	Ceramics	47.15	Pharmaceuticals & Chemicals	27.86
BANKASIA	SUMITPOWER	Engineering	67.20	Power & Energy	15.88
LINDEBD	CITYBANK	Food & Allied Product	30.10	Service & Real Estate	41.96
BRACBANK	ACIFORMULA	Insurance	15.95	Tannery	53.15
UNITEDAIR	BSRMSTEEL	IT	24.92	Telecommunication	26.84
GENNEXT	RENATA	Jute	58.69	Textile	20.16
APOLOISPAT	RUPALIBANK	Miscellaneous	36.40	Travel & Leisure	19.55
RAKCERAMIC	ALARABANK				

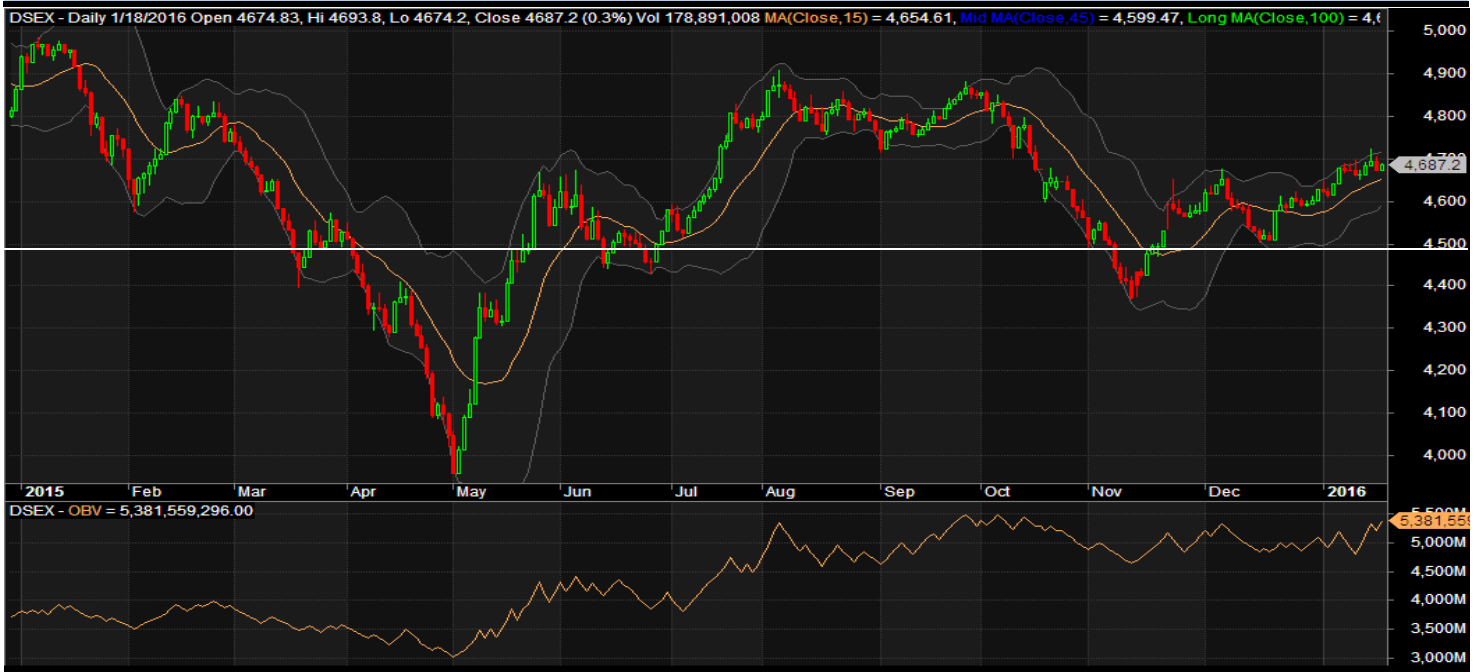
Important News**Company News:**

ECABLES: Q2 Financials: (Q2 Un-audited): EPS for July-December, 2015 was Tk. 0.03 as against Tk. 0.76 for July-December, 2014. EPS for October-December, 2015 was Tk. (0.13) as against Tk. 0.74 for October-December, 2014. NOCFPS was Tk. (4.71) for July-December, 2015 as against Tk. 1.99 for July-December, 2014. NAV per share was Tk. 30.31 as of December 31, 2015 and Tk. 28.67 as of December 31, 2014.

Recent Dividend Declaration

Ticker	Dividend	Record Date
S. Alam Cold Rolled Steels Ltd.	15% C	28.01.16
HRTEX	10% C	10.02.2016

Note: C= cash Dividend, B= Bonus Dividend, R=Right, N/A=NotApplicable

DSEX Technical Graph for last one year**MTB CAPITAL LIMITED**

Corporate head office

Level: 3, MTB Tower, 111, Kazi Nazrul Islam Avenue, Dhaka

Phone: 8321714, Fax: 8321543

www.mtbcap.com

A Mutual Trust Bank Company

you can invest with us

Disclaimer

This report has been prepared by the MTB Capital Limited (MTBCL) on the basis of available information in the market and it is provided for the purposes only. It is not to be used as an offer for buying or selling any instruments. If anyone takes any action relying on this information, shall be responsible solely by him/her self for any consequences. The best care has been taken to make the report informative. MTBCL doesn't give any warrant or guarantee that the report or such information is fully accurate. The information that are provided here is the exclusive property of MTBCL and can not be distributed without prior consent of MTBCL.