

# Today's Market Overview

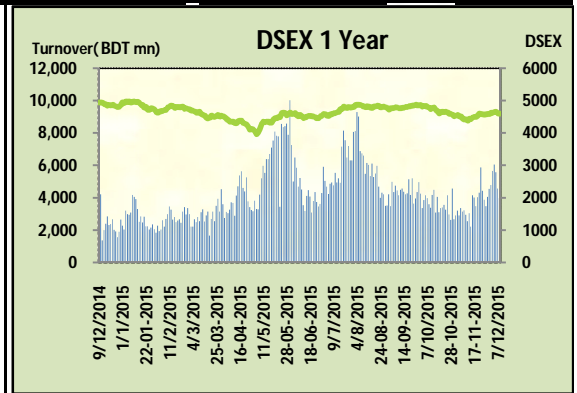
Tuesday, December 08, 2015



<b>DSEX</b>	4,593.49	<b>-0.32%</b>	<b>Issues Traded</b>	<b>Advanced</b>	<b>Declined</b>	<b>Unchanged</b>
<b>Turnover (BDT mn)</b>	3,980.81	<b>-12.80%</b>		119	152	47

Market continued the bear run for the consecutive two days with a very sluggish turnover as investors were in fear about winding up of two Mutual Funds AIMS & GRAMMEN One. Regulators confirmation on delisting issue of two big mutual funds actually created a fear among the investors today as these two funds hold huge stock holdings and assumption of big sale prevented investors to show buoyancy today. The premier bourse of the nation opened with a very negative mood and continued the same mood till the closure. Turnover decreased notably which actually upset the investors and dived below 4 billion mark after seven trading sessions. Most of the major & prominent sectors failed to show confidence. Most of the investors were indecisive mood while early profit taker kept them out of the fence. Investors from Telecom, Power & Engineering were in discomfort with their holdings. Small cap stocks like Insurance & Paper lead the market. Other two indices DS30 & DSES the shariah based index both performed poor.

The general gauge DSEX ended at 4593.49 with a decline of -0.3% which cut 14.56 points from the broad DSEX. The Turnover declined heavily by -12.8% which was 584 Million BDT poorer than that of previous day and finally finished the mark at 3980.81 million BDT. A total of 119 issues advanced with 152 declined and 47 remained unchanged. Sectors that improved were: Cement (+0.2%) Insurance (+2.4%) Miscellaneous (+0.1%) Paper (+1.1%) Mutual Fund (+0.3%) & sectors that declined were: Bank (-0.4%) Ceramics (-0.5%) Engineering (-1.1%) Food (-1.1%) IT (-1.2%) NBFI (-0.7%) Power (-1.4%) Pharmaceuticals (-0.2%) Telecom (-1.3%) Service (-1.3%) Travel (-3.7%) Textiles (-0.1%) BSRMSTEEL topped in the Volume chart with a turnover of 23.76 BDT crore. KEYACOSMETIC ranked top gainer chart with a price hike of +9.2% and UNITEDAIR topped in the loser chart with a decline of -10.3% from its prevailing price. DELTALIFE led the way in the index mover chart while GP played the shatter part.



Index Scenario				Market Highlights				
	<b>INDEX</b>	<b>Change</b>	<b>% Changes</b>	<b>DSEX 52 week H/L</b>	4992/3960	<b>Market P/E (LTM)</b>	14.79	
	<b>DSEX</b>	4593.49	(14.56)	<b>DSEX Week H/L</b>	4655/4593	<b>M.Cap (mn)</b>	3153800.0	
	<b>DSES</b>	1106.58	(3.95)	<b>Group Performances</b>				
	<b>DS30</b>	1749.24	(7.58)	<b>Category</b>	<b>Mkt Cap (mn.)</b>	<b>Δ % M.Cap</b>	<b>Turnover BDT (mn)</b>	<b>Δ % Turnover</b>
	<b>Turnover Scenario</b>			<b>Group A</b>	2,443,540.86	-0.7%	3,282.27	-16.5%
	<b>Today's Turnover (mn.)</b>	<b>Change In BDT (mn.)</b>	<b>% Change</b>	<b>Group B</b>	13,237.22	0.5%	118.53	-7.4%
	3980.81	(584)	-12.8%	<b>Group N</b>	34,096.23	-0.7%	365.04	-17.4%
				<b>Group Z</b>	23,834.17	1.1%	95.76	129.3%

Top Ten Volume (in BDT. crore)										
Stock	TT	YT	AT	% Δ in Turnover	TT/AT	CP	YP	% Δ P	Number of shares	Public Holding
BSRMSTEEL	23.76	18.14	11.16	31.0%	112.9%	98.7	102	-3.2%	341,775,000.0	13%
DELTALIFE	20.15	5.63	5.26	258.2%	282.9%	124	115.8	7.1%	123,750,000.0	63%
QSMRDYCELL	19.78	26.52	10.62	-25.4%	86.3%	97.5	90.8	7.4%	40,479,436.8	54%
SQURPHARMA	18.93	13.59	11.28	39.3%	67.9%	255	256.7	-0.7%	623,586,546.0	9%
BXPBARMA	12.93	9.56	14.35	35.3%	-9.9%	81.2	79.9	1.6%	386,244,234.6	50%
IFADAUTOS	12.83	12.61	18.22	1.7%	-29.6%	97.7	100.1	-2.4%	149,500,000.0	17%
SAIFPOWER	9.22	14.58	14.76	-36.7%	-37.5%	67.5	69.5	-2.9%	91,571,140.2	19%
KDSALTD	9.16	13.32	10.71	-31.3%	-14.5%	87.1	84	3.7%	52,000,000.0	21%
KEYACOSMET	7.51	2.37	1.25	216.9%	499.2%	15.4	14.1	9.2%	214,880,008.8	66%
MICEMENT	7.13	8.47	3.86	-15.8%	84.8%	93	91.2	2.0%	148,500,000.0	30%

TT= Today's Turnover in crore, YT= Yesterday's Turnover in Crore, AT= Average of Last 20 day's Turnover, CP= Current Price, YP= Yesterday's Price, % Δ P= percentage change in price

Top Ten Gainer						Top Ten Loser					
Stock	CP	YP	AP	% Δ P	% Δ in P from AP	Stock	CP	YP	AP	% Δ P	% Δ in P from AP
KEYACOSMET	15.4	14.1	13.86	9.2%	11.1%	UNITEDAIR	7.80	8.70	8.74	-10.3%	-10.8%
QSMRDYCELL	97.5	90.8	97.855	7.4%	-0.4%	BDAUTOCA	36.30	39.10	35.90	-7.2%	1.1%
DELTALIFE	124	115.8	100.51	7.1%	23.4%	SPCL	128.10	136.90	132.88	-6.4%	-3.6%
ISLAMIINS	17.1	16.1	15.12	6.2%	13.1%	MODERNDYE	95.50	101.90	116.99	-6.3%	-18.4%
IBNSINA	135.4	127.8	143.355	5.9%	-5.5%	APEXSPINN	81.20	85.30	74.95	-4.8%	8.3%
TOSRIFA	19.6	18.5	18.12	5.9%	8.2%	GLOBALINS	14.50	15.20	12.54	-4.6%	15.7%
GHCL	39.8	37.7	37.385	5.6%	6.5%	WATACHEM	161.00	167.60	152.06	-3.9%	5.9%
STANCERAM	51.1	48.5	49.88	5.4%	2.4%	SAIHAMTEX	14.00	14.50	15.36	-3.4%	-8.9%
GQBALLPEN	70.2	66.7	61.23	5.2%	14.6%	BSRMSTEEL	98.70	102.00	93.63	-3.2%	5.4%
DSHGARME	168.7	161.1	142.65	4.7%	18.3%	GOLDENSON	27.00	27.90	25.87	-3.2%	4.4%

AP= Average Price of last 20 day,% Δ in P from AP= percentage change in price from the 20-day average price

Industry /Sectors overview (Amounts in BDT. Crore)											
Sector	Trade Volume		MKT Turnover %		% Δ in Turnover	Market Capitalization		% of Total MC		% Δ in MC	
	Today	Yesterday	Today	Yesterday		Today	Yesterday	Today	Yesterday		
Bank	17.34	30.85	0.05	0.07	-43.8%	40010.26	40167.15	15.93%	15.90%	-0.4%	
Cement	19.24	22.51	0.05	0.05	-14.5%	15813.46	15779.82	6.30%	6.24%	0.2%	
Ceramics	4.85	4.54	0.01	0.01	6.9%	2631.26	2644.95	1.05%	1.05%	-0.5%	
Engineering	98.86	133.63	0.26	0.30	-26.0%	15701.57	15871.42	6.25%	6.28%	-1.1%	
Food & Allied Product	9.39	14.21	0.02	0.03	-33.9%	23849.79	24109.49	9.50%	9.54%	-1.1%	
Insurance	30.47	13.91	0.08	0.03	119.0%	7468.48	7293.65	2.97%	2.89%	2.4%	
IT	3.75	3.89	0.01	0.01	-3.5%	512.69	519.00	0.20%	0.21%	-1.2%	
Jute	0.45	0.99	0.00	0.00	-54.5%	87.17	87.83	0.03%	0.03%	-0.7%	
Miscellaneous	18.90	20.95	0.05	0.05	-9.8%	7979.45	7973.82	3.18%	3.16%	0.1%	
Mutual Fund	6.29	5.13	0.02	0.01	22.4%	3569.06	3557.79	1.42%	1.41%	0.3%	
NBFI	10.13	17.44	0.03	0.04	-41.9%	8183.12	8242.29	3.26%	3.26%	-0.7%	
Paper & Printing	1.91	2.66	0.01	0.01	-28.1%	191.69	189.57	0.08%	0.08%	1.1%	
Pharmaceuticals & Chemicals	63.38	60.79	0.17	0.14	4.3%	40842.95	40918.85	16.27%	16.19%	-0.2%	
Power & Energy	41.71	46.48	0.11	0.10	-10.3%	33936.51	34413.66	13.52%	13.62%	-1.4%	
Service & Real Estate	12.98	18.68	0.03	0.04	-30.5%	1992.39	2018.78	0.79%	0.80%	-1.3%	
Tannery	3.83	3.58	0.01	0.01	6.9%	2385.86	2382.46	0.95%	0.94%	0.1%	
Telecommunication	7.78	19.13	0.02	0.04	-59.3%	36082.21	36564.40	14.37%	14.47%	-1.3%	
Textile	21.95	26.69	0.06	0.06	-17.8%	7758.91	7768.80	3.09%	3.07%	-0.1%	
Travel & Leisure	5.59	1.95	0.01	0.00	186.5%	2103.79	2185.68	0.84%	0.86%	-3.7%	

MC= Market Capitalization, % Δ in Turnover= change in turnover from last day, % Δ in MC= change in Market cap from last day

Index Movers	Index Shakers	Sector wise P/E (Fd.)			
DELTALIFE	GP	Bank	9.24	NBFI	39.18
BXPHERMA	BATBC	Cement	34.84	Paper & Printing	82.37
HEIDELBCEM	SPCL	Ceramics	43.77	Pharmaceuticals & Chemicals	27.93
NATLIFEINS	BSRMSTEEL	Engineering	29.33	Power & Energy	15.72
GLAXOSMITH	SQURPHARMA	Food & Allied Product	30.61	Service & Real Estate	40.82
QSMRDYCELL	SUMITPOWER	Insurance	15.61	Tannery	50.63
MICEMENT	UNITEDAIR	IT	22.71	Telecommunication	27.09
BSC	MJLBD	Jute	61.36	Textile	18.17
IBNSINA	UPGDCL	Miscellaneous	36.07	Travel & Leisure	18.42
KDSALTD	BRACBANK				

## Important News

### Company News:

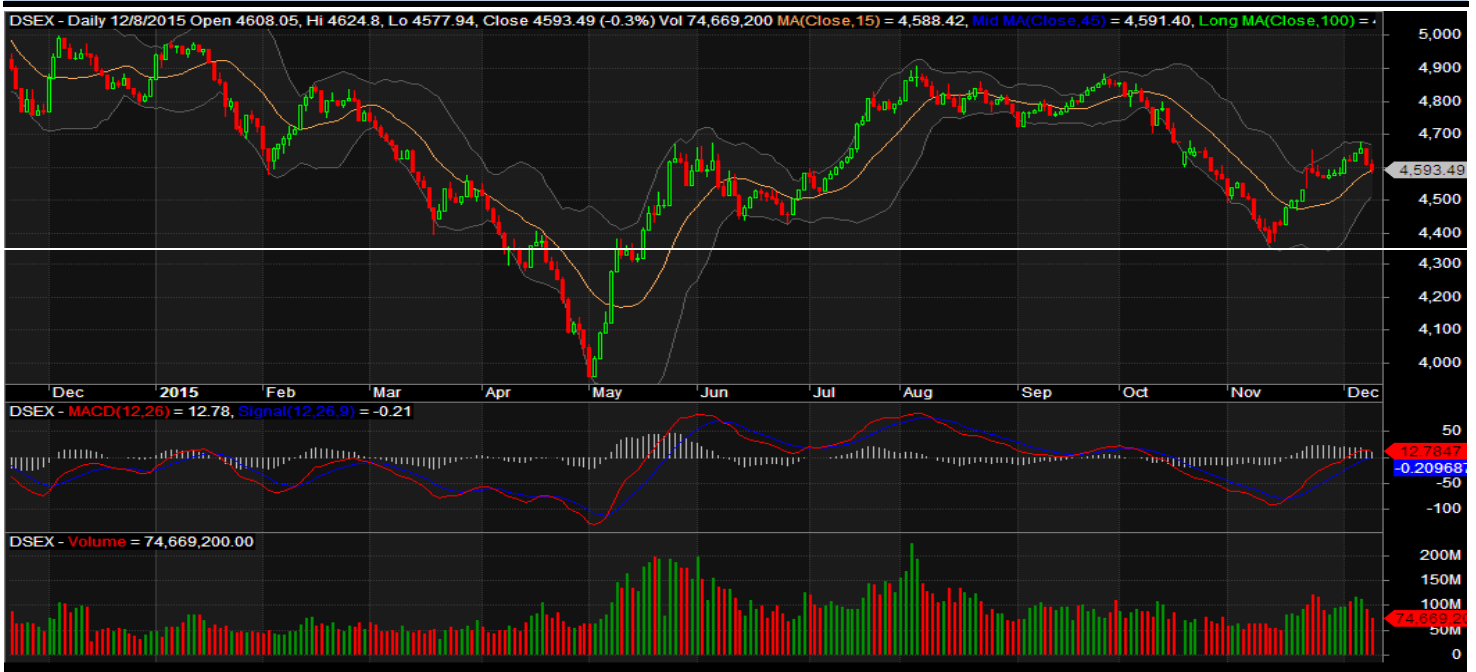
**BSRMSTEEL:** Starting of commercial production after completion of BMRE: The Company has further informed that the Board of Directors has declared to start its commercial production with enhanced capacity after successful completion of BMRE works, with effect from December 07, 2015.

## Recent Dividend Declaration

Ticker	Dividend	Record Date
Meghna Petroleum Limited	105%C	22.12.15
Jamuna Oil Company Limited	100%C	28.12.15

Note: C= cash Dividend, B= Bonus Dividend, R=Right, N/A=NotApplicable

## DSEX Technical Graph for last one year



### MTB CAPITAL LIMITED

Corporate head office

Level: 3, MTB Tower, 111, Kazi Nazrul Islam Avenue, Dhaka

Phone: 8321714, Fax: 8321543

[www.mtbcap.com](http://www.mtbcap.com)

*A Mutual Trust Bank Company*

*you can invest with us*

### Disclaimer

This report has been prepared by the MTB Capital Limited (MTBCL) on the basis of available information in the market and it is provided for the purposes only. It is not to be used as an offer for buying or selling any instruments. If anyone takes any action relying on this information, shall be responsible solely by him/her self for any consequences. The best care has been taken to make the report informative. MTBCL doesn't give any warrant or guarantee that the report or such information is fully accurate. The information that are provided here is the exclusive property of MTBCL and can not be distributed without prior consent of MTBCL.