

Today's Market Overview

Thursday, October 01, 2015

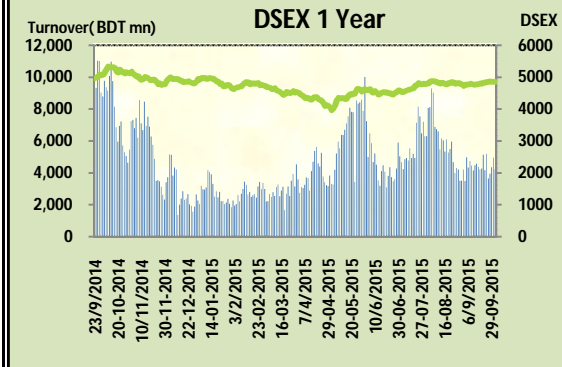


DSEX	4,856.97	0.10%	Issues Traded	Advanced	Declined	Unchanged
Turnover (BDT mn)	4,242.39	-14.36%		150	128	42

Market ended with a flat gain after two day's marginal fall with a sluggish turnover. Market opened with a slightly positive mood but soon after the first hour investors went for sell off thus created the market negative and throughout the session sellers dominated the market, again late hour buoyancy in some big cap stocks somehow managed to pull it back in green zone. Market witnessed interchanges among the sectors as investors were busy in choppy trading; Bank, NBFI & Engineering consumed the supply glut while Power, Mutual fund, IT & Service got high momentum. Other two indices DS30 & DSES the shariah based index both performed marginally positive. Most of the major sectors put a gaining performance while NBFI, Ceramics & Engineering were busy in loosing. Participation level was poor today as most of the investors tried to observe the market trend.

The general gauge DSEX ended at 4856.97 with an advance of +0.1% which added +4.88 points to the broad DSEX. The Turnover declined by +-14.4% which was only 711 Million BDT poorer than that of previous day and finally finished the mark at 4242.39 million BDT. A total of 150 issues advanced with 128 declined and 42 remained unchanged. Sectors that improved were: Cement (+0.2%) IT 9(+1.4%) Mutual Fund (+2.6%) Power (+0.9%) Service (+2.9%) Telecom (+0.2%) Travel (+3.2%) & sectors that declined were: Bank (-0.1%) Ceramics (-1.0%) Engineering (-0.5%) NBFI (-1.4%) Pharmaceuticals (-0.1%) Textile (-0.2%).

FARCHEM topped in the Volume chart with a turnover of 37.55 BDT crore. AIBL1STMF ranked top gainer chart with a price hike of +10.00% and 4THICB topped in the loser chart with a decline of -4.0% from its prevailing price. TITASGAS led the way in the index mover chart while ISLAMIBANK played the shatter part.



Index Scenario

	INDEX	Change	% Changes
DSEX	4856.97	4.88	0.1%
DSES	1182.14	1.24	0.1%
DS30	1851.27	3.30	0.2%

Market Highlights

DSEX 52 week H/L	5334/3960	Market P/E (LTM)	15.94
DSEX Week H/L	4867/4852	M.Cap (mn)	3359169.0
Group Performances			
Category	Mkt Cap (mn.)	Δ % M.Cap	Turnover BDT (mn)
Group A	2,630,913.77	0.2%	3,700.34
Group B	14,496.30	-0.5%	80.53
Group N	29,883.61	-1.1%	154.71
Group Z	25,296.78	-0.2%	39.20

Turnover Scenario

Today's Turnover (mn.)	Change In BDT (mn.)	% Change
4242.39	(711)	-14.4%

Top Ten Volume (in BDT. crore)

Stock	TT	YT	AT	% Δ in Turnover	TT/AT	CP	YP	% Δ P	Number of shares	Public Holding
FARCHEM	37.55	14.33	9.98	162.1%	276.2%	48.6	50.5	-3.8%	109,237,878.0	12%
SAIFPOWER	17.00	23.19	7.47	-26.7%	127.5%	93.7	91.1	2.9%	70,985,380.0	19%
SAPORTL	11.56	8.39	5.86	37.9%	97.4%	61.8	60	3.0%	171,762,330.6	24%
APOLOISPAT	10.49	12.21	6.08	-14.1%	72.5%	23.1	23.3	-0.9%	287,500,000.0	36%
DESCO	8.73	3.30	3.71	164.5%	135.3%	73.7	72.1	2.2%	378,637,909.1	9%
IDLC	8.22	9.57	5.30	-14.1%	55.0%	63.6	64.5	-1.4%	251,367,187.5	22%
BSRMSTEEL	7.43	13.07	7.84	-43.1%	-5.2%	94	95.8	-1.9%	341,775,000.0	13%
LAFSURCEML	7.38	8.05	10.00	-8.4%	-26.3%	107.5	107.6	-0.1%	1,161,373,500.0	30%
UNIQUEHRL	7.13	0.72	1.26	885.5%	467.3%	51.8	49.9	3.8%	294,400,000.0	24%
ACI	7.01	5.44	6.79	28.9%	3.2%	583.3	580.6	0.5%	39,553,240.3	27%

TT= Today's Turnover in crore, YT= Yesterday's Turnover in Crore, AT= Average of Last 20 day's Turnover, CP= Current Price, YP= Yesterday's Price, % Δ P= percentage change in price

Top Ten Gainer						Top Ten Loser					
Stock	CP	YP	AP	% Δ P	% Δ in P from AP	Stock	CP	YP	AP	% Δ P	% Δ in P from AP
AIBL1STIMF	7.7	7	6.31	10.0%	22.0%	4THICB	215.60	224.50	226.59	-4.0%	-4.8%
NCCBLMF1	5.6	5.1	4.92	9.8%	13.8%	ICB1STNRB	17.00	17.70	18.70	-4.0%	-9.1%
EBLNRBMF	4.6	4.2	4.355	9.5%	5.6%	DBH	95.80	99.60	97.25	-3.8%	-1.5%
EBL1STMF	4.7	4.4	4.47	6.8%	5.1%	FARCHEM	48.60	50.50	51.73	-3.8%	-6.0%
DBH1STMF	4.9	4.6	4.555	6.5%	7.6%	IMAMBUTTO	13.00	13.50	12.70	-3.7%	2.4%
1STPRIMFMF	11.5	10.8	10.85	6.5%	6.0%	KAY&QUE	15.10	15.60	14.26	-3.2%	5.9%
ARAMIT	391	368.7	331.92	6.0%	17.8%	MIDASFIN	16.90	17.40	16.03	-2.9%	5.4%
MODERNDYE	161.9	154.2	149.69	5.0%	8.2%	UNITEDFIN	21.50	22.10	20.88	-2.7%	3.0%
PHPMF1	4.5	4.3	4.34	4.7%	3.7%	APEXTANRY	127.60	130.90	140.84	-2.5%	-9.4%
PHPMF1	4.5	4.3	4.34	4.7%	3.7%	SAFKOSPINN	19.60	20.10	20.91	-2.5%	-6.3%

AP= Average Price of last 20 day,% Δ in P from AP= percentage change in price from the 20-day average price

Industry /Sectors overview (Amounts in BDT. Crore)											
Sector	Trade Volume		MKT Turnover %		% Δ in Turnover	Market Capitalization		% of Total MC		% Δ in MC	
	Today	Yesterday	Today	Yesterday		Today	Yesterday	Today	Yesterday		
Bank	32.52	56.36	0.08	0.12	-42.3%	41064.40	41113.07	15.23%	15.27%	-0.1%	
Cement	13.11	14.51	0.03	0.03	-9.7%	19071.33	19031.92	7.07%	7.07%	0.2%	
Ceramics	7.23	8.27	0.02	0.02	-12.6%	2764.56	2792.10	1.03%	1.04%	-1.0%	
Engineering	59.88	72.27	0.15	0.15	-17.1%	15479.46	15562.81	5.74%	5.78%	-0.5%	
Food & Allied Product	10.42	13.60	0.03	0.03	-23.4%	24391.29	24357.67	9.05%	9.05%	0.1%	
Insurance	5.77	5.83	0.01	0.01	-1.0%	7282.40	7272.08	2.70%	2.70%	0.1%	
IT	3.23	2.09	0.01	0.00	54.0%	558.98	551.53	0.21%	0.20%	1.4%	
Jute	0.66	0.45	0.00	0.00	46.5%	100.39	100.31	0.04%	0.04%	0.1%	
Miscellaneous	15.36	21.01	0.04	0.04	-26.9%	8959.99	8967.49	3.32%	3.33%	-0.1%	
Mutual Fund	15.41	9.58	0.04	0.02	60.9%	3581.41	3489.87	1.33%	1.30%	2.6%	
NBFI	27.05	45.16	0.07	0.10	-40.1%	8661.79	8781.04	3.21%	3.26%	-1.4%	
Paper & Printing	1.23	0.94	0.00	0.00	30.4%	226.82	225.04	0.08%	0.08%	0.8%	
Pharmaceuticals & Chemicals	73.68	73.65	0.19	0.16	0.0%	42048.57	42105.59	15.59%	15.64%	-0.1%	
Power & Energy	49.21	49.71	0.12	0.10	-1.0%	39454.72	39091.38	14.63%	14.52%	0.9%	
Service & Real Estate	32.92	34.07	0.08	0.07	-3.4%	2218.32	2155.66	0.82%	0.80%	2.9%	
Tannery	3.56	3.58	0.01	0.01	-0.7%	2569.93	2563.43	0.95%	0.95%	0.3%	
Telecommunication	9.27	28.33	0.02	0.06	-67.3%	40278.11	40198.58	14.94%	14.93%	0.2%	
Textile	23.75	23.79	0.06	0.05	-0.2%	8512.48	8531.44	3.16%	3.17%	-0.2%	
Travel & Leisure	13.80	10.57	0.03	0.02	30.5%	2425.16	2352.80	0.90%	0.87%	3.1%	

MC= Market Capitalization, % Δ in Turnover= change in turnover from last day, % Δ in MC= change in Market cap from last day

Index Movers	Index Shakers	Sector wise P/E			
TITASGAS	ISLAMIBANK	Bank	8.91	NBFI	35.74
GP	BSRMSTEEL	Cement	37.58	Paper & Printing	77.54
POWERGRID	DBH	Ceramics	39.02	Pharmaceuticals & Chemicals	27.90
DESCO	LINDEBD	Engineering	38.55	Power & Energy	16.73
UNIQUEHRL	UCBL	Food & Allied Product	35.21	Service & Real Estate	46.42
BRACBANK	RAK CERAMIC	Insurance	14.72	Tannery	34.51
PUBALIBANK	IDLC	IT	17.91	Telecommunication	24.95
UPGDCL	MARICO	Jute	168.43	Textile	17.52
MPETROLEUM	FARCHEM	Miscellaneous	35.20	Travel & Leisure	15.72
PREMIERCEM	IFADAUTOS				

Important News

Company News:

EHL: Dividend Declaration: The Board of Directors has recommended 15% cash dividend and 5% stock dividend for the year ended on July 31, 2015. Date of AGM: 12.11.2015, Time: 10:30 AM, Venue: Officer's Club, 26 Baily Road, Dhaka. Record Date: 21.10.2015. The Company has also reported EPS of Tk. 2.49, NAV per share of Tk. 70.28 and NOCFPS of Tk. 3.21 for the year ended on July 31, 2015.

SHURWID: EGM for increasing Authorized Capital:In connection to the order of the Honorable High Court on the Company matter No. 1 of 2015, the Company has informed that the Board of Directors has decided to hold an EGM to increase the Authorized Capital of the Company from Tk. 50.00 crore to Tk. 100.00 crore by amending Clause V of the Memorandum of Association and some Articles of the Articles of Association of the Company subject to approval of the shareholders in the EGM. (cont.1)

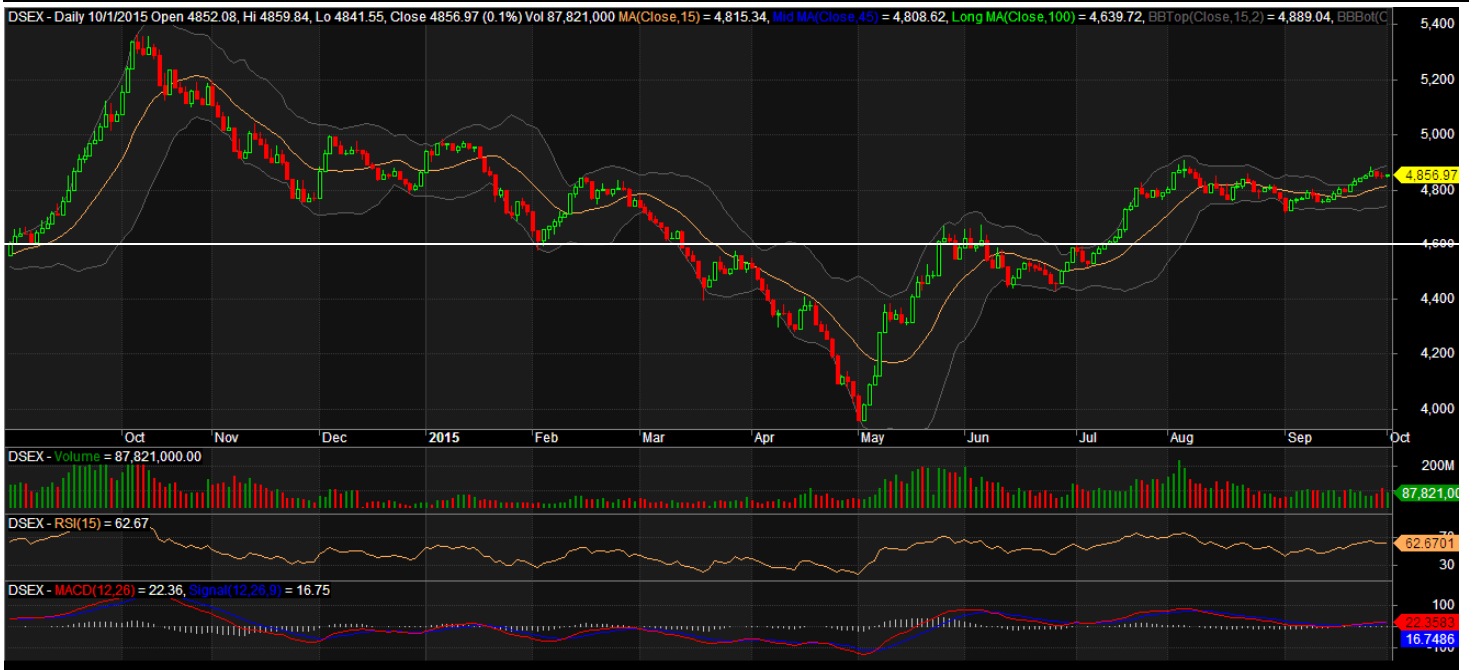
(continuation news of SHURWID): Date of EGM: 22.10.2015, Time of EGM: 10:15 AM, Venue: Factory Premises, Bi Mile, Konabari, Gazipur. Record Date for EGM: 15.10.2015.(end)

Recent Dividend Declaration

Ticker	Dividend	Record Date
Matin Spinning Mills Ltd.	27% C	08.10.15

Note: C= cash Dividend, B= Bonus Dividend, R=Right, N/A=NotApplicable

DSEX Technical Graph for last one year



MTB CAPITAL LIMITED

Corporate head office

Level: 3, MTB Tower, 111, Kazi Nazrul Islam Avenue, Dhaka

Phone: 8321714, Fax: 8321543

www.mtbcap.com

A mutual Trust Bank Company

you can invest with US

Disclaimer

This report has been prepared by the MTB Capital Limited (MTBCL) on the basis of available information in the market and it is provided for the purposes only. It is not to be used as an offer for buying or selling any instruments. If anyone takes any action relying on this information, shall be responsible solely by him/her self for any consequences. The best care has been taken to make the report informative. MTBCL doesn't give any warrant or guarantee that the report or such information is fully accurate. The information that are provided here is the exclusive property of MTBCL and can not be distributed without prior consent of MTBCL.