

Today's Market Overview



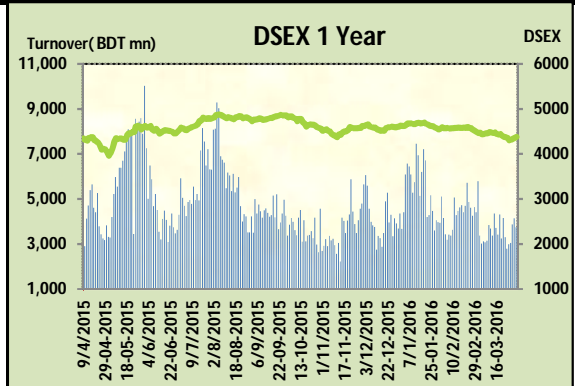
Sunday, April 03, 2016

DSEX	4,379.23	0.50%	Issues Traded	Advanced	Declined	Unchanged
Turnover (BDT mn)	3,739.84	-9.44%		176	100	39

Market continued the gaining streak for the consecutive four trading days with a slightly declined turnover. The premier bourse of the nation opened with a normal mood and initially sellers tried to put pressure but investors behaved sensibly and helped market to gain with the progression of time, though turnover was dull in the midsession as investors were expecting sale pressure from last week's buyers. Most of the major sectors tried to hold their positive movement but investors from Cement sectors were in discomfort with their holdings. Improved concentration occurred in Power, Service & IT. Turnover again mystified investors as it came down below 4 billion again. Other two indices DS30 & DSES the shariah based index both gained today. IT was the best gainer followed by Telecom, Power & food. Cement was the worst loser followed by Travel & Paper.

The general gauge DSEX ended at 4379.23 with an advance of +0.5% which added 21.69 points to the broad DSEX. The Turnover declined heavily by -9.4% which was 390 Million BDT poorer than that of previous day and finally finished the mark at 3739.84 million BDT. A total of 176 issues advanced with 100 declined and 39 remained unchanged. Sectors that improved were: Ceramics (+1.2%) Food (+2.1%) IT (+5.2%) Miscellaneous (+0.4%) NBFI (+0.2%) Pharmaceuticals (+0.6%) Power (+1.4%) Service (+0.4%) Textiles (+0.6%) Telecom (+3.0%) & Sectors that declined were: Bank (-0.1%) Cement (-1.5%) Jute (-0.2%) Paper (-0.9%) Travel (-1.0%)

LANKABAFIN topped in the Volume chart with a turnover of 17.50 BDT crore. ARAMITCEM ranked top in gainer chart with a price hike of +9.9% and BANKASIA topped in the loser chart with a decline of -13.0% from its prevailing price. GP led the way in the index mover chart while LAFSURCEML played the shatter part.



Index Scenario				Market Highlights				
	INDEX	Change	% Changes	DSEX 52 week H/L	4992/3960	Market P/E (LTM)	13.67	
DSEX	4379.23	21.69	0.5%	DSEX Week H/L	4379/4302	M.Cap	3036415.6	
DSES	1058.72	6.58	0.6%	Group Performances				
DS30	1650.89	1.94	0.1%	Category	Mkt Cap (mn.)	Δ % M.Cap	Turnover BDT (mn)	Δ % Turnover
Turnover Scenario				Group A	2,324,381.56	0.9%	3,020.93	-8.3%
Today's Turnover (mn.)	3739.84	(390)	-9.4%	Group B	11,822.07	-0.1%	68.47	-8.3%
				Group N	41,114.20	1.7%	512.51	-9.2%
				Group Z	41,278.03	-0.8%	120.26	-24.5%

Top Ten Volume (in BDT. crore)										
Stock	TT	YT	AT	% Δ in Turnover	TT/AT	CP	YP	% Δ P	Number of shares	Public Holding
LANKABAFIN	17.50	21.17	11.89	-17.3%	47.1%	35.6	34.6	2.9%	240,643,434.9	61%
KDSALTD	14.84	11.35	5.66	30.7%	162.1%	78.9	76.9	2.6%	52,000,000.0	21%
ORIONINFU	10.47	13.68	6.51	-23.5%	60.8%	74.5	73.9	0.8%	20,359,760.0	33%
POWERGRID	10.30	6.38	3.05	61.5%	237.8%	57.9	55.2	4.9%	460,912,991.0	5%
UPGDCL	9.86	7.15	6.68	38.0%	47.8%	159	153.9	3.3%	362,944,698.6	5%
GHAIL	9.74	7.31	2.90	33.2%	235.5%	30	29.1	3.1%	90,090,000.0	45%
BSRMLTD	9.23	13.77	12.20	-32.9%	-24.3%	190.9	194.7	-2.0%	173,351,038.0	9%
DSSL	9.01	10.37	13.85	-13.1%	-34.9%	18.1	19.1	-5.2%	100,000,000.0	56%
AMANFEED	8.17	19.11	11.53	-57.3%	-29.2%	85.2	81.9	4.0%	80,000,000.0	23%
CMCKAMAL	8.12	5.42	7.67	49.7%	5.9%	21	20.5	2.4%	96,811,412.6	59%

TT= Today's Turnover in crore, YT= Yesterday's Turnover in Crore, AT= Average of Last 20 day's Turnover, CP= Current Price, YP= Yesterday's Price, % Δ P= percentage change in price

 **Top Ten Gainer**

Top Ten Loser 

Stock	CP	YP	AP	% Δ P	% Δ in P from AP	Stock	CP	YP	AP	% Δ P	% Δ in P from AP
ARAMITCEM	35.4	32.2	34.83	9.9%	1.6%	BANKASIA	14.70	16.90	16.93	-13.0%	-13.1%
AAMRATECH	24.7	22.5	22.565	9.8%	9.5%	PHOENIXFIN	18.40	20.30	20.96	-9.4%	-12.2%
AZIZPIPES	33.5	30.6	32.815	9.5%	2.1%	JUTESPINN	52.10	57.20	54.25	-8.9%	-4.0%
KAY&QUE	18.5	17	18.94	8.8%	-2.3%	DULAMIACOT	6.70	7.10	6.84	-5.6%	-2.0%
POPULARLIF	81.4	76.4	76.7	6.5%	6.1%	UNITEDINS	23.30	24.60	25.58	-5.3%	-8.9%
AGNISYSL	20.4	19.3	19.825	5.7%	2.9%	DSSL	18.10	19.10	NM	-5.2%	NM
RDFOOD	15.2	14.4	14.945	5.6%	1.7%	SONARBAINS	14.10	14.80	14.81	-4.7%	-4.8%
BARKAPOWER	31.1	29.5	28.755	5.4%	8.2%	PARAMOUNT	12.30	12.80	12.75	-3.9%	-3.5%
DAFODILCOM	22.2	21.1	21.88	5.2%	1.5%	LRGLOBMF1	5.00	5.20	5.07	-3.8%	-1.3%
POWERGRID	57.9	55.2	50.975	4.9%	13.6%	ISLAMIINS	15.80	16.40	16.49	-3.7%	-4.2%

AP= Average Price of last 20 day,% Δ in P from AP= percentage change in price from the 20-day average price

Industry /Sectors overview (Amounts in BDT. Crore)

Sector	Trade Volume		MKT Turnover %		% Δ in Turnover	Market Capitalization		% of Total MC		% Δ in MC
	Today	Yesterday	Today	Yesterday		Today	Yesterday	Today	Yesterday	
Bank	23.13	27.75	0.06	0.07	-16.6%	37144.54	37167.96	15.40%	15.55%	-0.1%
Cement	9.68	11.97	0.03	0.03	-19.1%	13215.23	13412.06	5.48%	5.61%	-1.5%
Ceramics	8.44	10.15	0.02	0.03	-16.9%	2622.35	2591.74	1.09%	1.08%	1.2%
Engineering	65.16	62.30	0.18	0.16	4.6%	15504.35	15509.76	6.43%	6.49%	0.0%
Food & Allied Product	20.78	24.69	0.06	0.06	-15.8%	23087.44	22612.52	9.57%	9.46%	2.1%
Insurance	6.98	6.92	0.02	0.02	0.8%	7206.32	7178.61	2.99%	3.00%	0.4%
IT	13.85	8.35	0.04	0.02	65.8%	1037.38	986.02	0.43%	0.41%	5.2%
Jute	0.91	1.37	0.00	0.00	-33.1%	85.81	85.97	0.04%	0.04%	-0.2%
Miscellaneous	20.10	32.42	0.06	0.08	-38.0%	8427.73	8396.30	3.49%	3.51%	0.4%
Mutual Fund	3.35	3.21	0.01	0.01	4.4%	3646.66	3639.78	1.51%	1.52%	0.2%
NBFI	29.88	35.77	0.08	0.09	-16.5%	7981.05	7968.03	3.31%	3.33%	0.2%
Paper & Printing	0.39	0.33	0.00	0.00	19.6%	181.22	182.90	0.08%	0.08%	-0.9%
Pharmaceuticals & Chemicals	57.27	71.14	0.16	0.18	-19.5%	41149.56	40896.60	17.06%	17.11%	0.6%
Power & Energy	48.74	42.68	0.14	0.11	14.2%	32897.54	32428.75	13.64%	13.56%	1.4%
Service & Real Estate	8.73	6.26	0.02	0.02	39.4%	1656.92	1650.05	0.69%	0.69%	0.4%
Tannery	1.46	1.55	0.00	0.00	-5.9%	2206.99	2173.12	0.91%	0.91%	1.6%
Telecommunication	2.82	8.60	0.01	0.02	-67.2%	33321.62	32361.26	13.81%	13.54%	3.0%
Textile	34.77	32.20	0.10	0.08	8.0%	7899.90	7856.54	3.27%	3.29%	0.6%
Travel & Leisure	2.55	4.51	0.01	0.01	-43.4%	1954.30	1973.15	0.81%	0.83%	-1.0%

MC= Market Capitalization, % Δ in Turnover= change in turnover from last day, % Δ in MC= change in Market cap from last day

Index Movers	Index Shakers	Sector wise P/E (Fd.)			
GP	LAFSURCEML	Bank	8.26	NBFI	40.22
BATBC	BANKASIA	Cement	27.99	Paper & Printing	95.77
SQRPHARMA	BSRMLTD	Ceramics	34.18	Pharmaceuticals & Chemicals	26.36
UPGDCL	BRACBANK	Engineering	54.10	Power & Energy	16.02
POWERGRID	IDLC	Food & Allied Product	29.41	Service & Real Estate	27.54
KPCL	JAMUNAOIL	Insurance	13.41	Tannery	34.07
MARICO	BXPBARMA	IT	109.98	Telecommunication	26.19
DBH	PHOENIXFIN	Jute	159.27	Textile	17.14
MJLBD	PADMAOIL	Miscellaneous	33.74	Travel & Leisure	20.29
BATASHOE	UNIQUEHRL				

Important News

Company News:

CENTRALINS: Dividend Declaration: The Board of Directors has recommended 10% cash dividend for the year ended on December 31, 2015. Date of AGM: 02.06.2016, Time: 11:00 AM, Venue: Will be notified later on. Record Date: 26.04.2016. The Company has also reported EPS of Tk. 1.54, NAV per share of Tk. 22.10 and NOCFPS of Tk. 1.18 for the year ended on December 31, 2015 as against Tk. 2.21, Tk. 22.91 and Tk. 1.89 respectively for the year ended on December 31, 2014.

NORTHRINS: Dividend Declaration: The Board of Directors has recommended 12% stock dividend for the year ended on December 31, 2015. Date of AGM: 02.06.2016, Time: 10:00 AM, Venue: Institution of Diploma Engineers, Bangladesh, IDEB Bhaban, 160/A, Kakrail, Dhaka-1000. Record Date: 24.04.2016. The Company has also reported EPS of Tk. 1.85, NAV per share of Tk. 20.67 and NOCFPS of Tk. 1.10 for the year ended on December 31, 2015 as against Tk. 1.84, Tk. 18.82 and Tk. 0.67 respectively for the year ended on December 31, 2014.

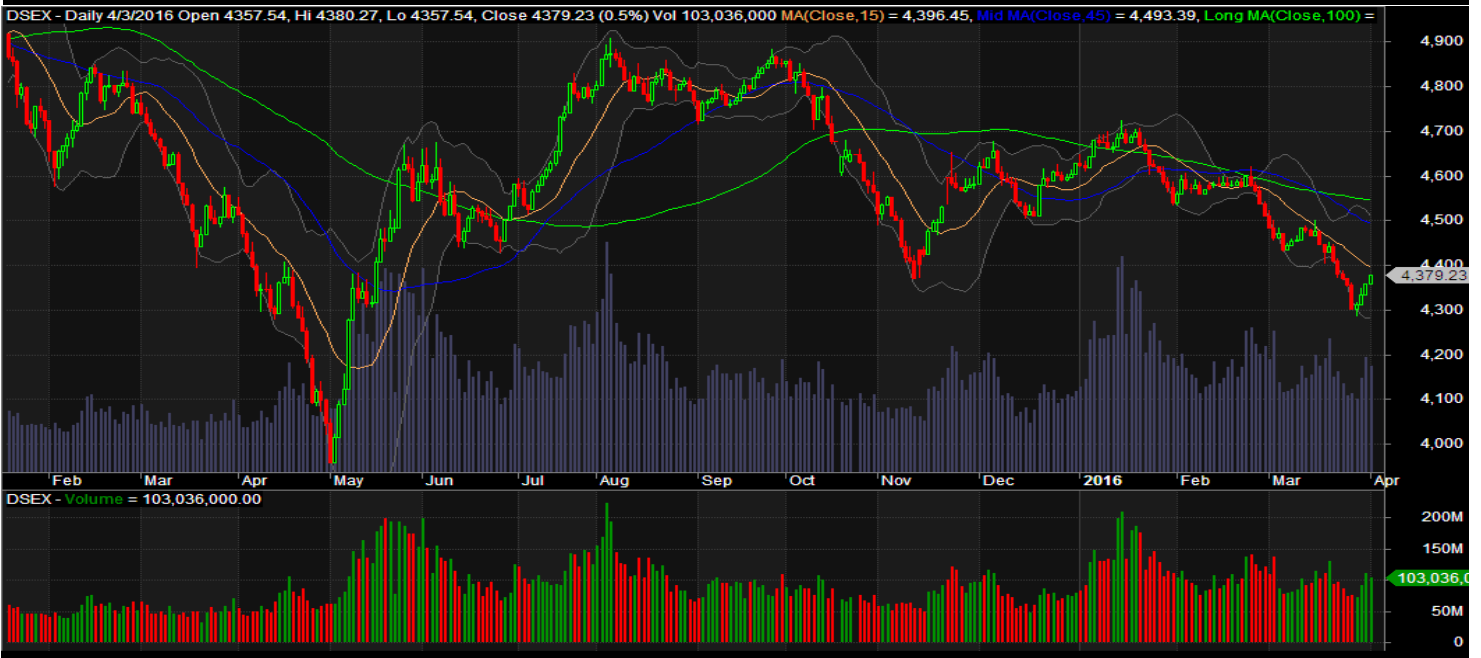
PREMIERLEA: Dividend Declaration: The Board of Directors has recommended 5% stock dividend for the year ended on 31.12.2015. Date of AGM: 19.05.2016, Time: 11:00 AM, Venue: Spectra Convention Centre Ltd., House No.19, Road No.7, Gulshan-1, Dhaka. Record Date: 24.04.2016. The Company has also reported Consolidated EPS of Tk. 0.54, Consolidated NAV per share of Tk. 12.13 and Consolidated NOCFPS of Tk. (10.53) for the year ended on 31.12.2015 as against Tk. 0.07, Tk. 11.55 and Tk. (8.95) respectively for the year ended on 31.12. 2014.

Recent Dividend Declaration

Ticker	Dividend	Record Date
Lafarge Surma Cement Limited	5% C (Final)	13.04.16
Prime Bank Limited	15% C	11.04.2016
Al-Arafah Islami Bank Limited	10% C & 5% B	10.04.2016
Uttara Bank Ltd.	20% C	07.04.2016

Note: C= cash Dividend, B= Bonus Dividend, R=Right, N/A=NotApplicable

DSEX Technical Graph for last one year



MTB CAPITAL LIMITED

Corporate head office

Level: 3, MTB Tower, 111, Kazi Nazrul Islam Avenue, Dhaka

Phone: 8321714, Fax: 8321543

www.mtbcap.com

A Mutual Trust Bank Company

you can invest with us

Disclaimer

This report has been prepared by the MTB Capital Limited (MTBCL) on the basis of available information in the market and it is provided for the purposes only. It is not to be used as an offer for buying or selling any instruments. If anyone takes any action relying on this information, shall be responsible solely by him/her self for any consequences. The best care has been taken to make the report informative. MTBCL doesn't give any warrant or guarantee that the report or such information is fully accurate. The information that are provided here is the exclusive property of MTBCL and can not be distributed without prior consent of MTBCL.