

# Today's Market Overview



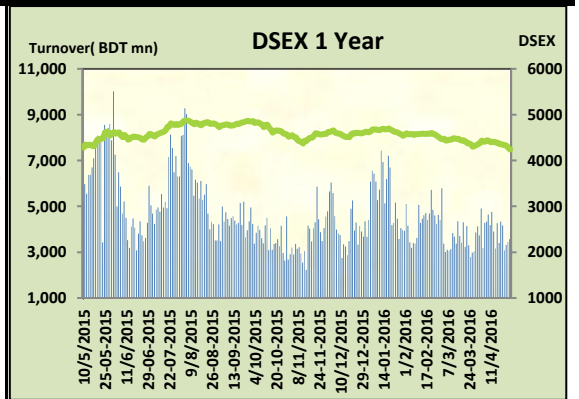
Wednesday, April 27, 2016

<b>DSEX</b>	4,238.95	<b>-1.00%</b>	<b>Issues Traded</b>	↑ <b>Advanced</b> 53	↓ <b>Declined</b> 224	↔ <b>Unchanged</b> 40
<b>Turnover (BDT mn)</b>	3,564.38	<b>3.72%</b>				

Market continued the bearish run for the consecutive five trading sessions with a slightly improved turnover. The premier bourse opened with a negative mood and observed a recovery stance before the midsession but sellers didn't allow to flourish upward rather vigorous selling attitude kept plunging the market with the progression of time and market hit the lowest after 238 trading sessions from the mid of 2015. Trading pattern showed investors suffered from fear as some pending issues like adjustment of Banks' exposure in capital market worked as condenser in investors' mind. All the major sectors failed to perform as investors shown less interest in trading. Participation level was very poor throughout the session but some opportunist buoyancy in late hour helped to cross the turnover above 3.5 billion. There was not a single sectors which gained, all of them were in losing side. Other two indices DS30 & DSES the shariah based index both performed very poor.

The general gauge DSEX ended at 4238.95 with a decline of -1.00% which cut 42.98 points from the broad DSEX. The Turnover advanced slightly by +3.7% which was 128 Million BDT healthier than that of previous day and finally finished the mark at 3564.38 million BDT. A total of 53 issues advanced with 224 declined and 40 remained unchanged & Sectors that declined were: Bank (-1.5%) Cement (-0.7%) Engineering (-2.3%) Food (-0.9%) Power (-0.3%) Pharmaceuticals (-0.7%) NBFI (-1.4%) Telecom (-0.6%) Insurance (-2.0%) Service (-1.6%) Textiles (-1.7%)

JAMUNAOIL topped in the Volume chart with a turnover of 13.04 BDT crore. ICB1STNRB ranked top in gainer chart with a price hike of +7.3 % and SAFKOSPIN topped in the loser chart with a decline of -26.3% from its prevailing price. MPETROLEUM led the way in the index mover chart while GP played the shatter part.



Index Scenario				Market Highlights				
	<b>INDEX</b>	<b>Change</b>	<b>% Changes</b>	<b>DSEX 52 week H/L</b>	4992/3960	<b>Market P/E (LTM)</b>	13.45	
	DSEX	(42.98)	<b>-1.00%</b>	<b>DSEX Week H/L</b>	4340/4238	<b>M.Cap</b>	3023829.9	
	DSES	(10.07)	<b>-0.96%</b>	<b>Group Performances</b>				
	DS30	(14.22)	<b>-0.86%</b>	<b>Category</b>	<b>Mkt Cap (mn.)</b>	<b>Δ % M.Cap</b>	<b>Turnover BDT (mn)</b>	<b>Δ % Turnover</b>
	<b>Turnover Scenario</b>			<b>Group A</b>	2,303,556.33	<b>-1.0%</b>	2,362.18	<b>-17.7%</b>
<b>Today's Turnover (mn.)</b>	<b>Change In BDT (mn.)</b>	<b>% Change</b>		<b>Group B</b>	10,711.53	<b>-0.7%</b>	56.36	<b>-14.5%</b>
3564.38	128	<b>3.7%</b>		<b>Group N</b>	40,822.45	<b>-1.1%</b>	227.93	<b>-25.4%</b>
				<b>Group Z</b>	37,807.83	<b>-1.1%</b>	59.31	<b>-38.9%</b>

Top Ten Volume (in BDT. crore)										
Stock	TT	YT	AT	% Δ in Turnover	TT/AT	CP	YP	% Δ P	Number of shares	Public Holding
JAMUNAOIL	13.04	6.81	7.33	91.6%	78.0%	198.9	195	2.0%	110,424,600.0	20%
BSRMLTD	12.75	40.61	12.94	-68.6%	-1.5%	132.2	141.2	-6.4%	190,686,141.8	9%
MJLBD	12.59	14.56	11.12	-13.5%	13.2%	102.1	101.5	0.6%	274,244,180.0	9%
MPETROLEUM	9.64	5.23	4.21	84.3%	129.0%	184	175.7	4.7%	108,216,108.0	17%
UPGDCL	9.31	18.94	8.01	-50.8%	16.3%	159.8	162.8	-1.8%	362,944,698.6	5%
SQURPHARMA	7.60	7.09	5.96	7.2%	27.6%	253.5	255.1	-0.6%	623,586,546.0	9%
DOREENPWR	6.16	7.62	16.56	-19.2%	-62.8%	57.5	60.3	-4.6%	80,000,000.0	23%
PREMIERCCEM	5.84	0.99	1.93	488.0%	201.8%	92.3	87.7	5.2%	105,450,000.0	10%
POWERGRID	5.38	7.00	7.23	-23.2%	-25.6%	59.2	60.2	-1.7%	460,912,991.0	5%
EASTRNLAB	5.28	0.35	1.02	1397.7%	415.1%	1288.9	1309.1	-1.5%	994,000.0	14%

TT= Today's Turnover in crore, YT= Yesterday's Turnover in Crore, AT= Average of Last 20 day's Turnover, CP= Current Price, YP= Yesterday's Price, % Δ P= percentage change in price

 **Top Ten Gainer**

**Top Ten Loser** 

Stock	CP	YP	AP	% Δ P	% Δ in P from AP	Stock	CP	YP	AP	% Δ P	% Δ in P from AP
ICB1STNRB	19.2	17.9	19.085	7.3%	0.6%	SAFKOSPINN	11.20	15.20	15.86	-26.3%	-29.4%
7THICB	112	104.5	110.27	7.2%	1.6%	RUPALIINS	12.80	14.60	15.42	-12.3%	-17.0%
MIRACLEIND	27.6	26	27.405	6.2%	0.7%	ECABLES	156.70	174.10	132.17	-10.0%	18.6%
PREMIERCEM	92.3	87.7	92.515	5.2%	-0.2%	NLTUBES	78.40	87.10	84.02	-10.0%	-6.7%
MPETROLEUM	184	175.7	159.435	4.7%	15.4%	BEACHHATCI	9.30	10.30	12.77	-9.7%	-27.1%
DULAMIAACOT	6.9	6.6	6.935	4.5%	-0.5%	ICB	92.20	101.80	101.16	-9.4%	-8.9%
ANWARGALV	68.4	65.9	67.48	3.8%	1.4%	GSPFINANCE	12.50	13.80	14.25	-9.4%	-12.3%
KDSALTD	55.3	53.3	68.06	3.8%	-18.7%	MERCANBAN	9.70	10.70	10.98	-9.3%	-11.6%
PROVATHINS	12.3	11.9	12.665	3.4%	-2.9%	ZAHINTEX	17.10	18.80	19.99	-9.0%	-14.4%
HAKKANIPUL	42.3	41.2	46.585	2.7%	-9.2%	NORTHERN	243.80	267.10	240.84	-8.7%	1.2%

AP= Average Price of last 20 day,% Δ in P from AP= percentage change in price from the 20-day average price

**Industry /Sectors overview (Amounts in BDT. Crore)**

Sector	Trade Volume		MKT Turnover %		% Δ in Turnover	Market Capitalization		% of Total MC		% Δ in MC
	Today	Yesterday	Today	Yesterday		Today	Yesterday	Today	Yesterday	
Bank	17.91	18.15	0.07	0.06	-1.3%	35477.45	36009.18	14.86%	14.94%	-1.5%
Cement	11.43	6.13	0.04	0.02	86.5%	12619.41	12713.48	5.29%	5.27%	-0.7%
Ceramics	2.33	2.94	0.01	0.01	-20.8%	2412.18	2435.92	1.01%	1.01%	-1.0%
Engineering	36.55	71.83	0.14	0.22	-49.1%	13925.41	14260.17	5.83%	5.92%	-2.3%
Food & Allied Product	13.09	25.39	0.05	0.08	-48.5%	23478.02	23694.62	9.84%	9.83%	-0.9%
Insurance	5.62	7.16	0.02	0.02	-21.6%	6763.68	6900.51	2.83%	2.86%	-2.0%
IT	2.49	4.72	0.01	0.01	-47.3%	922.14	927.89	0.39%	0.38%	-0.6%
Jute	0.70	3.27	0.00	0.01	-78.7%	86.75	92.70	0.04%	0.04%	-6.4%
Miscellaneous	13.45	14.11	0.05	0.04	-4.7%	8144.20	8196.74	3.41%	3.40%	-0.6%
Mutual Fund	1.70	1.45	0.01	0.00	17.1%	3542.34	3563.46	1.48%	1.48%	-0.6%
NBFI	10.48	13.54	0.04	0.04	-22.6%	7577.25	7685.00	3.17%	3.19%	-1.4%
Paper & Printing	0.23	0.35	0.00	0.00	-35.9%	146.84	146.94	0.06%	0.06%	-0.1%
Pharmaceuticals & Chemicals	37.85	45.24	0.14	0.14	-16.3%	40554.57	40842.20	16.99%	16.95%	-0.7%
Power & Energy	79.31	80.18	0.30	0.24	-1.1%	34680.96	34786.06	14.53%	14.43%	-0.3%
Service & Real Estate	3.97	4.26	0.01	0.01	-6.8%	1636.61	1662.94	0.69%	0.69%	-1.6%
Tannery	1.87	2.35	0.01	0.01	-20.3%	2178.16	2180.12	0.91%	0.90%	-0.1%
Telecommunication	6.38	5.49	0.02	0.02	16.1%	35476.75	35703.72	14.86%	14.81%	-0.6%
Textile	19.72	20.29	0.07	0.06	-2.8%	7298.89	7428.89	3.06%	3.08%	-1.7%
Travel & Leisure	2.39	1.91	0.01	0.01	25.0%	1750.42	1785.96	0.73%	0.74%	-2.0%

MC= Market Capitalization, % Δ in Turnover= change in turnover from last day, % Δ in MC= change in Market cap from last day

Index Movers	Index Shakers	Sector wise P/E (Fd.)			
MPETROLEUM	GP	Bank	7.43	NBFI	30.32
PREMIERCEM	BSRMLTD	Cement	24.29	Paper & Printing	81.72
JAMUNAOIL	ISLAMIBANK	Ceramics	33.67	Pharmaceuticals & Chemicals	26.38
PADMAOIL	UPGDCL	Engineering	94.80	Power & Energy	17.12
KPCL	BATBC	Food & Allied Product	30.17	Service & Real Estate	28.75
BSRMSTEEL	LAFSURCEML	Insurance	12.12	Tannery	33.44
LANKABAFIN	SQURPHARMA	IT	95.24	Telecommunication	21.90
MJLBD	ABBANK	Jute	464.76	Textile	16.47
SHAHJABANK	MERCANBANK	Miscellaneous	34.06	Travel & Leisure	17.65
PREMIERBAN	SPCL				

## Important News

### Company News:

**SAFKOSPINN: Dividend Declaration:** The Board of Directors has recommended 3% stock dividend for the year ended on 31.12.2015. Date of AGM: 04.06.2016, Time: 11:30 AM, Venue: Conference Hall of Safko Spinning Mills Ltd. Noyanpara, P.O. Saihamnagar, P.S. Madhabpur, Dist. Habigonj. Record Date: 18.05.2016. The Company has also reported EPS of Tk. 0.51, NAV per share of Tk. 18.49 and NOCFPS of Tk. 2.65 for the year ended on 31.12.2015 as against Tk. 1.05 (restated), Tk. 21.95 and Tk. 1.69 respectively for the year ended on 31.12. 2014.

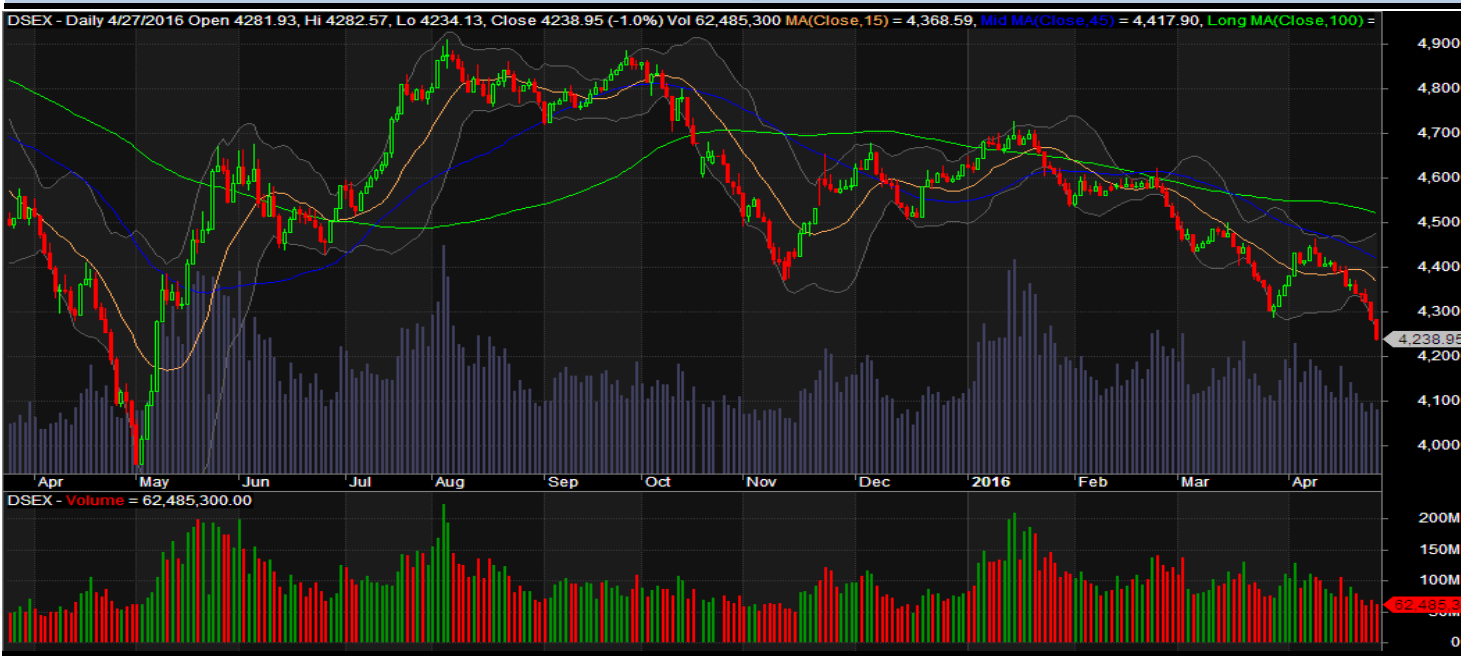
**BARKAPOWEE: Q3 Financials:** (Q3 Un-audited): Consolidated EPS was Tk. 0.78 for January-March, 2016 as against Tk. 0.71 for January-March, 2015; Consolidated EPS was Tk. 2.39 for July, 2015-March, 2016 as against Tk. 2.08 for July, 2014-March, 2015. Consolidated NOCFPS was Tk. 4.73 for July, 2015-March, 2016 as against Tk. 2.56 for July, 2014-March, 2015. Consolidated NAV per share was Tk. 19.60 as of March 31, 2016 and Tk. 19.39 as of June 30, 2015.

## Recent Dividend Declaration

Ticker	Dividend	Record Date
Beximco Pharmaceuticals Limited	10% C & 5% B	12.05.2016
Bangladesh Export Import Co. Ltd..	15% B	12.05.2016
Dragon Sweater and Spinning Limited	15% B	12.05.2016
EXIM Bank of Bangladesh Ltd.	12% C	15.05.2016
Brac Bank Limited	25% C	12.05.2016
Islami Bank Limited	20% C	11.05.2016

Note: C= cash Dividend, B= Bonus Dividend, R=Right, N/A=NotApplicable

## DSEX Technical Graph for last one year



### MTB CAPITAL LIMITED

Corporate head office

Level: 3, MTB Tower, 111, Kazi Nazrul Islam Avenue, Dhaka

Phone: 8321714, Fax: 8321543

[www.mtbcap.com](http://www.mtbcap.com)

*A Mutual Trust Bank Company*

*you can invest with us*

### Disclaimer

This report has been prepared by the MTB Capital Limited (MTBCL) on the basis of available information in the market and it is provided for the purposes only. It is not to be used as an offer for buying or selling any instruments. If anyone takes any action relying on this information, shall be responsible solely by him/her self for any consequences. The best care has been taken to make the report informative. MTBCL doesn't give any warrant or guarantee that the report or such information is fully accurate. The information that are provided here is the exclusive property of MTBCL and can not be distributed without prior consent of MTBCL.