

# Today's Market Overview

Monday, March 07, 2016

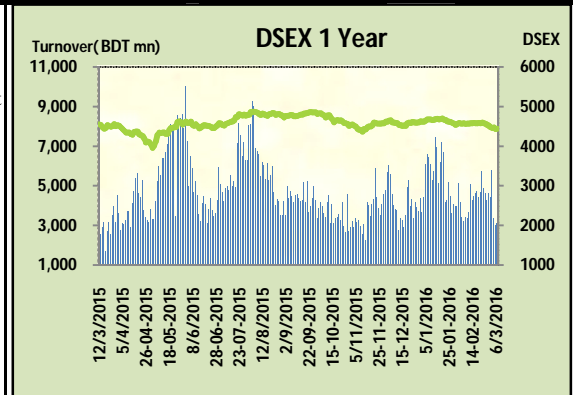


<b>DSEX</b>	4,443.63	0.18%	<b>Issues Traded</b>	↑ <b>Advanced</b> 159	↓ <b>Declined</b> 110	↔ <b>Unchanged</b> 48
<b>Turnover (BDT mn)</b>	3,109.50	3.6%				

Market ended in green zone with a slightly improved turnover but the confidence level remained in bottom. The premier bourse of the nation opened with a positive mood and continued the same mood till the closure. Market observed several ups and downs but the participation level was very poor and active investors kept themselves busy in choppy trading. Most of the major sectors performed mixed and market was less vibrant as investors were not enthusiastic due to lack of trust. Notable concentration occurred in Textile, Telecom & Insurance. Market somehow crossed 3.1 billion mark as small investors tried to take position in some stocks while found petite sale pressure in some sectors specially in Engineering and other small cap stocks. Other two indices DS30 & DSES The shariah based index failed to cross red border. Among the major sectors Cement, Food & Telecom Performed poor while Engineering, NBFi & Bank ended with positive mark.

The general gauge DSEX ended at 4443.63 with an advance of +0.2% which added 8.17 points to the broad DSEX. The Turnover advanced slightly by +3.6% which was 107 Million BDT healthier than that of previous day and finally finished the mark at 3109.50 million BDT. A total of 159 issues advanced with 110 declined and 48 remained unchanged. Sectors that improved were: Bank (+0.3%) Engineering (+3.1%) IT (+0.5%) Insurance (+0.7%) Jute (+1.3%) NBFi (+0.6%) Power (+0.2%) Textiles (+0.4%) Travel (+0.7%) & Sectors that declined were: Cement (-1.7%) Ceramics (-1.3%) Food (-0.47%) Pharmaceuticals (-0.1%) Telecom (-0.6%) Tannery (-0.7%).

BSRMLTD topped in the Volume chart with a turnover of 18.60 BDT crore. QSMRDYCEL ranked top gainer chart with a price hike of +9.8% and GREENDELTD topped in the loser chart with a decline of -7.3% from its prevailing price. BSRMSTEEL led the way in the index mover chart while GP played the shatter part.



Index Scenario				Market Highlights				
INDEX	Change	% Changes		DSEX 52 week H/L	4992/3960	Market P/E (LTM)	14.07	
DSEX	4443.63	8.17	0.2%	DSEX Week H/L	4484/4435	M.Cap (mn)	3085487.5	
DSES	1077.74	(1.12)	-0.1%	Group Performances				
DS30	1703.31	(0.47)	0.0%	Category	Mkt Cap (mn.)	Δ % M.Cap	Turnover BDT (mn)	Δ % Turnover
Turnover Scenario				Group A	2,372,295.04	0.1%	2,651.91	0.3%
Today's Turnover (mn.)	Change In BDT (mn.)	% Change		Group B	12,032.92	1.1%	57.80	5.0%
3109.50	107	3.6%		Group N	34,444.23	-0.5%	179.35	-30.5%
				Group Z	33,506.14	1.0%	43.51	25.3%

Top Ten Volume (in BDT. crore)										
Stock	TT	YT	AT	% Δ in Turnover	TT/AT	CP	YP	% Δ P	Number of shares	Public Holding
BSRMLTD	18.60	32.05	23.24	-42.0%	-20.0%	178.5	167.4	6.6%	173,351,038.0	9%
ORIONPHARM	16.58	8.90	6.89	86.2%	140.6%	40.7	39	4.4%	234,000,000.0	44%
QSMRDYCELL	16.42	9.35	9.16	75.7%	79.3%	101.9	92.8	9.8%	40,479,436.8	54%
LANKABAFIN	11.66	12.96	16.23	-10.0%	-28.2%	39.7	39	1.8%	240,643,434.9	61%
MALEKSPIN	10.42	0.84	0.85	1141.6%	1127.3%	17.9	16.8	6.5%	193,600,000.0	36%
CMCKAMAL	9.82	9.16	7.11	7.3%	38.1%	21.4	21.3	0.5%	96,811,412.6	59%
UPGDCL	9.59	7.40	15.28	29.5%	-37.3%	160.8	162	-0.7%	362,944,698.6	5%
SUMITPOWER	8.29	6.81	6.35	21.7%	30.7%	42.1	41.7	1.0%	714,284,847.2	15%
BSRMSTEEL	7.34	2.87	5.30	155.7%	38.5%	91.4	85.7	6.7%	341,775,000.0	13%
BSCCL	7.13	2.36	3.00	201.6%	137.7%	109.9	104.8	4.9%	164,905,510.0	14%

TT= Today's Turnover in crore, YT= Yesterday's Turnover in Crore, AT= Average of Last 20 day's Turnover, CP= Current Price, YP= Yesterday's Price, % Δ P= percentage change in price

Top Ten Gainer						Top Ten Loser					
Stock	CP	YP	AP	% Δ P	% Δ in P from AP	Stock	CP	YP	AP	% Δ P	% Δ in P from AP
QSM DRYCELL	101.9	92.8	115.925	9.8%	-12.1%	GREENDEL T	47.00	50.70	50.66	-7.3%	-7.2%
AZIZPIPES	33.3	30.5	34.66	9.2%	-3.9%	PRAGATIINS	25.90	27.80	27.28	-6.8%	-5.1%
NITOLINS	24.4	22.5	24.405	8.4%	0.0%	SHYAMP SUG	6.20	6.60	6.40	-6.1%	-3.0%
AAMRATECH	23.3	21.5	22.41	8.4%	4.0%	ISNLTD	14.90	15.70	15.47	-5.1%	-3.7%
EASTRN LUB	630.9	586.9	593.075	7.5%	6.4%	MEGH NAPET	5.10	5.30	5.26	-3.8%	-3.0%
GEMINISEA	610.3	567.8	563.35	7.5%	8.3%	MEGH NAPET	5.10	5.30	5.26	-3.8%	-3.0%
BSRMSTEEL	91.4	85.7	90.49	6.7%	1.0%	UNITEDAIR	5.90	6.10	6.62	-3.3%	-10.8%
BSRMLTD	178.5	167.4	170.17	6.6%	4.9%	ITC	48.60	50.20	52.35	-3.2%	-7.2%
MALEKSPIN	17.9	16.8	16.435	6.5%	8.9%	AGRANINS	16.20	16.70	16.76	-3.0%	-3.3%
RUPALLIFE	44.5	41.9	37.005	6.2%	20.3%	TRUSTBANK	20.00	20.60	21.77	-2.9%	-8.1%

AP= Average Price of last 20 day, % Δ in P from AP= percentage change in price from the 20-day average price

Industry /Sectors overview (Amounts in BDT. Crore)											
Sector	Trade Volume		MKT Turnover %		% Δ in Turnover	Market Capitalization		% of Total MC		% Δ in MC	
	Today	Yesterday	Today	Yesterday		Today	Yesterday	Today	Yesterday		
Bank	19.81	26.96	0.07	0.09	-26.5%	38297.41	38195.01	15.65%	15.62%	0.3%	
Cement	8.07	17.85	0.03	0.06	-54.8%	14229.29	14476.57	5.81%	5.92%	-1.7%	
Ceramics	2.87	3.30	0.01	0.01	-13.1%	2602.81	2636.09	1.06%	1.08%	-1.3%	
Engineering	69.58	74.18	0.24	0.25	-6.2%	15607.75	15140.91	6.38%	6.19%	3.1%	
Food & Allied Product	9.45	9.03	0.03	0.03	4.7%	23103.00	23189.54	9.44%	9.48%	-0.4%	
Insurance	9.57	7.42	0.03	0.03	29.0%	7388.83	7340.61	3.02%	3.00%	0.7%	
IT	6.16	7.64	0.02	0.03	-19.3%	931.56	926.63	0.38%	0.38%	0.5%	
Jute	1.31	0.42	0.00	0.00	212.0%	81.92	80.87	0.03%	0.03%	1.3%	
Miscellaneous	11.83	14.44	0.04	0.05	-18.1%	8235.65	8234.25	3.36%	3.37%	0.0%	
Mutual Fund	1.67	1.63	0.01	0.01	2.6%	3648.24	3636.47	1.49%	1.49%	0.3%	
NBFI	21.70	23.93	0.08	0.08	-9.3%	8398.05	8350.58	3.43%	3.41%	0.6%	
Paper & Printing	0.30	0.54	0.00	0.00	-44.0%	187.24	187.97	0.08%	0.08%	-0.4%	
Pharmaceuticals & Chemicals	35.75	34.05	0.12	0.12	5.0%	40878.54	40905.21	16.70%	16.72%	-0.1%	
Power & Energy	31.30	30.88	0.11	0.11	1.4%	32569.46	32489.49	13.31%	13.28%	0.2%	
Service & Real Estate	2.84	3.44	0.01	0.01	-17.3%	1668.99	1659.30	0.68%	0.68%	0.6%	
Tannery	1.18	0.80	0.00	0.00	47.2%	2188.05	2203.68	0.89%	0.90%	-0.7%	
Telecommunication	10.72	5.58	0.04	0.02	91.9%	34908.17	35121.13	14.26%	14.36%	-0.6%	
Textile	39.95	25.31	0.14	0.09	57.9%	7892.50	7863.17	3.22%	3.21%	0.4%	
Travel & Leisure	4.01	4.43	0.01	0.02	-9.4%	1955.45	1942.13	0.80%	0.79%	0.7%	

MC= Market Capitalization, % Δ in Turnover= change in turnover from last day, % Δ in MC= change in Market cap from last day

Index Movers	Index Shakers	Sector wise P/E (Fd.)			
BSRMSTEEL	GP	Bank	8.57	NBFI	41.07
BSRMLTD	LAFSURCEML	Cement	30.42	Paper & Printing	100.97
BSCCL	BATBC	Ceramics	35.47	Pharmaceuticals & Chemicals	27.11
BRACBANK	UPGDCL	Engineering	54.06	Power & Energy	15.44
DUTCHBANGL	RENATA	Food & Allied Product	29.38	Service & Real Estate	28.96
PRIMEBANK	BXPHERMA	Insurance	13.14	Tannery	54.08
ORIONPHARM	RAK CERAMIC	IT	85.30	Telecommunication	27.34
QSM DRYCELL	MARICO	Jute	151.00	Textile	17.12
DESCO	GREENDEL T	Miscellaneous	35.62	Travel & Leisure	20.85
PUBALIBANK	TRUSTBANK				

## Important News

### Company News:

**PREMIERCEM:** Revaluation of Property, Plant and Equipment: The Company has informed that the Board of Directors has approved the revaluation of its Property, Plant and Equipment. The Revaluation amount was shown as Tk. 4,910,383,237.00 resulting a Revaluation Surplus of Tk. 1,153,552,951.00 from the Book value of Tk. 3,756,830,286.00 as on 30.06.2015. Total NAV as on 30.06.2015 before revaluation stood at Tk. 3,147,359,273.00 and NAV per share stood at Tk. 29.85. Total NAV as on 30.06.2015 after revaluation stood at Tk. 3,849,655,548.00 and NAV per share stood at Tk. 36.51.

The Company has informed that the Board of Directors have taken the following decisions: "1. Steps may be taken to arrange sales of unused Raw Materials and Machineries of Unit-1 (Carbon Rod Unit) & Unit-2 (Alkatra Unit) to the interested parties at a reasonable price. The machineries and equipments which have expired the economic life/become obsolete, for which no interested party is found to purchase at reasonable price, may be sold as scrap materials.

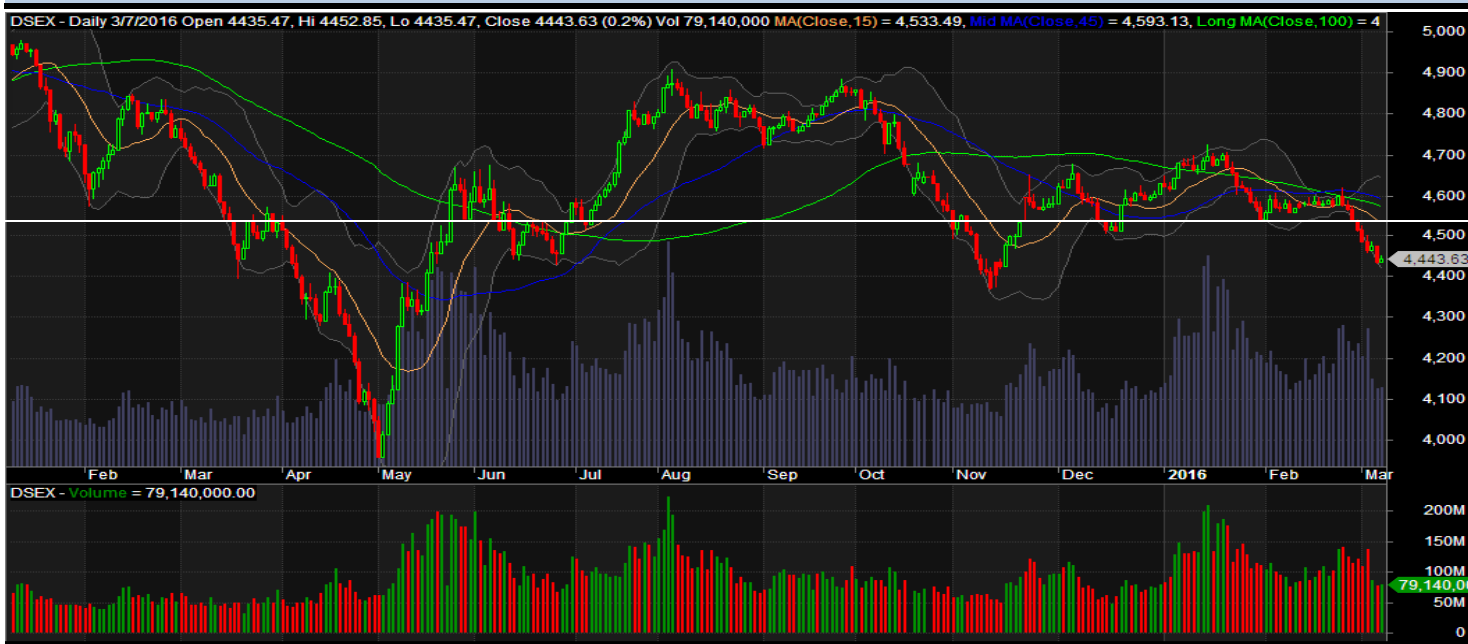
Application/letter may be submitted to the Board of Investment informing them about cessation of production of the registered Units of the Company. Letters may be submitted accordingly to the Chief Controller/Controller of Import and Exports, National Board of Revenue, concerned departments of Income TAX and VAT, City Corporation or any other Local Authority (as applicable), Chief Inspector of Factories & Establishment, Fire Service Department etc. for cancellation of/making necessary correction in IRC, ERC, E-TIN, VAT Registration, Trade License, Factory License, Factory Registration, Fire Protection License, Environment License etc. of those units, as appear applicable."

## Recent Dividend Declaration

Ticker	Dividend	Record Date
IDLC Finance Limited	25% C	13.03.16
Industrial Promotion & Development Co. of Bangladesh Ltd.	20% B	08.03.16
Lanka Bangla Finance Limited	15% C & 15% B	14.03.16
Dutch Bangla Bank Limited	40% C	15.03.16
Phoenix Finance and Investments Ltd.	20% C	31.03.16
Summit Alliance Port Ltd.	10% B	21.03.16

Note: C= cash Dividend, B= Bonus Dividend, R=Right, N/A=NotApplicable

## DSEX Technical Graph for last one year



### MTB CAPITAL LIMITED

Corporate head office

Level: 3, MTB Tower, 111, Kazi Nazrul Islam Avenue, Dhaka

Phone: 8321714, Fax: 8321543

[www.mtbcap.com](http://www.mtbcap.com)

*A Mutual Trust Bank Company*

*you can invest with us*

## Disclaimer

This report has been prepared by the MTB Capital Limited (MTBCL) on the basis of available information in the market and it is provided for the purposes only. It is not to be used as an offer for buying or selling any instruments. If anyone takes any action relying on this information, shall be responsible solely by him/her self for any consequences. The best care has been taken to make the report informative. MTBCL doesn't give any warrant or guarantee that the report or such information is fully accurate. The information that are provided here is the exclusive property of MTBCL and can not be distributed without prior consent of MTBCL.