

Today's Market Overview



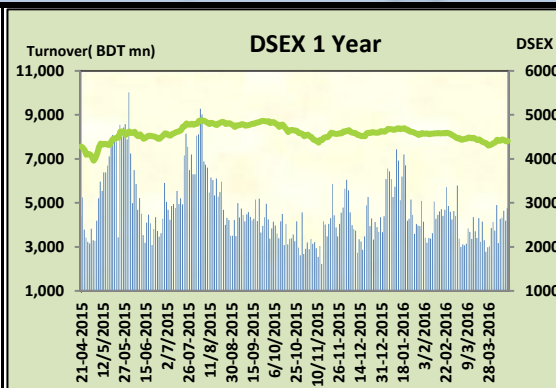
Tuesday, April 12, 2016

DSEX	4,407.52	0.13%	Issues Traded	↑ Advanced 126	↓ Declined 133	↔ Unchanged 58
Turnover (BDT mn)	4,749.66	13.48%				

Market broke out the losing spell after two days with a heavily improved turnover. The premier bourse of the nation opened with very enthusiasm and gained almost 20 points. Market continued the same momentum till the last hour but sellers became aggressive in last hour but couldn't plunge it into red zone as buoyancy along with participation remained active. Improvement in turnover actually eased the tension of the investors as market continued the turnover above 4 billion for the last five days and crossed 4.7 billion today though big paid up stocks performed marginally. Some of the small cap stocks gained most. Power and Engineering got the notable concentration while Bank & NBF were in offloading mood. Other two indices DS30 & DSES the shariah based index both performed positively. Paper was the best gainer followed by Jute & Engineering while IT was the worst loser followed by Ceramics & Bank.

The general gauge DSEX ended at 4407.52 with an advance of 0.1% which added 5.74 points to the broad DSEX. The Turnover advanced by 13.5% which was 564 Million BDT healthier than that of previous day and finally finished the mark at 4749.66 million BDT. A total of 126 issues advanced with 133 declined and 58 remained unchanged. Sectors that improved were: Cement (+0.5%) Engineering (+0.8%) Food (+0.2%) Pharmaceuticals (+0.3%) Power (+0.6%) Textiles (+0.3%) Paper (+1.6%) Jute (+1.1%) Insurance (+0.2%) & Sectors that declined were: Bank (-0.5%) Ceramics (-0.7%) IT (-2.1%) NBF (-0.6%) Service (-0.7%) Telecom (-0.1%).

DOREENPWR topped in the Volume chart with a turnover of 15.37 BDT crore. BDWELDING ranked top in gainer chart with a price hike of +10.0 % and GLOBALINS topped in the loser chart with a decline of -11.1% from its prevailing price. OLYMPIC led the way in the index mover chart while PRIMEBANK played the shatter part.



Index Scenario				Market Highlights				
INDEX	Change	% Changes		DSEX 52 week H/L	4992/3960	Market P/E (LTM)	13.79	
DSEX	4407.52	5.74	0.1%	DSEX Week H/L	4443/4401	M.Cap	3081396.9	
DSES	1067.26	2.66	0.2%	Group Performances				
DS30	1678.88	4.94	0.3%	Category	Mkt Cap (mn.)	Δ % M.Cap	Turnover BDT (mn)	Δ % Turnover
Turnover Scenario				Group A	2,356,305.97	0.1%	2,957.27	6.3%
Today's Turnover (mn.)	Change In BDT (mn.)	% Change		Group B	11,774.47	1.8%	84.29	16.1%
4749.66	564	13.5%		Group N	44,195.38	-1.5%	499.51	5.5%
				Group Z	40,642.83	2.7%	162.37	-26.0%

Top Ten Volume (in BDT. crore)										
Stock	TT	YT	AT	% Δ in Turnover	TT/AT	CP	YP	% Δ P	Number of shares	Public Holding
DOREENPWR	15.37	14.72	29.09	4.4%	-47.2%	71	75.9	-6.5%	80,000,000.0	23%
AMANFEED	15.14	12.19	11.36	24.2%	33.2%	84	81.2	3.4%	80,000,000.0	23%
LANKABAFIN	14.13	20.53	11.35	-31.2%	24.5%	36.3	36.4	-0.3%	276,739,950.1	61%
KEYACOSMET	12.62	17.71	13.54	-28.7%	-6.7%	14.5	13.2	9.8%	707,702,444.0	66%
BSRMLTD	12.53	11.15	12.45	12.4%	0.7%	189.9	186.4	1.9%	190,686,141.8	9%
IBNSINA	11.67	9.71	6.70	20.1%	74.1%	200.4	206.1	-2.8%	22,453,200.0	46%
MPETROLEUM	10.72	3.06	1.56	249.9%	586.7%	169.8	157.8	7.6%	108,216,108.0	17%
BARKAPOWER	10.64	3.03	3.40	251.5%	212.6%	33.1	32.2	2.8%	168,745,777.2	73%
POWERGRID	8.23	10.10	5.92	-18.5%	38.9%	62	63.7	-2.7%	460,912,991.0	5%
JAMUNAOIL	8.17	3.13	1.57	161.0%	421.0%	177.2	170.4	4.0%	110,424,600.0	20%

TT= Today's Turnover in crore, YT= Yesterday's Turnover in Crore, AT= Average of Last 20 day's Turnover, CP= Current Price, YP= Yesterday's Price, % Δ P= percentage change in price

 **Top Ten Gainer**

Top Ten Loser 

Stock	CP	YP	AP	% Δ P	% Δ in P from AP	Stock	CP	YP	AP	% Δ P	% Δ in P from AP
BDWELDING	15.4	14	16.22	10.0%	-5.1%	GLOBALINS	11.30	12.70	12.90	-11.0%	-12.4%
ECABLES	131.1	119.2	107.925	10.0%	21.5%	UNIONCAP	12.20	13.50	13.91	-9.6%	-12.3%
KEYACOSMET	14.5	13.2	14.695	9.8%	-1.3%	PRIMEBANK	14.30	15.50	15.92	-7.7%	-10.2%
ARAMIT	456.4	420	414.045	8.7%	10.2%	DOREENPWR	71.00	75.90	NM	-6.5%	NM
MPETROLEUM	169.8	157.8	143.755	7.6%	18.1%	ORIONINFU	66.30	70.20	69.25	-5.6%	-4.3%
AL-HAJTEX	93.9	88.1	89.59	6.6%	4.8%	AGRANINS	13.80	14.50	15.14	-4.8%	-8.9%
AIBLISTMF	7.3	6.9	6.985	5.8%	4.5%	NHFIL	30.30	31.80	33.29	-4.7%	-9.0%
RUPALILIFE	41.3	39.1	38.34	5.6%	7.7%	EBLISTMF	4.40	4.60	4.43	-4.3%	-0.7%
ISNLTD	14.2	13.6	14.81	4.4%	-4.1%	KAY&QUE	17.90	18.70	18.40	-4.3%	-2.7%
DSHGARME	240.7	230.6	196.93	4.4%	22.2%	PLFSL	10.00	10.40	11.56	-3.8%	-13.5%

AP= Average Price of last 20 day,% Δ in P from AP= percentage change in price from the 20-day average price

Industry /Sectors overview (Amounts in BDT. Crore)

Sector	Trade Volume		MKT Turnover %		% Δ in Turnover	Market Capitalization		% of Total MC		% Δ in MC
	Today	Yesterday	Today	Yesterday		Today	Yesterday	Today	Yesterday	
Bank	18.34	25.74	0.05	0.07	-28.8%	38022.81	38232.31	15.54%	15.64%	-0.5%
Cement	8.92	6.99	0.02	0.02	27.5%	13626.66	13565.61	5.57%	5.55%	0.5%
Ceramics	4.63	3.38	0.01	0.01	37.1%	2587.44	2604.70	1.06%	1.07%	-0.7%
Engineering	53.91	49.10	0.15	0.14	9.8%	15818.81	15688.36	6.47%	6.42%	0.8%
Food & Allied Product	16.02	16.09	0.04	0.05	-0.5%	23171.15	23115.51	9.47%	9.46%	0.2%
Insurance	10.18	7.20	0.03	0.02	41.4%	7245.77	7228.46	2.96%	2.96%	0.2%
IT	6.32	6.02	0.02	0.02	5.0%	975.15	996.28	0.40%	0.41%	-2.1%
Jute	0.79	0.61	0.00	0.00	29.9%	85.61	84.68	0.03%	0.03%	1.1%
Miscellaneous	31.15	26.07	0.09	0.08	19.5%	8388.61	8352.08	3.43%	3.42%	0.4%
Mutual Fund	1.87	1.36	0.01	0.00	37.9%	3639.19	3642.71	1.49%	1.49%	-0.1%
NBFI	25.45	33.90	0.07	0.10	-24.9%	8069.44	8119.51	3.30%	3.32%	-0.6%
Paper & Printing	0.47	0.30	0.00	0.00	55.9%	170.08	167.39	0.07%	0.07%	1.6%
Pharmaceuticals & Chemicals	62.99	66.88	0.17	0.19	-5.8%	41422.82	41316.05	16.93%	16.91%	0.3%
Power & Energy	87.12	64.94	0.24	0.19	34.1%	34680.94	34471.92	14.17%	14.11%	0.6%
Service & Real Estate	6.50	5.86	0.02	0.02	10.9%	1736.46	1748.02	0.71%	0.72%	-0.7%
Tannery	1.54	1.37	0.00	0.00	12.4%	2158.36	2170.53	0.88%	0.89%	-0.6%
Telecommunication	2.43	2.70	0.01	0.01	-10.2%	33279.77	33306.78	13.60%	13.63%	-0.1%
Textile	23.08	26.16	0.06	0.08	-11.8%	7664.23	7640.86	3.13%	3.13%	0.3%
Travel & Leisure	1.74	2.79	0.00	0.01	-37.8%	1925.01	1930.90	0.79%	0.79%	-0.3%

MC= Market Capitalization, % Δ in Turnover= change in turnover from last day, % Δ in MC= change in Market cap from last day

Index Movers	Index Shakers	Sector wise P/E (Fd.)			
OLYMPIC	PRIMEBANK	Bank	7.74	NBFI	38.02
MPETROLEUM	ISLAMIBANK	Cement	28.69	Paper & Printing	91.82
JAMUNAOIL	BATBC	Ceramics	33.88	Pharmaceuticals & Chemicals	26.56
PADMAOIL	POWERGRID	Engineering	70.83	Power & Energy	16.09
BSRMSTEEL	DOREENPWR	Food & Allied Product	29.85	Service & Real Estate	31.26
BSRMLTD	MARICO	Insurance	13.51	Tannery	33.89
DUTCHBANGL	TRUSTBANK	IT	103.43	Telecommunication	26.01
HEIDELBCEM	GP	Jute	157.41	Textile	16.99
UPGDCL	MERCANBANK	Miscellaneous	34.13	Travel & Leisure	19.97
ECABLES	BRACBANK				

Important News

Company News:

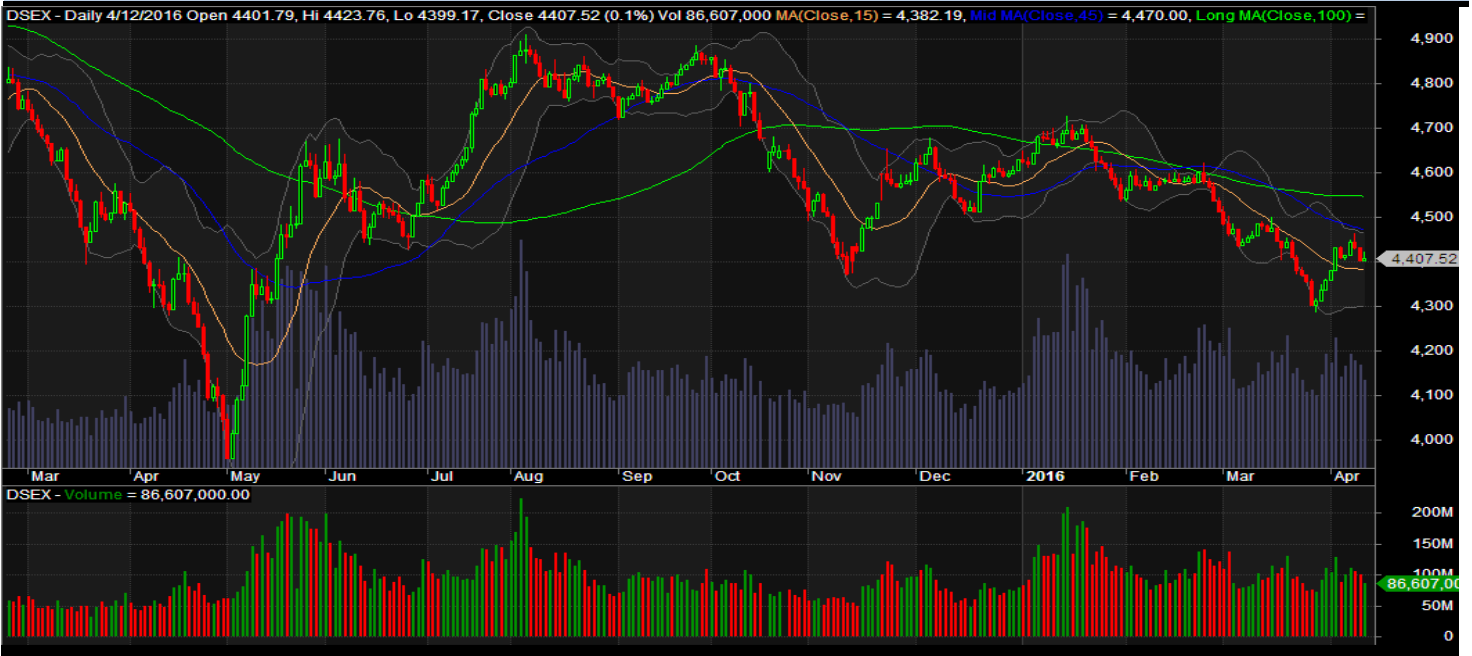
SOUTHEASTB: Issuance of Non-Convertible Subordinated Bond: The Company has informed that the Board of Directors of the Company has taken the following decision: "Resolved that the proposal to issue Southeast Bank 7 Year Non-Convertible Subordinated Bond with an issue price of Tk. 500.00 crore to raise Tier-II Capital of the Bank be and is hereby approved. The Bank shall also take approval of Bangladesh Securities and Exchange Commission and Bangladesh Bank for issuance of this Bond. The Board also decided that any changes requiring in the feature of the Bond's tenor, issue size or whatsoever as deemed necessary by any regulatory advice or otherwise shall be decided by the Board of Directors of the Bank.

Recent Dividend Declaration

Ticker	Dividend	Record Date
Lafarge Surma Cement Limited	5% C (Final)	13.04.16
Nitol Insurance Company Ltd.	12%B	25.04.2016
Apex Footwear Limited	50% C	19.04.2016
Mercantile Bank Ltd.	12% C	26.04.2016
GSP Finance Company (Bangladesh) Ltd.	15.5% C	26.04.2016
Eastern Bank Ltd.	20% C & 15% B	25.04.2016

Note: C= cash Dividend, B= Bonus Dividend, R=Right, N/A=NotApplicable

DSEX Technical Graph for last year



MTB CAPITAL LIMITED

Corporate head office

Level: 3, MTB Tower, 111, Kazi Nazrul Islam Avenue, Dhaka

Phone: 8321714, Fax: 8321543

www.mtbcap.com

A Mutual Trust Bank Company

you can invest with us

Disclaimer

This report has been prepared by the MTB Capital Limited (MTBCL) on the basis of available information in the market and it is provided for the purposes only. It is not to be used as an offer for buying or selling any instruments. If anyone takes any action relying on this information, shall be responsible solely by him/her self for any consequences. The best care has been taken to make the report informative. MTBCL doesn't give any warrant or guarantee that the report or such information is fully accurate. The information that are provided here is the exclusive property of MTBCL and can not be distributed without prior consent of MTBCL.