

Today's Market Overview

Wednesday, August 19, 2015

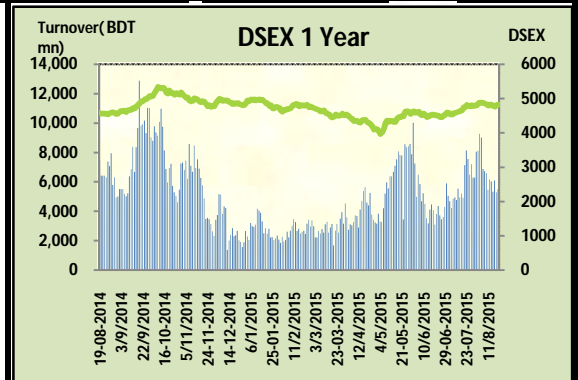


DSEX	4,816.98	0.16%	Issues Traded	Advanced	Declined	Unchanged
Turnover (BDT mn)	5,501.96	4.1%		155	116	48

Late hour buy pressure helped DSEX to stay above 4800 mark. Market remained in positive zone for consecutive two days with a slightly improved turnover. The premier bourse of the nation opened with a positive mood but soon after the first hour investors went for picking marginal profit, amid the sale pressure market forced to slipped in red zone again in last hour investors intensified their buying binge in some big cap stocks like NBFIL, Service & miscellaneous, thus pushed back the market to close in green zone. It seemed investors tried to follow the vigilant posture in the early session and put money in late hour. Other two indices DS30 & DSES the shariah based index somehow managed to put a marginal gain. Most of the major & prominent sectors were negative. Bank was the worst loser followed by Telecom & cement.

The general gauge DSEX ended at 4816 with an advance of +0.2% which added 7.71 points to the broad DSEX. The Turnover improved slightly by +4.1% which was 216 Million BDT healthier than that of previous day and finally finished the mark at 5501.96 million BDT. A total of 155 issues advanced with 116 declined and 48 remained unchanged. Sectors that improved were: NBFIL (+1.2%) Pharmaceuticals (+0.3%) Textile (+0.6%) Miscellaneous (+0.6%) Insurance (+0.7%) Ceramics (+0.6%) & sectors that declined were: Bank (-0.7%) Cement (-0.3%) Engineering (-0.1%) Power (-0.2%) Telecom (-0.3%) Travel (-0.1%)

SQURPHARMA topped in the Volume chart with a turnover of 24.46 BDT crore. APEXSPINN ranked top gainer chart with a price hike of +9.9% and EASTRNLUB topped in the loser chart with a decline of -6.9% from its prevailing price. SQURPHARMA led the way in the index mover chart while BATBC played the shatter part.



Index Scenario

	INDEX	Change	% Changes
DSEX	4816.98	7.71	0.2%
DSES	1188.30	3.98	0.3%
DS30	1849.36	7.50	0.4%

Market Highlights

DSEX 52 week H/L	5334/3960	Market P/E (LTM)	16.01
DSEX Week H/L	4822/4768	M.Cap (mn)	3364724.4
Group Performances			
Category	Mkt Cap (mn.)	Δ % M.Cap	Turnover BDT (mn)
Group A	2,638,036.44	-0.1%	5,060.20
Group B	13,880.01	0.6%	123.70
Group N	26,575.83	-0.7%	228.26
Group Z	24,782.70	-0.1%	44.35

Turnover Scenario

Today's Turnover (mn.)	Change In BDT (mn.)	% Change
5501.96	216	4.1%

Top Ten Volume (in BDT. crore)

Stock	TT	YT	AT	% Δ in Turnover	TT/AT	CP	YP	% Δ P	Number of shares	Public Holding
SQURPHARMA	24.46	16.62	21.04	47.2%	16.3%	242.6	238.9	1.5%	623,586,546.0	9%
APEXTANRY	18.32	15.53	4.16	17.9%	340.6%	164.9	163.4	0.9%	15,240,000	37%
UPGDCL	15.64	12.76	25.50	22.5%	-38.7%	157.7	159.5	-1.1%	362,944,698.60	5%
ISLAMIBANK	14.79	20.27	16.65	-27.0%	-11.2%	30.7	30.8	-0.3%	1,609,990,668.00	21%
RSRMSTEEL	13.58	11.67	11.48	16.4%	18.2%	68.3	67.7	0.9%	65,520,000.00	41%
FARCHEM	12.41	11.81	14.31	5.1%	-13.2%	56.6	57.2	-1.0%	109,237,878.00	12%
FAMILYTEX	12.04	20.06	8.91	-40.0%	35.1%	14.2	14.4	-1.4%	305,937,060.00	55%
CNATEX	11.62	1.82	3.52	538.0%	230.5%	20.3	19.5	4.1%	194,250,000.00	23%
CENTRALPHL	11.04	8.49	5.06	30.0%	118.2%	31.6	30.8	2.6%	81,995,000.00	20%
LAFSURCEML	10.87	12.81	26.01	-15.2%	-58.2%	117.9	117.8	0.1%	1,161,373,500.00	30%

TT= Today's Turnover in crore, YT= Yesterday's Turnover in Crore, AT= Average of Last 20 day's Turnover, CP= Current Price, YP= Yesterday's Price, % Δ P= percentage change in price

Top Ten Gainer						Top Ten Loser					
Stock	CP	YP	AP	% Δ P	% Δ in P from AP	Stock	CP	YP	AP	% Δ P	% Δ in P from AP
APEXSPINN	90	81.9	75.165	9.9%	19.7%	EASTRN LUB	372.30	399.90	376.77	-6.9%	-1.2%
MONNOCERA	42.3	38.5	33.84	9.9%	25.0%	SUNLIFEINS	28.40	30.10	30.88	-5.6%	-8.0%
BDAUTOCA	27.2	24.8	23.61	9.7%	15.2%	PURABIGEN	15.50	16.40	14.46	-5.5%	7.2%
IBNSINA	132.1	120.6	111.71	9.5%	18.3%	AL-HAJTEX	126.10	132.50	118.62	-4.8%	6.3%
NPOLYMAR	113.1	104.8	104.945	7.9%	7.8%	PREMIERLEA	8.80	9.20	9.04	-4.3%	-2.7%
NFML	25.2	23.4	24.285	7.7%	3.8%	AIBL1STIMF	4.70	4.90	5.06	-4.1%	-7.1%
QSM DRYCELL	73.1	68.1	63.73	7.3%	14.7%	MEGH NAPET	5.40	5.60	5.80	-3.6%	-6.9%
RAHIMTEXT	298.2	278.9	269.47	6.9%	10.7%	SANDHANINS	41.20	42.60	50.53	-3.3%	-18.5%
MIRACLEIND	17	15.9	15.74	6.9%	8.0%	PIONEERINS	34.20	35.30	34.44	-3.1%	-0.7%
STANCERAM	46.4	43.5	43.925	6.7%	5.6%	GLAXOSMITH	2,105.00	2,171.50	2,154.59	-3.1%	-2.3%

AP= Average Price of last 20 day,% Δ in P from AP= percentage change in price from the 20-day average price

Industry /Sectors overview (Amounts in BDT. Crore)											
Sector	Trade Volume		MKT Turnover %		% Δ in Turnover	Market Capitalization		% of Total MC		% Δ in MC	
	Today	Yesterday	Today	Yesterday		Today	Yesterday	Today	Yesterday		
Bank	47.13	63.19	0.09	0.12	-25.4%	40251.49	40521.64	14.92%	15.00%	-0.7%	
Cement	14.53	16.43	0.03	0.03	-11.5%	19862.57	19919.79	7.36%	7.37%	-0.3%	
Ceramics	5.02	4.27	0.01	0.01	17.6%	2850.89	2832.79	1.06%	1.05%	0.6%	
Engineering	105.71	87.29	0.20	0.17	21.1%	15235.07	15250.18	5.65%	5.64%	-0.1%	
Food & Allied Product	21.97	27.15	0.04	0.05	-19.1%	23910.42	24027.74	8.86%	8.89%	-0.5%	
Insurance	9.02	7.46	0.02	0.01	20.9%	7269.00	7216.02	2.69%	2.67%	0.7%	
IT	3.34	3.14	0.01	0.01	6.5%	548.48	547.22	0.20%	0.20%	0.2%	
Jute	1.27	1.49	0.00	0.00	-14.6%	108.55	109.18	0.04%	0.04%	-0.6%	
Miscellaneous	22.89	16.04	0.04	0.03	42.6%	8179.46	8133.14	3.03%	3.01%	0.6%	
Mutual Fund	8.28	9.80	0.02	0.02	-15.5%	3311.26	3308.83	1.23%	1.22%	0.1%	
NBFI	24.63	20.88	0.05	0.04	18.0%	8053.36	7959.48	2.98%	2.95%	1.2%	
Paper & Printing	1.27	1.33	0.00	0.00	-4.6%	230.02	230.43	0.09%	0.09%	-0.2%	
Pharmaceuticals & Chemicals	91.58	80.43	0.17	0.15	13.9%	40423.28	40311.90	14.98%	14.92%	0.3%	
Power & Energy	60.96	71.65	0.11	0.14	-14.9%	39261.68	39400.82	14.55%	14.58%	-0.4%	
Service & Real Estate	12.90	7.32	0.02	0.01	76.1%	1987.20	1969.66	0.74%	0.73%	0.9%	
Tannery	23.40	18.96	0.04	0.04	23.4%	2533.47	2533.00	0.94%	0.94%	0.0%	
Telecommunication	7.22	15.11	0.01	0.03	-52.2%	44520.80	44676.82	16.50%	16.54%	-0.3%	
Textile	67.45	60.79	0.13	0.12	11.0%	8872.84	8818.44	3.29%	3.26%	0.6%	
Travel & Leisure	7.77	8.42	0.01	0.02	-7.6%	2412.64	2414.09	0.89%	0.89%	-0.1%	

MC= Market Capitalization, % Δ in Turnover= change in turnover from last day, % Δ in MC= change in Market cap from last day

Index Movers	Index Shakers	Sector wise P/E			
SQRPHARMA	BATBC	Bank	8.75	NBFI	31.77
BXPHARMA	GP	Cement	42.24	Paper & Printing	67.38
BEXIMCO	RENATA	Ceramics	38.87	Pharmaceuticals & Chemicals	26.13
PUBALIBANK	GLAXOSMITH	Engineering	37.82	Power & Energy	16.73
IDLC	UPGDCL	Food & Allied Product	35.96	Service & Real Estate	42.18
TITASGAS	PRIMEBANK	Insurance	14.50	Tannery	33.18
OLYMPIC	HEIDELCEM	IT	17.53	Telecommunication	28.68
DELTALIFE	POWERGRID	Jute	183.86	Textile	17.88
SIBL	BSRMSTEEL	Miscellaneous	37.23	Travel & Leisure	15.63
ICB	BERGERPBL				

Important News

Company News:

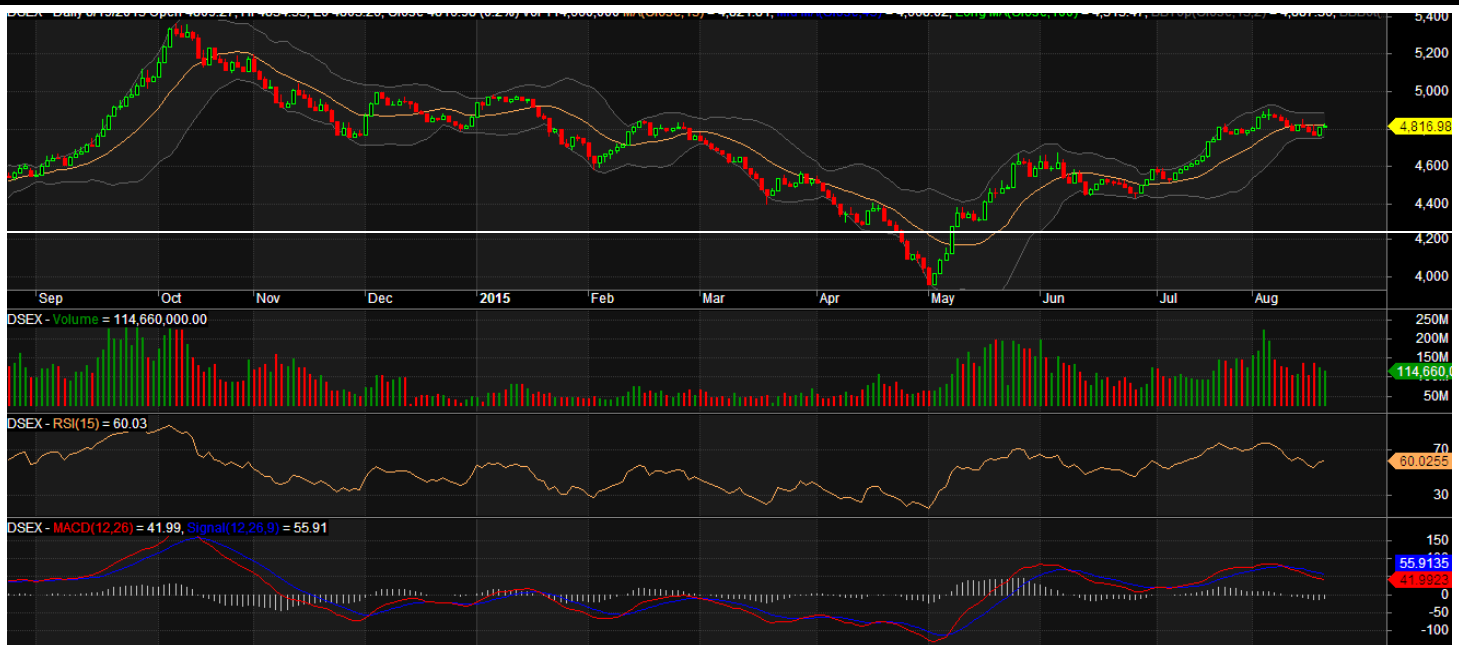
FAMILYTEX: Q2 Financials:(Q2 Un-audited): EPS for April-June, 2015 was Tk. 0.42 as against Tk. 1.02 for April-June, 2014, EPS for Jan-June, 2015 was Tk. 1.22 as against Tk. 2.17 for Jan-June, 2014. NOCFPS was Tk. 0.73 for Jan-June, 2015 as against Tk. 0.28 for Jan-June, 2014. NAV per share was Tk. 15.44 as of June 30, 2015 and Tk. 14.14 as of December 31, 2014.

Recent Dividend Declaration

Ticker	Dividend	Record Date
National Bank Limited	10% B	30.08.15
Merger Paints Bangladesh Limite	100% C (Interim)	20.08.15
Shasha Denim Limited	10% C (Interim)	20.08.15

Note: C= cash Dividend, B= Bonus Dividend, R=Right, N/A=NotApplicable

DSEX Technical Graph for last one year



MTB CAPITAL LIMITED

Corporate head office

Level: 3, MTB Tower, 111, Kazi Nazrul Islam Avenue, Dhaka

Phone: 8321714, Fax: 8321543

www.mtbcap.com

A mutual Trust Bank Company

you can invest with US

Disclaimer

This report has been prepared by the MTB Capital Limited (MTBCL) on the basis of available information in the market and it is provided for the purposes only. It is not to be used as an offer for buying or selling any instruments. If anyone takes any action relying on this information, shall be responsible solely by him/her self for any consequences. The best care has been taken to make the report informative. MTBCL doesn't give any warrant or guarantee that the report or such information is fully accurate. The information that are provided here is the exclusive property of MTBCL and can not be distributed without prior consent of MTBCL.