

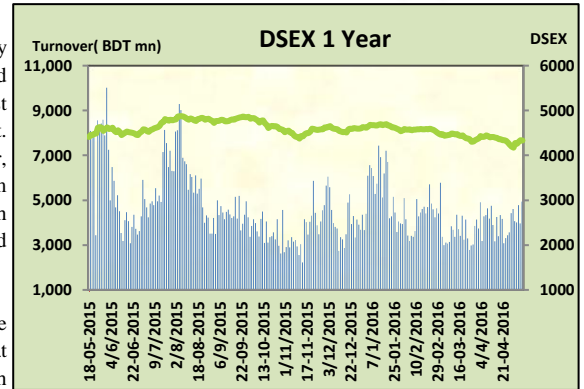
# Today's Market Overview



Monday, May 09, 2016

<b>DSEX</b>	4,329.40	<b>-0.25%</b>	<b>Issues Traded</b>	<b>Advanced</b>	<b>Declined</b>	<b>Unchanged</b>
<b>Turnover (BDT mn)</b>	4,939.65	<b>24.37%</b>		87	178	52

Market observed fall after yesterday's gain with a heavily improved turnover. Turnover was the only indicator relaxed investors for today. The premier bourse of the nation opened with negative mood and continued the same mood till the closure, recovery stance was there during the first hour but couldn't last for long. Throughout the session investors were active in trading thus kept the turnover level vibrant. Most of the major sectors performed mixed, notable concentration occurred in Engineering, Power, Pharmaceuticals & Telecom. Among the major sectors Bank & Cement got some severity while Telecom & Engineering attracted the investors. Other two indices DS30 & DSES the shariah based index both performed poor. Most of the Small cap stocks were in offloading mood. IT was the worst loser followed Service & Bank. Telecom was the best gainer followed by Insurance & Engineering.



The general gauge DSEX ended at 4329.40 with a decline of -0.25% which cut 10.67 points from the broad DSEX. The Turnover advanced heavily by 24.37% which was 968 Million BDT healthier than that of previous day and finally finished the mark at 4939.65 million BDT. A total of 87 issues advanced with 178 declined and 52 remained unchanged. Sectors that improved were: Engineering (+0.9%) Food (+0.5%) Insurance (+1.1%) NBF (0.3%) Telecom (+1.4%) Paper (+1.2%) Sectors that declined were: Bank (-0.8%) cement (-0.6%) IT (-1.5%) Pharmaceuticals (-0.2%) Power (-0.4%) Service (-1.0%) Textiles (-0.5%)

BSRMSTEEL topped in the Volume chart with a turnover of 47.65 BDT crore. KAY&QUE ranked top in gainer chart with a price hike of +10.0% and EASTLAND topped in the loser chart with a decline of -12.9% from its prevailing price. GP led the way in the index mover chart while ISLAMIBANK played the shatter part.



## Index Scenario Market Highlights

INDEX	Change	% Changes	DSEX 52 week H/L	4874/3960	Market P/E (LTM)	12.96		
DSEX	4329.40	(10.67)	-0.25%	DSEX Week H/L	4282/4171	M.Cap	3055786.5	
DSES	1064.00	(5.43)	-0.51%	<b>Group Performances</b>				
DS30	1679.09	(3.52)	-0.21%	Category	Mkt Cap (mn.)	Δ % M.Cap	Turnover BDT (mn)	Δ % Turnover

Turnover Scenario		
Today's Turnover (mn.)	Change In BDT (mn.)	% Change
4939.65	968	24.4%

## Top Ten Volume (in BDT. crore)

Stock	TT	YT	AT	% Δ in Turnover	TT/AT	CP	YP	% Δ P	Number of shares	Public Holding
BSRMSTEEL	47.65	10.49	7.59	354.5%	527.8%	104.2	97.2	7.2%	341,775,000.0	13%
UPGDCL	44.83	26.02	14.89	72.3%	201.0%	174.9	171.1	2.2%	362,944,698.6	5%
BSRMLTD	39.79	27.48	17.10	44.8%	132.7%	142.6	147	-3.0%	190,686,141.8	9%
MJLBD	32.52	37.67	17.83	-13.7%	82.4%	111.2	113.1	-1.7%	274,244,180.0	9%
SQURPHARMA	18.56	6.73	7.52	175.9%	146.9%	263.8	261.3	1.0%	623,586,546.0	9%
SPCL	13.33	3.43	2.49	288.8%	435.7%	112.7	106.7	5.6%	137,132,037.0	19%
BSC	11.03	1.44	1.26	667.4%	778.7%	373.6	345.3	8.2%	13,619,200.0	48%
BXPBARMA	10.47	13.27	6.93	-21.1%	51.1%	84	87.2	-3.7%	386,244,234.6	50%
ISLAMIBANK	8.25	14.19	3.62	-41.9%	127.9%	26.1	27.7	-5.8%	1,609,990,668.0	21%
LINDEBD	7.31	15.79	4.96	-53.7%	47.3%	1394.4	1434.4	-2.8%	15,218,280.0	19%

TT= Today's Turnover in crore, YT= Yesterday's Turnover in Crore, AT= Average of Last 20 day's Turnover, CP= Current Price, YP= Yesterday's Price, % Δ P= percentage change in price

**Top Ten Gainer****Top Ten Loser**

Stock	CP	YP	AP	% Δ P	% Δ in P from AP	Stock	CP	YP	AP	% Δ P	% Δ in P from AP
KAY&QUE	23.2	21.1	19.545	10.0%	18.7%	EASTLAND	17.60	20.20	20.16	-12.9%	-12.7%
PRIMELIFE	63.1	57.4	56.895	9.9%	10.9%	JAMUNABANK	12.40	13.70	12.84	-9.5%	-3.4%
ISNLTD	12.4	11.3	12.63	9.7%	-1.8%	UNITEDAIR	5.40	5.90	5.17	-8.5%	4.4%
RAHIMAFOD	45.2	41.3	38.92	9.4%	16.1%	VAMLBDMF1	8.50	9.10	NM	-6.6%	NM
BSC	373.6	345.3	319.86	8.2%	16.8%	JANATAINS	9.20	9.80	10.42	-6.1%	-11.7%
BSRMSTEEL	104.2	97.2	93.685	7.2%	11.2%	DULAMIACOI	6.50	6.90	6.89	-5.8%	-5.6%
MONNOSTAF	409.5	385.8	379.635	6.1%	7.9%	ISLAMIBANK	26.10	27.70	24.38	-5.8%	7.1%
CENTRALINS	16	15.1	15.49	6.0%	3.3%	ZEALBANGLA	7.60	8.00	7.05	-5.0%	7.8%
SPCL	112.7	106.7	103.16	5.6%	9.2%	BDAUTOCA	32.90	34.60	29.92	-4.9%	10.0%
EASTRNLAB	1274.4	1207.5	1163.535	5.5%	9.5%	MIDASFIN	17.80	18.70	18.01	-4.8%	-1.1%

AP= Average Price of last 20 day,% Δ in P from AP= percentage change in price from the 20-day average price

**Industry /Sectors overview (Amounts in BDT. Crore)**

Sector	Trade Volume		MKT Turnover %		% Δ in Turnover	Market Capitalization		% of Total MC		% Δ in MC
	Today	Yesterday	Today	Yesterday		Today	Yesterday	Today	Yesterday	
Bank	27.14	31.46	0.06	0.08	-13.7%	36905.09	37204.00	15.16%	15.30%	-0.8%
Cement	14.12	9.24	0.03	0.02	52.8%	12625.26	12704.28	5.19%	5.22%	-0.6%
Ceramics	3.32	2.30	0.01	0.01	44.4%	2384.11	2401.18	0.98%	0.99%	-0.7%
Engineering	118.16	66.05	0.25	0.17	78.9%	14850.56	14713.68	6.10%	6.05%	0.9%
Food & Allied Product	17.28	19.16	0.04	0.05	-9.8%	23954.20	23831.48	9.84%	9.80%	0.5%
Insurance	6.91	5.90	0.01	0.02	17.2%	6835.94	6763.59	2.81%	2.78%	1.1%
IT	3.36	3.98	0.01	0.01	-15.5%	915.59	929.48	0.38%	0.38%	-1.5%
Jute	0.43	0.99	0.00	0.00	-56.5%	78.69	79.64	0.03%	0.03%	-1.2%
Miscellaneous	22.14	12.88	0.05	0.03	71.9%	8214.60	8222.12	3.38%	3.38%	-0.1%
Mutual Fund	1.15	1.17	0.00	0.00	-2.0%	3568.01	3571.02	1.47%	1.47%	-0.1%
NBFI	14.44	21.30	0.03	0.06	-32.2%	7697.28	7674.92	3.16%	3.16%	0.3%
Paper & Printing	0.47	0.41	0.00	0.00	13.9%	147.64	145.93	0.06%	0.06%	1.2%
Pharmaceuticals & Chemicals	56.09	54.67	0.12	0.14	2.6%	40928.86	41020.04	16.82%	16.86%	-0.2%
Power & Energy	131.67	118.21	0.28	0.31	11.4%	35280.82	35419.34	14.50%	14.56%	-0.4%
Service & Real Estate	8.09	7.46	0.02	0.02	8.5%	1720.39	1737.12	0.71%	0.71%	-1.0%
Tannery	2.20	2.42	0.00	0.01	-9.1%	2204.76	2212.32	0.91%	0.91%	-0.3%
Telecommunication	7.16	3.78	0.02	0.01	89.1%	35899.05	35394.49	14.75%	14.55%	1.4%
Textile	21.79	18.41	0.05	0.05	18.3%	7215.96	7255.54	2.96%	2.98%	-0.5%
Travel & Leisure	8.05	6.96	0.02	0.02	15.7%	1960.45	1953.60	0.81%	0.80%	0.4%

MC= Market Capitalization, % Δ in Turnover= change in turnover from last day, % Δ in MC= change in Market cap from last day

Index Movers	Index Shakers	Sector wise P/E (Fd.)			
GP	ISLAMIBANK	Bank	7.21	NBFI	18.04
BSRMSTEEL	LAFSURCEML	Cement	23.55	Paper & Printing	79.52
BATBC	BXPHERMA	Ceramics	32.22	Pharmaceuticals & Chemicals	26.50
SQURPHARMA	BSRMLTD	Engineering	80.56	Power & Energy	16.58
UPGDCL	JAMUNABANK	Food & Allied Product	30.13	Service & Real Estate	28.75
SPCL	LINDEBD	Insurance	12.22	Tannery	32.02
BRACBANK	MJLBD	IT	95.70	Telecommunication	21.69
HEIDELBCEM	OLYMPIC	Jute	420.08	Textile	16.33
DELTALIFE	JAMUNAOIL	Miscellaneous	30.75	Travel & Leisure	17.34
DUTCHBANGL	DESCO				

## Important News

### Company News:

ASIAPACINS: Q1 Financials: (Q1 Un-audited): EPS was Tk. 0.43 for January-March, 2016 as against Tk. 0.58 for January-March, 2015. NOCFPS was Tk. 0.24 for January-March, 2016 as against Tk. 0.31 for January-March, 2015. NAV per share was Tk. 17.85 as of March 31, 2016 and Tk. 17.20 as of December 31, 2015.

BSRMLTD: Q1 Financials: (Q1 Un-audited): EPS was Tk. 2.52 for January-March, 2016 as against Tk. 0.16 for January-March, 2015. NOCFPS was Tk. 12.08 for January-March, 2016 as against Tk. 4.12 for January-March, 2015. NAV per share was Tk. 52.33 as of March 31, 2016 and Tk. 55.28 as of March 31, 2015.

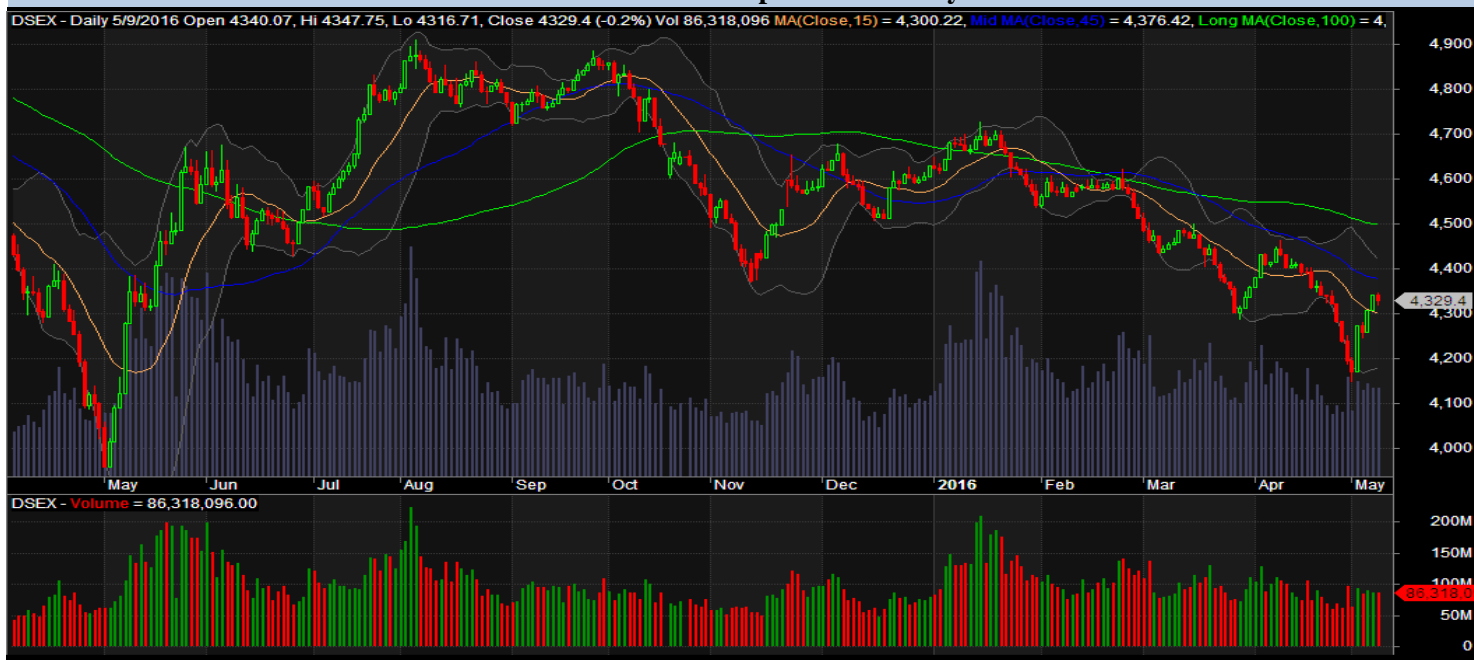
BSRMSTEEL: Q1 Financials: Consolidated EPS was Tk. 2.75 for January-March, 2016 as against Tk. 0.89 for January-March, 2015. Consolidated NOCFPS was Tk. 11.90 for January-March, 2016 as against Tk. 18.78 for January-March, 2015. Consolidated NAV per share was Tk. 29.78 as of March 31, 2016 and Tk. 30.03 as of March 31, 2015.

## Recent Dividend Declaration

Ticker	Dividend	Record Date
Beximco Pharmaceuticals Limited	10% C & 5% B	12.05.2016
Bangladesh Export Import Co. Ltd..	15% B	12.05.2016
Dragon Sweater and Spinning Limited	15% B	12.05.2016
EXIM Bank of Bangladesh Ltd.	12% C	15.05.2016
Brae Bank Limited	25% C	12.05.2016
Islami Bank Limited	20% C	11.05.2016

Note: C= cash Dividend, B= Bonus Dividend, R=Right, N/A=NotApplicable

## DSEX Technical Graph for last one year



## MTB CAPITAL LIMITED

Corporate head office

Level: 3, MTB Tower, 111, Kazi Nazrul Islam Avenue, Dhaka

Phone: 8321714, Fax: 8321543

[www.mtbcap.com](http://www.mtbcap.com)

*A Mutual Trust Bank Company*

*you can invest with us*

## Disclaimer

This report has been prepared by the MTB Capital Limited (MTBCL) on the basis of available information in the market and it is provided for the purposes only. It is not to be used as an offer for buying or selling any instruments. If anyone takes any action relying on this information, shall be responsible solely by him/her self for any

consequences. The best care has been taken to make the report informative. MTBCL doesn't give any warrant or guarantee that the report or such information is fully accurate. The information that are provided here is the exclusive property of MTBCL and can not be distributed without prior consent of MTBCL.

---