

# Today's Market Overview

Tuesday, March 08, 2016

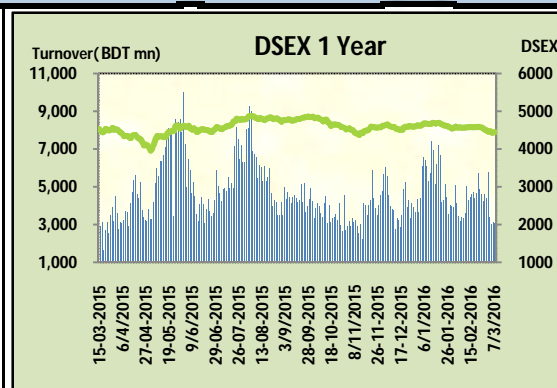


<b>DSEX</b>	4,453.89	0.23%	<b>Issues Traded</b>	↑ <b>Advanced</b> 181	↓ <b>Declined</b> 94	↔ <b>Unchanged</b> 40
<b>Turnover (BDT mn)</b>	3,062.60	-1.51%				

Market continued the gaining streak for the consecutive two days with a decline turnover. The premier bourse of the nation opened with a positive mood and ended with positive mood too but during the midsession market found some sale pressure and became negative but the sale pressure was not very immense to plunge the market in dip red zone. Market portrayed the participation scenario like the previous days as the investors were very reluctant to put money. The active investors were busy in shifting and taking some position as the maximum stocks were in lucrative price range. Sellers were not interested to put pressure as buoyancy was feeble. Almost all the sectors tried to gain something except Telecom. Turnover was very poor and crossed only 3 billion which actually failed to motivate potential investors to join. Small cap stocks observed some positive concentration along with NBFI & Power, participation level shown new funds were not injected and active investors remained busy in interchanging among the stocks. IT was the best gainer followed by Jute & Ceramics.

The general gauge DSEX ended at 4453.89 with an advance of +0.2% which added 10.26 points to the broad DSEX. The Turnover declined slightly by -1.5% which was 47 Million BDT poorer than that of previous day and finally finished the mark at 3062.60 million BDT. A total of 181 issues advanced with 94 declined and 40 remained unchanged. Sectors that improved were: Cement (+0.4%) Ceramics (+2.8%) Engineering (+0.1%) Food (+0.3%) IT (+3.7%) Jute (+1.3%) NBFI (+3.6%) NBFI (+1.1%) Power (+0.4%) Pharmaceuticals (+0.5%) Service (+1.4%) Textiles (+0.3%) & Sectors that declined were: Telecom (-0.6%) Travel (-1.1%) Paper (-0.8%).

LANKABAFIN topped in the Volume chart with a turnover of 19.58 BDT crore. NFML ranked top gainer chart with a price hike of +7.7% and BIFC topped in the loser chart with a decline of -9.6% from its prevailing price. MARICO led the way in the index mover chart while GP played the shatter part.



Index Scenario				Market Highlights				
	INDEX	Change	% Changes	DSEX 52 week H/L	4992/3960	Market P/E (LTM)	14.10	
DSEX	4453.89	10.26	0.2%	DSEX Week H/L	4473/4435	M.Cap (mn)	3092097.0	
DS30	1709.59	6.28	0.4%	<b>Group Performances</b>				
				Category	Mkt Cap (mn.)	Δ % M.Cap	Turnover BDT (mn)	Δ % Turnover
				Group A	2,377,353.83	0.2%	2,672.13	0.8%
				Group B	12,107.77	0.6%	72.76	25.9%
				Group N	34,886.04	1.3%	212.68	18.6%
				Group Z	33,372.79	-0.4%	36.90	-15.2%

Top Ten Volume (in BDT. crore)										
Stock	TT	YT	AT	% Δ in Turnover	TT/AT	CP	YP	% Δ P	Number of shares	Public Holding
LANKABAFIN	19.58	11.66	17.11	67.9%	14.5%	40.7	39.7	2.5%	240,643,434.9	61%
BSRMLTD	16.54	18.60	24.01	-11.0%	-31.1%	178	178.5	-0.3%	173,351,038.0	9%
UPGDCL	12.07	9.59	15.55	25.9%	-22.4%	160.3	160.8	-0.3%	362,944,698.6	5%
CMCKAMAL	10.81	9.82	7.61	10.1%	41.9%	21.7	21.4	1.4%	96,811,412.6	59%
SUMITPOWER	10.71	8.29	6.73	29.1%	59.1%	42.9	42.1	1.9%	714,284,847.2	15%
ORIONPHARM	9.67	16.58	7.25	-41.6%	33.4%	40.3	40.7	-1.0%	234,000,000.0	44%
QSMRDYCELL	8.22	16.42	9.46	-49.9%	-13.0%	101.2	101.9	-0.7%	40,479,436.8	54%
BXPHERMA	6.77	3.85	13.84	75.7%	-51.1%	86	86	0.0%	386,244,234.6	50%
AMANFEED	6.32	3.56	7.75	77.5%	-18.5%	55.1	54.6	0.9%	80,000,000.0	23%
IFADAUTOS	5.68	6.51	11.99	-12.7%	-52.6%	92.9	92	1.0%	149,500,000.0	17%

TT= Today's Turnover in crore, YT= Yesterday's Turnover in Crore, AT= Average of Last 20 day's Turnover, CP= Current Price, YP= Yesterday's Price, % Δ P= percentage change in price

Top Ten Gainer						Top Ten Loser					
Stock	CP	YP	AP	% Δ P	% Δ in P from AP	Stock	CP	YP	AP	% Δ P	% Δ in P from AP
NFML	19.7	18.3	18.785	7.7%	4.9%	BIFC	10.30	11.40	11.19	-9.6%	-7.9%
EASTRN LUB	678.2	630.9	592.47	7.5%	14.5%	KAY&QUE	20.10	21.50	20.56	-6.5%	-2.2%
EXIMISTMF	5.9	5.5	5.88	7.3%	0.3%	EBL	26.70	28.50	29.46	-6.3%	-9.4%
DBH	113.5	106.4	116.73	6.7%	-2.8%	SAMATALETF	23.10	24.50	25.54	-5.7%	-9.5%
JUTESPINN	53	50	53.08	6.0%	-0.2%	BRACSCBOND	1,000.00	1,040.00	1,016.90	-3.8%	-1.7%
AGNISYSL	20.7	19.6	19.815	5.6%	4.5%	ICBEPMF1S1	6.40	6.60	6.38	-3.0%	0.4%
ASIAPACINS	15.4	14.6	15.14	5.5%	1.7%	BAYLEASING	20.10	20.70	20.11	-2.9%	0.0%
ITC	51.1	48.6	52.15	5.1%	-2.0%	METROSPIN	7.90	8.10	8.02	-2.5%	-1.4%
PADMALIFE	31.6	30.1	29.45	5.0%	7.3%	AZIZPIPES	32.50	33.30	34.39	-2.4%	-5.5%
NPOLYMAR	75.1	71.6	74.41	4.9%	0.9%	GREENDELT	45.90	47.00	50.35	-2.3%	-8.8%

AP= Average Price of last 20 day,% Δ in P from AP= percentage change in price from the 20-day average price

Industry /Sectors overview (Amounts in BDT. Crore)											
Sector	Trade Volume		MKT Turnover %		% Δ in Turnover	Market Capitalization		% of Total MC		% Δ in MC	
	Today	Yesterday	Today	Yesterday		Today	Yesterday	Today	Yesterday		
Bank	18.10	19.81	0.06	0.07	-8.6%	38312.31	38297.41	15.62%	15.65%	0.0%	
Cement	9.96	8.07	0.03	0.03	23.4%	14287.38	14229.29	5.82%	5.81%	0.4%	
Ceramics	5.27	2.87	0.02	0.01	83.7%	2674.65	2602.81	1.09%	1.06%	2.8%	
Engineering	54.74	69.58	0.19	0.24	-21.3%	15628.39	15607.75	6.37%	6.38%	0.1%	
Food & Allied Product	11.48	9.45	0.04	0.03	21.5%	23170.34	23103.00	9.44%	9.44%	0.3%	
Insurance	8.25	9.57	0.03	0.03	-13.8%	7391.90	7388.83	3.01%	3.02%	0.0%	
IT	12.10	6.16	0.04	0.02	96.4%	965.80	931.56	0.39%	0.38%	3.7%	
Jute	2.03	1.31	0.01	0.00	55.2%	84.90	81.92	0.03%	0.03%	3.6%	
Miscellaneous	20.37	11.83	0.07	0.04	72.2%	8256.65	8235.65	3.37%	3.36%	0.3%	
Mutual Fund	2.99	1.67	0.01	0.01	78.5%	3653.93	3648.24	1.49%	1.49%	0.2%	
NBFI	30.39	21.70	0.10	0.08	40.1%	8488.00	8398.05	3.46%	3.43%	1.1%	
Paper & Printing	0.39	0.30	0.00	0.00	29.3%	185.72	187.24	0.08%	0.08%	-0.8%	
Pharmaceuticals & Chemicals	34.80	35.75	0.12	0.12	-2.6%	41071.80	40878.54	16.74%	16.70%	0.5%	
Power & Energy	38.99	31.30	0.13	0.11	24.6%	32708.84	32569.46	13.33%	13.31%	0.4%	
Service & Real Estate	2.89	2.84	0.01	0.01	1.6%	1692.05	1668.99	0.69%	0.68%	1.4%	
Tannery	1.44	1.18	0.00	0.00	22.5%	2219.89	2188.05	0.90%	0.89%	1.5%	
Telecommunication	4.54	10.72	0.02	0.04	-57.7%	34706.55	34908.17	14.15%	14.26%	-0.6%	
Textile	32.28	39.95	0.11	0.14	-19.2%	7914.41	7892.50	3.23%	3.22%	0.3%	
Travel & Leisure	3.31	4.01	0.01	0.01	-17.6%	1933.29	1955.45	0.79%	0.80%	-1.1%	

MC= Market Capitalization, % Δ in Turnover= change in turnover from last day, % Δ in MC= change in Market cap from last day

Index Movers	Index Shakers	Sector wise P/E (Fd.)			
MARICO	GP	Bank	8.63	NBFI	41.53
BRACBANK	EBL	Cement	30.59	Paper & Printing	99.11
DBH	BSRMSTEEL	Ceramics	35.49	Pharmaceuticals & Chemicals	27.23
RAK CERAMIC	BSCCL	Engineering	54.11	Power & Energy	15.49
SUMITPOWER	ISLAMIBANK	Food & Allied Product	29.48	Service & Real Estate	29.75
DESCO	NATLIFEINS	Insurance	13.10	Tannery	52.71
LAFSURCEML	UPGDCL	IT	90.27	Telecommunication	26.85
BATASHOE	UNIQUEHRL	Jute	156.47	Textile	17.15
PREMIERCEM	MJLBD	Miscellaneous	35.34	Travel & Leisure	20.53
OLYMPIC	HEIDELBCEM				

**Important News**

**Company News:**

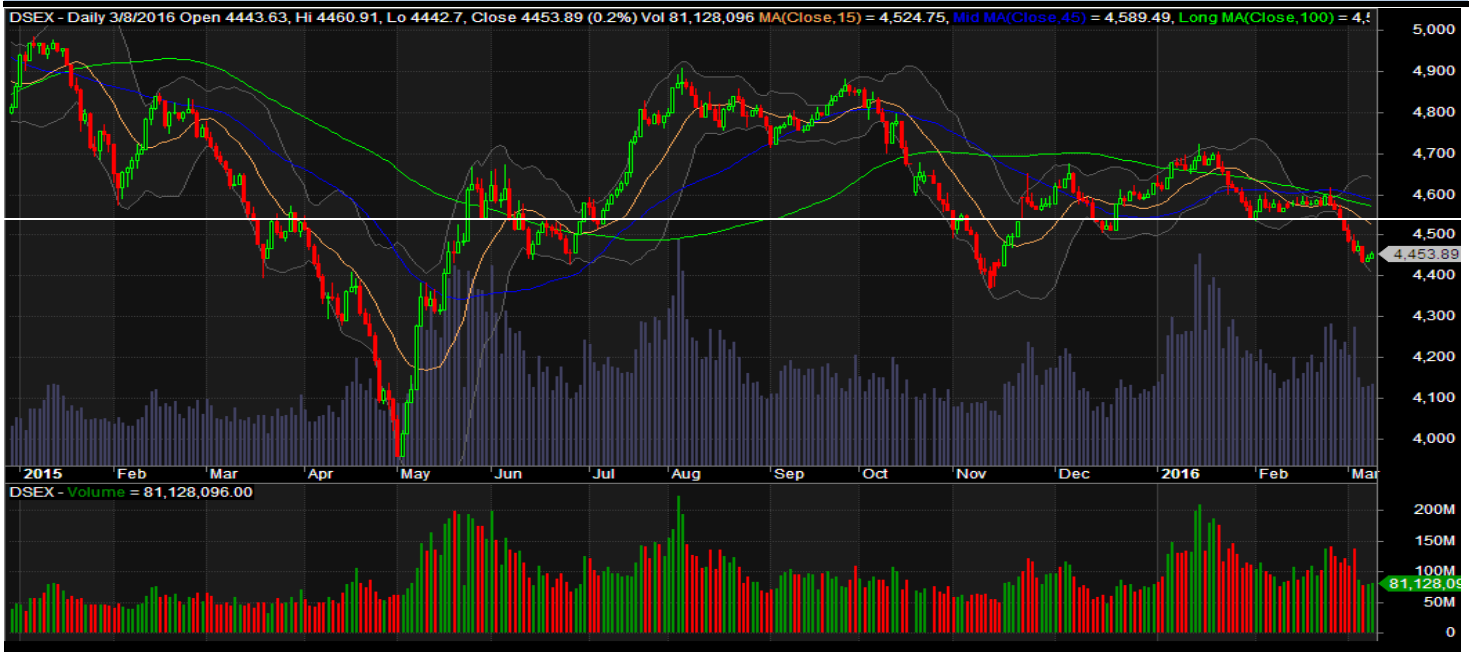
**Recent Dividend Declaration**

**Ticker                      Dividend                      Record Date**

IDLC Finance Limited	25% C	13.03.16
Industrial Promotion & Development Co. of Bangladesh Ltd.	20% B	08.03.16
Lanka Bangla Finance Limited	15% C & 15% B	14.03.16
Dutch Bangla Bank Limited	40% C	15.03.16
Phoenix Finance and Investments Ltd.	20% C	31.03.16
Summit Alliance Port Ltd.	10% B	21.03.16

Note: C= cash Dividend, B= Bonus Dividend, R=Right, N/A=NotApplicable

**DSEX Technical Graph for last year**



**MTB CAPITAL LIMITED**

Corporate head office

Level: 3, MTB Tower, 111, Kazi Nazrul Islam Avenue, Dhaka

Phone: 8321714, Fax: 8321543

[www.mtbcap.com](http://www.mtbcap.com)

*A Mutual Trust Bank Company*

*you can invest with us*

**Disclaimer**

This report has been prepared by the MTB Capital Limited (MTBCL) on the basis of available information in the market and it is provided for the purposes only. It is not to be used as an offer for buying or selling any instruments. If anyone takes any action relying on this information, shall be responsible solely by him/her self for any consequences. The best care has been taken to make the report informative. MTBCL doesn't give any warrant or guarantee that the report or such information is fully accurate. The information that are provided here is the exclusive property of MTBCL and can not be distributed without prior consent of MTBCL.