

Today's Market Overview

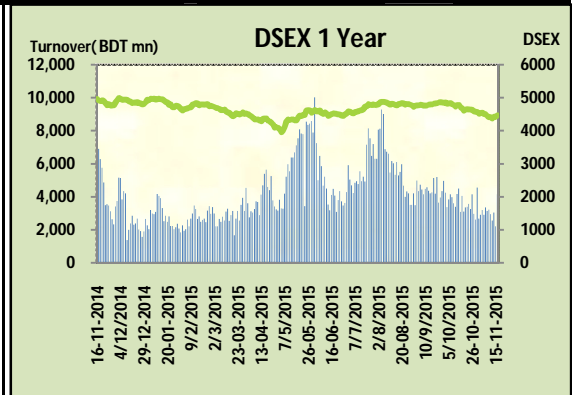
Tuesday, November 17, 2015



DSEX	4,496.36	0.46%	Issues Traded	↑ Advanced 161	↓ Declined 107	↔ Unchanged 38
Turnover (BDT mn)	4,021.99	-3.23%				

Market continued the gaining streak for the consecutive second days with a slightly declined turnover. The premier bourse of the nation opened with a positive mood and continued the same mood till the closure though it tried to tumble in the midsession but investors' matured behavior refrained to do it. Basically yesterday's turnover and some other positive influential news motivated the sideline investors to get in the fence. War criminals' verdict related issue tried to shake the confidence but market covered it up smartly. Big paid up stocks' got the better participation level most of the turnover concentrated in NBFI, Power, Pharmaceuticals, Engineering & service. Ceramics was the best gainer followed by NBFI, IT & Telecom while Food, Power & Miscellaneous failed to cross the red barrier.

The general gauge DSEX ended at 4496.36 with advance of +0.5% which added 20.54 points to the broad DSEX. The Turnover declined by -3.2% which was 134 Million BDT poorer than that of previous day and finally finished the mark at 4021.99 million BDT. A total of 161 issues advanced with 107 declined and 38 remained unchanged. Sectors that improved were: Bank (+0.2%) Ceramics (+3.4%) Engineering (+0.3%) NBFI (+3.3%) Telecom (+1.7%) Service (+0.6%) Textile (+0.4%) & sectors that declined were: Power (-0.2%) Miscellaneous (-1.00%) Food (-0.2%) SAIFPOWER topped in the Volume chart with a turnover of 31.83 BDT crore. APEXTANRY ranked top gainer chart with a price hike of +10% and ZAHEENSPIN topped in the loser chart with a decline of -6.8% from its prevailing price. GP led the way in the index mover chart while BERGERPBL played the shatter part.



Index Scenario				Market Highlights				
INDEX	Change	% Changes		DSEX 52 week H/L	5334/3960	Market P/E (LTM)	14.52	
DSEX	4496.36	20.54	0.5%	DSEX Week H/L	4496/4371	M.Cap (mn)	3105843.5	
DSES	1083.40	5.00	0.5%	Group Performances				
DS30	1707.92	8.56	0.5%	Category	Mkt Cap (mn.)	Δ % M.Cap	Turnover BDT (mn)	Δ % Turnover
Turnover Scenario				Group A	2,402,562.56	0.5%	3,481.30	20.0%
Today's Turnover (mn.)	Change In BDT (mn.)	% Change		Group B	12,921.23	-0.4%	73.69	-31.1%
4021.99	(134)	-3.2%		Group N	27,300.67	-0.9%	352.19	-49.0%
				Group Z	23,763.39	1.5%	36.03	-5.6%

Top Ten Volume (in BDT. crore)										
Stock	TT	YT	AT	% Δ in Turnover	TT/AT	CP	YP	% Δ P	Number of shares	Public Holding
SAIFPOWER	31.83	11.31	7.25	181.6%	339.0%	70.2	69.3	1.3%	70,985,380.0	19%
IFADAUTOS	17.71	49.62	16.01	-64.3%	10.6%	101.2	103.7	-2.4%	115,000,000.0	17%
BXPHERMA	17.58	7.21	7.95	143.7%	121.2%	73.6	72.7	1.2%	386,244,234.6	50%
OLYMPIC	11.15	11.55	3.58	-3.5%	211.8%	306	304	0.7%	158,681,656.8	27%
CVOPRL	10.52	1.79	5.93	486.3%	77.5%	351.2	348.7	0.7%	19,800,000.0	34%
TITASGAS	10.01	10.30	10.34	-2.8%	-3.2%	52.9	53.3	-0.8%	989,221,831.0	25%
SPCL	9.95	7.56	7.32	31.5%	35.9%	134.3	137.5	-2.3%	133,137,900.0	19%
EMERALDOIL	9.64	6.21	4.21	55.2%	129.0%	53.9	54	-0.2%	49,350,000.0	38%
QSMDDRYCELL	9.53	8.24	5.96	15.7%	59.9%	89.9	92.9	-3.2%	36,799,488.0	54%
KDSALTD	8.89	11.77	8.56	-24.4%	3.8%	72.4	73.9	-2.0%	52,000,000.0	21%

TT= Today's Turnover in crore, YT= Yesterday's Turnover in Crore, AT= Average of Last 20 day's Turnover, CP= Current Price, YP= Yesterday's Price, % Δ P= percentage change in price

Top Ten Gainer						Top Ten Loser					
Stock	CP	YP	AP	% Δ P	% Δ in P from AP	Stock	CP	YP	AP	% Δ P	% Δ in P from AP
APEXTANRY	115.7	105.2	106.77	10.0%	8.4%	ZAHEENSPIN	19.10	20.50	24.64	-6.8%	-22.5%
BDAUTOCA	36.6	33.3	31.95	9.9%	14.6%	RAHIMAFOOI	39.90	42.40	42.24	-5.9%	-5.5%
ICB	116.5	107.1	125.2	8.8%	-6.9%	GREENDELM	4.60	4.80	4.93	-4.2%	-6.7%
PREMIERLEA	8.8	8.1	8.535	8.6%	3.1%	ZAHINTEX	20.60	21.40	24.16	-3.7%	-14.7%
DBH	101.8	94.3	93.345	8.0%	9.1%	STANDARINS	13.30	13.80	15.18	-3.6%	-12.4%
PHOENIXFIN	18.6	17.3	16.365	7.5%	13.7%	ISLAMIINS	14.60	15.10	15.12	-3.3%	-3.4%
UNITEDINS	23.7	22.1	23.58	7.2%	0.5%	QSMRDYCELI	89.90	92.90	78.68	-3.2%	14.3%
ICBIBANK	4.6	4.3	4.385	7.0%	4.9%	BDWELDING	17.20	17.70	17.55	-2.8%	-2.0%
APEXFOODS	107.8	100.8	106.75	6.9%	1.0%	PLFSL	14.60	15.00	13.70	-2.7%	6.6%
FBFIF	6.2	5.8	6.355	6.9%	-2.4%	IFADAUTOS	101.20	103.70	114.17	-2.4%	-11.4%

AP= Average Price of last 20 day,% Δ in P from AP= percentage change in price from the 20-day average price

Industry /Sectors overview (Amounts in BDT. Crore)											
Sector	Trade Volume		MKT Turnover %		% Δ in Turnover	Market Capitalization		% of Total MC		% Δ in MC	
	Today	Yesterday	Today	Yesterday		Today	Yesterday	Today	Yesterday		
Bank	20.32	16.22	0.05	0.04	25.3%	39786.98	39712.77	16.15%	16.19%	0.2%	
Cement	10.03	11.10	0.03	0.03	-9.6%	15594.50	15593.41	6.33%	6.36%	0.0%	
Ceramics	6.59	3.34	0.02	0.01	97.3%	2654.02	2567.86	1.08%	1.05%	3.4%	
Engineering	73.73	106.47	0.19	0.29	-30.7%	14436.99	14392.32	5.86%	5.87%	0.3%	
Food & Allied Product	26.52	24.06	0.07	0.07	10.3%	23921.85	23964.77	9.71%	9.77%	-0.2%	
Insurance	3.94	4.04	0.01	0.01	-2.5%	6630.61	6538.12	2.69%	2.67%	1.4%	
IT	3.68	1.81	0.01	0.00	103.5%	499.08	488.53	0.20%	0.20%	2.2%	
Jute	0.91	1.37	0.00	0.00	-33.3%	88.55	86.99	0.04%	0.04%	1.8%	
Miscellaneous	22.68	29.09	0.06	0.08	-22.0%	8011.32	8093.03	3.25%	3.30%	-1.0%	
Mutual Fund	3.01	3.62	0.01	0.01	-16.9%	3420.80	3388.84	1.39%	1.38%	0.9%	
NBFI	29.56	19.55	0.08	0.05	51.2%	8188.48	7923.59	3.32%	3.23%	3.3%	
Paper & Printing	1.32	1.71	0.00	0.00	-22.8%	182.85	180.19	0.07%	0.07%	1.5%	
Pharmaceuticals & Chemicals	50.19	42.01	0.13	0.11	19.5%	39811.03	39812.57	16.16%	16.24%	0.0%	
Power & Energy	56.90	47.39	0.15	0.13	20.1%	33298.36	33374.17	13.52%	13.61%	-0.2%	
Service & Real Estate	36.40	15.83	0.09	0.04	130.0%	1844.54	1833.99	0.75%	0.75%	0.6%	
Tannery	6.16	2.27	0.02	0.01	170.8%	2382.27	2377.86	0.97%	0.97%	0.2%	
Telecommunication	6.15	6.23	0.02	0.02	-1.3%	35901.76	35297.15	14.58%	14.39%	1.7%	
Textile	25.69	26.83	0.07	0.07	-4.2%	7627.73	7593.95	3.10%	3.10%	0.4%	
Travel & Leisure	5.62	7.14	0.01	0.02	-21.2%	2034.44	2000.05	0.83%	0.82%	1.7%	

MC= Market Capitalization, % Δ in Turnover= change in turnover from last day, % Δ in MC= change in Market cap from last day

Index Movers	Index Shakers	Sector wise P/E			
GP	BERGERPBL	Bank	9.42	NBFI	41.38
DBH	MARICO	Cement	34.84	Paper & Printing	64.94
RAKCERAMIC	BATBC	Ceramics	44.50	Pharmaceuticals & Chemicals	27.73
MJLBD	SPCL	Engineering	29.61	Power & Energy	15.04
IDLC	TITASGAS	Food & Allied Product	30.61	Service & Real Estate	41.82
ACI	RENATA	Insurance	14.46	Tannery	51.83
ICB	DESCO	IT	15.81	Telecommunication	24.71
UNIQUEHRL	IFADAUTOS	Jute	63.42	Textile	18.33
BSCCL	BATASHOE	Miscellaneous	35.06	Travel & Leisure	13.31
BXPHERMA	NBL				

Important News

Company News:

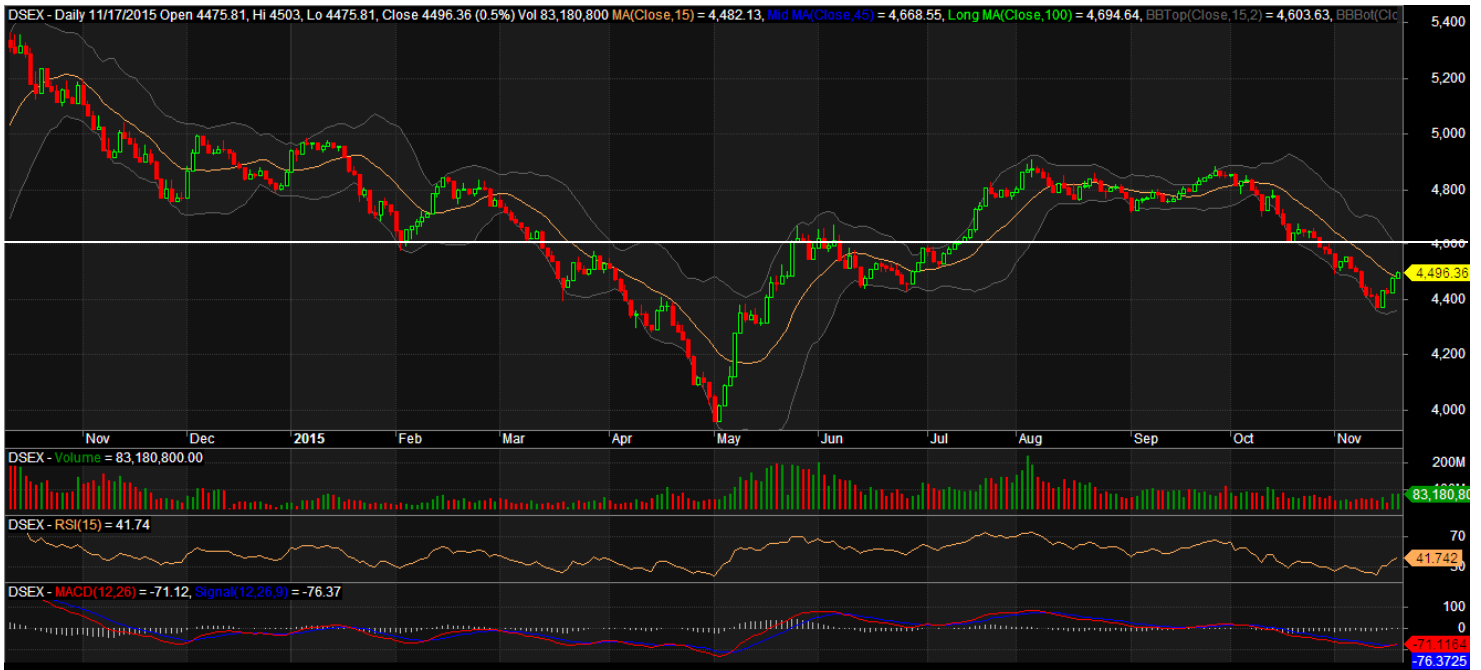
FAMILYTEX: Q3 Financials:(Q3 Un-audited): EPS was Tk. 0.23 for July-September, 2015 as against Tk. 0.26 for July-September, 2014; EPS was Tk. 1.34 for January-September, 2015 as against Tk. 2.44 for January-September, 2014. NOCFPS was Tk. 0.83 for January-September, 2015 as against Tk. 0.29 for January-September, 2014. NAV per share was Tk. 14.33 as of September 30, 2015 and Tk. 14.14 as of December 31, 2014.

Recent Dividend Declaration

Ticker	Dividend	Record Date
others PP Woven Bag Industries	15%B	23.11.15
Rahim Textile Mills Ltd.	40%B	17.11.15
Fu-Wang Foods Limited	15%B	19.11.15

Note: C= cash Dividend, B= Bonus Dividend, R=Right, N/A=NotApplicable

DSEX Technical Graph for last year



MTB CAPITAL LIMITED

Corporate head office

Level: 3, MTB Tower, 111, Kazi Nazrul Islam Avenue, Dhaka

Phone: 8321714, Fax: 8321543

www.mtbcap.com

A mutual Trust Bank Company

you can invest with US

Disclaimer

This report has been prepared by the MTB Capital Limited (MTBCL) on the basis of available information in the market and it is provided for the purposes only. It is not to be used as an offer for buying or selling any instruments. If anyone takes any action relying on this information, shall be responsible solely by him/her self for any consequences. The best care has been taken to make the report informative. MTBCL doesn't give any warrant or guarantee that the report or such information is fully accurate. The information that are provided here is the exclusive property of MTBCL and can not be distributed without prior consent of MTBCL.