

Today's Market Overview



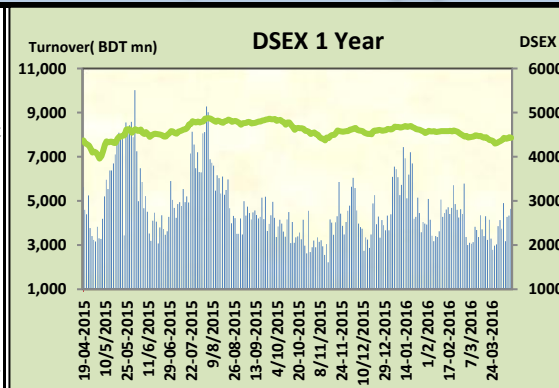
Sunday, April 10, 2016

| | | | | | | |
|--------------------------|----------|---------------|----------------------|-------------------------|--------------------------|--------------------------|
| DSEX | 4,431.13 | -0.27% | Issues Traded | ↑ Advanced 99 | ↓ Declined 185 | ↔ Unchanged 35 |
| Turnover (BDT mn) | 4,637.07 | 6.98% | | | | |

Market observed sharp fall after two days of gain with slightly improved turnover. The premier bourse of the nation opened with positive mood and gained almost 30 points till the midsession, soon after the midsession market observed extensive sale pressure thus pushed market in the red zone and market couldn't come out from the red zone moreover velocity of sale pressure intensified in last hour. Turnover was the main vibration tool throughout the session and that actually eased the tension of the investors as it crossed 4.5 billion with continuing mood. Participation level implied investors remained busy in profit taking and shifting, as we have seen Power and Bank sector were in demand while NBFI, Cement & Pharmaceuticals observed some severity. Most of the concentration occurred in Power, Bank & Engineering. Other two indices DS30 & DSES the shariah based index both performed poor. Most of the major sectors performed mixed. Service was the best gainer followed by Power & Telecom. IT was the worst loser followed by cement & NBFI.

The general gauge DSEX ended at 4431.13 with a decline of -0.3% which cut 11.94 points from the broad DSEX. The Turnover advanced slightly by 7.0% which was 303 Million BDT healthier than that of previous day and finally finished the mark at 4637.07 million BDT. A total of 99 issues advanced with 185 declined and 35 remained unchanged. Sectors that improved were: Bank (+0.2%) Power (+1.6%) Service (+1.9%) Telecom (+1.0%) Miscellaneous (+0.4%) Jute (+1.2%) & Sectors that declined were: Cement (-2.4%) Ceramics (-1.4%) IT (-3.3%) NBFI (-1.6%) Pharmaceuticals (-1.1%) Textiles (-1.2%) Travel (-1.2%)

DOREENPOWR topped in the Volume chart with a turnover of 32.15 BDT crore. DSHGARMENTS ranked top in gainer chart with a price hike of +8.7% and UTTARABANK (-9.0%) topped in the loser chart with a decline of -9.9% from its prevailing price. GP led the way in the index mover chart while LAFSURCEML played the shatter part.



| Index Scenario | | | | Market Highlights | | | | |
|------------------------|---------------------|-----------|--------------|--------------------|---------------|------------------|-------------------|--------------|
| INDEX | Change | % Changes | | DSEX 52 week H/L | 4992/3960 | Market P/E (LTM) | 13.79 | |
| DSEX | 4431.13 | (11.94) | -0.3% | DSEX Week H/L | 4443/4409 | M.Cap | 3092673.4 | |
| DSES | 1070.38 | (5.52) | -0.5% | Group Performances | | | | |
| DS30 | 1681.13 | (5.11) | -0.3% | Category | Mkt Cap (mn.) | Δ % M.Cap | Turnover BDT (mn) | Δ % Turnover |
| Turnover Scenario | | | | Group A | 2,352,499.00 | 0.1% | 3,576.51 | 5.6% |
| Today's Turnover (mn.) | Change In BDT (mn.) | % Change | | Group B | 11,691.28 | -0.5% | 73.02 | -6.2% |
| 4637.07 | 303 | 7.0% | | Group N | 45,239.24 | -1.4% | 743.63 | 15.2% |
| | | | | Group Z | 41,035.21 | -2.9% | 205.24 | 8.4% |

| Top Ten Volume (in BDT. crore) | | | | | | | | | | |
|--------------------------------|-------|-------|-------|-----------------|--------|-------|-------|-------|------------------|----------------|
| Stock | TT | YT | AT | % Δ in Turnover | TT/AT | CP | YP | % Δ P | Number of shares | Public Holding |
| DOREENPWR | 32.15 | 16.11 | 38.45 | 99.6% | -16.4% | 72.3 | 78.5 | -7.9% | 80,000,000.0 | 23% |
| BSRMLTD | 22.94 | 14.08 | 11.88 | 62.9% | 93.1% | 189.1 | 193.3 | -2.2% | 173,351,038.0 | 9% |
| KEYACOSMET | 15.98 | 14.25 | 13.00 | 12.1% | 23.0% | 14.6 | 15.8 | -7.6% | 707,702,444.0 | 66% |
| TITASGAS | 14.87 | 12.00 | 5.69 | 23.9% | 161.5% | 49.2 | 48.3 | 1.9% | 989,221,831.0 | 25% |
| AMANFEED | 14.80 | 12.20 | 12.29 | 21.3% | 20.5% | 84.3 | 78.9 | 6.8% | 80,000,000.0 | 23% |
| IBNSINA | 14.40 | 16.11 | 5.65 | -10.6% | 155.0% | 206.4 | 200.4 | 3.0% | 22,453,200.0 | 46% |
| POWERGRID | 14.20 | 14.97 | 5.10 | -5.1% | 178.5% | 61.9 | 60.2 | 2.8% | 460,912,991.0 | 5% |
| ACI | 12.08 | 15.05 | 4.02 | -19.8% | 200.5% | 574 | 569.9 | 0.7% | 39,553,240.3 | 27% |
| LANKABAFIN | 9.00 | 11.18 | 11.00 | -19.5% | -18.2% | 35.4 | 36.5 | -3.0% | 240,643,434.9 | 61% |
| SQURPHARMA | 8.11 | 4.04 | 7.67 | 101.0% | 5.8% | 254.6 | 257.8 | -1.2% | 623,586,546.0 | 9% |

TT= Today's Turnover in crore, YT= Yesterday's Turnover in Crore, AT= Average of Last 20 day's Turnover, CP= Current Price, YP= Yesterday's Price, % Δ P= percentage change in price

 **Top Ten Gainer**

Top Ten Loser 

| Stock | CP | YP | AP | % Δ P | % Δ in P from AP | Stock | CP | YP | AP | % Δ P | % Δ in P from AP |
|------------|-------|-------|---------|-------|------------------|------------|--------|--------|--------|-------|------------------|
| DSHGARME | 225.4 | 207.3 | 192.115 | 8.7% | 17.3% | UTTARABANK | 19.10 | 21.00 | 20.70 | -9.0% | -7.7% |
| JAMUNAOIL | 171.1 | 157.4 | 153.31 | 8.7% | 11.6% | DOREENPWR | 72.30 | 78.50 | NM | -7.9% | NM |
| ECABLES | 112.4 | 103.5 | 106.175 | 8.6% | 5.9% | DSSL | 15.20 | 16.50 | NM | -7.9% | NM |
| MPETROLEUM | 157.5 | 145.7 | 142.12 | 8.1% | 10.8% | KEYACOSMEI | 14.60 | 15.80 | 14.59 | -7.6% | 0.1% |
| GEMINISEA | 797.7 | 742.1 | 680.165 | 7.5% | 17.3% | RDFOOD | 13.70 | 14.70 | 14.81 | -6.8% | -7.5% |
| PRAGATILIF | 144.4 | 134.9 | 118.015 | 7.0% | 22.4% | 7THICB | 105.90 | 113.10 | 112.60 | -6.4% | -6.0% |
| AMANFEED | 84.3 | 78.9 | 76.885 | 6.8% | 9.6% | NHFIL | 34.70 | 36.80 | 33.46 | -5.7% | 3.7% |
| PADMAOIL | 183.3 | 173.5 | 173.695 | 5.6% | 5.5% | RNSPIN | 24.00 | 25.40 | 23.81 | -5.5% | 0.8% |
| ARAMIT | 386.3 | 367.2 | 413.745 | 5.2% | -6.6% | BIFC | 8.60 | 9.10 | 9.34 | -5.5% | -7.9% |
| ISLAMIBANK | 26.8 | 25.5 | 23.525 | 5.1% | 13.9% | SHASHADNIM | 37.10 | 39.10 | 40.25 | -5.1% | -7.8% |

AP= Average Price of last 20 day,% Δ in P from AP= percentage change in price from the 20-day average price

Industry /Sectors overview (Amounts in BDT. Crore)

| Sector | Trade Volume | | MKT Turnover % | | % Δ in Turnover | Market Capitalization | | % of Total MC | | % Δ in MC |
|-----------------------------|--------------|-----------|----------------|-----------|-----------------|-----------------------|-----------|---------------|-----------|-----------|
| | Today | Yesterday | Today | Yesterday | | Today | Yesterday | Today | Yesterday | |
| Bank | 28.60 | 21.97 | 0.06 | 0.05 | 30.2% | 37964.01 | 37887.09 | 15.53% | 15.49% | 0.2% |
| Cement | 10.38 | 14.36 | 0.02 | 0.03 | -27.7% | 13582.36 | 13911.65 | 5.56% | 5.69% | -2.4% |
| Ceramics | 4.19 | 4.16 | 0.01 | 0.01 | 0.7% | 2629.54 | 2667.19 | 1.08% | 1.09% | -1.4% |
| Engineering | 64.56 | 53.92 | 0.14 | 0.13 | 19.7% | 15484.44 | 15475.92 | 6.33% | 6.33% | 0.1% |
| Food & Allied Product | 15.37 | 17.20 | 0.03 | 0.04 | -10.6% | 23021.93 | 23021.08 | 9.42% | 9.41% | 0.0% |
| Insurance | 9.60 | 9.90 | 0.02 | 0.02 | -3.0% | 7301.13 | 7284.86 | 2.99% | 2.98% | 0.2% |
| IT | 8.16 | 10.69 | 0.02 | 0.03 | -23.7% | 1013.34 | 1048.01 | 0.41% | 0.43% | -3.3% |
| Jute | 0.52 | 0.73 | 0.00 | 0.00 | -28.8% | 84.23 | 83.22 | 0.03% | 0.03% | 1.2% |
| Miscellaneous | 30.20 | 26.80 | 0.07 | 0.06 | 12.7% | 8389.59 | 8353.52 | 3.43% | 3.42% | 0.4% |
| Mutual Fund | 1.37 | 2.25 | 0.00 | 0.01 | -39.1% | 3675.09 | 3697.75 | 1.50% | 1.51% | -0.6% |
| NBFI | 22.47 | 39.16 | 0.05 | 0.09 | -42.6% | 7995.70 | 8129.54 | 3.27% | 3.32% | -1.6% |
| Paper & Printing | 0.25 | 0.59 | 0.00 | 0.00 | -57.1% | 170.53 | 172.24 | 0.07% | 0.07% | -1.0% |
| Pharmaceuticals & Chemicals | 91.36 | 88.76 | 0.20 | 0.21 | 2.9% | 41410.75 | 41866.13 | 16.94% | 17.12% | -1.1% |
| Power & Energy | 114.98 | 81.73 | 0.26 | 0.20 | 40.7% | 34548.39 | 33992.12 | 14.13% | 13.90% | 1.6% |
| Service & Real Estate | 9.78 | 8.32 | 0.02 | 0.02 | 17.6% | 1777.16 | 1744.51 | 0.73% | 0.71% | 1.9% |
| Tannery | 1.95 | 1.10 | 0.00 | 0.00 | 78.2% | 2169.23 | 2184.63 | 0.89% | 0.89% | -0.7% |
| Telecommunication | 4.47 | 2.75 | 0.01 | 0.01 | 62.3% | 33534.37 | 33193.81 | 13.72% | 13.57% | 1.0% |
| Textile | 28.26 | 25.38 | 0.06 | 0.06 | 11.3% | 7746.54 | 7838.52 | 3.17% | 3.21% | -1.2% |
| Travel & Leisure | 2.66 | 5.22 | 0.01 | 0.01 | -49.1% | 1947.79 | 1971.56 | 0.80% | 0.81% | -1.2% |

MC= Market Capitalization, % Δ in Turnover= change in turnover from last day, % Δ in MC= change in Market cap from last day

| Index Movers | Index Shakers | Sector wise P/E (Fd.) | | | |
|--------------|---------------|-----------------------|--------|-----------------------------|-------|
| GP | LAFSURCEML | Bank | 8.56 | NBFI | 39.77 |
| ISLAMIBANK | SQURPHARMA | Cement | 28.63 | Paper & Printing | 88.15 |
| JAMUNAOIL | RENATA | Ceramics | 33.99 | Pharmaceuticals & Chemicals | 26.52 |
| MPETROLEUM | UTTARABANK | Engineering | 58.32 | Power & Energy | 16.14 |
| PADMAOIL | BSRMLTD | Food & Allied Product | 29.38 | Service & Real Estate | 32.46 |
| BSRMSTEEL | UPGDCL | Insurance | 13.56 | Tannery | 33.76 |
| TITASGAS | CITYBANK | IT | 110.98 | Telecommunication | 26.19 |
| DESCO | DOREENPWR | Jute | 154.85 | Textile | 16.96 |
| POWERGRID | BXPHARMA | Miscellaneous | 33.63 | Travel & Leisure | 20.27 |
| MJLBD | HEIDELBCEM | | | | |

Important News

Company News:

SHASHADNIM: Dividend Declaration: The Board of Directors has recommended 15% final cash dividend (i.e. total 25% cash dividend for the year 2015 inclusive of 10% Interim cash dividend which has already been paid). Date of AGM: 02.06.2016, Time: 10:00 AM, Venue: Trust Milonayaton, 545, Old Airport Road, Dhaka Cantonment, Dhaka. Record date: 03.05.2016. The Company has also reported Consolidated EPS of Tk. 5.07, Consolidated NAV per share of Tk. 42.35 and Consolidated NOCFPS of Tk. 4.81 for the year ended on December 31, 2015 as against Tk. 1.59 (restated), Tk. 25.28 (restated) and Tk. 1.71 (restated) respectively for the year ended on December 31, 2014.

SIBL: Dividend Declaration: The Board of Directors has recommended 15% cash dividend and 5% stock dividend for the year ended on December 31, 2015. Date of AGM: 19.05.2016, Time and Venue of the AGM will be notified later on. Record Date: 02.05.2016. The Company has also reported Consolidated EPS of Tk. 2.91, Consolidated NAV per share of Tk. 18.42 and Consolidated NOCFPS of Tk. 6.59 for the year ended on December 31, 2015 as against Tk. 2.74, Tk. 17.31 and Tk. 4.36 respectively for the year ended on December 31, 2014

Recent Dividend Declaration

Ticker

Dividend

Record Date

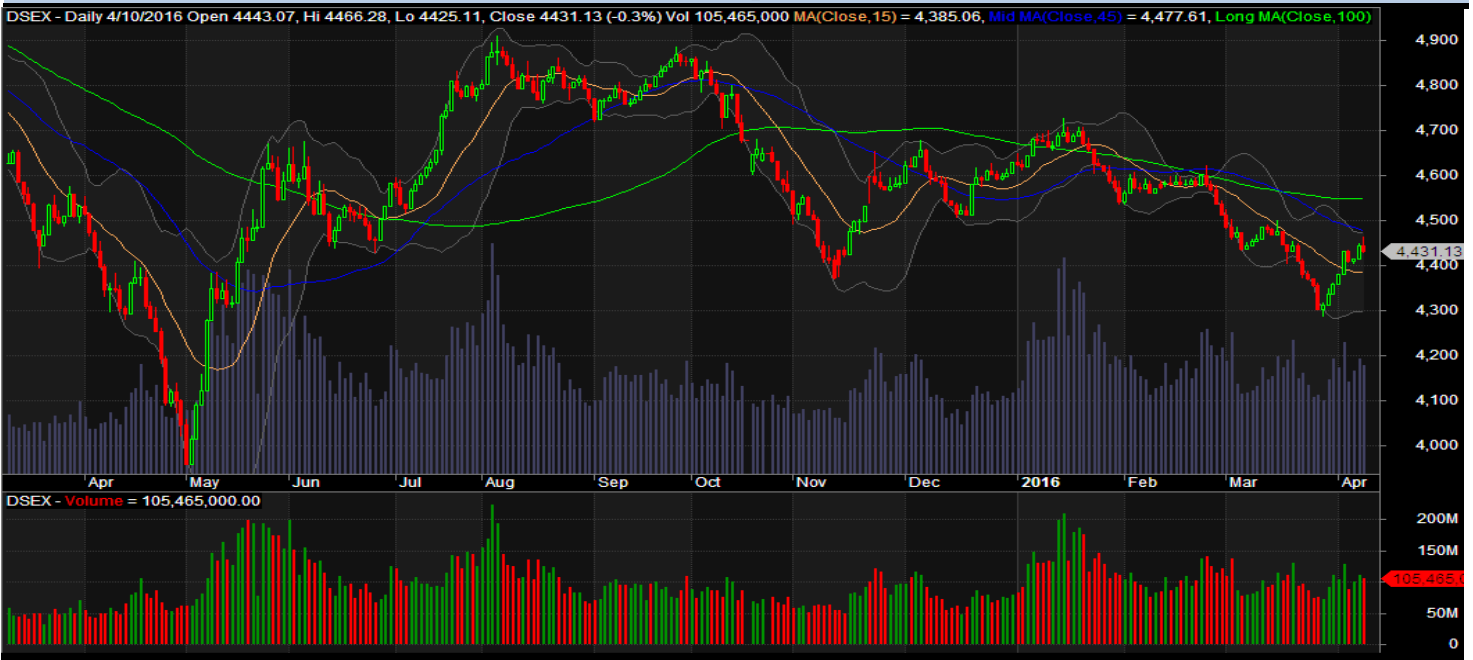
Lafarge Surma Cement Limited

5% C (Final)

13.04.16

Note: C= cash Dividend, B= Bonus Dividend, R=Right, N/A=NotApplicable

DSEX Technical Graph for last one year



MTB CAPITAL LIMITED

Corporate head office

Level: 3, MTB Tower, 111, Kazi Nazrul Islam Avenue, Dhaka

Phone: 8321714, Fax: 8321543

www.mtbcap.com

A Mutual Trust Bank Company

you can invest with us

Disclaimer

This report has been prepared by the MTB Capital Limited (MTBCL) on the basis of available information in the market and it is provided for the purposes only. It is not to be used as an offer for buying or selling any instruments. If anyone takes any action relying on this information, shall be responsible solely by him/her self for any consequences. The best care has been taken to make the report informative. MTBCL doesn't give any warrant or guarantee that the report or such information is fully accurate. The information that are provided here is the exclusive property of MTBCL and can not be distributed without prior consent of MTBCL.