

Today's Market Overview

Tuesday, October 27, 2015

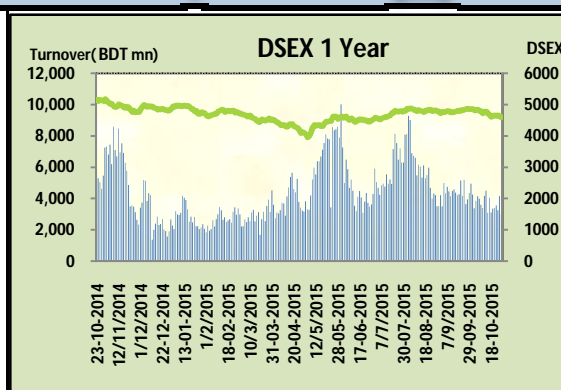


DSEX	4,589.33	-0.89%	Issues Traded	Advanced	Declined	Unchanged
Turnover (BDT mn)	2,970.61	-28.50%		74	205	42

Market observed a bad day from every barometer related to capital market. Market hit the lowest value of turnover after 130 trading days. The turnover reflected very poor participation level from the investors. From the very beginning of the trading session it seemed investors were suffering from distrust or uncertainty. Especially big cap stocks failed to keep the price range with huge sale pressure from investors. Moreover quarterly earnings and dividend declaration couldn't cool the temptation of the investors from fear of further fall. The premier bourse of the nation opened with a very negative mood and continued the same mood till the closure and there was no symptom to recover the market for once. All the sectors frustrated the investors except Telecom. Other two indices DS30 & DSES the shariah based index both performed very poor.

The general gauge DSEX ended at 4589.33 with a decline of -0.9% which cut 41.25 points from the broad DSEX. The Turnover declined heavily by -28.5% which was 1184 Million BDT poorer than that of previous day and finally finished the mark at 2970.61 million BDT. A total of 74 issues advanced with 205 declined and 42 remained unchanged. Sectors that improved were: Telecom (+0.8%) & sectors that declined were: Bank (-0.7%) Cement (-2.3%) Ceramics (-1.3%) Engineering (-2.0%) NBFI (-1.4%) Pharmaceuticals (-0.6%) Power (-1.2%) Service (-1.6%) Textile (-1.0%) Travel (-0.8%) IT (-1.6%) Miscellaneous (-1.1%)

LAFSURCEML topped in the Volume chart with a turnover of 16.90 BDT crore. ZEALBANGLA ranked top gainer chart with a price hike of +24% and OAL topped in the loser chart with a decline of -13.3% from its prevailing price. GP led the way in the index mover chart while LAFSURCEML played the shatter part.



Index Scenario				Market Highlights				
	INDEX	Change	% Changes	DSEX 52 week H/L	5334/3960	Market P/E (LTM)	14.82	
	DSEX	4589.33	(41.25)	DSEX Week H/L	4658/4589	M.Cap (mn)	3181076.7	
	DSES	1101.62	(8.28)	Group Performances				
	DS30	1735.69	(15.52)	Category	Mkt Cap (mn.)	Δ % M.Cap	Turnover BDT (mn)	Δ % Turnover
				Group A	2,455,084.41	-0.7%	2,439.74	-21.2%
				Group B	14,193.03	-0.2%	143.69	4.5%
				Group N	31,055.97	-2.8%	279.78	-21.8%
				Group Z	24,365.97	-1.6%	28.20	-12.3%

Top Ten Volume (in BDT. crore)										
Stock	TT	YT	AT	% Δ in Turnover	TT/AT	CP	YP	% Δ P	Number of shares	Public Holding
LAFSURCEML	16.90	14.54	16.82	16.3%	0.5%	82.6	85.4	-3.3%	1,161,373,500.0	30%
SPCL	12.35	11.47	5.59	7.7%	121.0%	165.3	173.7	-4.8%	133,137,900.0	19%
UNITEDAIR	10.23	5.88	6.50	74.2%	57.5%	9.8	9.9	-1.0%	624,808,800.0	74%
KDSALTD	8.75	9.54	15.62	-8.4%	-44.0%	72.5	68.6	5.7%	52,000,000.0	21%
CNATEX	8.41	8.76	3.85	-4.0%	118.1%	14.4	15	-4.0%	194,250,000.0	23%
SQURPHARMA	6.65	4.78	8.59	39.1%	-22.6%	242.1	242.9	-0.3%	623,586,546.0	9%
AMANFEED	6.56	7.65	7.10	-14.3%	-7.7%	58.6	60.5	-3.1%	80,000,000.0	23%
CVOPRL	6.39	15.71	5.75	-59.3%	11.3%	437	449.3	-2.7%	19,800,000.0	34%
OLYMPIC	6.32	2.71	3.92	133.6%	61.4%	301.1	302.1	-0.3%	158,681,656.8	27%
KPCL	6.30	7.77	4.04	-18.9%	56.1%	72.1	72.9	-1.1%	361,284,710.0	13%

TT= Today's Turnover in crore, YT= Yesterday's Turnover in Crore, AT= Average of Last 20 day's Turnover, CP= Current Price, YP= Yesterday's Price, % Δ P= percentage change in price

Top Ten Gainer						Top Ten Loser					
Stock	CP	YP	AP	% Δ P	% Δ in P from AP	Stock	CP	YP	AP	% Δ P	% Δ in P from AP
ZEALBANGLA	9.3	7.5	7.05	24.0%	31.9%	OAL	37.00	42.70	46.39	-13.3%	-20.2%
MIRACLEIND	26.1	23.8	17.755	9.7%	47.0%	SHYAMPSUG	6.90	7.70	6.82	-10.4%	1.2%
3RDICB	261	240.3	262.47	8.6%	-0.6%	AZIZPIPES	42.30	47.00	33.89	-10.0%	24.8%
ALLTEX	21.1	19.9	19.075	6.0%	10.6%	KAY&QUE	18.40	20.20	16.06	-8.9%	14.6%
METROSPIN	9.9	9.4	9.62	5.3%	2.9%	SAMATALETF	27.00	29.60	29.22	-8.8%	-7.6%
APEXFOODS	118.5	112.6	121.13	5.2%	-2.2%	RENWICKJA	258.40	281.10	270.80	-8.1%	-4.6%
JUTESPINN	51.1	48.6	57.415	5.1%	-11.0%	NITOLINS	20.40	22.00	22.26	-7.3%	-8.4%
IMAMBUTTON	11.8	11.3	12.92	4.4%	-8.7%	MODERNDYE	119.70	126.80	145.73	-5.6%	-17.9%
POWERGRID	45	43.4	44.31	3.7%	1.6%	RELIANCE1	6.90	7.30	7.17	-5.5%	-3.7%
HAKKANIPUL	50.7	48.9	47.255	3.7%	7.3%	ABBANK	20.70		22.19		-6.7%

AP= Average Price of last 20 day,% Δ in P from AP= percentage change in price from the 20-day average price

Industry /Sectors overview (Amounts in BDT. Crore)											
Sector	Trade Volume		MKT Turnover %		% Δ in Turnover	Market Capitalization		% of Total MC		% Δ in MC	
	Today	Yesterday	Today	Yesterday		Today	Yesterday	Today	Yesterday		
Bank	25.44	27.74	0.09	0.08	-8.3%	40069.96	40336.88	15.89%	15.88%	-0.7%	
Cement	19.96	19.06	0.07	0.05	4.7%	15865.01	16239.14	6.29%	6.39%	-2.3%	
Ceramics	3.72	5.51	0.01	0.02	-32.4%	2698.50	2733.89	1.07%	1.08%	-1.3%	
Engineering	42.21	63.63	0.15	0.18	-33.7%	14464.72	14766.05	5.74%	5.81%	-2.0%	
Food & Allied Product	16.17	17.24	0.06	0.05	-6.2%	24139.38	24255.99	9.57%	9.55%	-0.5%	
Insurance	3.24	4.59	0.01	0.01	-29.5%	6960.19	7035.20	2.76%	2.77%	-1.1%	
IT	2.16	3.71	0.01	0.01	-41.6%	518.89	527.38	0.21%	0.21%	-1.6%	
Jute	0.66	1.92	0.00	0.01	-65.5%	93.99	95.63	0.04%	0.04%	-1.7%	
Miscellaneous	21.14	21.38	0.07	0.06	-1.1%	8289.98	8370.09	3.29%	3.29%	-1.0%	
Mutual Fund	4.39	3.67	0.02	0.01	19.6%	3488.10	3495.66	1.38%	1.38%	-0.2%	
NBFI	11.78	11.59	0.04	0.03	1.6%	7914.92	8025.66	3.14%	3.16%	-1.4%	
Paper & Printing	2.14	2.42	0.01	0.01	-11.9%	219.77	220.00	0.09%	0.09%	-0.1%	
Pharmaceuticals & Chemicals	28.81	39.91	0.10	0.11	-27.8%	40174.74	40428.06	15.94%	15.91%	-0.6%	
Power & Energy	49.40	63.63	0.17	0.18	-22.4%	37213.48	37673.80	14.76%	14.83%	-1.2%	
Service & Real Estate	6.70	8.31	0.02	0.02	-19.5%	1810.67	1839.22	0.72%	0.72%	-1.6%	
Tannery	5.88	5.37	0.02	0.01	9.5%	2504.06	2507.38	0.99%	0.99%	-0.1%	
Telecommunication	3.52	9.65	0.01	0.03	-63.5%	35349.58	35062.99	14.02%	13.80%	0.8%	
Textile	29.41	43.92	0.10	0.12	-33.0%	8119.59	8198.01	3.22%	3.23%	-1.0%	
Travel & Leisure	11.34	7.34	0.04	0.02	54.5%	2213.77	2217.69	0.88%	0.87%	-0.2%	

MC= Market Capitalization, % Δ in Turnover= change in turnover from last day, % Δ in MC= change in Market cap from last day

Index Movers	Index Shakers	Sector wise P/E			
GP	LAFSURCEML	Bank	9.47	NBFI	21.54
POWERGRID	SPCL	Cement	35.02	Paper & Printing	76.82
ISLAMIBANK	GLAXOSMITH	Ceramics	37.80	Pharmaceuticals & Chemicals	27.49
KDSALTD	BATBC	Engineering	32.60	Power & Energy	15.37
ACTIVEFINE	PUBALIBANK	Food & Allied Product	33.79	Service & Real Estate	41.55
RENATA	OAL	Insurance	14.86	Tannery	34.00
ONEBANKLTD	ABBANK	IT	18.41	Telecommunication	24.19
TRUSTBANK	UPGDCL	Jute	119.08	Textile	17.34
SOUTHEASTB	BSRMSTEEL	Miscellaneous	33.52	Travel & Leisure	14.44
NCCBANK	MPETROLEUM				

Important News

Company News:

PRAGATILIF: Category Change: The Company will be placed in 'A' category from existing 'Z' category with effect from October 28, 2015 as the Company has reported disbursement of 17% cash dividend and 5% stock dividend for the year ended on December 31, 2014.

OAL: Dividend Declaration: The Board of Directors has recommended 5% cash dividend to the general public shareholders other than Sponsors/Directors shareholders & 7% stock dividend to the all shareholders for the year ended on 30.06.2015. The Sponsors/Directors hold 3,60,00,000 shares and general shareholders will get cash dividend of Tk. 4,04,55,000.00.

RENWICKJA: Dividend Declaration: The Board of Directors has recommended 12% cash dividend for the year ended on June 30, 2015. Date of AGM: 20.12.2015, Time: 10:00 AM, Venue: Mills premises, Renwick Road, Kushtia-7000. Record Date: 17.11.2015. The Company has also reported Net Profit after Tax of Tk. 6.17 million, EPS of Tk. 3.08, NAV per share of Tk. (30.61) and NOCFPS of Tk. 3.00 for the year ended on June 30, 2015 as against Tk. 11.16 million, Tk. 5.58, Tk. (31.51) and Tk. (11.74) respectively for the year ended on June 30, 2014.

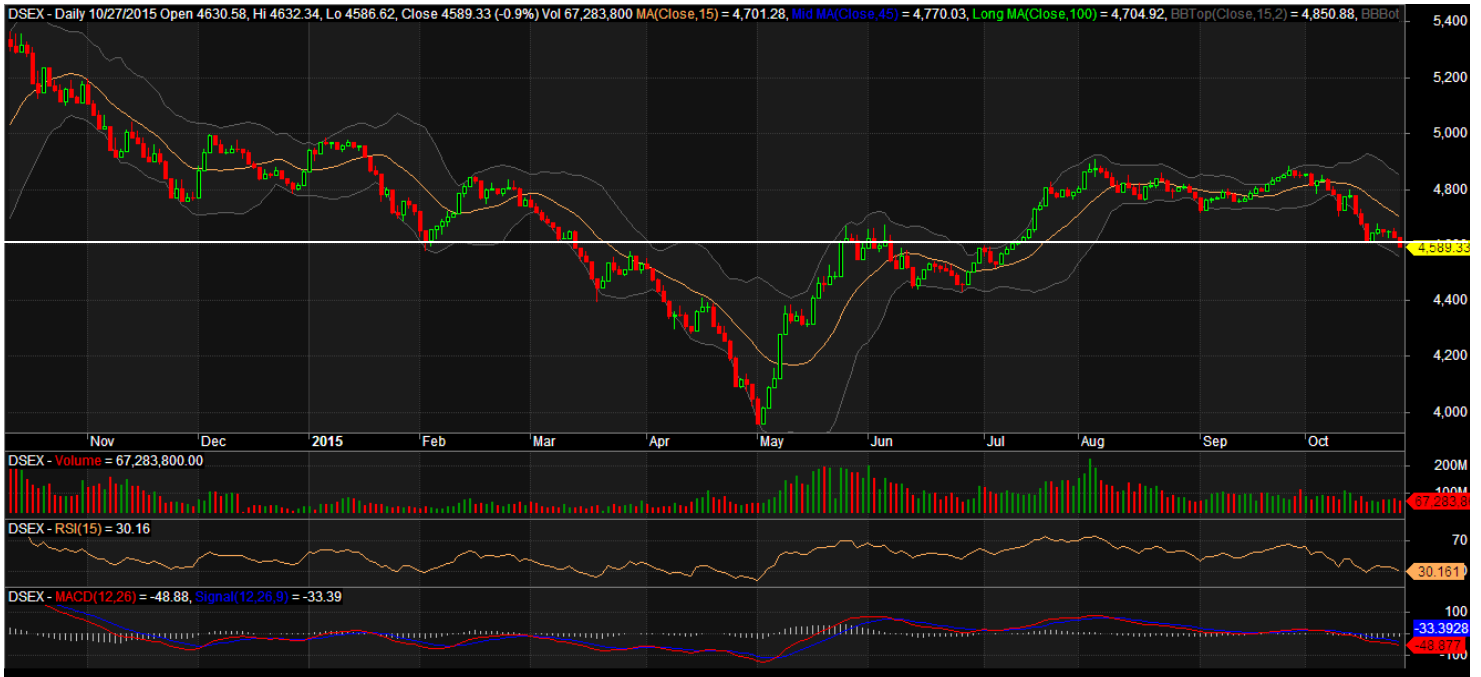
Recent Dividend Declaration

Ticker	Dividend	Record Date
--------	----------	-------------

Beach Hatchery Ltd.	5%B	28.10.15
---------------------	-----	----------

Note: C= cash Dividend, B= Bonus Dividend, R=Right, N/A=NotApplicable

DSEX Technical Graph for last one year



MTB CAPITAL LIMITED

Corporate head office

Level: 3, MTB Tower, 111, Kazi Nazrul Islam Avenue, Dhaka

Phone: 8321714, Fax: 8321543

www.mtbcap.com

A mutual Trust Bank Company

you can invest with US

Disclaimer

This report has been prepared by the MTB Capital Limited (MTBCL) on the basis of available information in the market and it is provided for the purposes only. It is not to be used as an offer for buying or selling any instruments. If anyone takes any action relying on this information, shall be responsible solely by him/her self for any consequences. The best care has been taken to make the report informative. MTBCL doesn't give any warrant or guarantee that the report or such information is fully accurate. The information that are provided here is the exclusive property of MTBCL and can not be distributed without prior consent of MTBCL.