

# Today's Market Overview



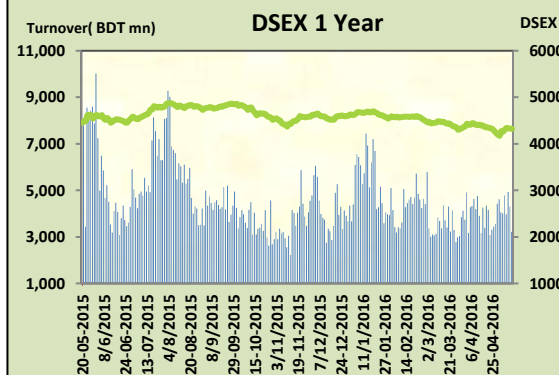
Wednesday, May 11, 2016

<b>DSEX</b>	4,318.45	<b>-0.27%</b>	<b>Issues Traded</b>	<b>Advanced</b>	<b>Declined</b>	<b>Unchanged</b>
<b>Turnover (BDT mn)</b>	3,220.24	<b>-25.23%</b>		136	127	56

Market ended in negative zone with a very sluggish turnover. The premier bourse of the nation opened with a negative mood and continued the same mood till the closure. Participation level remained very poor throughout the session and investors were in vigilant mood. Decline in turnover created pressure in investors mind as turnover broke the trend of last couple of days as it failed to cross 3.5 billion. Most of the major sectors were faced severity and performed very poor. Notable concentration occurred in Textiles, Engineering & Food. Most of the major sectors failed to put green mark except NBFI. Other two indices DS30 & DSES the shariah based index both performed poor. some small cap stocks were gainer, Jute was the best gainer followed by Tannery & NBFI. Service was the worst loser followed by Telecom & Paper.

The general gauge DSEX ended at 4318 with a decline of -0.27% which cut 11.87 points from the broad DSEX. The Turnover declined heavily by -25.2% which was 1087 Million BDT poorer than that of previous day and finally finished the mark at 3220.24 million BDT. A total of 136 issues advanced with 127 declined and 56 remained unchanged. Sectors that improved were: IT (+0.2%) Jute (+0.7%) NBFI (+0.5%) Tannery (+0.7%) Textiles (+0.4%) & Sectors that declined were: Cement (-0.3%) Ceramics (-0.2%) Engineering (-0.7%) Food (-0.4%) Insurance (-0.8%) Pharmaceuticals (-0.4%) Power (-0.6%) Telecom (-0.8%) Service (-1.1%).

UPGDCL topped in the Volume chart with a turnover of 23.29 BDT crore. KAY&QUE ranked top in gainer chart with a price hike of +9.8 % and PIONEERINS topped in the loser chart with a decline of -11.7% from its prevailing price. BRACBANK led the way in the index mover chart while GP played the shatter part.



Index Scenario				Market Highlights				
	<b>INDEX</b>	<b>Change</b>	<b>% Changes</b>	<b>DSEX 52 week H/L</b>	4874/3960	<b>Market P/E (LTM)</b>	12.73	
	<b>DSEX</b>	4318.45	(11.87)	<b>DSEX Week H/L</b>	4282/4171	<b>M.Cap</b>	3066404.2	
	<b>DSES</b>	1062.49	(3.71)	<b>Group Performances</b>				
	<b>DS30</b>	1673.54	(7.54)	<b>Category</b>	<b>Mkt Cap (mn.)</b>	<b>Δ % M.Cap</b>	<b>Turnover BDT (mn)</b>	<b>Δ % Turnover</b>
				<b>Group A</b>	2,342,579.30	-0.4%	2,764.67	-15.5%
				<b>Group B</b>	10,531.37	0.9%	32.99	-18.0%
				<b>Group N</b>	41,044.13	0.3%	244.40	28.9%
				<b>Group Z</b>	37,666.22	0.7%	89.92	25.0%

Top Ten Volume (in BDT. crore)										
Stock	TT	YT	AT	% Δ in Turnover	TT/AT	CP	YP	% Δ P	Number of shares	Public Holding
UPGDCL	23.29	16.20	16.46	43.7%	41.5%	167.9	171.7	-2.2%	274,244,180.0	9%
BSRMSTEEL	14.93	15.01	8.60	-0.5%	73.6%	99.5	100.7	-1.2%	362,944,698.6	5%
BSRMLTD	14.23	13.72	16.79	3.7%	-15.3%	135.8	140.4	-3.3%	15,218,280.0	19%
BATBC	11.73	0.21	0.74	5374.3%	1476.1%	2700.7	2710.4	-0.4%	341,775,000.0	13%
MJLBD	11.71	22.22	19.09	-47.3%	-38.7%	108.3	109	-0.6%	190,686,141.8	9%
FEKDIL	9.77	3.35	3.76	191.9%	160.2%	23.6	22.8	3.5%	276,739,950.1	61%
DOREENPWR	9.67	4.12	8.95	135.0%	8.1%	56.4	52.9	6.6%	137,132,037.0	19%
LINDEBD	7.92	15.31	6.06	-48.2%	30.8%	1437.5	1425.5	0.8%	190,417,988.2	27%
SPCL	6.30	12.10	3.28	-47.9%	91.9%	115.6	119	-2.9%	294,400,000.0	24%
KEYACOSMET	5.77	2.46	8.59	134.6%	-32.8%	11.5	11.1	3.6%	54,285,000.0	38%

TT= Today's Turnover in crore, YT= Yesterday's Turnover in Crore, AT= Average of Last 20 day's Turnover, CP= Current Price, YP= Yesterday's Price, % Δ P= percentage change in price

**Top Ten Gainer****Top Ten Loser**

Stock	CP	YP	AP	% Δ P	% Δ in P from AP	Stock	CP	YP	AP	% Δ P	% Δ in P from AP
KAY&QUE	28	25.5	20.36	9.8%	37.5%	PIONEERINS	27.80	31.50	31.64	-11.7%	-12.1%
ZEALBANGLA	9.1	8.3	7.32	9.6%	24.3%	EXIM1STMF	5.50	5.80	5.83	-5.2%	-5.7%
TUNGHAI	10.4	9.6	10.075	8.3%	3.2%	HRTEX	19.10	20.10	18.50	-5.0%	3.2%
DULAMIACOT	7	6.5	6.88	7.7%	1.7%	POPULAR1MF	4.20	4.40	4.28	-4.5%	-1.8%
IMAMBUTTON	9.9	9.2	9.275	7.6%	6.7%	KDSALTD	57.00	59.60	60.74	-4.4%	-6.2%
PLFSL	8.7	8.1	8.925	7.4%	-2.5%	DBH1STMF	4.90	5.10	5.01	-3.9%	-2.2%
DOREENPWR	56.4	52.9	NM	6.6%	NM	UNITEDAIR	5.30	5.50	5.16	-3.6%	2.8%
SHYAMPSUG	6.7	6.3	6.205	6.3%	8.0%	RAHIMAFOOI	47.90	49.70	40.01	-3.6%	19.7%
UNITEDINS	21.8	20.6	21.99	5.8%	-0.9%	MODERNDYE	80.80	83.80	83.39	-3.6%	-3.1%
BBS	34.6	32.9	32.875	5.2%	5.2%	ACTIVEFINE	50.20	52.00	50.18	-3.5%	0.0%

AP= Average Price of last 20 day,% Δ in P from AP= percentage change in price from the 20-day average price

**Industry /Sectors overview (Amounts in BDT. Crore)**

Sector	Trade Volume		MKT Turnover %		% Δ in Turnover	Market Capitalization		% of Total MC		% Δ in MC
	Today	Yesterday	Today	Yesterday		Today	Yesterday	Today	Yesterday	
Bank	17.83	24.23	0.06	0.07	-26.4%	36631.95	36626.75	15.10%	15.04%	0.0%
Cement	11.42	10.36	0.04	0.03	10.2%	12631.48	12667.43	5.21%	5.20%	-0.3%
Ceramics	2.39	2.92	0.01	0.01	-18.3%	2383.88	2387.89	0.98%	0.98%	-0.2%
Engineering	66.41	60.99	0.21	0.17	8.9%	14622.53	14721.69	6.03%	6.04%	-0.7%
Food & Allied Product	24.56	23.23	0.08	0.07	5.7%	23990.19	24095.86	9.89%	9.89%	-0.4%
Insurance	5.25	7.84	0.02	0.02	-33.0%	6755.59	6812.81	2.78%	2.80%	-0.8%
IT	3.05	3.19	0.01	0.01	-4.6%	910.21	908.18	0.38%	0.37%	0.2%
Jute	0.32	0.49	0.00	0.00	-34.9%	79.81	79.27	0.03%	0.03%	0.7%
Miscellaneous	13.00	12.24	0.04	0.03	6.2%	8210.33	8219.94	3.38%	3.37%	-0.1%
Mutual Fund	2.00	2.27	0.01	0.01	-11.8%	3559.52	3576.36	1.47%	1.47%	-0.5%
NBFI	13.45	25.92	0.04	0.07	-48.1%	7788.54	7751.24	3.21%	3.18%	0.5%
Paper & Printing	0.38	0.49	0.00	0.00	-22.5%	146.91	148.24	0.06%	0.06%	-0.9%
Pharmaceuticals & Chemicals	30.88	33.83	0.10	0.10	-8.7%	40758.78	40910.59	16.80%	16.80%	-0.4%
Power & Energy	77.44	97.92	0.25	0.28	-20.9%	35064.12	35280.88	14.45%	14.48%	-0.6%
Service & Real Estate	3.51	8.58	0.01	0.02	-59.1%	1725.41	1745.45	0.71%	0.72%	-1.1%
Tannery	5.04	2.09	0.02	0.01	140.9%	2212.85	2196.44	0.91%	0.90%	0.7%
Telecommunication	2.59	7.93	0.01	0.02	-67.3%	35881.93	36170.13	14.79%	14.85%	-0.8%
Textile	25.52	19.17	0.08	0.05	33.1%	7292.87	7260.24	3.01%	2.98%	0.4%
Travel & Leisure	5.84	10.67	0.02	0.03	-45.2%	1999.50	2011.49	0.82%	0.83%	-0.6%

MC= Market Capitalization, % Δ in Turnover= change in turnover from last day, % Δ in MC= change in Market cap from last day

Index Movers		Index Shakers	Sector wise P/E (Fd.)			
BRACBANK		GP	Bank	9.52	NBFI	17.94
DOREENPWR		UPGDCL	Cement	25.15	Paper & Printing	98.94
BANKASIA		BSRMLTD	Ceramics	34.76	Pharmaceuticals & Chemicals	25.03
DUTCHBANGL		SQURPHARMA	Engineering	29.83	Power & Energy	15.67
LINDEBD		BATBC	Food & Allied Product	25.41	Service & Real Estate	28.71
BBS		SPCL	Insurance	12.87	Tannery	35.49
DBH		RENATA	IT	49.00	Telecommunication	21.69
PLFSL		BSRMSTEEL	Jute	410.79	Textile	16.65
SPPCL		OLYMPIC	Miscellaneous	28.11	Travel & Leisure	17.34
AFTABAUTO		CITYBANK				

## Important News

### Company News:

BSC: Q3 Financials: (Q3 Un-audited): EPS was Tk. 2.55 for January-March, 2016 as against Tk. 8.38 for January-March, 2015. EPS was Tk. 8.00 for July, 2015-March, 2016 as against Tk. 1.97 for July, 2014-March, 2015. NAV per share was Tk. 610.83 as of March 31, 2016 and Tk. 602.84 as of June 30, 2015.

IFIC: Q1 Financials:(Q1 Un-audited): Consolidated EPS was Tk. 0.58 for January-March, 2016 as against Tk. 0.70 for January-March, 2015. Consolidated NOCFPS was Tk. 6.70 for January-March, 2016 as against Tk. (4.54) for January-March, 2015. Consolidated NAV per share was Tk. 25.07 as of March 31, 2016 and Tk. 26.39 as of March 31, 2015.

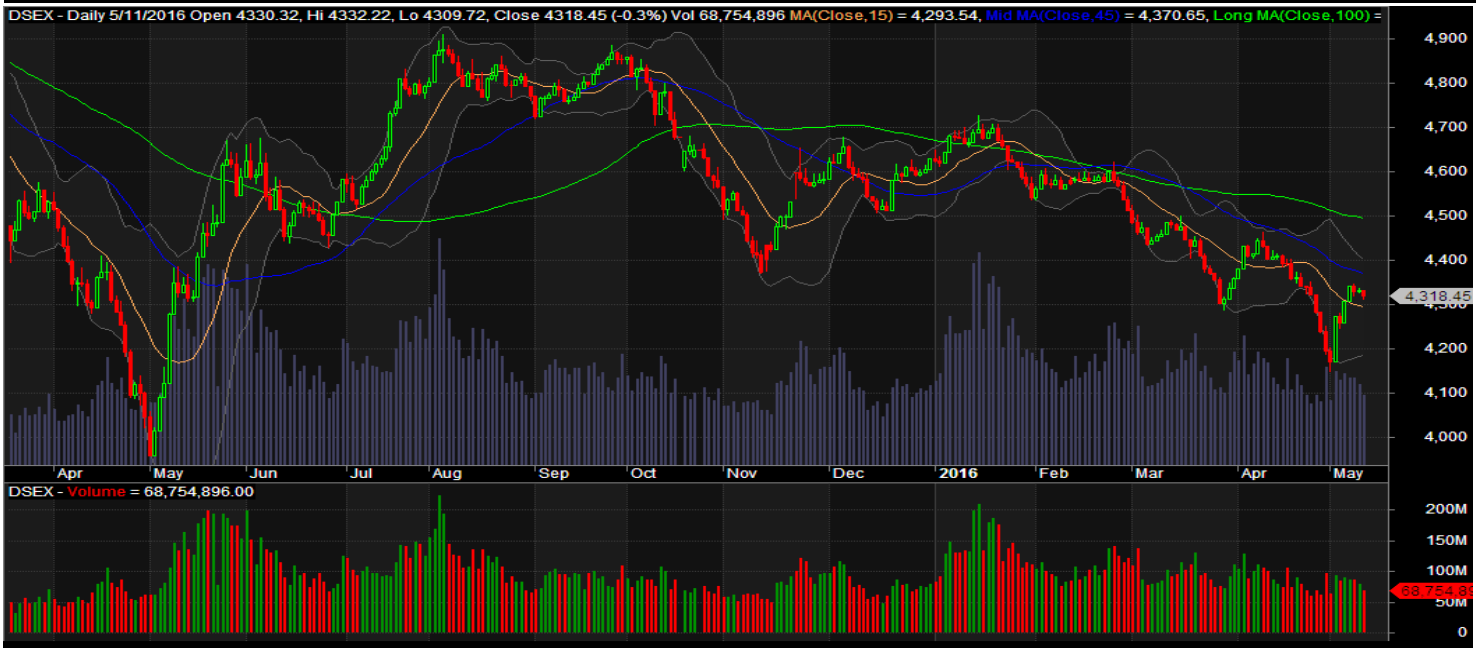
NITOLINS: Q1 Financials: (Q1 Un-audited): EPS was Tk. 0.58 for January-March, 2016 as against Tk. 1.25 for January-March, 2015. NOCFPS was Tk. 0.81 for January-March, 2016 as against Tk. 1.43 for January-March, 2015. NAV per share was Tk. 24.56 as of March 31, 2016 and Tk. 24.30 as of March 31, 2015.

## Recent Dividend Declaration

Ticker	Dividend	Record Date
Beximco Pharmaceuticals Limited	10% C & 5% B	12.05.2016
Bangladesh Export Import Co. Ltd..	15% B	12.05.2016
Dragon Sweater and Spinning Limited	15% B	12.05.2016
EXIM Bank of Bangladesh Ltd.	12% C	15.05.2016
Brae Bank Limited	25% C	12.05.2016

Note: C= cash Dividend, B= Bonus Dividend, R=Right, N/A=NotApplicable

## DSEX Technical Graph for last one year



### MTB CAPITAL LIMITED

Corporate head office

Level: 3, MTB Tower, 111, Kazi Nazrul Islam Avenue, Dhaka

Phone: 8321714, Fax: 8321543

[www.mtbcap.com](http://www.mtbcap.com)

*A Mutual Trust Bank Company*

*you can invest with us*

### Disclaimer

This report has been prepared by the MTB Capital Limited (MTBCL) on the basis of available information in the market and it is provided for the purposes only. It is not to be used as an offer for buying or selling any instruments. If anyone takes any action relying on this information, shall be responsible solely by him/her self for any

consequences. The best care has been taken to make the report informative. MTBCL doesn't give any warrant or guarantee that the report or such information is fully accurate. The information that are provided here is the exclusive property of MTBCL and can not be distributed without prior consent of MTBCL.

---