

Today's Market Overview

Tuesday, February 16, 2016

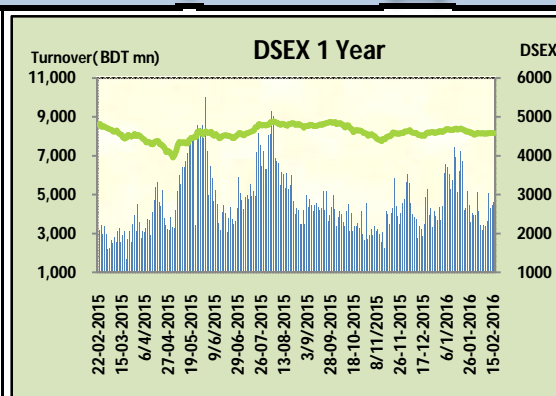


DSEX	4,578.86	-0.13%	Issues Traded	↑ Advanced 154	↓ Declined 115	↔ Unchanged 54
Turnover (BDT mn)	4,608.11	3.4%				

Market observed marginal loss with slightly improved turnover. The premier bourse of the nation opened with a positive mood and sustained almost first session with notable turnover but the situation started to change soon after the midsession and sellers domination continued like the previous day. Finally market ended with red points, though the turnover improved but most of the investors remained outside the fence. Notable concentration occurred in Power, NBFI & Cement sector. Most of the major sectors performed marginally. Turnovers somehow succeed to cross the 4.5 billion mark after two days. Interestingly most of the turnover took place in big paid up stocks which vibrated the active investors to be with the market. Other two indices DS30 & DSES the shariah based index both performed poor. IT was the best gainer followed by Insurance and Cement While Service was the worst loser followed by Miscellaneous & Engineering.

The general gauge DSEX ended at 4578.86 with a decline of -0.1% which cut only 6.19 points from the broad DSEX. The Turnover advanced slightly by +3.4% which was 151 Million BDT healthier than that of previous day and finally finished the mark at 4608 million BDT. A total of 154 issues advanced with 115 declined and 54 remained unchanged. Sectors that improved were: Cement (+0.5%) Insurance (+1.8%) IT (+3.0%) NBFI (+0.2%) Power (+0.4%) Textiles (+0.3%) Paper (+0.7%) Mutual Fund (0.6%) & Sectors that declined were: Bank (-0.6%) Engineering (-0.9%) Food (-0.2%) Pharmaceuticals (-0.4%) Telecom (-0.1%) Service (-1.2%)

BSRMLTD topped in the Volume chart with a turnover of 35.71 BDT crore. RELIANCE ranked top gainer chart with a price hike of +11.1% and ZEALBANGLA topped in the loser chart with a decline of -7.8% from its prevailing price. UPGDCL led the way in the index mover chart while OLYMPIC played the shatter part.



Index Scenario				Market Highlights					
	INDEX	Change	% Changes	DSEX 52 week H/L	4992/3960	Market P/E (LTM)	14.73		
	DSEX	4578.86	(6.19)	-0.1%	DSEX Week H/L	4585/4573	M.Cap (mn)	3179921.8	
	DSES	1118.87	(5.70)	-0.5%	Group Performances				
	DS30	1752.73	(8.74)	-0.5%	Category	Mkt Cap (mn.)	Δ % M.Cap	Turnover BDT (mn)	Δ % Turnover
Turnover Scenario				Group A	2,462,215.06	-0.1%	3,978.30	3.8%	
Today's Turnover (mn.)	Change In BDT (mn.)	% Change		Group B	12,112.63	0.3%	68.76	-24.0%	
4608.11	151	3.4%		Group N	35,504.28	1.7%	414.17	25.9%	
				Group Z	32,249.71	-0.7%	48.61	-11.3%	

Top Ten Volume (in BDT. crore)										
Stock	TT	YT	AT	% Δ in Turnover	TT/AT	CP	YP	% Δ P	Number of shares	Public Holding
BSRMLTD	35.71	43.02	9.85	-17.0%	262.5%	162.6	168.7	-3.6%	173,351,038.0	9%
UPGDCL	27.69	17.39	12.89	59.2%	114.8%	166	161.6	2.7%	362,944,698.6	5%
AMANFEED	14.79	10.40	3.67	42.3%	303.3%	53.3	49.3	8.1%	80,000,000.0	23%
BXPHARMA	13.02	22.12	15.10	-41.2%	-13.8%	93.5	94.5	-1.1%	386,244,234.6	50%
AFCAGRO	11.91	4.38	1.70	172.2%	601.8%	67.5	66	2.3%	63,250,000.0	57%
SQURPHARMA	11.28	19.76	12.13	-42.9%	-7.0%	267.7	269.7	-0.7%	623,586,546.0	9%
PREMIERCCEM	9.88	4.58	3.17	115.6%	212.0%	90	86	4.7%	105,450,000.0	10%
IFADAUTOS	8.54	8.55	7.41	-0.1%	15.3%	94.7	95.8	-1.1%	149,500,000.0	17%
SAPORTL	8.52	NT	3.63	NM	134.9%	45.2	46.3	-2.4%	171,762,330.6	24%
ACTIVEFINE	8.04	2.04	3.00	294.5%	168.3%	56.8	56	1.4%	99,360,000.0	77%

TT= Today's Turnover in crore, YT= Yesterday's Turnover in Crore, AT= Average of Last 20 day's Turnover, CP= Current Price, YP= Yesterday's Price, % Δ P= percentage change in price

Top Ten Gainer						Top Ten Loser					
Stock	CP	YP	AP	% Δ P	% Δ in P from AP	Stock	CP	YP	AP	% Δ P	% Δ in P from AP
RELIANCINS	51.9	46.7	49.885	11.1%	4.0%	ZEALBANGLA	5.90	6.40	6.43	-7.8%	-8.2%
FUWANGCER	16.9	15.5	14.5	9.0%	16.6%	SHYAMPUSUG	6.20	6.60	6.55	-6.1%	-5.3%
FAREASTLIF	78.2	72	66.355	8.6%	17.9%	LIBRAINFU	501.40	531.90	406.44	-5.7%	23.4%
AMANFEED	53.3	49.3	45.135	8.1%	18.1%	7THICB	109.20	115.00	113.99	-5.0%	-4.2%
SONARBAINS	15.5	14.5	15.27	6.9%	1.5%	GEMINISEA	626.30	652.70	441.03	-4.0%	42.0%
SALAMCRST	30.2	28.4	28.695	6.3%	5.2%	EASTRNLUB	597.60	622.40	623.50	-4.0%	-4.2%
CMCKAMAL	17.4	16.4	16.08	6.1%	8.2%	PEOPLESINS	15.80	16.40	16.49	-3.7%	-4.2%
RUPALILIFE	37.8	35.7	34.395	5.9%	9.9%	BSRMLTD	162.60	168.70	127.21	-3.6%	27.8%
ITC	54.9	51.9	64.97	5.8%	-15.5%	APEXFOODS	126.50	131.10	123.17	-3.5%	2.7%
MERCINS	13.6	12.9	13.25	5.4%	2.6%	ILFSL	9.20	9.50	9.90	-3.2%	-7.0%

AP= Average Price of last 20 day,% Δ in P from AP= percentage change in price from the 20-day average price

Industry /Sectors overview (Amounts in BDT. Crore)											
Sector	Trade Volume		MKT Turnover %		% Δ in Turnover	Market Capitalization		% of Total MC		% Δ in MC	
	Today	Yesterday	Today	Yesterday		Today	Yesterday	Today	Yesterday		
Bank	29.03	28.96	0.07	0.07	0.2%	39359.06	39597.87	15.51%	15.58%	-0.6%	
Cement	20.10	14.58	0.05	0.03	37.8%	14849.63	14769.53	5.85%	5.81%	0.5%	
Ceramics	9.42	6.84	0.02	0.02	37.8%	2758.48	2754.26	1.09%	1.08%	0.2%	
Engineering	93.06	103.70	0.21	0.24	-10.3%	16021.73	16170.40	6.31%	6.36%	-0.9%	
Food & Allied Product	17.77	26.10	0.04	0.06	-31.9%	25178.46	25237.75	9.92%	9.93%	-0.2%	
Insurance	18.41	14.72	0.04	0.03	25.1%	7498.85	7365.61	2.95%	2.90%	1.8%	
IT	7.16	7.94	0.02	0.02	-9.8%	980.84	952.15	0.39%	0.37%	3.0%	
Jute	0.58	0.44	0.00	0.00	32.1%	82.65	83.44	0.03%	0.03%	-0.9%	
Miscellaneous	27.75	22.27	0.06	0.05	24.6%	8361.85	8435.32	3.29%	3.32%	-0.9%	
Mutual Fund	2.87	3.58	0.01	0.01	-19.7%	3660.35	3638.94	1.44%	1.43%	0.6%	
NBFI	27.18	19.68	0.06	0.05	38.1%	8705.57	8684.53	3.43%	3.42%	0.2%	
Paper & Printing	0.60	0.66	0.00	0.00	-8.2%	179.14	177.81	0.07%	0.07%	0.7%	
Pharmaceuticals & Chemicals	64.40	67.58	0.15	0.16	-4.7%	42323.44	42508.84	16.67%	16.73%	-0.4%	
Power & Energy	64.15	50.27	0.15	0.12	27.6%	33225.04	33102.48	13.09%	13.02%	0.4%	
Service & Real Estate	14.75	7.97	0.03	0.02	85.1%	1809.71	1832.44	0.71%	0.72%	-1.2%	
Tannery	0.89	2.46	0.00	0.01	-63.8%	2366.30	2381.31	0.93%	0.94%	-0.6%	
Telecommunication	5.19	6.41	0.01	0.02	-18.9%	36375.98	36407.93	14.33%	14.33%	-0.1%	
Textile	35.00	35.63	0.08	0.08	-1.8%	8053.61	8028.76	3.17%	3.16%	0.3%	
Travel & Leisure	2.87	4.32	0.01	0.01	-33.4%	2038.21	2024.06	0.80%	0.80%	0.7%	

MC= Market Capitalization, % Δ in Turnover= change in turnover from last day, % Δ in MC= change in Market cap from last day

Index Movers	Index Shakers	Sector wise P/E (Fd.)			
UPGDCL	OLYMPIC	Bank	9.02	NBFI	41.85
BATBC	SQURPHARMA	Cement	31.46	Paper & Printing	100.84
POWERGRID	BSRMLTD	Ceramics	37.26	Pharmaceuticals & Chemicals	28.59
CITYBANK	BERGERPBL	Engineering	58.86	Power & Energy	16.45
PREMIERCEM	ISLAMIBANK	Food & Allied Product	31.88	Service & Real Estate	33.10
IDLC	BSRMSTEEL	Insurance	13.94	Tannery	54.19
FAREASTLIF	BXPHARMA	IT	99.50	Telecommunication	27.13
AMANFEED	DBH	Jute	169.69	Textile	18.04
RELIANCINS	PUBALIBANK	Miscellaneous	36.51	Travel & Leisure	22.81
ITC	UCB				

Important News

Company News:

IPDC: Dividend Declaration: The Board of Directors has recommended 20% stock dividend for the year ended on 31.12.2015. Date of AGM: 30.03.16, Time: 9:00 AM, Venue: Trust Milonayaton, 545 old Air Port, Shahid Jahangir Gate, Dhaka Cantonment, Dhaka. Record Date: 08.03.16. The Company has also reported EPS of Tk. 1.90 NAV per share of Tk. 19.60 and NOCFPS of Tk. 0.97 for the year ended on 31.12.2015 as against Tk. 1.31 (restated), Tk. 18.15 (restated) and Tk. (0.12) (restated) respectively for the year ended on 31.12.2014.

RELIANCINS: Dividend Declaration: The Board of Directors has recommended 15% cash dividend and 15% stock dividend for the year ended on December 31, 2015. Date of AGM: 31.03.2016, Time: 11:00 AM, Venue: La-Vita Hall, Lake Shore Hotel, House No. 46, Road No. 41, Gulshan-2, Dhaka-1212. Record date: 08.03.2016. The Company has also reported Net Profit after Tax of Tk. 316.67 million, EPS of Tk. 4.61, NAV per share of Tk. 60.49 and NOCFPS of Tk. 2.88 for the year ended on December 31, 2015.

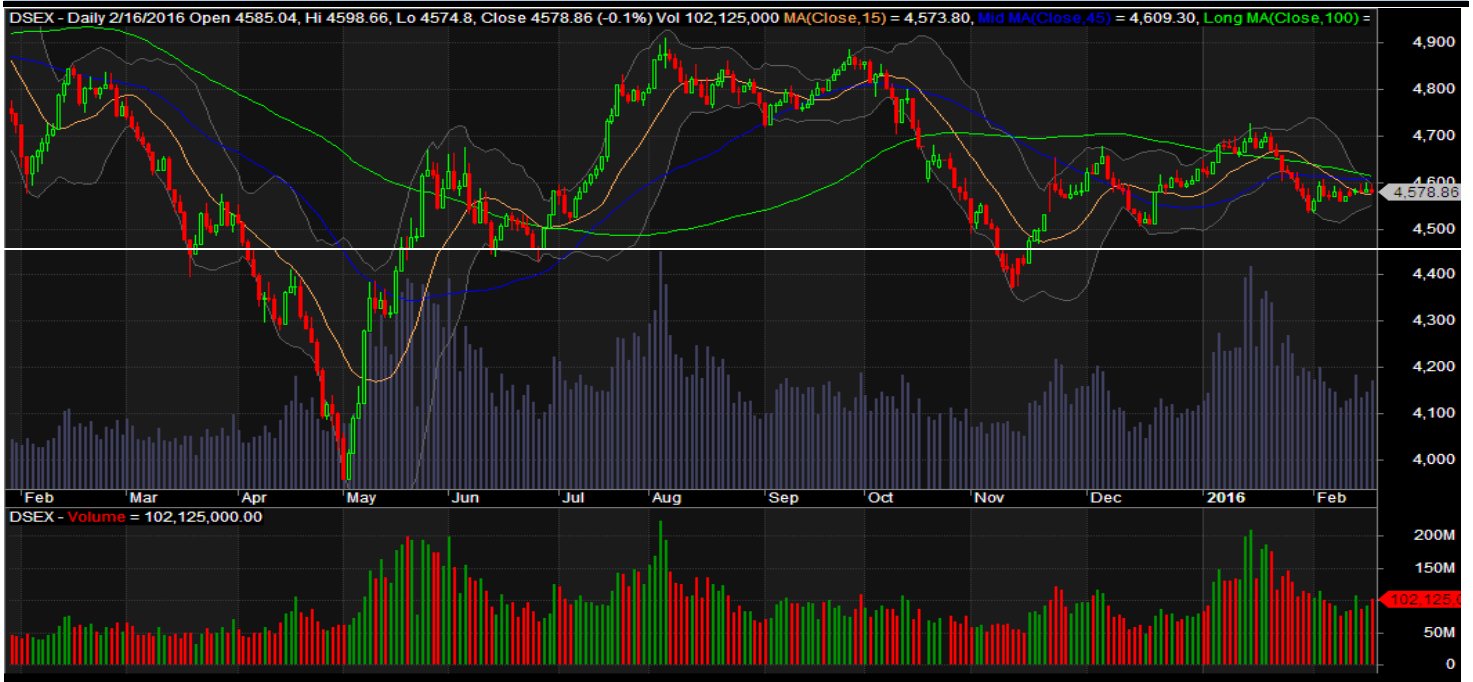
Recent Dividend Declaration

Ticker	Dividend	Record Date
--------	----------	-------------

Marico	100%C	15.02.2016
--------	-------	------------

Note: C= cash Dividend, B= Bonus Dividend, R=Right, N/A=NotApplicable

DSEX Technical Graph for last one year



MTB CAPITAL LIMITED

Corporate head office

Level: 3, MTB Tower, 111, Kazi Nazrul Islam Avenue, Dhaka

Phone: 8321714, Fax: 8321543

www.mtbcap.com

A Mutual Trust Bank Company

you can invest with us

Disclaimer

This report has been prepared by the MTB Capital Limited (MTBCL) on the basis of available information in the market and it is provided for the purposes only. It is not to be used as an offer for buying or selling any instruments. If anyone takes any action relying on this information, shall be responsible solely by him/her self for any consequences. The best care has been taken to make the report informative. MTBCL doesn't give any warrant or guarantee that the report or such information is fully accurate. The information that are provided here is the exclusive property of MTBCL and can not be distributed without prior consent of MTBCL.