

Today's Market Overview

Wednesday, December 02, 2015

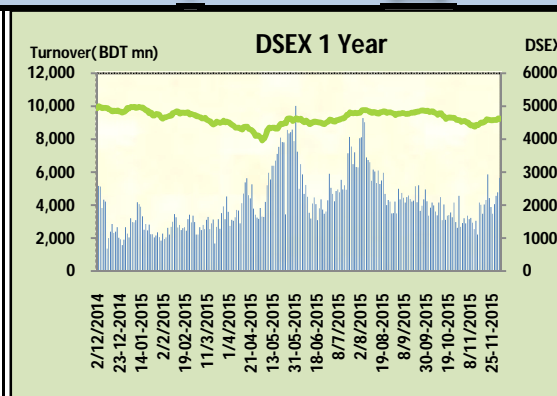


DSEX	4,619.51	-0.05%	Issues Traded	↑ Advanced 125	↓ Declined 147	↔ Unchanged 46
Turnover (BDT mn)	5,645.43	18.0%				

Market observed a marginal fall after four trading sessions with a heavily improved turnover. The premier bourse of the nation opened with an enthusiastic mood like previous day and gained almost 20 points with great volume in the first session. Soon after the midsession market went for picking quick gain and closed in flat. Market was vibrant as shifting among sectors occurred throughout the session. Investors shown their maturity and increased their participation. Turnover broke the 5.5 billion mark after six trading sessions. Engineering continued concentration like previous day, Ceramics, Miscellaneous & Pharmaceuticals joined with it today. Strong buoyancy remained in Power, Pharmaceuticals & Telecom. Bank, NBFI & Cement failed to contribute. Small cap stocks were not in attraction today. Among the other two indices DS30 put some gain while DSES the shariah based index failed to put gain. Ceramics was the best gainer followed by Engineering & Service. Paper was the worst loser followed by Jute & Textiles

The general gauge DSEX ended at 4619.51 with a decline of -0.04% which cut 2.16 points from the broad DSEX. The Turnover advanced heavily by +18.0% which was 861 Million BDT healthier than that of previous day and finally finished the mark at 5645.43 million BDT. A total of 125 issues advanced with 147 declined and 46 remained unchanged. Sectors that improved were: Ceramics (+2.3%) Engineering (+2.7%) Insurance (+0.5%) NBFI (+0.5%) Telecom (+0.2%) Service (+1.8%) Miscellaneous (+0.8%) Mutual Fund (+0.7%) & sectors that declined were: Bank (-0.9%) Cement (-0.5%) Power (-0.4%) Textiles (-0.4%)

BSRMSTEEL topped in the Volume chart with a turnover of 38.47 BDT crore. DSHGARMENTS ranked top gainer chart with a price hike of +9.4% and SAMATALET topped in the loser chart with a decline of -8.5% from its prevailing price. BSRMSTEEL led the way in the index mover chart while TITASGAS played the shatter part.



Index Scenario				Market Highlights				
INDEX	Change	% Changes		DSEX 52 week H/L	4992/3960	Market P/E (LTM)	15.02	
DSEX	4619.51	(2.16)	0.0%	DSEX Week H/L	4622/4573	M.Cap (mn)	3189321.6	
DSES	1115.35	(0.45)	0.0%	Group Performances				
DS30	1757.16	2.39	0.1%	Category	Mkt Cap (mn.)	Δ % M.Cap	Turnover BDT (mn)	Δ % Turnover
Turnover Scenario				Group A	2,477,052.88	0.1%	4,807.71	25.0%
Today's Turnover (mn.)	Change In BDT (mn.)	% Change		Group B	12,927.59	-0.3%	81.09	12.6%
5645.43	861	18.0%		Group N	35,926.75	1.3%	619.50	0.2%
				Group Z	23,473.75	-0.1%	34.03	-1.6%

Top Ten Volume (in BDT. crore)										
Stock	TT	YT	AT	% Δ in Turnover	TT/AT	CP	YP	% Δ P	Number of shares	Public Holding
BSRMSTEEL	38.47	17.76	8.08	116.6%	376.1%	102.5	97	5.7%	341,775,000.0	13%
ACTIVEFINE	19.60	5.50	3.49	256.1%	462.1%	59.9	58.5	2.4%	99,360,000.0	77%
BXPHERMA	18.49	27.16	12.43	-31.9%	48.8%	80	79.5	0.6%	386,244,234.6	50%
IFADAUTOS	17.61	29.48	20.16	-40.3%	-12.7%	106.4	107.3	-0.8%	149,500,000.0	17%
AMANFEED	17.14	7.74	4.91	121.4%	249.3%	52.7	48.2	9.3%	80,000,000.0	23%
SQURPHARMA	14.33	18.25	10.05	-21.5%	42.6%	258.2	258.1	0.0%	623,586,546.0	9%
SAIFPOWER	14.28	10.87	13.67	31.3%	4.4%	71	72.1	-1.5%	91,571,140.2	19%
KPCL	13.51	5.18	5.10	160.8%	164.7%	74.2	73.6	0.8%	361,284,710.0	13%
FARCHEM	13.50	5.48	5.69	146.2%	137.1%	33.5	32	4.7%	136,547,347.5	12%
RSRMSTEEL	11.10	11.79	4.06	-5.8%	173.6%	53.1	53.6	-0.9%	78,624,000.0	41%

TT= Today's Turnover in crore, YT= Yesterday's Turnover in Crore, AT= Average of Last 20 day's Turnover, CP= Current Price, YP= Yesterday's Price, % Δ P= percentage change in price

Top Ten Gainer						Top Ten Loser					
Stock	CP	YP	AP	% Δ P	% Δ in P from AP	Stock	CP	YP	AP	% Δ P	% Δ in P from AP
DSHGARME	153	139.8	135.73	9.4%	12.7%	SAMATALETH	23.60	25.80	23.11	-8.5%	2.1%
ISNLTD	15.1	13.8	12.11	9.4%	24.7%	SAVAREFR	43.60	46.50	44.84	-6.2%	-2.8%
AMANFEED	52.7	48.2	46.695	9.3%	12.9%	MALEKSPIN	17.00	17.80	16.53	-4.5%	2.8%
FBFIF	5.9	5.5	5.88	7.3%	0.3%	EXIMISTMF	4.90	5.10	5.43	-3.9%	-9.7%
BBS	39.5	37.1	36.285	6.5%	8.9%	AL-HAJTEX	96.20	100.00	105.79	-3.8%	-9.1%
AFTABAUTO	60.2	56.7	53.17	6.2%	13.2%	HAKKANIPUL	41.50	43.10	42.15	-3.7%	-1.5%
BSRMSTEEL	102.5	97	91.805	5.7%	11.6%	1STPRIMFMF	10.80	11.20	10.08	-3.6%	7.1%
BSRMSTEEL	102.5	97	91.805	5.7%	11.6%	CENTRALINS	16.30	16.90	17.31	-3.6%	-5.8%
ATLASBANG	152.1	144.2	136.04	5.5%	11.8%	ZEALBANGLA	6.60	6.80	6.87	-2.9%	-3.9%
IPDC	28.9	27.4	27.145	5.5%	6.5%	HRTEX	20.10	20.70	20.93	-2.9%	-3.9%

AP= Average Price of last 20 day,% Δ in P from AP= percentage change in price from the 20-day average price

Industry /Sectors overview (Amounts in BDT. Crore)											
Sector	Trade Volume		MKT Turnover %		% Δ in Turnover	Market Capitalization		% of Total MC		% Δ in MC	
	Today	Yesterday	Today	Yesterday		Today	Yesterday	Today	Yesterday		
Bank	32.04	44.65	0.06	0.10	-28.2%	40699.30	41061.34	15.98%	16.14%	-0.9%	
Cement	17.27	14.22	0.03	0.03	21.4%	15441.03	15512.66	6.06%	6.10%	-0.5%	
Ceramics	7.60	3.43	0.01	0.01	121.4%	2706.49	2646.32	1.06%	1.04%	2.3%	
Engineering	152.27	121.88	0.28	0.27	24.9%	16210.55	15791.74	6.37%	6.21%	2.7%	
Food & Allied Product	18.10	14.46	0.03	0.03	25.2%	23989.81	23984.13	9.42%	9.43%	0.0%	
Insurance	12.80	10.66	0.02	0.02	20.1%	7018.21	6981.88	2.76%	2.74%	0.5%	
IT	2.48	1.70	0.00	0.00	46.5%	494.74	493.82	0.19%	0.19%	0.2%	
Jute	1.40	2.48	0.00	0.01	-43.3%	89.59	91.55	0.04%	0.04%	-2.1%	
Miscellaneous	32.75	20.95	0.06	0.05	56.3%	8111.20	8047.60	3.19%	3.16%	0.8%	
Mutual Fund	9.20	4.44	0.02	0.01	107.5%	3535.49	3510.93	1.39%	1.38%	0.7%	
NBFI	21.29	24.13	0.04	0.05	-11.8%	8293.52	8254.93	3.26%	3.24%	0.5%	
Paper & Printing	0.96	1.27	0.00	0.00	-24.3%	174.53	179.76	0.07%	0.07%	-2.9%	
Pharmaceuticals & Chemicals	91.72	79.02	0.17	0.17	16.1%	41016.05	41010.39	16.11%	16.12%	0.0%	
Power & Energy	69.99	45.51	0.13	0.10	53.8%	34260.85	34381.38	13.46%	13.51%	-0.4%	
Service & Real Estate	21.79	15.65	0.04	0.03	39.2%	2046.81	2011.61	0.80%	0.79%	1.8%	
Tannery	2.00	2.08	0.00	0.00	-3.8%	2387.01	2390.72	0.94%	0.94%	-0.2%	
Telecommunication	13.45	11.67	0.02	0.03	15.2%	38299.28	38210.74	15.04%	15.02%	0.2%	
Textile	31.68	28.00	0.06	0.06	13.1%	7782.89	7818.56	3.06%	3.07%	-0.5%	
Travel & Leisure	7.06	8.10	0.01	0.02	-12.9%	2069.67	2050.86	0.81%	0.81%	0.9%	

MC= Market Capitalization, % Δ in Turnover= change in turnover from last day, % Δ in MC= change in Market cap from last day

Index Movers	Index Shakers	Sector wise P/E (Fd.)			
BSRMSTEEL	TITASGAS	Bank	9.44	NBFI	39.57
GP	LAFSURCEML	Cement	34.21	Paper & Printing	63.31
RAKCERAMIC	BRACBANK	Ceramics	43.58	Pharmaceuticals & Chemicals	27.93
MJLBD	RENATA	Engineering	30.25	Power & Energy	15.88
BSRMLTD	PRIMEBANK	Food & Allied Product	30.76	Service & Real Estate	42.02
DESCO	OLYMPIC	Insurance	14.58	Tannery	49.84
SPCL	UPGDCL	IT	22.25	Telecommunication	27.25
SAPORTL	ALARABANK	Jute	63.59	Textile	18.18
BATBC	SUMITPOWER	Miscellaneous	35.05	Travel & Leisure	18.25
AMANFEED	HEIDELBCEM				

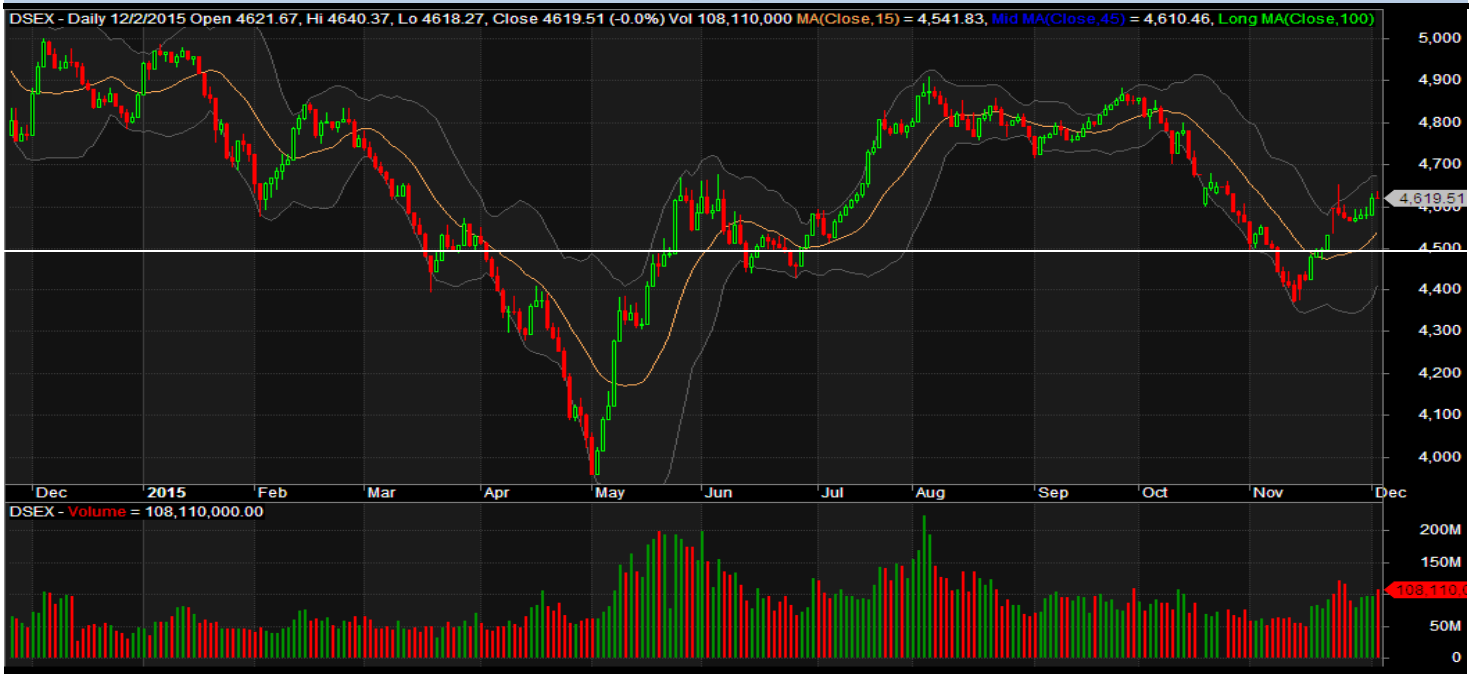
Important News**Company News:**

LRGLOBMF1: Dividend Declaration: The Trustee of the Fund has declared 10% cash dividend for the year ended on September 30, 2015 considering previous Retained Earnings and Dividend Equalization Reserve. Record date: 23.12.2015. The Trustee of the Fund has reported Net Income of Tk. 250.91 million for the year ended on September 30, 2015

Recent Dividend Declaration

Ticker	Dividend	Record Date
Shahjibazar Power Co. Ltd.	28% C & 3% B	07.12.15
Aftab Automobiles	16% C	06.12.15
Knitting & Dyeing Industries I	5% C & 10% B	06.12.15
Meghna Petroleum Limited	105% C	22.12.15
Jamuna Oil Company Limited	100% C	28.12.15

Note: C= cash Dividend, B= Bonus Dividend, R=Right, N/A=NotApplicable

DSEX Technical Graph for last one year**MTB CAPITAL LIMITED**

Corporate head office

Level: 3, MTB Tower, 111, Kazi Nazrul Islam Avenue, Dhaka

Phone: 8321714, Fax: 8321543

www.mtbcap.com

A mutual Trust Bank Company

you can invest with US

Disclaimer

This report has been prepared by the MTB Capital Limited (MTBCL) on the basis of available information in the market and it is provided for the purposes only. It is not to be used as an offer for buying or selling any instruments. If anyone takes any action relying on this information, shall be responsible solely by him/her self for any consequences. The best care has been taken to make the report informative. MTBCL doesn't give any warrant or guarantee that the report or such information is fully accurate. The information that are provided here is the exclusive property of MTBCL and can not be distributed without prior consent of MTBCL.