

# Today's Market Overview

Sunday, November 08, 2015



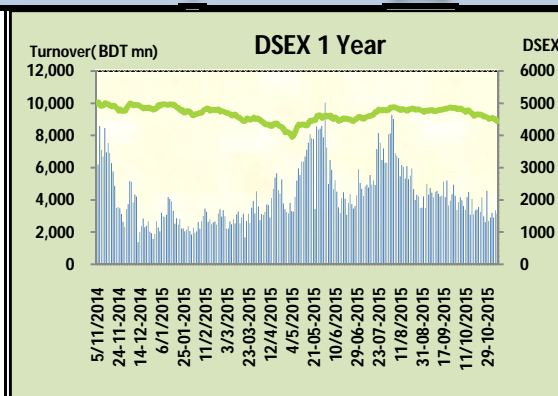
<b>DSEX</b>	4,443.15	<b>-1.31%</b>	<b>Issues Traded</b>	<b>Advanced</b>	<b>Declined</b>	<b>Unchanged</b>
<b>Turnover (BDT mn)</b>	3,147.18	<b>-6.19%</b>		64	226	23

Market continued the bearish run for the consecutive third days with a sluggish turnover as maximum numbers of investors remained outside of the market while active investors felt uncomfortable with existing holdings. The premier bourse of the nation opened the first day of this week with a very negative mood and it plunged more and more as the time progressed. DSEX dipped down below the 4500 mark which was lowest in last 86 days and lost almost 1.31%. Big paid up stock holders shown distrust on their holdings and thus actually created the market panic. All of the major sectors failed to get concentration except ceramics. Cement, Bank, Miscellaneous & Textiles bamboozled the investors most. Huge sale pressure in major & prominent sectors prevailed in the market though out the day.

Other two indices DS30 & DSES the shariah based index performed poor.

The general gauge DSEX ended at 4443.15 with a decline of -1.31% which cut 59.01 points from the broad DSEX. The Turnover Declined slightly by -6.2% which was 208 Million BDT poorer than that of previous day and finally finished the mark at 3147.18 million BDT. A total of 64 issues advanced with 226 declined and 23 remained unchanged. Sectors that improved were: Ceramics (+0.6%) & sectors that declined were: Bank (-1.5%) Cement (-2.4%) Engineering (-0.4%) Miscellaneous (-2.1%) NBFI (-1.2%) Power (-1.0%) Pharmaceuticals (-0.6%) Telecom (-0.7%) Travel (-2.4%) Textiles (-2.0%)

IFADAUTOS topped in the Volume chart with a turnover of 25.12 BDT crore. MODERNDYE ranked top gainer chart with a price hike of +7.4% and TALLUSPIN topped in the loser chart with a decline of -9.7% from its prevailing price. UPGDCL led the way in the index mover chart while LAFSURCEML played the shatter part.



Index Scenario				Market Highlights				
	INDEX	Change	% Changes	DSEX 52 week H/L	5334/3960	Market P/E (LTM)	14.39	
DSEX	4443.15	(59.01)	-1.3%	DSEX Week H/L	4552/4502	M.Cap (mn)	3117580.9	
DSES	1071.78	(12.70)	-1.2%	Group Performances				
DS30	1689.51	(21.85)	-1.3%	Category	Mkt Cap (mn.)	Δ % M.Cap	Turnover BDT (mn)	Δ % Turnover
Turnover Scenario				Group A	2,393,880.33	-1.1%	2,552.38	3.1%
Today's Turnover (mn.)	Change In BDT (mn.)	% Change		Group B	12,697.30	-2.3%	77.63	-7.8%
3147.18	(208)	-6.2%		Group N	30,712.74	1.2%	448.28	24.4%
				Group Z	23,009.01	-0.9%	48.79	150.1%

Top Ten Volume (in BDT. crore)										
Stock	TT	YT	AT	% Δ in Turnover	TT/AT	CP	YP	% Δ P	Number of shares	Public Holding
IFADAUTOS	25.12	23.07	9.99	8.9%	151.5%	125.7	123.8	1.5%	115,000,000.0	17%
KDSALTD	12.18	7.37	11.71	65.4%	4.0%	71.6	68.1	5.1%	52,000,000.0	21%
SAIFPOWER	11.56	7.01	5.76	64.9%	100.9%	68.9	67.7	1.8%	70,985,380.0	19%
QSMDDRYCELL	10.12	5.42	3.63	86.6%	178.5%	80.5	76.3	5.5%	36,799,488.0	54%
BSRMLTD	9.84	11.09	5.01	-11.2%	96.4%	127.9	126.9	0.8%	173,351,038.0	9%
UPGDCL	9.68	3.47	4.67	178.9%	107.2%	140.1	136.4	2.7%	362,944,698.6	5%
BSRMSTEEL	9.48	5.89	6.60	60.9%	43.7%	92.5	92.1	0.4%	341,775,000.0	13%
LAFSURCEML	8.56	7.84	16.49	9.2%	-48.1%	82.7	85	-2.7%	1,161,373,500.0	30%
BXPHERMA	7.64	4.42	12.10	73.0%	-36.8%	71.4	71.5	-0.1%	386,244,234.6	50%
TITASGAS	7.13	15.57	3.36	-54.2%	112.4%	62.1	63.5	-2.2%	989,221,831.0	25%

TT= Today's Turnover in crore, YT= Yesterday's Turnover in Crore, AT= Average of Last 20 day's Turnover, CP= Current Price, YP= Yesterday's Price, % Δ P= percentage change in price

Top Ten Gainer						Top Ten Loser					
Stock	CP	YP	AP	% Δ P	% Δ in P from AP	Stock	CP	YP	AP	% Δ P	% Δ in P from AP
MODERNDYE	111.9	104.2	125.09	7.4%	-10.5%	TALLUSPIN	17.70	19.60	22.45	-9.7%	-21.1%
IFIC1STMF	4.7	4.4	4.6	6.8%	2.2%	BDAUTOCA	26.00	28.50	34.51	-8.8%	-24.6%
DAFODILCOM	20.5	19.2	18.48	6.8%	10.9%	EASTLAND	19.50	21.00	21.93	-7.1%	-11.1%
ARAMIT	428.6	403.3	378.07	6.3%	13.4%	BANGAS	308.20	330.40	342.74	-6.7%	-10.1%
STANCERAM	54.2	51.1	49.3	6.1%	9.9%	DHAKABANK	18.20	19.40	20.25	-6.2%	-10.1%
QSMDDRYCELL	80.5	76.3	74.44	5.5%	8.1%	ATLASBANG	117.60	125.00	124.92	-5.9%	-5.9%
IMAMBUTTON	9.6	9.2	11.195	4.3%	-14.2%	GHAIL	19.60	20.80	24.17	-5.8%	-18.9%
IPDC	22.4	21.5	22.3	4.2%	0.4%	MITHUNKNIT	78.80	83.60	79.91	-5.7%	-1.4%
RANFOUNDRY	95.4	91.9	94.385	3.8%	1.1%	BDWELDING	15.60	16.50	18.85	-5.5%	-17.2%
KAY&QUE	17.3	16.7	17.215	3.6%	0.5%	SAMORITA	75.70	80.00	80.13	-5.4%	-5.5%

AP= Average Price of last 20 day,% Δ in P from AP= percentage change in price from the 20-day average price

Industry /Sectors overview (Amounts in BDT. Crore)											
Sector	Trade Volume		MKT Turnover %		% Δ in Turnover	Market Capitalization		% of Total MC		% Δ in MC	
	Today	Yesterday	Today	Yesterday		Today	Yesterday	Today	Yesterday		
Bank	17.68	14.50	0.06	0.05	21.9%	38986.26	39595.46	15.87%	15.94%	-1.5%	
Cement	10.47	10.98	0.03	0.04	-4.6%	15639.83	16017.67	6.37%	6.45%	-2.4%	
Ceramics	4.45	2.37	0.01	0.01	87.3%	2586.86	2571.87	1.05%	1.04%	0.6%	
Engineering	86.75	84.87	0.28	0.29	2.2%	14642.86	14703.47	5.96%	5.92%	-0.4%	
Food & Allied Product	11.34	7.98	0.04	0.03	42.1%	23670.30	23893.62	9.64%	9.62%	-0.9%	
Insurance	4.60	3.05	0.01	0.01	50.8%	6565.26	6669.46	2.67%	2.69%	-1.6%	
IT	2.94	0.91	0.01	0.00	223.0%	499.35	499.70	0.20%	0.20%	-0.1%	
Jute	2.21	0.42	0.01	0.00	426.6%	89.62	90.10	0.04%	0.04%	-0.5%	
Miscellaneous	15.78	14.87	0.05	0.05	6.1%	7880.37	8050.48	3.21%	3.24%	-2.1%	
Mutual Fund	7.03	8.96	0.02	0.03	-21.6%	3454.70	3500.51	1.41%	1.41%	-1.3%	
NBFI	7.86	6.66	0.03	0.02	18.0%	7571.33	7659.60	3.08%	3.08%	-1.2%	
Paper & Printing	0.78	1.16	0.00	0.00	-32.5%	184.85	189.23	0.08%	0.08%	-2.3%	
Pharmaceuticals & Chemicals	30.87	35.30	0.10	0.12	-12.5%	39910.26	40138.48	16.25%	16.16%	-0.6%	
Power & Energy	48.03	49.96	0.16	0.17	-3.9%	34883.86	35222.96	14.20%	14.18%	-1.0%	
Service & Real Estate	15.52	10.31	0.05	0.04	50.6%	1803.32	1808.06	0.73%	0.73%	-0.3%	
Tannery	1.70	1.74	0.01	0.01	-2.3%	2402.25	2429.03	0.98%	0.98%	-1.1%	
Telecommunication	7.35	7.36	0.02	0.03	-0.2%	35306.09	35567.11	14.37%	14.32%	-0.7%	
Textile	27.26	25.79	0.09	0.09	5.7%	7640.65	7796.57	3.11%	3.14%	-2.0%	
Travel & Leisure	6.07	4.87	0.02	0.02	24.6%	1946.29	1993.59	0.79%	0.80%	-2.4%	

MC= Market Capitalization, % Δ in Turnover= change in turnover from last day, % Δ in MC= change in Market cap from last day

Index Movers	Index Shakers	Sector wise P/E			
UPGDCL	LAFSURCEML	Bank	9.25	NBFI	35.01
POWERGRID	GP	Cement	34.47	Paper & Printing	57.34
RAKCERAMIC	BATBC	Ceramics	45.66	Pharmaceuticals & Chemicals	28.59
IFADAUTOS	TITASGAS	Engineering	28.84	Power & Energy	17.02
KDSALTD	BERGERPBL	Food & Allied Product	31.95	Service & Real Estate	43.18
PUBALIBANK	SQURPHARMA	Insurance	14.25	Tannery	50.78
BSRMLTD	PADMAOIL	IT	18.05	Telecommunication	23.80
NATLIFEINS	DHAKABANK	Jute	115.19	Textile	17.57
QSMDDRYCELL	SPCL	Miscellaneous	34.43	Travel & Leisure	12.93
ARAMIT	ISLAMIBANK				

## Important News

### Company News:

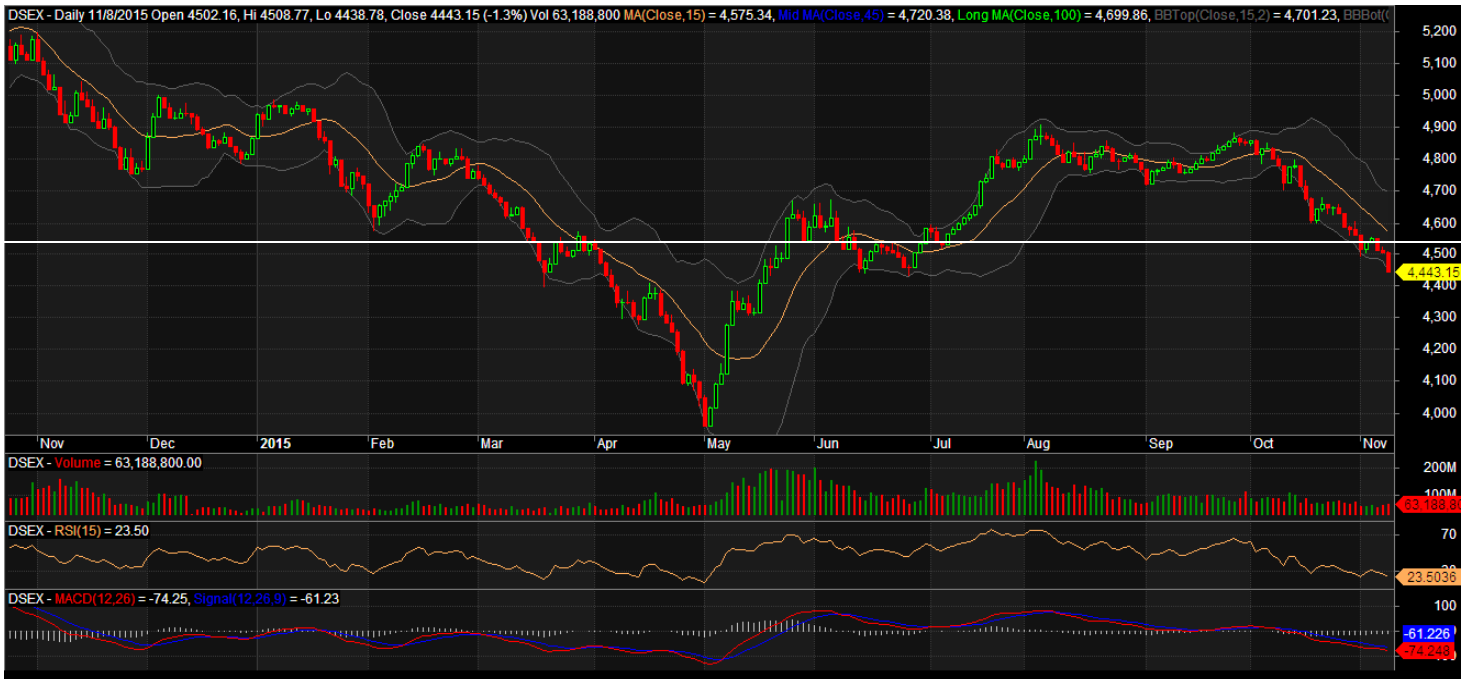
ORIONINFU: Dividend Declaration: The Board of Directors has recommended 13% cash dividend for the year ended on June 30, 2015. Date of AGM: 15.12.2015, Time: 10:30 AM, Venue: Officer's Club, 26 Baily Road, Ramna, Dhaka - 1000. Record date: 26.11.2015. The Company has also reported EPS of Tk. 1.39, NAV per share of Tk. 9.21 and NOCFPS of Tk. 3.41 for the year ended on June 30, 2015.

## Recent Dividend Declaration

Ticker	Dividend	Record Date
Paramount Textile Limited	16% C	15.11.2015
IFAD Autos Limited	7% C & 30% B	15.11.2015
Aamra technologies limited	10% C	16.11.2015
Anlimayam Deying Ltd.	10% C	15.11.15
Rahim Textile Mills Ltd.	40% B	17.11.15
CVO Petrochemical Refinery Limited	15% C & 25% B	15.11.15
Fu-Wang Foods Limited	15% B	19.11.15
Others PP Woven Bag Industries	15% B	23.11.15

Note: C= cash Dividend, B= Bonus Dividend, R=Right, N/A=NotApplicable

## DSEX Technical Graph for last one year



### MTB CAPITAL LIMITED

Corporate head office

Level: 3, MTB Tower, 111, Kazi Nazrul Islam Avenue, Dhaka

Phone: 8321714, Fax: 8321543

[www.mtbcap.com](http://www.mtbcap.com)

*A mutual Trust Bank Company*

*you can invest with US*

## Disclaimer

This report has been prepared by the MTB Capital Limited (MTBCL) on the basis of available information in the market and it is provided for the purposes only. It is not to be used as an offer for buying or selling any instruments. If anyone takes any action relying on this information, shall be responsible solely by him/her self for any consequences. The best care has been taken to make the report informative. MTBCL doesn't give any warrant or guarantee that the report or such information is fully accurate. The information that are provided here is the exclusive property of MTBCL and can not be distributed without prior consent of MTBCL.