

# Today's Market Overview

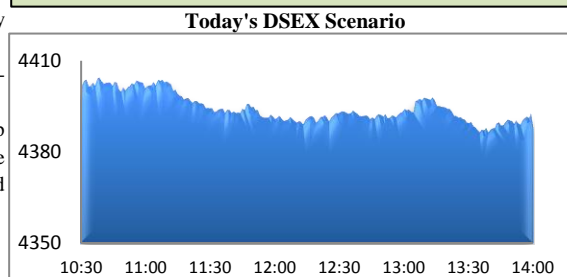
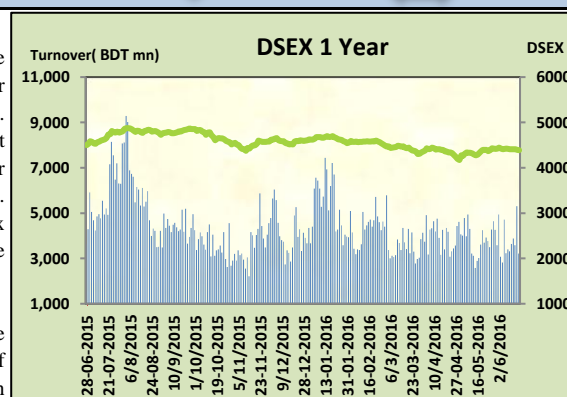


Sunday, June 19, 2016

<b>DSEX</b>	4,387.78	-0.17%	<b>Issues Traded</b>	<b>Advanced</b>	<b>Declined</b>	<b>Unchanged</b>
<b>Turnover (BDT mn)</b>	3,214.62	-39.41%		90	176	51

Market continued the losing streak for the consecutive two days with a very sluggish turnover. The premier bourse of the nation opened with a positive mood but portrayed the same pattern like the other days as the initial vibrant faded away with sale pressure in the midsession and sailed it to negative zone. Participation was very poor though market observed nearly 1000 million turnover within the first hour but sale pressure from peripheral opportunist created the negative vibe in the market moreover DSEX under 4400 level which also created a tension among the general investors and refrained to further participation. Most of the major sectors performed very poor. Other two indices DS30 & DSES the shariah based index both performed marginally poor. Cement was the best gainer followed by Travel & IT. Tannery was the best gainer followed by Miscellaneous & Pharmaceuticals.

The general gauge DSEX ended at 4387.78 with a Decline of -0.17% which cut only 7.50 points from the broad DSEX. The Turnover declined heavily by -39.4% which was 2091 Million BDT poorer than that of previous day and finally finished the mark at 3214.62 million BDT. A total of 90 issues advanced with 176 declined & 51 remained unchanged. Sectors that improved were: Pharmaceuticals (+0.12%) Tannery (+1.02%) Textiles (+0.11%) Miscellaneous (+0.19%) & Sectors that declined were: Bank (-0.34%) Cement (-1.17%) Ceramics (-0.66%) Engineering (-0.47%) Food (-0.73%) Insurance (-0.63%) IT (-0.73%) NBFI (-0.38%) Power (-0.09%) Service (-0.14%) Telecom (-0.32%) Travel (-1.06%). ACMELAB topped in the Volume chart with a turnover of 30.31 BDT crore. DULAMIACOT ranked top in gainer chart with a price hike of +10.0% and RUPALIBANK topped in the loser chart with a decline of -14.0% from its prevailing price. RENATA led the way in the index mover chart while BATBC played the shatter part.



## Index Scenario      Market Highlights

INDEX	Change	% Changes	DSEX 52 week H/L	4874/3960	Market P/E (LTM)	13.33		
DSEX	4387.78	(7.50)	-0.17%	DSEX Week H/L	4366/4427	M.Cap	3124236.1	
DSES	1080.75	(0.07)	-0.01%	<b>Group Performances</b>				
DS30	1724.34	(4.95)	-0.29%	Category	Mkt Cap (mn.)	Δ % M.Cap	Turnover BDT (mn)	Δ % Turnover

Turnover Scenario		
Today's Turnover (mn.)	Change In BDT (mn.)	% Change
3214.62	(2,091)	-39.4%

## Top Ten Volume (in BDT. crore)

Stock	TT	YT	AT	% Δ in Turnover	TT/AT	CP	YP	% Δ P	Number of shares	Public Holding
ACMELAB	30.31	56.64	46.52	-46.5%	-34.8%	116	119.7	-3.1%	274,244,180.0	9%
BBS	23.81	14.58	5.95	63.3%	299.8%	42.7	41.1	3.9%	362,944,698.6	5%
AMANFEED	10.27	10.18	6.56	0.9%	56.5%	83.4	81.6	2.2%	15,218,280.0	19%
QSMRDYCELL	10.20	10.01	4.15	1.9%	146.0%	86.8	82.4	5.3%	341,775,000.0	13%
OAL	10.10	10.82	5.96	-6.7%	69.3%	26.5	27.4	-3.3%	190,686,141.8	9%
ORIONINFU	9.23	8.21	5.66	2.5%	63.1%	74.6	72.9	2.3%	276,739,950.1	61%
DOREENPWR	8.41	12.79	7.92	-34.3%	6.2%	66.9	66.7	0.3%	137,132,037.0	19%
LAFSURCEML	7.46	10.39	15.77	-28.2%	-52.7%	73.1	74.5	-1.9%	190,417,988.2	27%
BSRMLTD	7.21	13.24	10.10	-45.5%	-28.6%	143.7	147.9	-2.8%	294,400,000.0	24%
SPCL	6.64	10.79	13.39	-38.5%	-50.4%	135.1	138.4	-2.4%	54,285,000.0	38%

TT= Today's Turnover in crore, YT= Yesterday's Turnover in Crore, AT= Average of Last 20 day's Turnover, CP= Current Price, YP= Yesterday's Price, % Δ P= percentage change in price

**Top Ten Gainer****Top Ten Loser**

Stock	CP	YP	AP	% Δ P	% Δ in P from AP	Stock	CP	YP	AP	% Δ P	% Δ in P from AP
DULAMIACOT	6.6	6	6.735	10.0%	-2.0%	RUPALIBANK	24.50	28.50	28.13	-14.0%	-12.9%
GHCL	39.2	35.8	35.51	9.5%	10.4%	PADMALIFE	24.70	26.80	27.08	-7.8%	-8.8%
KBPPWBIL	27.2	25.5	24.015	6.7%	13.3%	ZAHINTEX	20.80	22.00	21.61	-5.5%	-3.7%
LIBRAINFU	619.5	586.5	597.24	5.6%	3.7%	ZEALBANGLA	8.30	8.70	8.83	-4.6%	-6.0%
AGRANINS	13.8	13.1	13.445	5.3%	2.6%	8THICB	69.00	72.00	68.87	-4.2%	0.2%
QSMDDRYCELL	86.8	82.4	74.795	5.3%	16.1%	1JANATAMF	4.70	4.90	4.70	-4.1%	0.1%
TOSRIFA	25	23.8	21.2	5.0%	17.9%	BIFC	7.60	7.90	7.91	-3.8%	-3.9%
FEKDIL	26.2	25	24.88	4.8%	5.3%	PROVATHINS	10.90	11.30	11.52	-3.5%	-5.3%
BENGALWTL	51.7	49.5	49.605	4.4%	4.2%	FEDERALINS	8.60	8.90	9.20	-3.4%	-6.5%
BBS	42.7	41.1	37.905	3.9%	12.7%	OAL	26.50	27.40	26.26	-3.3%	0.9%

AP= Average Price of last 20 day,% Δ in P from AP= percentage change in price from the 20-day average price

**Industry /Sectors overview (Amounts in BDT. Crore)**

Sector	Trade Volume		MKT Turnover %		% Δ in Turnover	Market Capitalization		% of Total MC		% Δ in MC
	Today	Yesterday	Today	Yesterday		Today	Yesterday	Today	Yesterday	
Bank	18.48	25.38	0.06	0.07	-27.19%	37942.98	38072.53	15.31%	15.32%	-0.34%
Cement	9.92	14.85	0.03	0.04	-33.21%	14141.62	14308.76	5.71%	5.76%	-0.17%
Ceramics	1.46	2.61	0.00	0.01	-44.15%	2396.33	2412.37	0.97%	0.97%	-0.66%
Engineering	75.45	73.19	0.24	0.19	3.09%	14738.01	14807.74	5.95%	5.96%	-0.47%
Food & Allied Product	10.12	10.53	0.03	0.03	-3.90%	24246.73	24424.64	9.79%	9.83%	-0.73%
Insurance	3.66	4.50	0.01	0.01	-18.65%	6571.33	6613.19	2.65%	2.66%	-0.63%
IT	3.48	4.69	0.01	0.01	-25.87%	933.67	940.52	0.38%	0.38%	-0.73%
Jute	0.28	0.20	0.00	0.00	42.57%	79.04	79.08	0.03%	0.03%	-0.05%
Miscellaneous	23.81	27.69	0.08	0.07	-14.01%	8430.70	8414.94	3.40%	3.39%	0.19%
Mutual Fund	2.59	3.38	0.01	0.01	-23.45%	3693.13	3707.35	1.49%	1.49%	-0.38%
NBFI	6.46	7.12	0.02	0.02	-9.23%	7435.35	7463.99	3.00%	3.00%	-0.38%
Paper & Printing	0.20	0.71	0.00	0.00	-71.28%	151.87	152.46	0.06%	0.06%	-0.39%
Pharmaceuticals & Chemicals	72.55	112.35	0.23	0.29	-35.42%	43791.34	43738.31	17.67%	17.60%	0.12%
Power & Energy	39.20	51.90	0.12	0.14	-24.47%	34257.16	34286.31	13.83%	13.80%	-0.09%
Service & Real Estate	2.96	4.92	0.01	0.01	-39.80%	1592.03	1594.26	0.64%	0.64%	-0.14%
Tannery	4.77	2.13	0.02	0.01	123.50%	2214.88	2192.60	0.89%	0.88%	1.02%
Telecommunication	3.00	4.57	0.01	0.01	-34.49%	35738.66	35851.63	14.42%	14.43%	-0.32%
Textile	30.45	25.74	0.10	0.07	18.29%	7442.14	7434.16	3.00%	2.99%	0.11%
Travel & Leisure	5.84	4.93	0.02	0.01	18.47%	1965.65	1986.67	0.79%	0.80%	-1.06%

MC= Market Capitalization, % Δ in Turnover= change in turnover from last day, % Δ in MC= change in Market cap from last day

Index Movers	Index Shakers	Sector wise P/E (Fd.)			
RENATA	BATBC	Bank	10.39	NBFI	18.07
ISLAMIBANK	LAFSURCEML	Cement	31.63	Paper & Printing	114.27
SQURPHARMA	GP	Ceramics	35.23	Pharmaceuticals & Chemicals	25.22
POWERGRID	RUPALIBANK	Engineering	30.05	Power & Energy	16.75
TITASGAS	BSRMLTD	Food & Allied Product	27.42	Service & Real Estate	24.79
UPGDCL	SPCL	Insurance	10.71	Tannery	38.09
GHCL	KPCL	IT	47.05	Telecommunication	22.44
BENGALWTL	LINDEBD	Jute	378.88	Textile	15.91
QSMDDRYCELL	GLAXOSMITH	Miscellaneous	30.70	Travel & Leisure	22.08
FEKDIL	JAMUNAOIL				

## Important News

## Recent Dividend Declaration

Ticker

Dividend

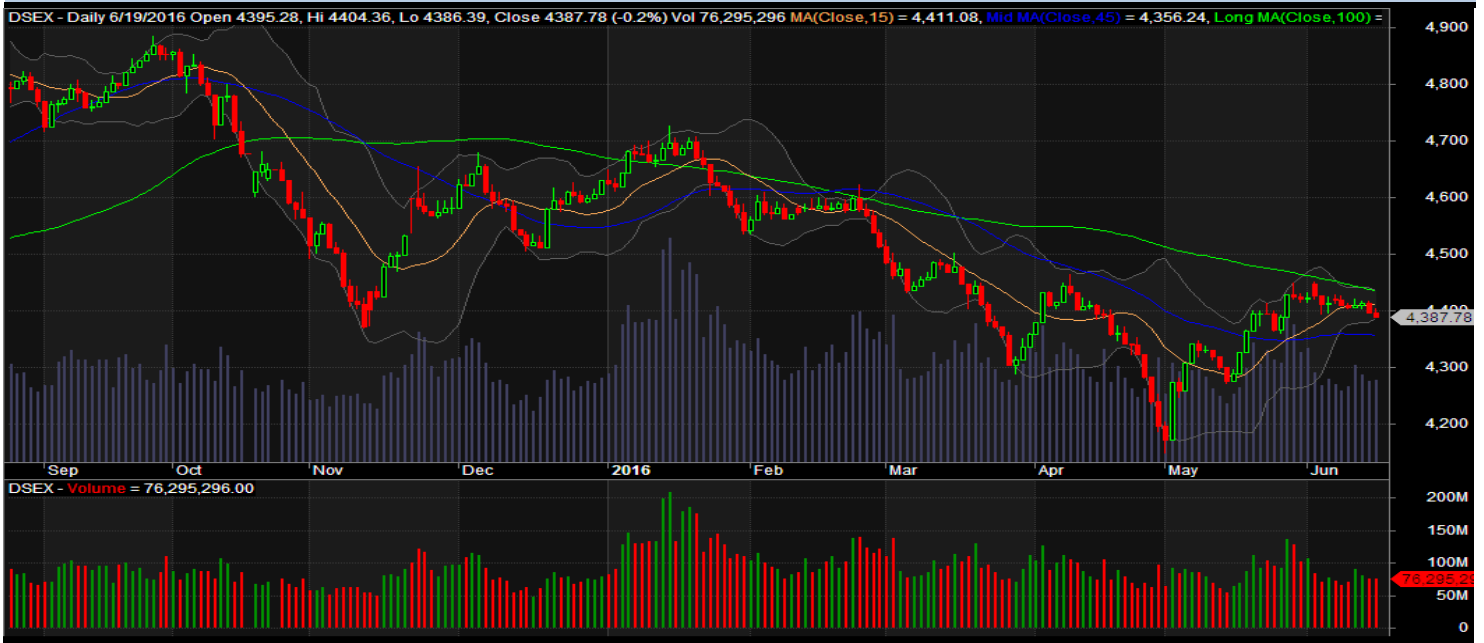
Record Date

### Company News:

**DOREENPWR: COD of 55 MW Power Plant of a Subsidiary Company:** The Company has informed that Dhaka Southern Power Generations Limited, a subsidiary of Doreen Power Generations and Systems Limited which holds 96.78% shares, has successfully completed COD procedure of 55MW Power Plant at Nababganj, Dhaka. The commercial operation date of the Plant was on June 17, 2016, subject to the approval of Bangladesh Power Development Board

Note: C= cash Dividend, B= Bonus Dividend, R=Right, N/A=NotApplicable

### DSEX Technical Graph for last one year



### MTB CAPITAL LIMITED

Corporate head office

Level: 3, MTB Tower, 111, Kazi Nazrul Islam Avenue, Dhaka

Phone: 8321714, Fax: 8321543

[www.mtbcap.com](http://www.mtbcap.com)

*A Mutual Trust Bank Company*

*you can invest with us*

### Disclaimer

This report has been prepared by the MTB Capital Limited (MTBCL) on the basis of available information in the market and it is provided for the purposes only. It is not to be used as an offer for buying or selling any instruments. If anyone takes any action relying on this information, shall be responsible solely by him/her self for any consequences. The best care has been taken to make the report informative. MTBCL doesn't give any warrant or guarantee that the report or such information is fully accurate. The information that are provided here is the exclusive property of MTBCL and can not be distributed without prior consent of MTBCL.