

Today's Market Overview



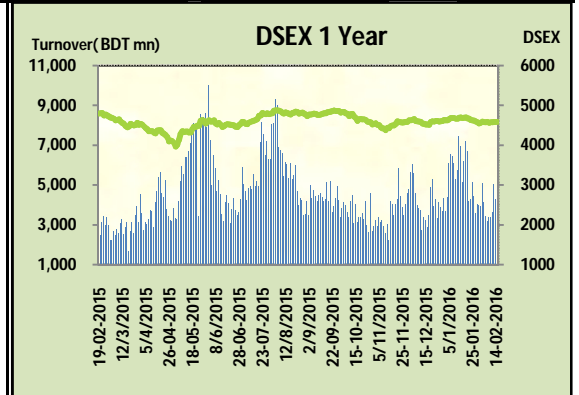
Monday, February 15, 2016

DSEX	4,585.04	0.10%	Issues Traded	Advanced	Declined	Unchanged
Turnover (BDT mn)	4,457.48	4.2%		119	166	40

Market ended with marginal gain with slightly improved turnover. The premier bourse of the nation opened with a very positive mood and gained almost 21 points with an enthusiastic participation with in the first hour but soon after the first hour sellers became very active and plunged the market in to the red zone. Market observed several recovery stances during the midsession but sellers dominated the market throughout the session. Actually positive price movement in early session motivated investors towards the market but later on diminishing participation level frustrated the investors, though the turnover succeeded to cross previous turnover but investors remained in nervousness. Most of the major sectors put a mixed show. Notable concentration occurred in Bank, Engineering & Pharmaceuticals. Other two indices DS30 & DSES the shariah based index both performed positively. Engineering was the best gainer followed by Food & Telecom while IT was the worst loser followed by Paper & Travel.

The general gauge DSEX ended at 4585.4 with an advance of +0.1% which added only 4.48 points to the broad DSEX. The Turnover advanced slightly by 4.2% which was 181 Million BDT healthier than that of previous day and finally finished the mark at 4457.48 million BDT. A total of 119 issues advanced with 166 declined and 40 remained unchanged. Sectors that improved were: Bank (+0.1%) Cement (+0.1%) Engineering (+1.8%) Food (+1.0%) Pharmaceuticals (+0.5%) Telecom (+0.6%) & Sectors that declined were: Ceramics (-0.7%) IT (-2.7%) Power (-0.6%) Service (-0.5%) Textiles (-0.4%)

BSRMLTD topped in the Volume chart with a turnover of 43.02 BDT crore. BSRMLTD ranked top gainer chart with a price hike of +9.2% and SAVAREFR topped in the loser chart with a decline of -6.8% from its prevailing price. BATBC led the way in the index mover chart while UPGDCL played the shatter part.



Index Scenario				Market Highlights					
	INDEX	Change	% Changes	DSEX 52 week H/L	4992/3960	Market P/E (LTM)	14.77		
	DSEX	4585.04	4.48	0.1%	DSEX Week H/L	4585/4570	M.Cap (mn)	3181612.3	
	DSES	1124.57	2.30	0.2%	Group Performances				
	DS30	1761.47	0.90	0.1%	Category	Mkt Cap (mn.)	Δ % M.Cap	Turnover BDT (mn)	Δ % Turnover
Turnover Scenario				Group A	2,465,781.74	0.3%	3,832.99	4.5%	
Today's Turnover (mn.)	Change In BDT (mn.)	% Change		Group B	12,082.37	-0.5%	90.52	17.6%	
4457.48	181	4.2%		Group N	34,918.76	-0.6%	328.96	-29.9%	
				Group Z	32,483.03	-0.6%	54.79	14.1%	

Top Ten Volume (in BDT. crore)										
Stock	TT	YT	AT	% Δ in Turnover	TT/AT	CP	YP	% Δ P	Number of shares	Public Holding
BSRMLTD	43.02	33.38	8.15	28.9%	427.9%	168.7	154.5	9.2%	173,351,038.0	9%
BXPHERMA	22.12	24.33	15.28	-9.1%	44.8%	94.5	93.3	1.3%	386,244,234.6	50%
SQURPHARMA	19.76	18.29	11.81	8.1%	67.3%	269.7	266.9	1.0%	623,586,546.0	9%
UPGDCL	17.39	28.13	12.89	-38.2%	34.9%	161.6	163.6	-1.2%	362,944,698.6	5%
BSRMSTEEL	13.25	8.20	4.61	61.6%	187.5%	94.4	93.2	1.3%	341,775,000.0	13%
SINGERBD	11.05	2.44	2.77	353.5%	299.4%	181.7	175.7	3.4%	76,694,491.3	20%
AMANFEED	10.40	8.76	3.23	18.6%	222.1%	49.3	47.7	3.4%	80,000,000.0	23%
OLYMPIC	9.81	9.64	6.86	1.7%	42.9%	295.2	298.6	-1.1%	190,417,988.2	27%
IFADAUTOS	8.55	25.00	7.21	-65.8%	18.7%	95.8	96.6	-0.8%	149,500,000.0	17%
SAIFPOWER	6.84	5.03	6.28	35.8%	8.8%	67.2	67.9	-1.0%	91,571,140.2	19%

TT= Today's Turnover in crore, YT= Yesterday's Turnover in Crore, AT= Average of Last 20 day's Turnover, CP= Current Price, YP= Yesterday's Price, % Δ P= percentage change in price

Top Ten Gainer						Top Ten Loser					
Stock	CP	YP	AP	% Δ P	% Δ in P from AP	Stock	CP	YP	AP	% Δ P	% Δ in P from AP
BSRMLTD	168.7	154.5	125.305	9.2%	34.6%	SAVAREFR	42.30	46.00	48.15	-8.0%	-12.1%
PRIMELIFE	60.5	55.7	45.42	8.6%	33.2%	RELIANCINS	46.70	50.00	49.90	-6.6%	-6.4%
GEMINISEA	652.7	607.2	425.57	7.5%	53.4%	SONARBAINS	14.50	15.50	15.29	-6.5%	-5.1%
ZEALBANGLA	6.4	6	6.45	6.7%	-0.8%	DULAMIACOT	6.80	7.20	7.23	-5.6%	-5.9%
BDFINANCE	14.5	13.6	13.81	6.6%	5.0%	ALLTEX	26.00	27.40	28.58	-5.1%	-9.0%
LIBRAINFU	531.9	502	396.175	6.0%	34.3%	SAMATALETE	25.20	26.40	25.99	-4.5%	-3.0%
EASTRNLAB	622.4	589.7	613.22	5.5%	1.5%	STANDARINS	13.30	13.90	14.42	-4.3%	-7.7%
APEXSPINN	105.6	100.1	98.855	5.5%	6.8%	MIRACLEIND	27.50	28.70	32.73	-4.2%	-16.0%
UNITEDINS	27.7	26.3	29.025	5.3%	-4.6%	KAY&QUE	21.50	22.40	20.45	-4.0%	5.1%
SALAMCRST	28.4	27	28.65	5.2%	-0.9%	ITC	51.90	54.00	66.13	-3.9%	-21.5%

AP= Average Price of last 20 day,% Δ in P from AP= percentage change in price from the 20-day average price

Industry /Sectors overview (Amounts in BDT. Crore)

Sector	Trade Volume		MKT Turnover %		% Δ in Turnover	Market Capitalization		% of Total MC		% Δ in MC
	Today	Yesterday	Today	Yesterday		Today	Yesterday	Today	Yesterday	
Bank	28.96	18.90	0.07	0.04	53.2%	39597.87	39568.93	15.58%	15.61%	0.1%
Cement	14.58	17.42	0.03	0.04	-16.3%	14769.53	14754.34	5.81%	5.82%	0.1%
Ceramics	6.84	8.08	0.02	0.02	-15.4%	2754.26	2772.88	1.08%	1.09%	-0.7%
Engineering	103.70	102.19	0.24	0.24	1.5%	16170.40	15883.02	6.36%	6.27%	1.8%
Food & Allied Product	26.10	19.44	0.06	0.05	34.3%	25237.75	24994.92	9.93%	9.86%	1.0%
Insurance	14.72	13.52	0.03	0.03	8.8%	7365.61	7372.11	2.90%	2.91%	-0.1%
IT	7.94	8.60	0.02	0.02	-7.7%	952.15	978.97	0.37%	0.39%	-2.7%
Jute	0.44	0.78	0.00	0.00	-44.1%	83.44	83.90	0.03%	0.03%	-0.6%
Miscellaneous	22.27	21.00	0.05	0.05	6.0%	8435.32	8447.21	3.32%	3.33%	-0.1%
Mutual Fund	3.58	3.43	0.01	0.01	4.2%	3638.94	3634.92	1.43%	1.43%	0.1%
NBFI	19.68	16.16	0.05	0.04	21.8%	8684.53	8687.17	3.42%	3.43%	0.0%
Paper & Printing	0.66	0.46	0.00	0.00	42.1%	177.81	181.58	0.07%	0.07%	-2.1%
Pharmaceuticals & Chemicals	67.58	65.84	0.16	0.16	2.6%	42508.84	42300.43	16.73%	16.69%	0.5%
Power & Energy	50.27	68.75	0.12	0.16	-26.9%	33102.48	33291.72	13.02%	13.13%	-0.6%
Service & Real Estate	7.97	13.38	0.02	0.03	-40.4%	1832.44	1841.67	0.72%	0.73%	-0.5%
Tannery	2.46	1.47	0.01	0.00	67.7%	2381.31	2376.60	0.94%	0.94%	0.2%
Telecommunication	6.41	6.56	0.02	0.02	-2.4%	36407.93	36179.72	14.33%	14.27%	0.6%
Textile	35.63	32.13	0.08	0.08	10.9%	8028.76	8058.31	3.16%	3.18%	-0.4%
Travel & Leisure	4.32	3.25	0.01	0.01	32.6%	2024.06	2060.37	0.80%	0.81%	-1.8%

MC= Market Capitalization, % Δ in Turnover= change in turnover from last day, % Δ in MC= change in Market cap from last day

Index Movers	Index Shakers	Sector wise P/E (Fd.)			
BATBC	UPGDCL	Bank	9.07	NBFI	41.86
BSRMLTD	OLYMPIC	Cement	31.38	Paper & Printing	99.18
GP	RENATA	Ceramics	37.22	Pharmaceuticals & Chemicals	28.70
SQRPHARMA	BRACBANK	Engineering	59.57	Power & Energy	16.41
ISLAMIBANK	POWERGRID	Food & Allied Product	32.03	Service & Real Estate	33.90
BXPBARMA	HEIDELBCEM	Insurance	13.97	Tannery	54.81
SINGERBD	DBH	IT	93.04	Telecommunication	27.19
BSRMSTEEL	UCB	Jute	171.67	Textile	18.19
IDLC	UNIQUEHRL	Miscellaneous	37.07	Travel & Leisure	22.75
LAFSURCEML	MPETROLEUM				

Important News

Company News:

SAIFPOWER: Contract Signing with Chittagong Port Authority (CPA): The Company has informed that it has signed a contract with Chittagong Port Authority (CPA) on February 14, 2016 for Refurbishment of 03 nos ZPMC Brand Rubber Tyred Gantry (RTG) Cranes (no. 4007, 4008 & 4009) including repair and maintenance for six years. The value of the contract price is Tk. 29,99,64,000.00 only will impact on revenue portion of the Company .

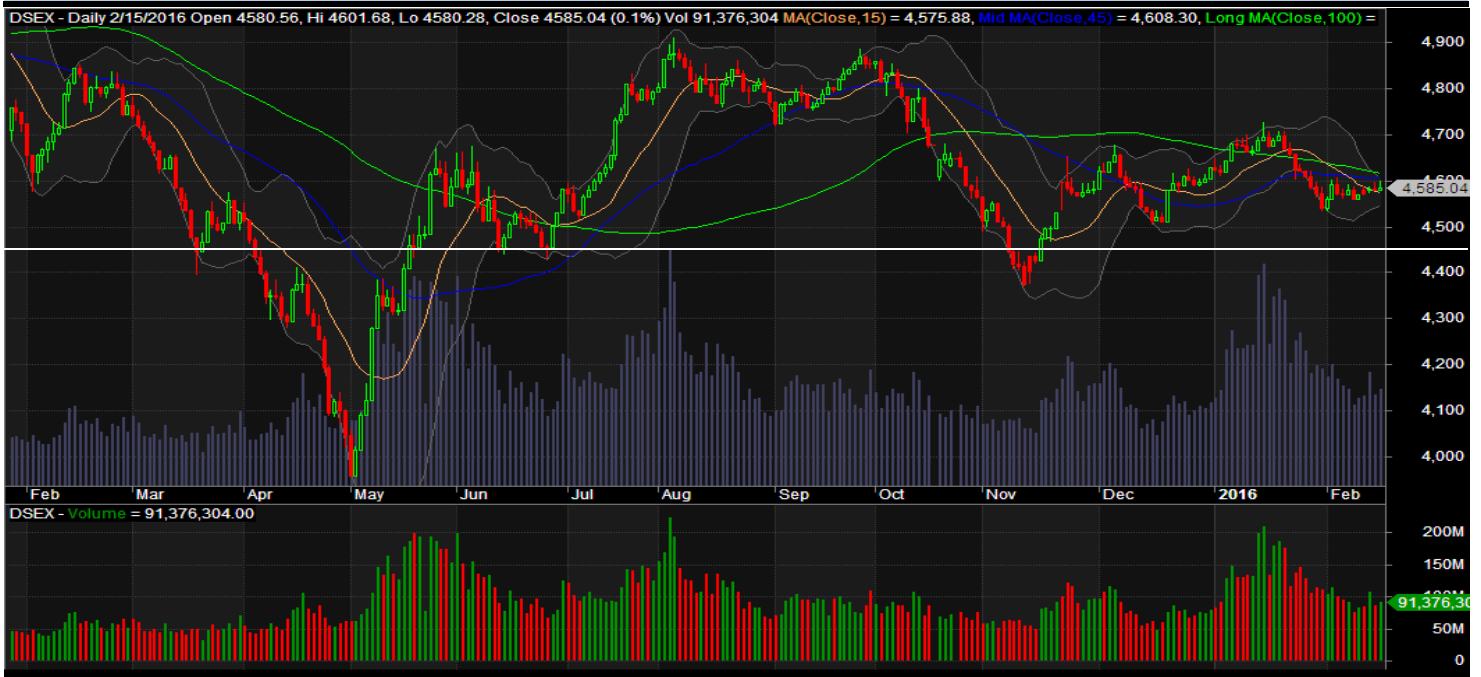
Recent Dividend Declaration

Ticker	Dividend	Record Date
--------	----------	-------------

Marico	100%C	15.02.2016
--------	-------	------------

Note: C= cash Dividend, B= Bonus Dividend, R=Right, N/A=NotApplicable

DSEX Technical Graph for last year



MTB CAPITAL LIMITED

Corporate head office

Level: 3, MTB Tower, 111, Kazi Nazrul Islam Avenue, Dhaka

Phone: 8321714, Fax: 8321543

www.mtbcap.com

A Mutual Trust Bank Company

you can invest with us

Disclaimer

This report has been prepared by the MTB Capital Limited (MTBCL) on the basis of available information in the market and it is provided for the purposes only. It is not to be used as an offer for buying or selling any instruments. If anyone takes any action relying on this information, shall be responsible solely by him/her self for any consequences. The best care has been taken to make the report informative. MTBCL doesn't give any warrant or guarantee that the report or such information is fully accurate. The information that are provided here is the exclusive property of MTBCL and can not be distributed without prior consent of MTBCL.