

Today's Market Overview



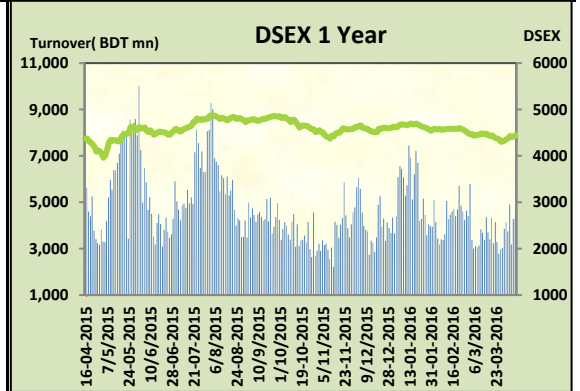
Thursday, April 07, 2016

DSEX	4,443.07	0.66%	Issues Traded	↑ Advanced 152	↓ Declined 125	↔ Unchanged 45
Turnover (BDT mn)	4,334.32	1.35%				

Market continued the gaining streak for the consecutive two days with slightly improved turnover. The premier bourse of the nation opened with a very positive mood and gained almost 30 points during the first session and DSEX remained in same position throughout the session. Price hike news of electricity ignited the buying binge of the investors toward power sector which vibrated the market positively. Investors remained very active and shifted their investment from one sector to another, most of the concentration occurred in NBFI, Pharmaceuticals & Cement. Participation level remained same like the previous day and crossed 4 billion which relieved investors from tension. Market behaved rationally while profit taker and buyers both behaved sensibly. Most of the major sectors were gainer while some of the small cap sectors were loser. Other two indices DS30 & DSES the shariah based index both performed positively. Cement was the best gainer followed by Power & Service.

The general gauge DSEX ended at 4443.07 with an advance of +0.66% which added 29.21 points to the broad DSEX. The Turnover advanced slightly by 1.3% which was 58 Million BDT healthier than that of previous day and finally finished the mark at 4334.32 million BDT. A total of 152 issues advanced with 125 declined and 45 remained unchanged. Sectors that improved were: Bank (+0.8%) Cement (+2.2%) Ceramics (+1.3%) Engineering (+0.4%) NBFI (+0.8%) Pharmaceuticals (+0.6%) Power (+1.5%) Service (+0.9%) Telecom (+0.2%) Textiles (+0.3%) & Sectors that declined were: Miscellaneous (-0.5%) Paper (-1.4%) Tannery (-0.3%) Travel (-0.1%)

IBNSINA topped in the Volume chart with a turnover of 16.11 BDT crore. AZIZPIPES ranked top in gainer chart with a price hike of +10.0 % and FIRSTS BANK topped in the loser chart with a decline of -9.9% from its prevailing price. ISLAMIBANK led the way in the index mover chart while FIRSTS BANK played the shatter part.



Index Scenario				Market Highlights					
	INDEX	Change	% Changes	DSEX 52 week H/L	4992/3960	Market P/E (LTM)	13.79		
	DSEX	4443.07	29.21	0.7%	DSEX Week H/L	4443/4379	M.Cap	3093465.4	
	DSES	1075.90	8.26	0.8%	Group Performances				
	DS30	1686.24	15.72	0.9%	Category	Mkt Cap (mn.)	Δ % M.Cap	Turnover BDT (mn)	Δ % Turnover
Turnover Scenario				Group A	2,350,912.25	0.7%	3,387.97	26.4%	
Today's Turnover (mn.)	Change In BDT (mn.)	% Change		Group B	11,748.52	0.6%	77.88	12.7%	
4334.32	58	1.3%		Group N	45,901.99	-2.5%	645.25	-43.7%	
				Group Z	42,257.64	0.6%	189.29	-27.0%	

Top Ten Volume (in BDT. crore)										
Stock	TT	YT	AT	% Δ in Turnover	TT/AT	CP	YP	% Δ P	Number of shares	Public Holding
IBNSINA	16.11	14.92	4.96	8.0%	224.5%	200.4	193.6	3.5%	22,453,200.0	46%
DOREENPWR	16.11	67.11	41.61	-76.0%	-61.3%	78.5	83.7	-6.2%	80,000,000.0	23%
ACI	15.05	3.58	3.50	320.0%	329.8%	569.9	555	2.7%	39,553,240.3	27%
POWERGRID	14.97	5.00	4.48	199.3%	234.3%	60.2	56.7	6.2%	460,912,991.0	5%
KEYACOSMET	14.25	22.08	12.25	-35.4%	16.3%	15.8	16	-1.3%	707,702,444.0	66%
BSRMLTD	14.08	18.53	11.25	-24.0%	25.2%	193.3	189.5	2.0%	173,351,038.0	9%
AMANFEED	12.20	14.54	12.60	-16.1%	-3.1%	78.9	81.7	-3.4%	80,000,000.0	23%
TITASGAS	12.00	6.06	5.05	98.2%	137.7%	48.3	46.1	4.8%	989,221,831.0	25%
LANKABAFIN	11.18	11.44	11.13	-2.2%	0.5%	36.5	36.2	0.8%	240,643,434.9	61%
ORIONINFU	10.05	9.34	7.86	7.5%	27.8%	73.6	76.1	-3.3%	20,359,760.0	33%

TT= Today's Turnover in crore, YT= Yesterday's Turnover in Crore, AT= Average of Last 20 day's Turnover, CP= Current Price, YP= Yesterday's Price, % Δ P= percentage change in price

 **Top Ten Gainer**

Top Ten Loser 

Stock	CP	YP	AP	% Δ P	% Δ in P from AP	Stock	CP	YP	AP	% Δ P	% Δ in P from AP
AZIZPIPES	33	30	32.575	10.0%	1.3%	FIRSTSBANK	8.20	9.10	8.91	-9.9%	-8.0%
ISLAMIBANK	25.5	23.2	23.375	9.9%	9.1%	DOREENPWR	78.50	83.70	NM	-6.2%	NM
EASTERNINS	24	22	23.96	9.1%	0.2%	SHASHADNIM	39.10	41.50	40.38	-5.8%	-3.2%
PRAGATILIF	134.9	125.2	115.985	7.7%	16.3%	TAKAFULINS	14.20	15.00	15.26	-5.3%	-6.9%
DSHGARME	207.3	195.2	190.15	6.2%	9.0%	MEGCONMIL	6.80	7.10	7.00	-4.2%	-2.9%
POWERGRID	60.2	56.7	53.17	6.2%	13.2%	ZAHINTEX	20.80	21.70	21.65	-4.1%	-3.9%
RNSPIN	25.4	24	23.75	5.8%	6.9%	RELIANCE1	7.00	7.30	6.95	-4.1%	0.7%
ISNLTD	14.9	14.1	14.97	5.7%	-0.5%	ABB1STMF	4.80	5.00	4.66	-4.0%	3.0%
HEIDELBCEM	539.1	511	521.56	5.5%	3.4%	PRIMEIICBA	4.90	5.10	4.71	-3.9%	4.1%
CITYGENINS	13.5	12.8	13.13	5.5%	2.8%	DSSL	16.50	17.10	NM	-3.5%	NM

AP= Average Price of last 20 day,% Δ in P from AP= percentage change in price from the 20-day average price

Industry /Sectors overview (Amounts in BDT. Crore)

Sector	Trade Volume		MKT Turnover %		% Δ in Turnover	Market Capitalization		% of Total MC		% Δ in MC
	Today	Yesterday	Today	Yesterday		Today	Yesterday	Today	Yesterday	
Bank	21.97	20.58	0.05	0.05	6.8%	37887.09	37572.44	15.49%	15.47%	0.8%
Cement	14.36	10.31	0.03	0.03	39.2%	13911.65	13612.52	5.69%	5.60%	2.2%
Ceramics	4.16	6.70	0.01	0.02	-37.8%	2667.19	2631.90	1.09%	1.08%	1.3%
Engineering	53.92	53.58	0.13	0.13	0.6%	15475.92	15411.49	6.33%	6.35%	0.4%
Food & Allied Product	17.20	12.80	0.04	0.03	34.4%	23021.08	23017.26	9.41%	9.48%	0.0%
Insurance	9.90	6.90	0.02	0.02	43.5%	7284.86	7194.40	2.98%	2.96%	1.3%
IT	10.69	13.09	0.03	0.03	-18.3%	1048.01	1048.10	0.43%	0.43%	0.0%
Jute	0.73	0.65	0.00	0.00	13.2%	83.22	83.12	0.03%	0.03%	0.1%
Miscellaneous	26.80	26.13	0.06	0.06	2.6%	8353.52	8394.97	3.42%	3.46%	-0.5%
Mutual Fund	2.25	4.67	0.01	0.01	-51.7%	3697.75	3709.32	1.51%	1.53%	-0.3%
NBFI	39.16	25.63	0.09	0.06	52.8%	8129.54	8064.72	3.32%	3.32%	0.8%
Paper & Printing	0.59	0.54	0.00	0.00	8.3%	172.24	174.66	0.07%	0.07%	-1.4%
Pharmaceuticals & Chemicals	88.76	71.50	0.21	0.18	24.1%	41866.13	41629.46	17.12%	17.14%	0.6%
Power & Energy	81.73	113.16	0.20	0.28	-27.8%	33992.12	33500.89	13.90%	13.79%	1.5%
Service & Real Estate	8.32	5.97	0.02	0.01	39.2%	1744.51	1728.44	0.71%	0.71%	0.9%
Tannery	1.10	0.97	0.00	0.00	13.5%	2184.63	2191.00	0.89%	0.90%	-0.3%
Telecommunication	2.75	2.02	0.01	0.00	36.7%	33193.81	33114.44	13.57%	13.63%	0.2%
Textile	25.38	26.02	0.06	0.06	-2.4%	7838.52	7811.45	3.21%	3.22%	0.3%
Travel & Leisure	5.22	2.71	0.01	0.01	92.8%	1971.56	1973.92	0.81%	0.81%	-0.1%

MC= Market Capitalization, % Δ in Turnover= change in turnover from last day, % Δ in MC= change in Market cap from last day

Index Movers	Index Shakers	Sector wise P/E (Fd.)			
ISLAMIBANK	FIRSTSBANK	Bank	8.53	NBFI	40.64
TITASGAS	MJLBD	Cement	29.46	Paper & Printing	90.20
POWERGRID	PRIMEBANK	Ceramics	34.34	Pharmaceuticals & Chemicals	26.64
HEIDELBCEM	DOREENPWR	Engineering	53.44	Power & Energy	15.88
LAFSURCEML	SHASHADNIM	Food & Allied Product	29.36	Service & Real Estate	31.28
GP	RENATA	Insurance	13.46	Tannery	34.28
UPGDCL	AMANFEED	IT	115.94	Telecommunication	25.94
BSRMLTD	UNIQUEHRL	Jute	152.52	Textile	17.41
ACI	IFADAUTOS	Miscellaneous	33.59	Travel & Leisure	20.75
ACIFORMULA	EXIMBANK				

Important News

Company News:

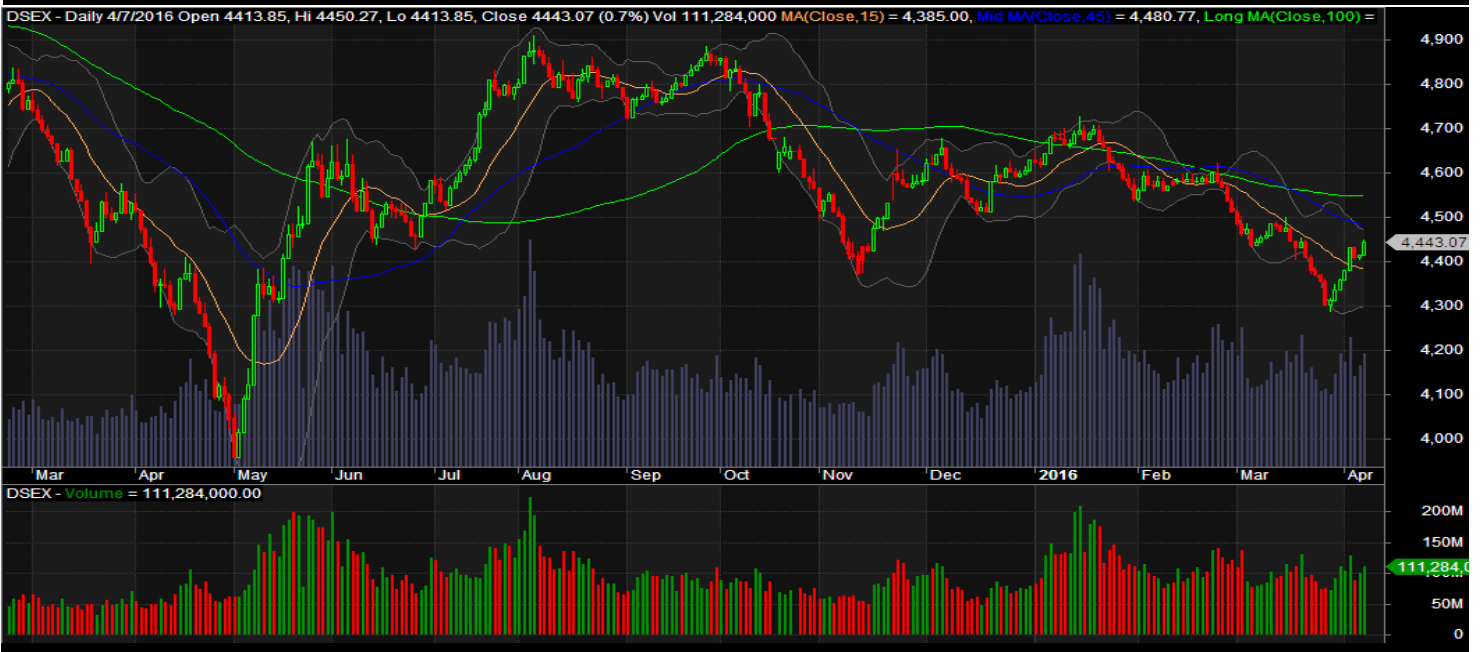
HEIDELBCEM: Board Meeting schedule under LR 16(1): As per Regulation 16(1) of the Dhaka Stock Exchange (Listing) Regulations, 2015, the Company has informed that a meeting of the Board of Directors will be held on April 13, 2016 at 4:00 PM to consider, among others, un-audited financial statements of the Company for the First Quarter (Q1) period ended on March 31, 2016.

Recent Dividend Declaration

Ticker	Dividend	Record Date
Lafarge Surma Cement Limited	5% C (Final)	13.04.16
Prime Bank Limited	15% C	11.04.2016
Al-Arafah Islami Bank Limited	10% C & 5% B	10.04.2016

Note: C= cash Dividend, B= Bonus Dividend, R=Right, N/A=NotApplicable

DSEX Technical Graph for last year



MTB CAPITAL LIMITED

Corporate head office

Level: 3, MTB Tower, 111, Kazi Nazrul Islam Avenue, Dhaka

Phone: 8321714, Fax: 8321543

www.mtbcap.com

A Mutual Trust Bank Company

you can invest with us

Disclaimer

This report has been prepared by the MTB Capital Limited (MTBCL) on the basis of available information in the market and it is provided for the purposes only. It is not to be used as an offer for buying or selling any instruments. If anyone takes any action relying on this information, shall be responsible solely by him/her self for any consequences. The best care has been taken to make the report informative. MTBCL doesn't give any warrant or guarantee that the report or such information is fully accurate. The information that are provided here is the exclusive property of MTBCL and can not be distributed without prior consent of MTBCL.