

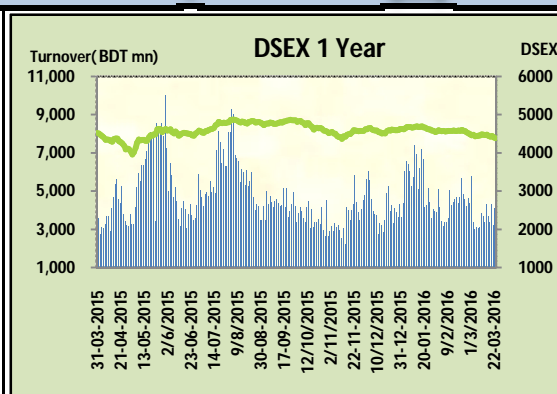
Today's Market Overview

Wednesday, March 23, 2016



DSEX	4,381.16	-0.66%	Issues Traded	↑ Advanced 86	↓ Declined 191	↔ Unchanged 40
Turnover (BDT mn)	4,141.58	28.0%				

Market continued the losing streak for the consecutive two days with an improved turnover. The premier bourse of the nation opened with a negative mood and continued the same mood till the closure. Market plunged almost 40 points which hit the lowest mark from the November of last year. Investors became very severe while found that index failed to hold above 4400 mark in the first session, then panic investors motivated others to offload holdings with fear. Most of the major sectors face the ruthlessness from the investors. Somehow turnover crossed 4 billion mark as some investors tried to participate with the hope of future upturn as DSEX touched the support level. Most of the major and prominent sectors found improved concentration compare to last day, among them Power, Telecom & Food got notable concentration. Other two indices DS30 & DSES the shariah based index both performed poor. Tannery was the best gainer followed by Jute & Miscellaneous while IT was the worst loser followed by Power & Cement.



The general gauge DSEX ended at 4381 with a decline of -0.7% which cut 29.06 points from the broad DSEX. The Turnover advanced heavily by +28.0% which was 907 Million BDT healthier than that of previous day and finally finished the mark at 4141.58 million BDT. A total of 86 issues advanced with 191 declined and 40 remained unchanged. Sectors that improved were: Miscellaneous (+0.1%) Jute (+1.4%) Tannery (+0.4%) Sectors that declined were: Bank (-0.1%) Cement (-1.5%) Ceramics (-0.2%) Engineering (-0.6%) Food (-0.6%) Insurance (-1.4%) IT (-2.4%) NBFi (-0.4%) Pharmaceuticals (-0.5%) Power (-1.5%) Service (-1.4%) Telecom (-0.3%) Textiles (-1.2%) Travel (-0.5%)



Debutant DSSL topped in the Volume chart with a turnover of 32.90 BDT crore. DSSL ranked top gainer chart with a price hike of +88.0% and ZEALBANGLA topped in the loser chart with a decline of -8.3% from its prevailing price. DSSL led the way in the index mover chart while BATBC played the shatter part.

Index Scenario				Market Highlights				
	INDEX	Change	% Changes	DSEX 52 week H/L	4992/3960	Market P/E (LTM)	13.57	
	DSEX	4381.16	(29.06)	DSEX Week H/L	4446/4381	M.Cap (mn)	3044659.0	
	DSES	1060.79	(7.39)	Group Performances				
	DS30	1658.15	(15.73)	Category	Mkt Cap (mn.)	Δ % M.Cap	Turnover BDT (mn)	Δ % Turnover
				Group A	2,313,404.17	-0.6%	2,856.81	9.5%
				Group B	11,948.86	-1.0%	70.14	-43.3%
				Group N	39,055.55	1.1%	618.08	146.8%
				Group Z	34,487.85	-0.5%	240.51	24.1%
Turnover Scenario								
	Today's Turnover (mn.)	Change In BDT (mn.)	% Change					
	4141.58	907	28.0%					

Top Ten Volume (in BDT. crore)										
Stock	TT	YT	AT	% Δ in Turnover	TT/AT	CP	YP	% Δ P	Number of shares	Public Holding
DSSL	32.90	NT	32.90	NM	0.0%	18.8	10	88.0%	100,000,000.0	56%
KEYACOSMET	21.21	16.63	6.17	27.5%	243.8%	15.5	15.3	1.3%	257,856,010.6	66%
BSRMLTD	13.73	10.50	13.14	30.7%	4.4%	181.3	176.9	2.5%	173,351,038.0	9%
EMERALDOIL	11.59	7.30	5.17	58.6%	124.1%	61.3	58.9	4.1%	54,285,000.0	38%
SQURPHARMA	10.71	23.80	8.70	-55.0%	23.1%	252.9	254	-0.4%	623,586,546.0	9%
AFCAGRO	9.91	10.80	5.08	-8.2%	94.9%	74.5	72.3	3.0%	63,250,000.0	57%
AMANFEED	9.80	7.95	10.29	23.3%	-4.7%	77.2	73.8	4.6%	80,000,000.0	23%
TITASGAS	7.99	3.88	3.25	105.9%	145.8%	41.8	42.6	-1.9%	989,221,831.0	25%
DELTA LIFE	7.30	2.18	2.75	235.4%	165.7%	112.8	114.4	-1.4%	123,750,000.0	63%
ORIONINFU	7.21	6.27	3.95	14.9%	82.5%	66.9	63.8	4.9%	20,359,760.0	33%

TT= Today's Turnover in crore, YT= Yesterday's Turnover in Crore, AT= Average of Last 20 day's Turnover, CP= Current Price, YP= Yesterday's Price, % Δ P= percentage change in price

Top Ten Gainer						Top Ten Loser					
Stock	CP	YP	AP	% Δ P	% Δ in P from AP	Stock	CP	YP	AP	% Δ P	% Δ in P from AP
DSSL	18.8	10	NM	88.0%	NM	ZEALBANGLA	5.50	6.00	6.12	-8.3%	-10.1%
LIBRAINFU	470.7	432.9	417.255	8.7%	12.8%	AGRANINS	15.10	16.00	16.33	-5.6%	-7.5%
GEMINISEA	654.2	608.6	575.865	7.5%	13.6%	NITOLINS	22.70	24.00	23.78	-5.4%	-4.5%
DBH	112.4	106.6	107.76	5.4%	4.3%	RELIANCINS	39.80	42.00	45.21	-5.2%	-12.0%
STYLECRAFT	1049.2	999.4	1010.765	5.0%	3.8%	BIFC	9.10	9.60	10.62	-5.2%	-14.3%
ORIONINFU	66.9	63.8	58.72	4.9%	13.9%	ISLAMIINS	16.10	16.90	17.04	-4.7%	-5.5%
AMANFEED	77.2	73.8	62.46	4.6%	23.6%	REGENTTEX	19.40	20.30	19.22	-4.4%	0.9%
EASTRN LUB	813.2	777.9	655.435	4.5%	24.1%	MIDASFIN	18.00	18.80	17.80	-4.3%	1.1%
EMERALDOIL	61.3	58.9	54.52	4.1%	12.4%	JANATAINS	11.30	11.80	11.89	-4.2%	-5.0%
MONNOSTAF	333.9	321.1	319.075	4.0%	4.6%	DULAMIACO1	7.20	7.50	6.85	-4.0%	5.1%

AP= Average Price of last 20 day,% Δ in P from AP= percentage change in price from the 20-day average price

Industry /Sectors overview (Amounts in BDT. Crore)											
Sector	Trade Volume		MKT Turnover %		% Δ in Turnover	Market Capitalization		% of Total MC		% Δ in MC	
	Today	Yesterday	Today	Yesterday		Today	Yesterday	Today	Yesterday		
Bank	21.90	18.08	0.06	0.06	21.1%	37816.82	37855.41	15.80%	15.72%	-0.1%	
Cement	7.88	5.78	0.02	0.02	36.2%	13897.89	14110.45	5.81%	5.86%	-1.5%	
Ceramics	7.67	5.03	0.02	0.02	52.5%	2573.41	2578.86	1.08%	1.07%	-0.2%	
Engineering	48.63	48.11	0.14	0.15	1.1%	15236.45	15329.94	6.37%	6.37%	-0.6%	
Food & Allied Product	22.49	15.29	0.07	0.05	47.0%	21860.77	22002.52	9.14%	9.14%	-0.6%	
Insurance	11.16	6.24	0.03	0.02	78.8%	7228.90	7332.71	3.02%	3.04%	-1.4%	
IT	5.63	4.60	0.02	0.01	22.5%	934.42	957.32	0.39%	0.40%	-2.4%	
Jute	1.07	0.24	0.00	0.00	349.1%	83.03	82.72	0.03%	0.03%	0.4%	
Miscellaneous	32.79	26.65	0.10	0.09	23.1%	8422.64	8412.09	3.52%	3.49%	0.1%	
Mutual Fund	1.90	1.16	0.01	0.00	63.6%	3606.49	3618.11	1.51%	1.50%	-0.3%	
NBFI	16.80	15.39	0.05	0.05	9.1%	7898.59	7932.78	3.30%	3.29%	-0.4%	
Paper & Printing	0.32	0.56	0.00	0.00	-42.7%	183.47	185.56	0.08%	0.08%	-1.1%	
Pharmaceuticals & Chemicals	70.92	78.48	0.21	0.25	-9.6%	40389.89	40597.18	16.88%	16.86%	-0.5%	
Power & Energy	41.16	32.00	0.12	0.10	28.6%	31707.64	32174.67	13.25%	13.36%	-1.5%	
Service & Real Estate	3.95	8.80	0.01	0.03	-55.1%	1647.99	1671.66	0.69%	0.69%	-1.4%	
Tannery	1.55	3.14	0.00	0.01	-50.7%	2204.43	2196.37	0.92%	0.91%	0.4%	
Telecommunication	7.26	3.48	0.02	0.01	108.8%	33679.30	33796.59	14.08%	14.03%	-0.3%	
Textile	32.29	37.43	0.10	0.12	-13.7%	7913.47	8006.32	3.31%	3.32%	-1.2%	
Travel & Leisure	4.08	2.30	0.01	0.01	77.6%	1990.45	2000.47	0.83%	0.83%	-0.5%	

MC= Market Capitalization, % Δ in Turnover= change in turnover from last day, % Δ in MC= change in Market cap from last day

Index Movers	Index Shakers	Sector wise P/E (Fd.)			
DSSL	BATBC	Bank	8.42	NBFI	41.52
BSRMLTD	LAFSURCEML	Cement	29.73	Paper & Printing	97.44
DBH	SUMITPOWER	Ceramics	34.11	Pharmaceuticals & Chemicals	26.55
PADMAOIL	UPGDCL	Engineering	54.33	Power & Energy	15.33
AMANFEED	GP	Food & Allied Product	28.14	Service & Real Estate	28.01
OLYMPIC	TITASGAS	Insurance	12.71	Tannery	53.06
UCB	KPCL	IT	90.27	Telecommunication	26.33
SOUTHEASTB	SQURPHARMA	Jute	153.31	Textile	17.05
MERCANBANK	BSRMSTEEL	Miscellaneous	33.84	Travel & Leisure	20.83
EXIMBANK	ISLAMIBANK				

Important News

Company News:

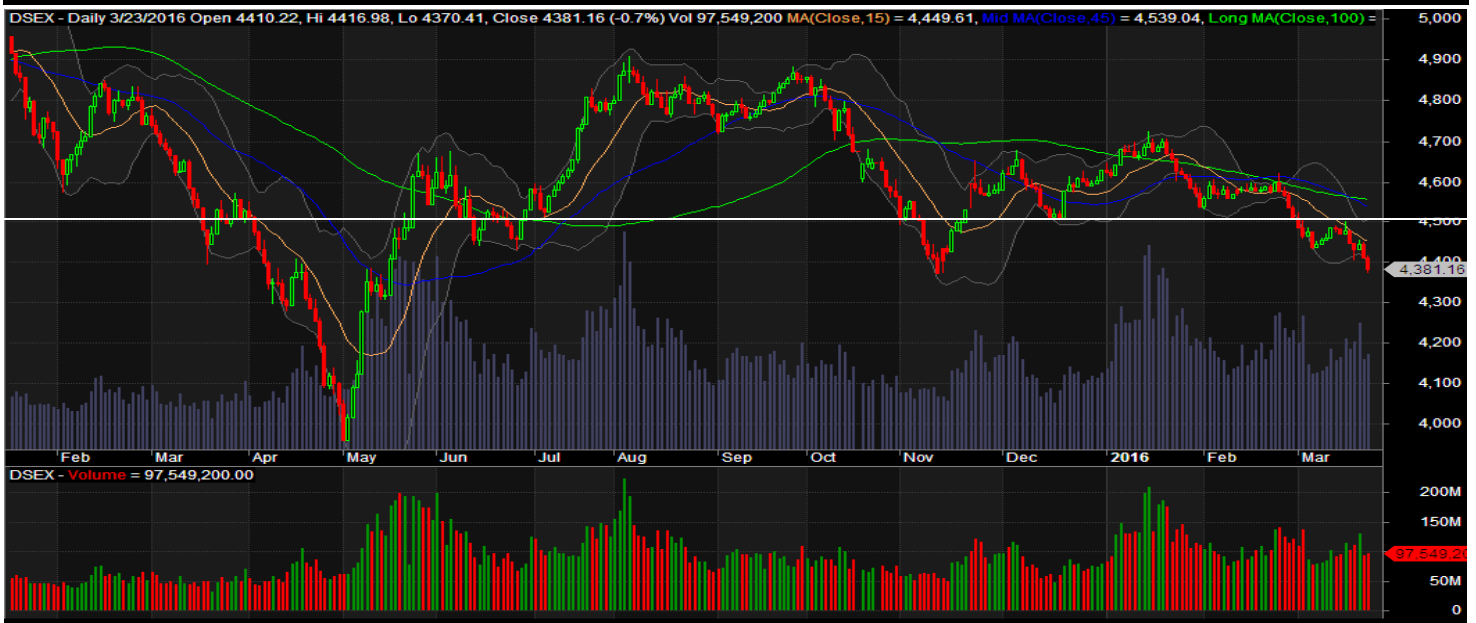
GLOBALINS: Dividend Declaration: The Board of Directors has recommended 10% stock dividend for the year ended on December 31, 2015. Date of AGM: 28.05.2016, Time: 11:00 AM, Venue: 'FARS Hotel & Resorts' 212, Shaheed Syed Nazrul Islam Sarani, Purana Paltan Dhaka-1000. Record Date: 11.04.2016. The Company has also reported EPS of Tk. 1.03, NAV per share of Tk. 12.91 and NOCFPS of Tk. 1.13 for the year ended on December 31, 2015 as against Tk. 1.15, Tk. 13.07 and Tk. (1.10) respectively for the year ended on December 31, 2014.

Recent Dividend Declaration

Ticker	Dividend	Record Date
Phoenix Finance and Investments Ltd.	20% C	31.03.16
Bank Asia Limited	15% C & 5% B	31.03.16
Lafarge Surma Cement Limited	5% C (Final)	13.04.16
Bangladesh Lamps Ltd.	20% C	30.03.16

Note: C= cash Dividend, B= Bonus Dividend, R=Right, N/A=NotApplicable

DSEX Technical Graph for last one year



MTB CAPITAL LIMITED

Corporate head office

Level: 3, MTB Tower, 111, Kazi Nazrul Islam Avenue, Dhaka

Phone: 8321714, Fax: 8321543

www.mtbcap.com

A Mutual Trust Bank Company

you can invest with us

Disclaimer

This report has been prepared by the MTB Capital Limited (MTBCL) on the basis of available information in the market and it is provided for the purposes only. It is not to be used as an offer for buying or selling any instruments. If anyone takes any action relying on this information, shall be responsible solely by him/her self for any consequences. The best care has been taken to make the report informative. MTBCL doesn't give any warrant or guarantee that the report or such information is fully accurate. The information that are provided here is the exclusive property of MTBCL and can not be distributed without prior consent of MTBCL.