

Today's Market Overview

Sunday, February 28, 2016

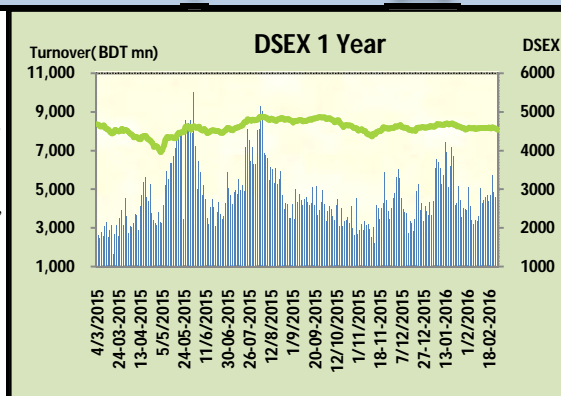


DSEX	4,536.84	-0.67%	Issues Traded	Advanced	Declined	Unchanged
Turnover (BDT mn)	4,243.36	-7.71%		83	198	41

Market extended the losing streak for consecutive three days with a sluggish turnover. Market opened with a negative mood and continued the same mood till the closure. There was not a single recovery stance occurred during the whole session which implied investors were in vigilant mood and existing investors were very uncomfortable with their holdings, moreover liquidation of two mutual funds was a tension among the investors mind. Investors' confidence level was very poor as there was no prodigious event in recent times. Participation level declined as turnover again hit below 4.5 billion after four trading sessions. Almost all of the major sectors performed poor except Engineering. Cement, Bank & Power experienced severity as investors from these sectors were frustrated. Notable concentration occurred in Engineering & Textiles. Other two indices DS30 & DSES the shariah based index both performed poor. Jute was the best gainer followed by Engineering & Travel. Cement was the worst loser followed by Service & Bank.

The general gauge DSEX ended at 4536.84 with a decline of -0.7% which cut 30.72 points from the broad DSEX. The Turnover declined by -7.7% which was 355 Million BDT poorer than that of previous day and finally finished the mark at 4243.36 million BDT. A total of 83 issues advanced with 198 declined and 41 remained unchanged. Sectors that improved were: Engineering (+1.8%) Food (+0.1%) Jute (+1.9%) Telecom (+0.1%) Travel (+1.0%) & Sectors that declined were: Bank (-1.2%) Cement (-3.1%) Insurance (-0.8%) IT (-0.7%) NBFI (-0.3%) Pharmaceuticals (-0.2%) Power (-1.1%) Service (-1.3%) Textiles (-0.4%)

BSRMLTD topped in the Volume chart with a turnover of 26.45 BDT crore. BSRMLTD ranked top gainer chart with a price hike of +9.5% and NITOLINS topped in the loser chart with a decline of -6.9% from its prevailing price. BSRMLTD led the way in the index mover chart while LAFSURCEML played the shatter part.



Index Scenario				Market Highlights				
INDEX	Change	% Changes		DSEX 52 week H/L	4992/3960	Market P/E (LTM)	14.40	
DSEX	4536.84	(30.72)	-0.7%	DSEX Week H/L	4598/4536	M.Cap (mn)	3155879.6	
DSES	1108.25	(6.97)	-0.6%	Group Performances				
DS30	1736.93	(16.28)	-0.9%	Category	Mkt Cap (mn.)	Δ % M.Cap	Turnover BDT (mn)	Δ % Turnover
Turnover Scenario				Group A	2,435,580.41	-0.5%	3,582.21	-10.3%
Today's Turnover (mn.)	Change In BDT (mn.)	% Change		Group B	12,058.62	-1.2%	68.63	-24.8%
4243.36	(355)	-7.7%		Group N	35,945.40	-1.6%	340.43	-9.5%
				Group Z	34,193.19	0.0%	77.26	12.4%

Top Ten Volume (in BDT. crore)										
Stock	TT	YT	AT	% Δ in Turnover	TT/AT	CP	YP	% Δ P	Number of shares	Public Holding
BSRMLTD	26.45	13.51	18.62	95.8%	42.1%	195.2	178.3	9.5%	173,351,038.0	9%
LANKABAFIN	23.22	45.55	9.08	-49.0%	155.8%	38.2	37.5	1.9%	240,643,434.9	61%
SINGERBD	16.62	14.31	5.09	16.2%	226.7%	187.7	187	0.4%	76,694,491.3	20%
ONEBANKLTD	14.60	5.03	2.89	190.3%	405.8%	15.6	15.6	0.0%	589,924,914.8	50%
IFADAUTOS	14.08	8.63	10.04	63.1%	40.2%	95.8	97.8	-2.0%	149,500,000.0	17%
UPGDCL	11.64	14.70	14.00	-20.8%	-16.9%	163.7	166.8	-1.9%	362,944,698.6	5%
CMCKAMAL	11.13	8.02	4.61	38.8%	141.5%	20.7	19.4	6.7%	96,811,412.6	59%
SINOBANGLA	9.25	7.31	3.34	26.5%	177.1%	39.6	40.9	-3.2%	19,996,600.0	63%
LAFSURCEML	8.23	10.59	8.71	-22.3%	-5.5%	77.1	79.4	-2.9%	1,161,373,500.0	30%
TALLUSPIN	8.17	9.13	4.02	-10.5%	103.1%	25	26.1	-4.2%	89,335,375.8	49%

TT= Today's Turnover in crore, YT= Yesterday's Turnover in Crore, AT= Average of Last 20 day's Turnover, CP= Current Price, YP= Yesterday's Price, % Δ P= percentage change in price

Top Ten Gainer						Top Ten Loser					
Stock	CP	YP	AP	% Δ P	% Δ in P from AP	Stock	CP	YP	AP	% Δ P	% Δ in P from AP
BSRMLTD	195.2	178.3	147.48	9.5%	32.4%	NITOLINS	23.00	24.70	25.10	-6.9%	-8.4%
MEGCONMILK	7.4	6.8	7.095	8.8%	4.3%	HEIDELBCEM	562.60	602.70	582.87	-6.7%	-3.5%
GEMINISEA	559.2	520.2	516.79	7.5%	8.2%	UNITEDINS	25.70	27.40	27.95	-6.2%	-8.0%
CMCKAMAL	20.7	19.4	16.66	6.7%	24.2%	DUTCHBANGI	97.80	103.10	101.92	-5.1%	-4.0%
MHSML	23.9	22.4	22.795	6.7%	4.8%	PRAGATIINS	26.20	27.50	27.72	-4.7%	-5.5%
JUTESPINN	55.7	52.6	53.545	5.9%	4.0%	ZEALBANGLA	6.30	6.60	6.28	-4.5%	0.4%
LIBRAINFU	436.6	413.5	451.42	5.6%	-3.3%	SHURWID	11.20	11.70	12.01	-4.3%	-6.7%
EASTRNLUB	592.4	563.8	633.575	5.1%	-6.5%	BIFC	11.30	11.80	11.00	-4.2%	2.8%
METROSPIN	8.4	8	8.03	5.0%	4.6%	TALLUSPIN	25.00	26.10	23.29	-4.2%	7.4%
SONARGAON	12.7	12.2	10.52	4.1%	20.7%	BDTHAI	38.70	40.40	40.10	-4.2%	-3.5%

AP= Average Price of last 20 day,% Δ in P from AP= percentage change in price from the 20-day average price

Industry /Sectors overview (Amounts in BDT. Crore)											
Sector	Trade Volume		MKT Turnover %		% Δ in Turnover	Market Capitalization		% of Total MC		% Δ in MC	
	Today	Yesterday	Today	Yesterday		Today	Yesterday	Today	Yesterday		
Bank	37.11	34.77	0.09	0.08	6.7%	38932.22	39394.53	15.49%	15.59%	-1.2%	
Cement	21.58	19.66	0.05	0.04	9.8%	15012.78	15487.63	5.97%	6.13%	-3.1%	
Ceramics	6.41	11.03	0.02	0.03	-41.9%	2853.44	2855.42	1.14%	1.13%	-0.1%	
Engineering	87.91	78.75	0.22	0.18	11.6%	16530.27	16243.15	6.58%	6.43%	1.8%	
Food & Allied Product	13.47	18.46	0.03	0.04	-27.0%	24006.47	23987.84	9.55%	9.49%	0.1%	
Insurance	6.63	12.49	0.02	0.03	-46.9%	7340.83	7397.63	2.92%	2.93%	-0.8%	
IT	7.93	7.76	0.02	0.02	2.2%	961.17	967.52	0.38%	0.38%	-0.7%	
Jute	0.27	0.33	0.00	0.00	-16.8%	81.17	79.65	0.03%	0.03%	1.9%	
Miscellaneous	25.01	24.31	0.06	0.06	2.9%	8339.68	8392.46	3.32%	3.32%	-0.6%	
Mutual Fund	3.35	5.28	0.01	0.01	-36.6%	3653.64	3678.89	1.45%	1.46%	-0.7%	
NBFI	38.00	67.33	0.09	0.15	-43.6%	8508.77	8530.96	3.38%	3.38%	-0.3%	
Paper & Printing	0.76	0.96	0.00	0.00	-20.7%	192.35	193.39	0.08%	0.08%	-0.5%	
Pharmaceuticals & Chemicals	36.69	46.17	0.09	0.10	-20.5%	41636.87	41702.96	16.56%	16.51%	-0.2%	
Power & Energy	38.83	45.89	0.10	0.10	-15.4%	32918.12	33298.65	13.09%	13.18%	-1.1%	
Service & Real Estate	4.99	6.07	0.01	0.01	-17.8%	1682.96	1705.88	0.67%	0.68%	-1.3%	
Tannery	1.12	1.20	0.00	0.00	-6.5%	2302.16	2325.50	0.92%	0.92%	-1.0%	
Telecommunication	4.60	3.24	0.01	0.01	41.9%	36365.36	36322.90	14.47%	14.38%	0.1%	
Textile	59.96	49.42	0.15	0.11	21.3%	8059.04	8094.22	3.21%	3.20%	-0.4%	
Travel & Leisure	5.59	6.84	0.01	0.02	-18.3%	2010.68	1990.29	0.80%	0.79%	1.0%	

MC= Market Capitalization, % Δ in Turnover= change in turnover from last day, % Δ in MC= change in Market cap from last day

Index Movers	Index Shakers	Sector wise P/E (Fd.)			
BSRMLTD	LAFSURCEML	Bank	8.66	NBFI	42.27
BATBC	HEIDELBCEM	Cement	32.45	Paper & Printing	99.76
BSRMSTEEL	UPGDCL	Ceramics	35.67	Pharmaceuticals & Chemicals	27.75
GP	DUTCHBANGL	Engineering	54.83	Power & Energy	15.75
SQURPHARMA	TITASGAS	Food & Allied Product	30.46	Service & Real Estate	28.89
UNIQUEHRL	GLAXOSMITH	Insurance	13.38	Tannery	53.97
PREMIERCEM	PUBALIBANK	IT	91.43	Telecommunication	26.59
ACI	OLYMPIC	Jute	165.09	Textile	17.64
PADMAOIL	CITYBANK	Miscellaneous	35.90	Travel & Leisure	22.49
LANKABAFIN	UCB				

Important News

Company News:

ONEBANKLTD: Dividend Declaration: The Board of Directors has recommended 12.50% cash dividend and 12.50% stock dividend for the year ended on December 31, 2015. Date of AGM: 31.03.2016, Time: 11:00 AM, Venue: Police Convention Hall, Eskaton Garden Road, Ramna, Dhaka-1000. Record date: 15.03.2016, The Company has also reported Consolidated EPS of Tk. 3.17, Consolidated NAV per share of Tk. 18.45 and Consolidated NOCFPS of Tk. 22.47 for the year ended on December 31, 2015 as against Tk. 2.77, Tk. 16.25 and Tk. 5.34 respectively for the year ended on December 31, 2014.

SINOBANGLA: Dividend Declaration: The Board of Directors has recommended 10% cash dividend for the year ended on October 31, 2015. Date of AGM: 15.05.2016, Time: 11:30 AM, Venue: Boro Batuakandi, Gazaria, Munshiganj. Record date: 16.03.2016. The Company has also reported EPS of Tk. 1.31, NAV per share of Tk. 24.93 and NOCFPS of Tk. 10.94 for the year ended on October 31, 2015.

HEIDELBCEM: Dividend Declaration: The Board of Directors has recommended 300% cash dividend for the year ended on December 31, 2015. Date of AGM: 13.04.2016, Time: 11:00 AM, Venue: Factory Office, Takti Jatramora, Tarabow, Ruggonj, Narayangonj. Record date: 21.03.2016.

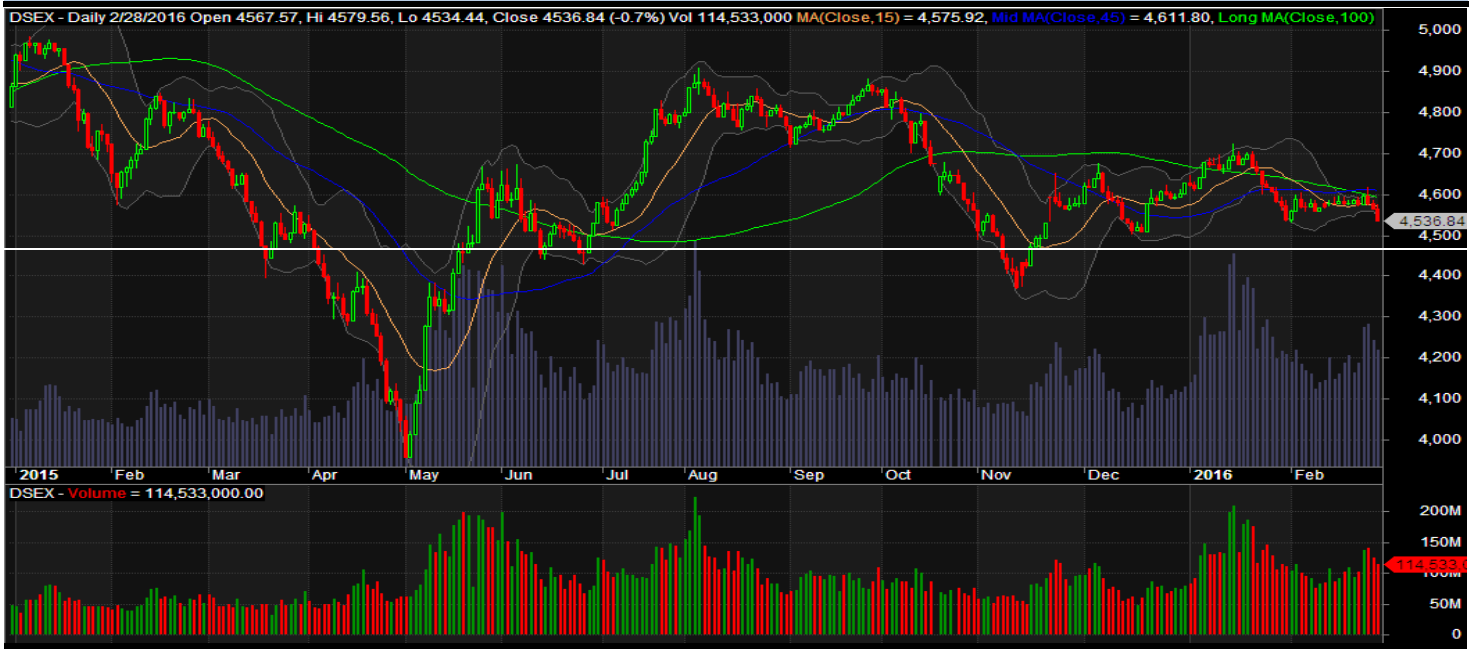
News Title: ACI: Opening a Subsidiary Company in the USA: The Company has informed that the Board of Directors has approved a plan of its subsidiary ACI HealthCare Ltd. to apply for permission of relevant authorities for opening a subsidiary company in the USA for the purpose of starting its product development, regulatory, marketing and distribution activities to facilitate the operation of its Pharma Plant at Sonargaon, Narayangonj being built to USFDA specification. The subsidiary initially will perform product development and regulatory activities.

Recent Dividend Declaration

Ticker	Dividend	Record Date
Bangladesh Steel Re-Rolling Mills Ltd.	5% C & 10% B	03.03.16
BSRM Steels Ltd.	30% C	03.03.16
Green Delta Insurance Ltd.	25% C	06.03.16
Industrial Promotion & Development Co. of Bangladesh Ltd.	20% B	08.03.16
RAK Ceramics (Bangladesh) Ltd.	25% C	28.02.16

Note: C= cash Dividend, B= Bonus Dividend, R=Right, N/A=NotApplicable

DSEX Technical Graph for last one year



MTB CAPITAL LIMITED

Corporate head office

Level: 3, MTB Tower, 111, Kazi Nazrul Islam Avenue, Dhaka

Phone: 8321714, Fax: 8321543

www.mtbcap.com

A Mutual Trust Bank Company

you can invest with us

Disclaimer

This report has been prepared by the MTB Capital Limited (MTBCL) on the basis of available information in the market and it is provided for the purposes only. It is not to be used as an offer for buying or selling any instruments. If anyone takes any action relying on this information, shall be responsible solely by him/her self for any consequences. The best care has been taken to make the report informative. MTBCL doesn't give any warrant or guarantee that the report or such information is fully accurate. The information that are provided here is the exclusive property of MTBCL and can not be distributed without prior consent of MTBCL.