

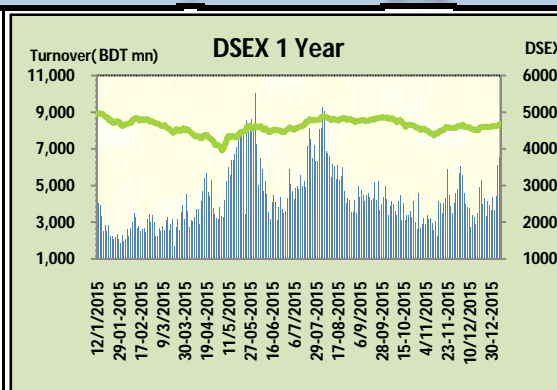
# Today's Market Overview

Wednesday, January 06, 2016



<b>DSEX</b>	4,679.81	0.79%	<b>Issues Traded</b>	↑ <b>Advanced</b> 209	↓ <b>Declined</b> 87	↔ <b>Unchanged</b> 25
<b>Turnover (BDT mn)</b>	6,557.41	7.8%				

Market continued the gaining streak for the consecutive second days with an improved turnover. Market was very flourishing throughout the session. The premier bourse of the nation started with a flying start and continued the same mood till the closure. Investors were very enthusiastic and kept themselves busy in switching. During the midsession the verdict issue regarding war crime tried to mow down a bit but investors remained so energetic and pulled it back in the flying zone. Market observed a positive shifting among the sectors which actually helped the market remained healthy. Major & big cap stocks remained in concentration along with small cap stocks also. Bank, Cement, Power & Engineering were in top of concentration table. Strong buoyancy prevailed in the market like the previous day which actually very good sign for upcoming days. Moreover macro related issue also in positive notion which also energized investors' confidence. Both DS30 & DSES the shariah based index performed positively. Cement was the best gainer followed by Power, Engineering & Food. The general gauge DSEX ended at 4679.81 with an advance of +0.8% which added 36.55 points to the broad DSEX. The Turnover advanced slightly by +7.8% which was 473 Million BDT healthier than that of previous day and finally finished the mark at 6557.41 million BDT. A total of 209 issues advanced with 87 declined and 25 remained unchanged. Sectors that improved were: Bank (+0.3%) Cement (+2.7%) Ceramics (+1.5%) Engineering (+2.0%) NBFI (+0.9%) Pharmaceuticals (+0.4%) Power (+1.5%) Miscellaneous (+0.6%) Textiles (+1.7%) IT (+1.8%) & there was no losing sector today. UPGDCL topped in the Volume chart with a turnover of 36.36 BDT crore. MHSML ranked top gainer chart with a price hike of +9.7 % and RNSPIN topped in the loser chart with a decline of -4.2% from its prevailing price. BATBC led the way in the index mover chart while BRACBANK played the shatter part.



Index Scenario				Market Highlights					
	<b>INDEX</b>	<b>Change</b>	<b>% Changes</b>	<b>DSEX 52 week H/L</b>	4992/3960	<b>Market P/E (LTM)</b>	15.00		
	<b>DSEX</b>	4679.81	36.55	0.8%	<b>DSEX Week H/L</b>	4680/4617	<b>M.Cap (mn)</b>	3163755.5	
	<b>DSES</b>	1128.67	10.34	0.9%	<b>Group Performances</b>				
	<b>DS30</b>	1774.99	10.91	0.6%	<b>Category</b>	<b>Mkt Cap (mn.)</b>	<b>Δ % M.Cap</b>	<b>Turnover BDT (mn)</b>	<b>Δ % Turnover</b>
<b>Turnover Scenario</b>				<b>Group A</b>	2,470,001.13	1.0%	5,537.74	12.0%	
<b>Today's Turnover (mn.)</b>	<b>Change In BDT (mn.)</b>	<b>% Change</b>		<b>Group B</b>	13,946.98	1.4%	242.85	4.1%	
6557.41	473	7.8%		<b>Group N</b>	35,792.32	1.3%	538.62	-12.2%	
				<b>Group Z</b>	27,139.55	-0.8%	36.14	-22.5%	

Top Ten Volume (in BDT. crore)										
Stock	TT	YT	AT	% Δ in Turnover	TT/AT	CP	YP	% Δ P	Number of shares	Public Holding
UPGDCL	36.36	15.17	7.98	139.7%	355.6%	156.4	148.7	5.2%	362,944,698.6	5%
BEXIMCO	24.07	26.86	11.42	-10.4%	110.8%	31.7	31.9	-0.6%	691,171,354.4	65%
BXPHERMA	22.26	19.49	17.71	14.2%	25.7%	90	88.8	1.4%	386,244,234.6	50%
EMERALDOIL	19.64	15.55	10.53	26.3%	86.5%	74.1	69.2	7.1%	54,285,000.0	38%
IFADAUTOS	18.78	21.53	6.27	-12.8%	199.6%	96.8	94.2	2.8%	149,500,000.0	17%
KPCL	17.47	12.43	6.45	40.6%	170.9%	78.4	77.1	1.7%	361,284,710.0	13%
KDSALTD	15.88	17.64	9.19	-10.0%	72.8%	90.6	91	-0.4%	52,000,000.0	21%
BDTHAI	13.79	6.27	2.77	120.0%	397.1%	38.1	35.9	6.1%	52,335,028.9	71%
SUMITPOWER	13.62	13.03	5.98	4.6%	127.8%	41.6	41.7	-0.2%	714,284,847.2	15%
ALARABANK	12.13	6.30	4.35	92.6%	179.0%	15.1	14.5	4.1%	946,958,501.0	47%

TT= Today's Turnover in crore, YT= Yesterday's Turnover in Crore, AT= Average of Last 20 day's Turnover, CP= Current Price, YP= Yesterday's Price, % Δ P= percentage change in price

Top Ten Gainer						Top Ten Loser					
Stock	CP	YP	AP	% Δ P	% Δ in P from AP	Stock	CP	YP	AP	% Δ P	% Δ in P from AP
MHSML	25.9	23.6	24.67	9.7%	5.0%	RNSPIN	22.90	23.90	21.64	-4.2%	5.8%
ALLTEX	19.3	17.6	17.525	9.7%	10.1%	SIMTEX	21.80	22.70	21.35	-4.0%	2.1%
GHAIL	26.3	24.1	23.31	9.1%	12.8%	MEGHNAPET	5.10	5.30	5.32	-3.8%	-4.0%
ARGONDENIM	25	23.2	22.57	7.8%	10.8%	JANATAINS	11.90	12.30	11.65	-3.3%	2.1%
EMERALDOIL	74.1	69.2	62.365	7.1%	18.8%	ZEALBANGLA	6.30	6.50	6.41	-3.1%	-1.6%
GHCL	42.7	40	39.05	6.8%	9.3%	CENTRALINS	16.80	17.30	16.48	-2.9%	2.0%
NTC	622.5	583.2	597.54	6.7%	4.2%	MIRACLEIND	30.50	31.40	24.25	-2.9%	25.8%
BDTHAI	38.1	35.9	34.81	6.1%	9.5%	MODERNDYE	95.40	98.20	99.95	-2.9%	-4.5%
ISNLTD	16	15.1	15.16	6.0%	5.5%	WMSHIPYARI	24.20	24.90	28.89	-2.8%	-16.2%
STANCERAM	53.8	50.8	49.9	5.9%	7.8%	FUWANGCER	11.60	11.90	11.47	-2.5%	1.1%

AP= Average Price of last 20 day,% Δ in P from AP= percentage change in price from the 20-day average price

Industry /Sectors overview (Amounts in BDT. Crore)											
Sector	Trade Volume		MKT Turnover %		% Δ in Turnover	Market Capitalization		% of Total MC		% Δ in MC	
	Today	Yesterday	Today	Yesterday		Today	Yesterday	Today	Yesterday		
Bank	40.05	34.30	0.06	0.06	16.8%	40518.21	40382.05	15.93%	16.03%	0.3%	
Cement	15.93	11.13	0.03	0.02	43.1%	14905.02	14519.79	5.86%	5.76%	2.7%	
Ceramics	7.37	4.93	0.01	0.01	49.4%	2733.18	2694.10	1.07%	1.07%	1.5%	
Engineering	134.66	126.61	0.21	0.22	6.4%	16293.01	16137.14	6.41%	6.40%	1.0%	
Food & Allied Product	35.53	29.30	0.06	0.05	21.2%	24051.11	23587.61	9.46%	9.36%	2.0%	
Insurance	11.16	10.19	0.02	0.02	9.5%	7466.61	7426.58	2.94%	2.95%	0.5%	
IT	8.63	4.41	0.01	0.01	95.8%	544.74	534.98	0.21%	0.21%	1.8%	
Jute	0.50	0.75	0.00	0.00	-33.4%	85.26	85.26	0.03%	0.03%	0.0%	
Miscellaneous	45.85	50.81	0.07	0.09	-9.8%	8374.68	8323.23	3.29%	3.30%	0.6%	
Mutual Fund	4.62	3.70	0.01	0.01	24.9%	3472.37	3426.02	1.37%	1.36%	1.4%	
NBFI	31.75	37.46	0.05	0.06	-15.3%	8791.26	8711.49	3.46%	3.46%	0.9%	
Paper & Printing	4.43	5.55	0.01	0.01	-20.1%	208.47	204.35	0.08%	0.08%	2.0%	
Pharmaceuticals & Chemicals	79.15	84.68	0.13	0.15	-6.5%	41571.27	41390.17	16.34%	16.43%	0.4%	
Power & Energy	122.46	103.79	0.19	0.18	18.0%	34682.30	34186.21	13.63%	13.57%	1.5%	
Service & Real Estate	22.45	22.88	0.04	0.04	-1.9%	2147.06	2139.20	0.84%	0.85%	0.4%	
Tannery	3.94	3.50	0.01	0.01	12.6%	2429.96	2427.91	0.96%	0.96%	0.1%	
Telecommunication	6.53	7.07	0.01	0.01	-7.6%	35876.06	35750.92	14.10%	14.19%	0.4%	
Textile	49.18	33.16	0.08	0.06	48.3%	7994.90	7859.28	3.14%	3.12%	1.7%	
Travel & Leisure	7.16	5.37	0.01	0.01	33.3%	2220.55	2203.09	0.87%	0.87%	0.8%	

MC= Market Capitalization, % Δ in Turnover= change in turnover from last day, % Δ in MC= change in Market cap from last day

Index Movers	Index Shakers	Sector wise P/E (Fd.)			
BATBC	BRACBANK	Bank	9.26	NBFI	42.89
LAFSURCEML	RENATA	Cement	32.55	Paper & Printing	89.85
UPGDCL	POWERGRID	Ceramics	45.27	Pharmaceuticals & Chemicals	28.11
GP	ACI	Engineering	31.53	Power & Energy	16.12
SQURPHARMA	CVOPRL	Food & Allied Product	30.65	Service & Real Estate	46.98
BERGERPBL	NBL	Insurance	15.67	Tannery	53.61
BSRMLTD	SINGERBD	IT	24.21	Telecommunication	27.15
ALARABANK	BEXIMCO	Jute	59.52	Textile	19.66
PADMAOIL	JAMUNABANK	Miscellaneous	36.67	Travel & Leisure	18.97
MJLBD	BSCCL				

## Important News

### Company News:

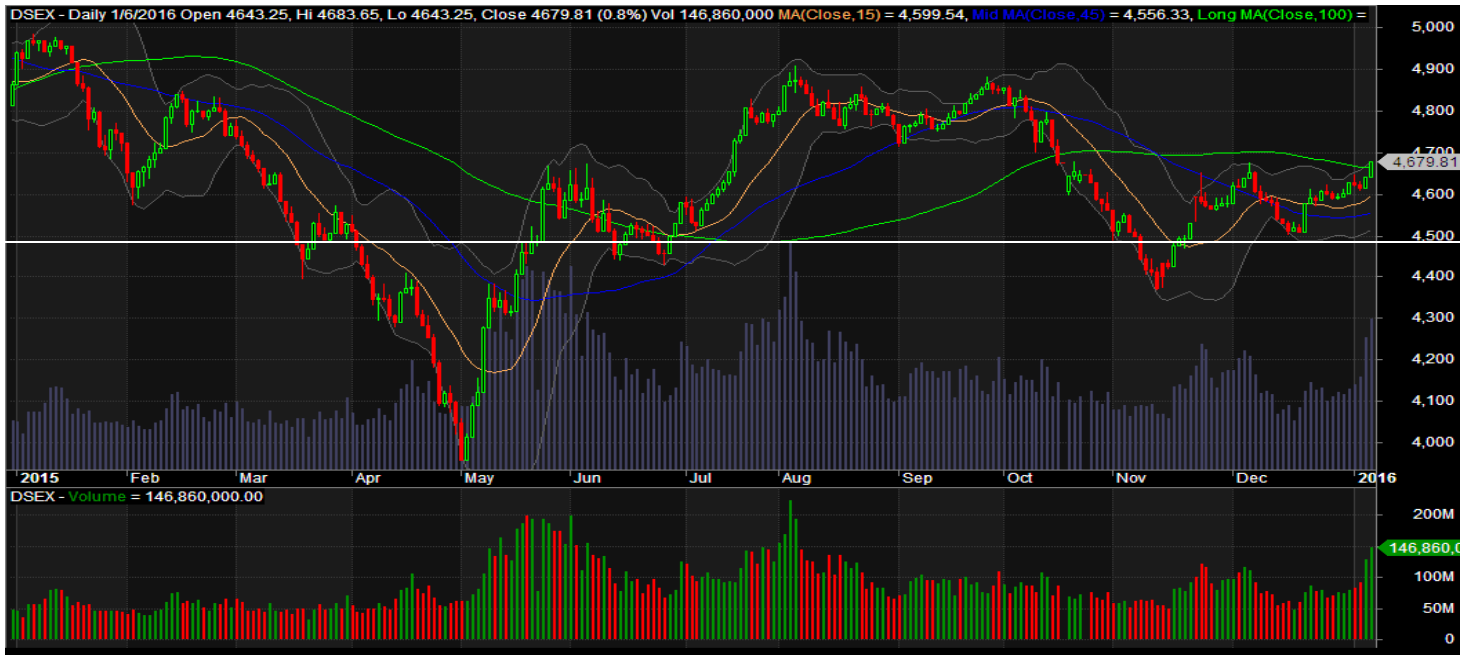
**SAIFPOWER: MOU with Bangladesh Football Federation (BFF):** The Company has informed that they have signed a Memorandum of Understanding (MOU) with Bangladesh Football Federation (BFF) to promote and popularize the game of football to frame and design a plan to hold a new Franchise based Football League, namely the Bangladesh Super League (BSL) for 15 seasons starting from the season 2016 - 2017. (cont.) (Continuation news of SAIFPOWER): All rights and/or privilege including all types of commercial and operational rights of Bangladesh Super League (BSL) shall belong to Saif Powertec Limited and all revenue generated arising out of the tournament shall be in the full right of Saif Powertec Limited.(end)

## Recent Dividend Declaration

Ticker	Dividend	Record Date
--------	----------	-------------

Note: C= cash Dividend, B= Bonus Dividend, R=Right, N/A=NotApplicable

## DSEX Technical Graph for last one year



### MTB CAPITAL LIMITED

Corporate head office

Level: 3, MTB Tower, 111, Kazi Nazrul Islam Avenue, Dhaka

Phone: 8321714, Fax: 8321543

[www.mtbcap.com](http://www.mtbcap.com)

*A Mutual Trust Bank Company*

*you can invest with us*

## Disclaimer

This report has been prepared by the MTB Capital Limited (MTBCL) on the basis of available information in the market and it is provided for the purposes only. It is not to be used as an offer for buying or selling any instruments. If anyone takes any action relying on this information, shall be responsible solely by him/her self for any consequences. The best care has been taken to make the report informative. MTBCL doesn't give any warrant or guarantee that the report or such information is fully accurate. The information that are provided here is the exclusive property of MTBCL and can not be distributed without prior consent of MTBCL.