

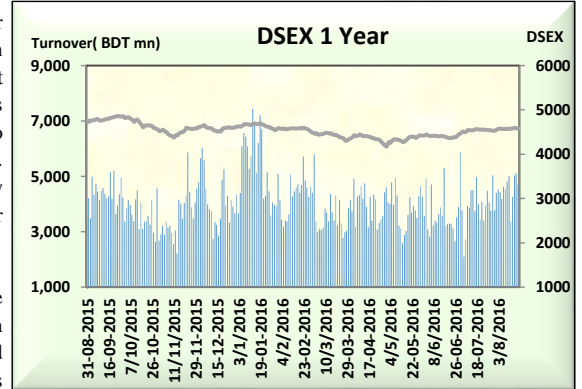
# Today's Market Overview



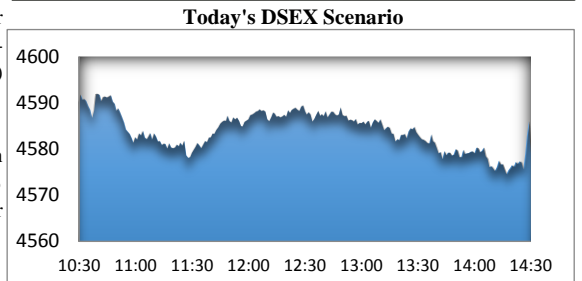
Sunday, August 21, 2016

<b>DSEX</b>	4,579.03	-0.13%	<b>Issues Traded</b>	83	<b>Advanced</b>	168	<b>Declined</b>	70	<b>Unchanged</b>
<b>Turnover (BDT mn)</b>	4,706.98	-8.05%							

Market continued the losing streak for the consecutive two days with a sluggish turnover. The premier bourse of the nation opened with a negative mood and closed with same mood, but during the midsession market tried to sympathize the investors. Sellers took the control in later part of trading session and didn't allow to resurrect the market. Sellers performed impeccably to pick the gain, mostly small cap stocks were in severity though some big cap stocks like Pharmaceuticals, Telecom & Bank also failed to perform. Interestingly major sectors like Cement, Power & NBFI got the most of the concentration. Turnover dipped below 5 billion mark after two days. Among the other two indices DS30 somehow performed marginally while DSES the shariah based index failed to put green. Travel was the best gainer followed by Service & Cement. Jute was the worst loser followed by paper & IT.



The general gauge DSEX ended at 4579 with a decline of -0.13% which cut only 6.05 points from the broad DSEX. The Turnover declined slightly by -8.05% which was only 412 Million BDT poorer than that of previous day and finally finished the mark at 4706.98 million BDT. A total of 83 issues advanced with 168 declined & 70 remained unchanged. Sectors that improved were: Cement (+1.26%) Ceramics (+1.20%) Engineering (+0.18) Insurance (+0.31%) Mutual fund (+0.35%) NBFI (+0.07%) Power (+0.43%) Service (+1.35%) Travel (+2.07%) & Sectors that declined were: Bank (-0.33%) Food (-1.34%) IT (-1.56%) Jute (-3.78%) Miscellaneous (-0.33%) Paper (-2.13%) Pharmaceuticals (-0.40%) Telecom (-0.43%) Textiles (-0.45%) Tannery (-0.54%).



SPCL topped in the Volume chart with a turnover of 28.10 BDT crore. DACCADYE ranked top in gainer chart with a price hike of +7.5% and 8THICB topped in the loser chart with a decline of -9.9 % from its prevailing price. BRACBANK led the way in the index mover chart while GP played the shatter part.

Index Scenario				Market Highlights				
	INDEX	Change	% Changes	DSEX 52 week H/L	4874/3960	Market P/E (LTM)	13.95	
DSEX	4579.03	(6.05)	-0.13%	DSEX Week H/L	4569/4595	M.Cap	3226012.0	
DSES	1119.02	(2.48)	-0.22%	Group Performances				
DS30	1766.26	0.33	0.02%	Category	Mkt Cap (mn.)	Δ % M.Cap	Turnover BDT (mn)	Δ % Turnover
Turnover Scenario				Group A	2,464,831.01	-0.1%	4,072.54	-3.2%
Today's Turnover (mn.)	Change In BDT (mn.)	% Change		Group B	10,981.99	-1.1%	76.18	-54.3%
4706.98	(412)	-8.05%		Group N	65,937.11	-3.1%	409.61	-21.3%
				Group Z	38,932.79	-0.1%	64.30	2.7%

Top Ten Volume (in BDT. crore)										
Stock	TT	YT	AT	% Δ in Turnover	TT/AT	CP	YP	% Δ P	Number of shares	Public Holding
SPCL	28.10	8.88	7.79	216.5%	260.5%	158.1	153	3.3%	274,244,180.0	9%
NLTUBES	19.71	19.61	8.04	0.5%	145.3%	140.1	131.4	6.6%	362,944,698.6	5%
AMANFEED	13.88	15.28	5.43	-9.1%	155.7%	82.6	84	-1.7%	15,218,280.0	19%
MJLBD	12.40	14.79	12.40	-16.1%	0.0%	109.2	107.3	1.8%	341,775,000.0	13%
BSRMLTD	8.95	7.18	11.82	24.7%	-24.3%	171.1	169	1.2%	190,686,141.8	9%
LAFSURCEML	8.67	4.49	7.95	93.3%	9.0%	77	76.1	1.2%	276,739,950.1	61%
AL-HAJTEX	8.55	9.49	3.34	-9.9%	155.8%	106.4	102.7	3.6%	137,132,037.0	19%
QSMRDYCELL	8.45	15.25	3.32	-44.6%	154.5%	91.7	92.5	-0.9%	190,417,988.2	27%
BXPHERMA	8.38	6.64	8.01	26.1%	4.6%	82.3	82.2	0.1%	294,400,000.0	24%
SQURPHARMA	8.09	6.09	9.98	32.8%	-18.9%	270.2	271.5	-0.5%	54,285,000.0	38%

TT= Today's Turnover in crore, YT= Yesterday's Turnover in Crore, AT= Average of Last 20 day's Turnover, CP= Current Price, YP= Yesterday's Price, % Δ P= percentage change in price

 **Top Ten Gainer**

**Top Ten Loser** 

Stock	CP	YP	AP	% Δ P	% Δ in P from AP	Stock	CP	YP	AP	% Δ P	% Δ in P from AP
DACCADYE	10	9.3	8.93	7.5%	12.0%	8THICB	66.40	73.70	77.25	-9.9%	-14.0%
NLTUBES	140.1	131.4	111.24	6.6%	25.9%	SONARGAON	8.50	9.30	8.63	-8.6%	-1.4%
MEGHNACEM	98.9	93.1	92.855	6.2%	6.5%	RENWICKJA	717.70	759.00	664.60	-5.4%	8.0%
GQBALLPEN	76.6	72.7	67.225	5.4%	13.9%	AMBEEPHA	481.30	508.90	389.77	-5.4%	23.5%
ARAMITCEM	37.8	36.1	35.43	4.7%	6.7%	RAHIMAFOOI	59.90	63.10	57.84	-5.1%	3.6%
MICEMENT	25.1	75.4	76.23	4.5%	3.4%	RAHIMTEXT	300.10	314.60	282.38	-4.6%	6.3%
FEDERALINS	9.5	9.1	8.62	4.4%	10.2%	PHARMAID	281.60	294.40	256.62	-4.3%	9.7%
MEGCONMILK	7.4	7.1	7.51	4.2%	-1.5%	JUTESPINN	62.00	64.80	62.87	-4.3%	-1.4%
SAIFPOWER	52.9	50.9	46.97	3.9%	12.6%	LIBRAINFU	770.70	804.20	698.63	-4.2%	10.3%
IPDC	34.6	33.3	30.895	3.9%	12.0%	NORTHERN	313.10	326.70	312.73	-4.2%	0.1%

AP= Average Price of last 20 day,% Δ in P from AP= percentage change in price from the 20-day average price

**Industry /Sectors overview (Amounts in BDT. Crore)**

Sector	Trade Volume		MKT Turnover %		% Δ in Turnover	Market Capitalization		% of Total MC		% Δ in MC
	Today	Yesterday	Today	Yesterday		Today	Yesterday	Today	Yesterday	
Bank	28.40	37.87	0.06	0.08	-25.01%	41552.62	41688.16	16.12%	16.15%	-0.13%
Cement	25.44	11.34	0.06	0.02	124.37%	14985.80	14799.18	5.81%	5.73%	1.26%
Ceramics	4.63	3.17	0.01	0.01	46.10%	2362.28	2334.17	0.92%	0.90%	1.20%
Engineering	96.91	116.95	0.21	0.24	-17.14%	16293.05	16264.44	6.32%	6.30%	0.18%
Food & Allied Product	16.36	24.07	0.04	0.05	-32.02%	23079.09	23391.54	8.95%	9.06%	-1.14%
Insurance	5.49	4.79	0.01	0.01	14.61%	6375.85	6356.45	2.47%	2.46%	0.11%
IT	6.55	9.26	0.01	0.02	-29.30%	905.74	920.06	0.35%	0.36%	-1.16%
Jute	2.55	3.43	0.01	0.01	-25.42%	111.96	116.36	0.04%	0.05%	-3.78%
Miscellaneous	37.13	38.29	0.08	0.08	-3.01%	8543.49	8572.02	3.31%	3.32%	-0.13%
Mutual Fund	5.49	6.52	0.01	0.01	-15.89%	3843.93	3830.53	1.49%	1.48%	0.15%
NBFI	19.04	17.83	0.04	0.04	6.78%	7934.80	7929.60	3.08%	3.07%	0.07%
Paper & Printing	0.78	1.85	0.00	0.00	-57.89%	164.86	168.44	0.06%	0.07%	-2.13%
Pharmaceuticals & Chemicals	68.34	77.48	0.15	0.16	-11.79%	44403.76	44584.14	17.23%	17.27%	-0.10%
Power & Energy	76.49	58.85	0.17	0.12	29.98%	35438.20	35286.00	13.75%	13.67%	0.43%
Service & Real Estate	16.30	20.57	0.04	0.04	-20.75%	1668.50	1646.25	0.65%	0.64%	1.35%
Tannery	5.56	7.19	0.01	0.01	-22.64%	2329.59	2342.15	0.90%	0.91%	-0.14%
Telecommunication	7.70	10.82	0.02	0.02	-28.81%	38274.33	38439.98	14.85%	14.89%	-0.13%
Textile	34.55	41.23	0.08	0.08	-16.19%	7596.65	7631.08	2.95%	2.96%	-0.15%
Travel & Leisure	2.67	1.93	0.01	0.00	38.07%	1885.72	1847.45	0.73%	0.72%	2.07%

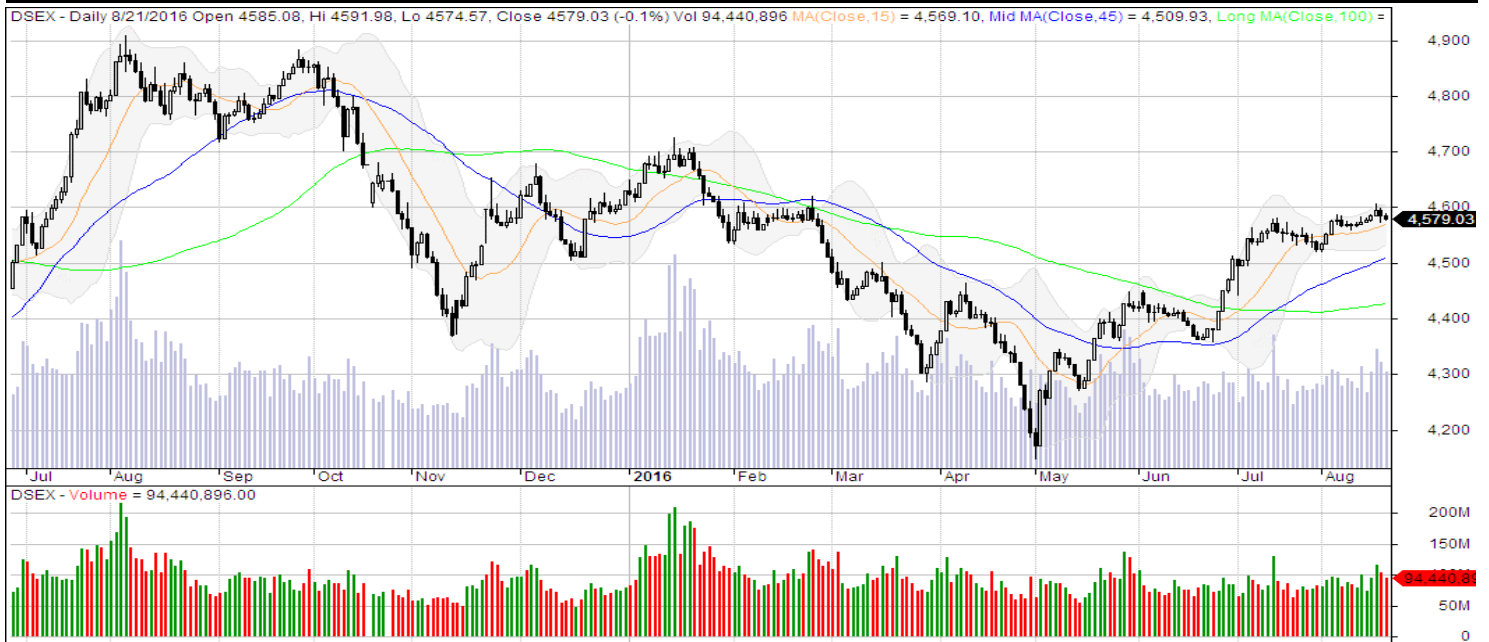
MC= Market Capitalization, % Δ in Turnover= change in turnover from last day, % Δ in MC= change in Market cap from last day

Index Movers	Index Shakers	Sector wise P/E (Fd.)			
BRACBANK	GP	Bank	9.19	NBFI	14.20
LAFSURCEML	BATBC	Cement	34.74	Paper & Printing	129.57
SPCL	OLYMPIC	Ceramics	39.84	Pharmaceuticals & Chemicals	26.32
DESCO	SQURPHARMA	Engineering	36.67	Power & Energy	17.63
MJLBD	PRIMEBANK	Food & Allied Product	25.99	Service & Real Estate	26.01
MICEMENT	MARICO	Insurance	11.03	Tannery	34.69
BSRMLTD	IFDAUTOS	IT	41.29	Telecommunication	21.34
UNIQUEHRL	ISLAMIBANK	Jute	579.01	Textile	16.83
EBL	EXIMBANK	Miscellaneous	17.56	Travel & Leisure	20.30
RENATA	ACI				

**Important News****Company News:****Recent Dividend Declaration**

Ticker	Dividend	Record Date
Square Textiles Ltd.	25% C & 10% B	23.08.2016
Meghna Life Insurance Company Limited	20% C & 5% B	05.09.2016
Bangladesh Submarine Cable Company Limited	10% C	07.09.2016
Rupali Life Insurance Limited	10% C	23.08.2016
Gemini Sea Food Ltd.	20% C & 50% B	07.09.2016
Apex Tannery Limited	40% C	08.09.2016
DBH First Mutual Fund	5% C	01.09.2016

Note: C= cash Dividend, B= Bonus Dividend, R=Right, N/A=NotApplicable

**DSEX Technical Graph for last one year****MTB CAPITAL LIMITED**

Corporate head office

Level: 3, MTB Tower, 111, Kazi Nazrul Islam Avenue, Dhaka

Phone: 8321714, Fax: 8321543

[www.mtbcap.com](http://www.mtbcap.com)*A Mutual Trust Bank Company**you can invest with us***Disclaimer**

This report has been prepared by the MTB Capital Limited (MTBCL) on the basis of available information in the market and it is provided for the purposes only. It is not to be used as an offer for buying or selling any instruments. If anyone takes any action relying on this information, shall be responsible solely by him/her self for any consequences. The best care has been taken to make the report informative. MTBCL doesn't give any warrant or guarantee that the report or such information is fully accurate. The information that are provided here is the exclusive property of MTBCL and can not be distributed without prior consent of MTBCL.