

# Today's Market Overview

Wednesday, March 09, 2016

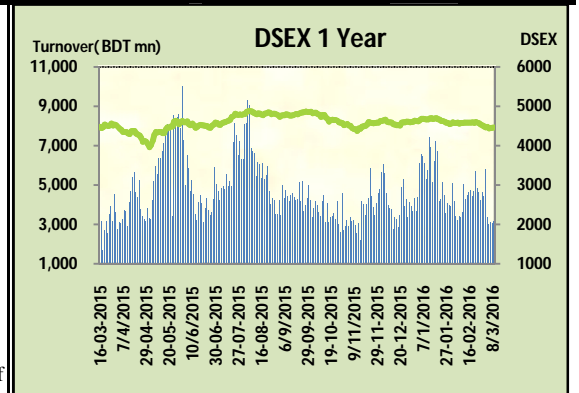


|                          |          |       |                      |                          |                          |                          |
|--------------------------|----------|-------|----------------------|--------------------------|--------------------------|--------------------------|
| <b>DSEX</b>              | 4,457.81 | 0.09% | <b>Issues Traded</b> | ↑ <b>Advanced</b><br>152 | ↓ <b>Declined</b><br>113 | ↔ <b>Unchanged</b><br>53 |
| <b>Turnover (BDT mn)</b> | 3,138.35 | 2.5%  |                      |                          |                          |                          |

Market continued the gaining streak for the consecutive three days with slightly improved turnover amid the nationwide strike. The premier bourse of the nation opened with a positive mood and continued the same mood till the closure but in last hour market observed severity though ended in positive fence. Investors remained enthusiastic in first two hour with the inauguration of mobile apps in Dhaka stock exchange but midsession turnover was very pitiable that actually motivate investors to offload their holdings in late hour. Small cap stocks investors were busy in shifting while big cap stocks performed mixed. Investors from Engineering & NBFI were little harsh while others tried to hold the price range. Turnover kept frustrating the investors and crossed 3.1 billion. Notable concentration occurred in Textiles, Miscellaneous & Pharmaceuticals. Other two indices DS30 & DSES the shariah based index both somehow managed positive mark. Food was the best gainer followed Miscellaneous & Textiles while Engineering was the worst loser followed by IT & Ceramics

The general gauge DSEX ended at 4457.81 with an advance of +0.1% which added 3.91 points to the broad DSEX. The Turnover advanced slightly by +2.5% which was 76 Million BDT healthier than that of previous day and finally finished the mark at 3138.35 million BDT. A total of 152 issues advanced with 113 declined and 53 remained unchanged. Sectors that improved were: Cement (+0.4%) Food (+1.1%) Miscellaneous (+0.9%) Power (+0.3%) Pharmaceuticals (+0.2%) Service (+0.2%) Textiles (+0.7%) & Sectors that declined were: Bank (-0.4%) Ceramics (-1.7%) Engineering (-2.2%) IT (-1.8%) Insurance (-0.8%) NBFI (-1.7%) Telecom (-0.1%) .

LANKABAFIN topped in the Volume chart with a turnover of 23.07 BDT crore. SINOBANGLA ranked top gainer chart with a price hike of +10.0% and GPHISPAT topped in the loser chart with a decline of -36.3% from its prevailing price. BATBC led the way in the index mover chart while GPHISPAT played the shatter part.



| Index Scenario                |                            |                 |                  | Market Highlights       |                           |                         |                   |                          |                     |
|-------------------------------|----------------------------|-----------------|------------------|-------------------------|---------------------------|-------------------------|-------------------|--------------------------|---------------------|
|                               | <b>INDEX</b>               | <b>Change</b>   | <b>% Changes</b> | <b>DSEX 52 week H/L</b> | 4992/3960                 | <b>Market P/E (LTM)</b> | 14.08             |                          |                     |
|                               | <b>DSEX</b>                | 4457.81         | 3.91             | 0.1%                    | <b>DSEX Week H/L</b>      | 4473/4435               | <b>M.Cap (mn)</b> | 3097098.7                |                     |
|                               | <b>DSES</b>                | 1082.82         | 2.42             | 0.2%                    | <b>Group Performances</b> |                         |                   |                          |                     |
|                               | <b>DS30</b>                | 1710.57         | 0.99             | 0.1%                    | <b>Category</b>           | <b>Mkt Cap (mn.)</b>    | <b>Δ % M.Cap</b>  | <b>Turnover BDT (mn)</b> | <b>Δ % Turnover</b> |
| <b>Turnover Scenario</b>      |                            |                 |                  | <b>Group A</b>          | 2,375,389.32              | -0.1%                   | 2,689.78          | 0.7%                     |                     |
| <b>Today's Turnover (mn.)</b> | <b>Change In BDT (mn.)</b> | <b>% Change</b> |                  | <b>Group B</b>          | 12,079.92                 | -0.2%                   | 72.25             | -0.7%                    |                     |
| 3138.35                       | 76                         | 2.5%            |                  | <b>Group N</b>          | 35,375.21                 | 1.4%                    | 313.32            | 47.3%                    |                     |
|                               |                            |                 |                  | <b>Group Z</b>          | 33,361.02                 | 0.0%                    | 35.76             | -3.1%                    |                     |

| Top Ten Volume (in BDT. crore) |       |       |       |                 |        |       |       |       |                  |                |
|--------------------------------|-------|-------|-------|-----------------|--------|-------|-------|-------|------------------|----------------|
| Stock                          | TT    | YT    | AT    | % Δ in Turnover | TT/AT  | CP    | YP    | % Δ P | Number of shares | Public Holding |
| LANKABAFIN                     | 23.07 | 19.58 | 18.16 | 17.8%           | 27.1%  | 39.4  | 40.7  | -3.2% | 240,643,434.9    | 61%            |
| CMCKAMAL                       | 14.09 | 10.81 | 8.17  | 30.4%           | 72.5%  | 22.6  | 21.7  | 4.1%  | 96,811,412.6     | 59%            |
| ORIONPHARM                     | 14.00 | 9.67  | 7.90  | 44.7%           | 77.2%  | 40    | 40.3  | -0.7% | 234,000,000.0    | 44%            |
| SINOBANGLA                     | 12.53 | 3.60  | 4.59  | 247.9%          | 172.9% | 37.5  | 34.1  | 10.0% | 19,996,600.0     | 63%            |
| IFADAUTOS                      | 10.04 | 5.68  | 12.34 | 76.8%           | -18.6% | 93.4  | 92.9  | 0.5%  | 149,500,000.0    | 17%            |
| AMANFEED                       | 9.77  | 6.32  | 8.17  | 54.7%           | 19.6%  | 58.4  | 55.1  | 6.0%  | 80,000,000.0     | 23%            |
| BXPHERMA                       | 8.68  | 6.77  | 13.55 | 28.3%           | -35.9% | 85.3  | 86    | -0.8% | 386,244,234.6    | 50%            |
| QSMDDRYCELL                    | 8.04  | 8.22  | 9.71  | -2.2%           | -17.2% | 98.9  | 101.2 | -2.3% | 40,479,436.8     | 54%            |
| SUMITPOWER                     | 7.52  | 10.71 | 7.00  | -29.8%          | 7.4%   | 42.8  | 42.9  | -0.2% | 714,284,847.2    | 15%            |
| PREMIERCCEM                    | 6.94  | 2.79  | 4.14  | 148.4%          | 67.6%  | 100.2 | 96.9  | 3.4%  | 105,450,000.0    | 10%            |

TT= Today's Turnover in crore, YT= Yesterday's Turnover in Crore, AT= Average of Last 20 day's Turnover, CP= Current Price, YP= Yesterday's Price, % Δ P= percentage change in price

| Top Ten Gainer |      |       |        |       |                  | Top Ten Loser |        |        |        |        |                  |
|----------------|------|-------|--------|-------|------------------|---------------|--------|--------|--------|--------|------------------|
| Stock          | CP   | YP    | AP     | % Δ P | % Δ in P from AP | Stock         | CP     | YP     | AP     | % Δ P  | % Δ in P from AP |
| SINOBANGLA     | 37.5 | 34.1  | 34.945 | 10.0% | 7.3%             | GPHISPAT      | 29.70  | 46.60  | 45.10  | -36.3% | -34.1%           |
| EASTRN LUB     | 729  | 678.2 | 596.09 | 7.5%  | 22.3%            | RELIANCINS    | 40.60  | 47.80  | 48.84  | -15.1% | -16.9%           |
| REGENTTEX      | 19.4 | 18.2  | 18.83  | 6.6%  | 3.0%             | IPDC          | 23.60  | 27.40  | 27.79  | -13.9% | -15.1%           |
| AMANFEED       | 58.4 | 55.1  | 53.775 | 6.0%  | 8.6%             | BDLAMPS       | 195.40 | 211.00 | 228.14 | -7.4%  | -14.3%           |
| BGIC           | 17   | 16.2  | 17.305 | 4.9%  | -1.8%            | EBL           | 25.10  | 26.70  | 29.22  | -6.0%  | -14.1%           |
| FUWANGCER      | 17.2 | 16.4  | 16.895 | 4.9%  | 1.8%             | DBH           | 107.40 | 113.50 | 115.61 | -5.4%  | -7.1%            |
| DACCADYE       | 13.2 | 12.6  | 12.95  | 4.8%  | 1.9%             | GEMINISEA     | 595.30 | 623.70 | 572.52 | -4.6%  | 4.0%             |
| ATLASBANG      | 121  | 115.7 | 120.9  | 4.6%  | 0.1%             | PREMIERLEA    | 9.30   | 9.70   | 9.15   | -4.1%  | 1.7%             |
| BDAUTOCA       | 27.8 | 26.6  | 29.645 | 4.5%  | -6.2%            | ASIAPACINS    | 14.80  | 15.40  | 15.12  | -3.9%  | -2.1%            |
| CMCKAMAL       | 22.6 | 21.7  | 19.23  | 4.1%  | 17.5%            | INTECH        | 12.70  | 13.20  | 12.99  | -3.8%  | -2.2%            |

AP= Average Price of last 20 day,% Δ in P from AP= percentage change in price from the 20-day average price

| Industry /Sectors overview (Amounts in BDT. Crore) |              |           |                |           |                 |                       |           |               |           |           |  |
|--|--------------|-----------|----------------|-----------|-----------------|-----------------------|-----------|---------------|-----------|-----------|--|
| Sector   | Trade Volume |           | MKT Turnover % |           | % Δ in Turnover | Market Capitalization |           | % of Total MC |           | % Δ in MC |  |
|  | Today        | Yesterday | Today          | Yesterday |                 | Today                 | Yesterday | Today         | Yesterday |           |  |
| Bank   | 18.26        | 18.10     | 0.06           | 0.06      | 0.9%            | 38155.90              | 38312.31  | 15.56%        | 15.62%    | -0.4%     |  |
| Cement   | 13.18        | 9.96      | 0.04           | 0.03      | 32.4%           | 14343.34              | 14287.38  | 5.85%         | 5.82%     | 0.4%      |  |
| Ceramics   | 3.97         | 5.27      | 0.01           | 0.02      | -24.6%          | 2629.79               | 2674.65   | 1.07%         | 1.09%     | -1.7%     |  |
| Engineering  | 47.97        | 54.74     | 0.16           | 0.19      | -12.4%          | 15289.71              | 15628.39  | 6.24%         | 6.37%     | -2.2%     |  |
| Food & Allied Product                              | 8.00         | 11.48     | 0.03           | 0.04      | -30.3%          | 23422.00              | 23170.34  | 9.55%         | 9.44%     | 1.1%      |  |
| Insurance  | 7.94         | 8.25      | 0.03           | 0.03      | -3.7%           | 7334.01               | 7391.90   | 2.99%         | 3.01%     | -0.8%     |  |
| IT   | 6.93         | 12.10     | 0.02           | 0.04      | -42.7%          | 949.59                | 965.80    | 0.39%         | 0.39%     | -1.7%     |  |
| Jute   | 0.97         | 2.03      | 0.00           | 0.01      | -52.2%          | 84.70                 | 84.90     | 0.03%         | 0.03%     | -0.2%     |  |
| Miscellaneous                                      | 35.44        | 20.37     | 0.12           | 0.07      | 74.0%           | 8333.74               | 8256.65   | 3.40%         | 3.37%     | 0.9%      |  |
| Mutual Fund  | 2.97         | 2.99      | 0.01           | 0.01      | -0.4%           | 3655.40               | 3653.93   | 1.49%         | 1.49%     | 0.0%      |  |
| NBFI   | 33.17        | 30.39     | 0.11           | 0.10      | 9.1%            | 8345.53               | 8488.00   | 3.40%         | 3.46%     | -1.7%     |  |
| Paper & Printing                                   | 0.37         | 0.39      | 0.00           | 0.00      | -4.8%           | 187.40                | 185.72    | 0.08%         | 0.08%     | 0.9%      |  |
| Pharmaceuticals & Chemicals                        | 41.30        | 34.80     | 0.14           | 0.12      | 18.7%           | 41165.56              | 41071.80  | 16.79%        | 16.74%    | 0.2%      |  |
| Power & Energy                                     | 33.33        | 38.99     | 0.11           | 0.13      | -14.5%          | 32822.75              | 32708.84  | 13.39%        | 13.33%    | 0.3%      |  |
| Service & Real Estate                              | 4.16         | 2.89      | 0.01           | 0.01      | 44.1%           | 1695.95               | 1692.05   | 0.69%         | 0.69%     | 0.2%      |  |
| Tannery  | 1.08         | 1.44      | 0.00           | 0.00      | -24.8%          | 2210.25               | 2219.89   | 0.90%         | 0.90%     | -0.4%     |  |
| Telecommunication                                  | 3.11         | 4.54      | 0.01           | 0.02      | -31.4%          | 34671.61              | 34706.55  | 14.14%        | 14.15%    | -0.1%     |  |
| Textile  | 40.63        | 32.28     | 0.13           | 0.11      | 25.9%           | 7969.29               | 7914.41   | 3.25%         | 3.23%     | 0.7%      |  |
| Travel & Leisure                                   | 2.60         | 3.31      | 0.01           | 0.01      | -21.4%          | 1936.23               | 1933.29   | 0.79%         | 0.79%     | 0.2%      |  |

MC= Market Capitalization, % Δ in Turnover= change in turnover from last day, % Δ in MC= change in Market cap from last day

| Index Movers | Index Shakers | Sector wise P/E (Fd.) |        |                             |        |
|--------------|---------------|-----------------------|--------|-----------------------------|--------|
| BATBC        | GPHISPAT      | Bank                  | 8.60   | NBFI                        | 41.01  |
| OLYMPIC      | EBL           | Cement                | 30.62  | Paper & Printing            | 100.09 |
| MARICO       | BSRMSTEEL     | Ceramics              | 34.98  | Pharmaceuticals & Chemicals | 27.29  |
| BEXIMCO      | BRACBANK      | Engineering           | 55.34  | Power & Energy              | 15.55  |
| TITASGAS     | DBH           | Food & Allied Product | 29.87  | Service & Real Estate       | 29.80  |
| SQRPHARMA    | RAK CERAMIC   | Insurance             | 13.03  | Tannery                     | 53.80  |
| RENATA       | IPDC          | IT                    | 89.89  | Telecommunication           | 26.60  |
| PREMIERCEM   | RELIANCINS    | Jute                  | 155.91 | Textile                     | 17.20  |
| UCB          | BSRMLTD       | Miscellaneous         | 35.38  | Travel & Leisure            | 20.55  |
| SPCL         | LANKABAFIN    |                       |        |                             |        |

## Important News

### Company News:

**APEXTANRY:** Decision for Land purchase: The Company has informed that the Board of Directors of the Company has decided to purchase a land of 15 decimals at Kandi, Bailapur, Savar at a cost of Tk. 52,00,000.00 approximately for staff dormitory.

**BDLAMPS:** Dividend Declaration The Board of Directors has recommended 20% cash dividend for the year ended on December 31, 2015. Date of AGM: 16.04.2016, Time: 11:00 AM, Venue: Emmanuelle's Banquet Hall, House No. 04, Road No. 134-135, Gulshan-1, Dhaka. Record date: 30.03.2016. The Company has also reported EPS of Tk. 3.29, NAV per share of Tk. 70.75 and NOCFPS of Tk. 3.06 for the year ended on December 31, 2015 as against Tk. 2.12, Tk. 65.82 and Tk. 9.30 respectively for the year ended on December 31, 2014.

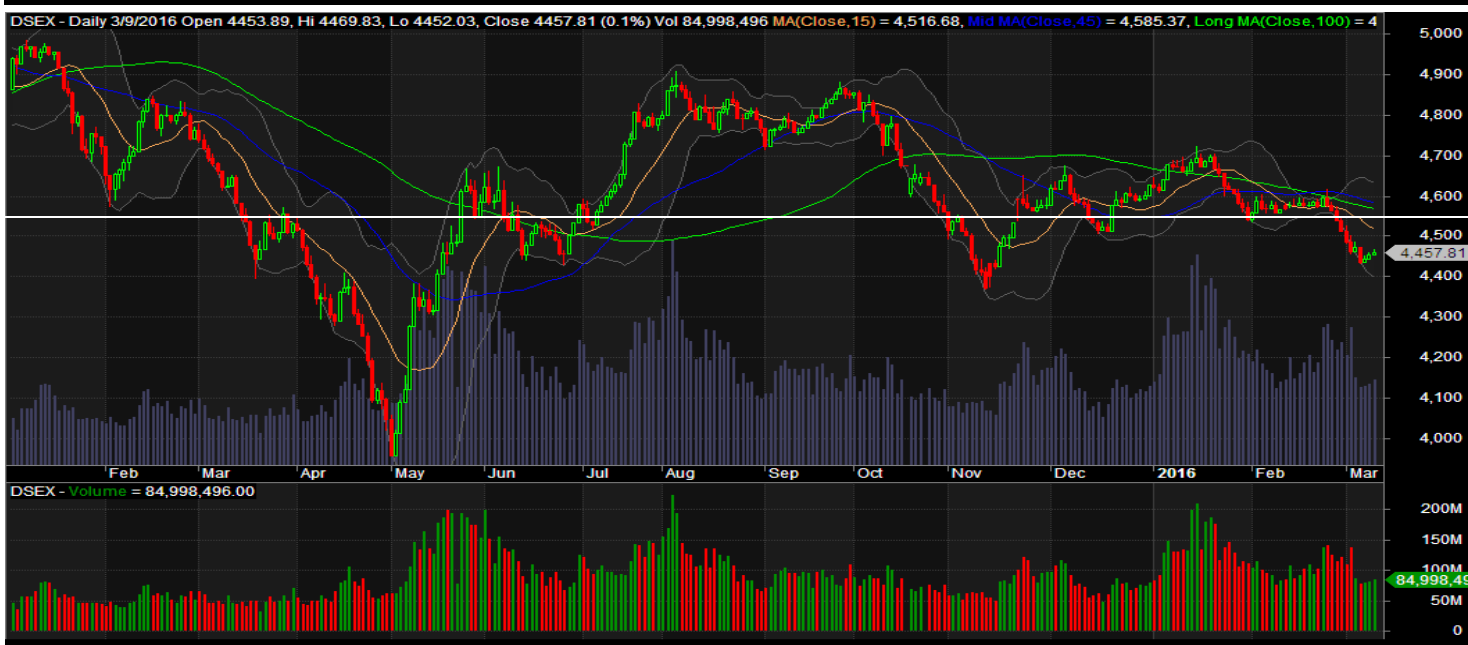
**ICBIBANK:** Dividend Declaration: The Board of Directors has recommended No Dividend for the year ended on December 31, 2015. Date of AGM: 14.06.2016, Time: 10:00 AM, Venue: IZZ Convention Hall, Level-5, Unique Trade Center, 8 Panthapath, Dhaka-1215. Record Date: 17.04.2016. The Company has also reported net profit(loss) after tax of Tk. (141.09) million, EPS of Tk. (0.21), NAV per share of Tk. (14.70) and NOCFPS of Tk. (1.65) for the year ended on December 31, 2015.

## Recent Dividend Declaration

| Ticker  | Dividend      | Record Date |
|---|---------------|-------------|
| IDLC Finance Limited                                      | 25% C         | 13.03.16    |
| Industrial Promotion & Development Co. of Bangladesh Ltd. | 20% B         | 08.03.16    |
| Lanka Bangla Finance Limited                              | 15% C & 15% B | 14.03.16    |
| Dutch Bangla Bank Limited                                 | 40% C         | 15.03.16    |
| Phoenix Finance and Investments Ltd.                      | 20% C         | 31.03.16    |
| Summit Alliance Port Ltd.                                 | 10% B         | 21.03.16    |

Note: C= cash Dividend, B= Bonus Dividend, R=Right, N/A=NotApplicable

## DSEX Technical Graph for last one year



### MTB CAPITAL LIMITED

Corporate head office

Level: 3, MTB Tower, 111, Kazi Nazrul Islam Avenue, Dhaka

Phone: 8321714, Fax: 8321543

[www.mtbcap.com](http://www.mtbcap.com)

*A Mutual Trust Bank Company*

*you can invest with us*

### Disclaimer

This report has been prepared by the MTB Capital Limited (MTBCL) on the basis of available information in the market and it is provided for the purposes only. It is not to be used as an offer for buying or selling any instruments. If anyone takes any action relying on this information, shall be responsible solely by him/her self for any consequences. The best care has been taken to make the report informative. MTBCL doesn't give any warrant or guarantee that the report or such information is fully accurate. The information that are provided here is the exclusive property of MTBCL and can not be distributed without prior consent of MTBCL.