

# Today's Market Overview

Thursday, October 29, 2015

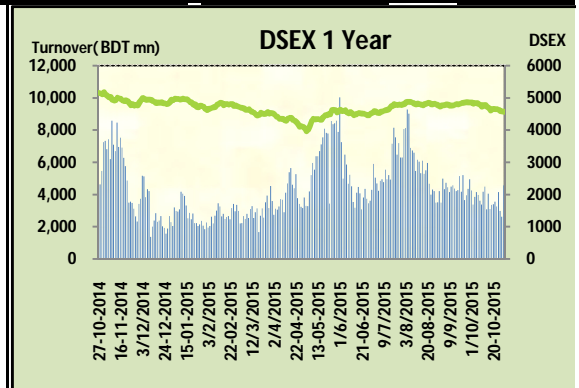


<b>DSEX</b>	4,564.49	-0.33%	<b>Issues Traded</b>	↑ <b>Advanced</b> 114	↓ <b>Declined</b> 151	↔ <b>Unchanged</b> 54
<b>Turnover (BDT mn)</b>	4,560.45	73.7%				

Market remained in the bearish orbit for consecutive fourth trading session with heavily improved turnover though 27% of turnover took place in block market. This suddenly improved turnover vibrated the market during the first hour and DSEX gained almost 30 points but this momentum couldn't sustain long and soon after the midsession market went for the selling bender and closed the market in negative zone. Market observed 4.5 Billion over turnover after nineteen trading sessions. Most of the major & prominent sectors remained in slumbering mood but Bank, Cement & Service tried to get some attention from investors. Other two indices DS30 & DSE the shariah based index both performed very poor. Initial optimism of the investors concluded with bamboozles. Travel was the worst loser followed by IT, Power & Ceramics.

The general gauge DSEX ended at 4564.49 with a decline of -0.3% which cut 14.88 points from the broad DSEX. The Turnover advanced heavily by +73.7% which was 1935 Million BDT healthier than that of previous day and finally finished the mark at 4564.49 million BDT. A total of 114 issues advanced with 151 declined and 54 remained unchanged. Sectors that improved were: Bank (+0.3%) Cement (+0.4%) Service (+1.5%) NBFI (+0.1%) Mutual Fund (+0.2%) Jute (+2.3%) & sectors that declined were: Ceramics (-0.9%) Engineering (-0.3%) Power (-0.9%) Pharmaceuticals (-0.2%) Textile (-0.1%) Travel (-2.5%) Miscellaneous (-0.1%) Insurance (-0.2%) IT (-1.8%)

KPCL topped in the Volume chart with a turnover of 18.41 BDT crore. SAMORITA ranked top gainer chart with a price hike of +10% and SAVAREFR topped in the loser chart with a decline of -14.0% from its prevailing price. LAFSURCEML led the way in the index mover chart while SPCL played the shatter part.



Index Scenario				Market Highlights					
	<b>INDEX</b>	<b>Change</b>	<b>% Changes</b>	<b>DSEX 52 week H/L</b>	5334/3960	<b>Market P/E (LTM)</b>	14.59		
	<b>DSEX</b>	4564.49	(14.88)	-0.3%	<b>DSEX Week H/L</b>	4649/4564	<b>M.Cap (mn)</b>	3168907.9	
	<b>DSES</b>	1092.30	(4.88)	-0.4%	<b>Group Performances</b>				
	<b>DS30</b>	1725.97	(4.87)	-0.3%	<b>Category</b>	<b>Mkt Cap (mn.)</b>	<b>Δ % M.Cap</b>	<b>Turnover BDT (mn)</b>	<b>Δ % Turnover</b>
	<b>Turnover Scenario</b>			<b>Group A</b>	2,444,175.84	-0.2%	2,901.21	31.3%	
<b>Today's Turnover (mn.)</b>	<b>Change In BDT (mn.)</b>	<b>% Change</b>		<b>Group B</b>	13,609.73	-1.9%	160.31	-7.6%	
4560.45	1,935	73.7%		<b>Group N</b>	30,618.98	0.2%	237.96	16.7%	
				<b>Group Z</b>	23,561.02	-2.1%	31.75	9.9%	

Top Ten Volume (in BDT. crore)										
Stock	TT	YT	AT	% Δ in Turnover	TT/AT	CP	YP	% Δ P	Number of shares	Public Holding
KPCL	18.41	2.26	4.44	714.4%	314.5%	73.8	72.6	1.7%	361,284,710.0	13%
SQURPHARMA	14.27	5.41	7.83	164.0%	82.4%	243	242.8	0.1%	623,586,546.0	9%
SPCL	11.72	5.65	5.95	107.4%	97.0%	148.8	160.7	-7.4%	133,137,900.0	19%
IFADAUTOS	10.20	2.77	5.07	268.1%	101.1%	109.3	106.8	2.3%	115,000,000.0	17%
ACI	8.77	1.00	4.53	779.3%	93.4%	556	566.6	-1.9%	39,553,240.3	27%
LAFSURCEML	8.66	12.27	17.10	-29.5%	-49.4%	83.5	82.3	1.5%	1,161,373,500.0	30%
GP	7.12	4.58	8.27	55.7%	-13.9%	248.6	248.6	0.0%	1,350,300,022.0	4%
BXPBARMA	6.69	4.29	15.44	56.0%	-56.7%	71.3	71.3	0.0%	386,244,234.6	50%
BARKAPOWER	6.37	2.34	3.54	171.9%	79.7%	32.2	34.6	-6.9%	153,405,252.0	73%
SINGERBD	6.11	12.98	2.23	-52.9%	173.5%	155.4	155.5	-0.1%	76,694,491.3	20%

TT= Today's Turnover in crore, YT= Yesterday's Turnover in Crore, AT= Average of Last 20 day's Turnover, CP= Current Price, YP= Yesterday's Price, % Δ P= percentage change in price

Top Ten Gainer						Top Ten Loser					
Stock	CP	YP	AP	% Δ P	% Δ in P from AP	Stock	CP	YP	AP	% Δ P	% Δ in P from AP
SAMORITA	89.2	81.1	79.67	10.0%	12.0%	SAVAREFR	43.00	50.00	50.61	-14.0%	-15.0%
DSHGARME	127.5	117.1	94.95	8.9%	34.3%	PENINSULA	16.20	18.60	19.12	-12.9%	-15.3%
GEMINISEA	445	409.2	389.635	8.7%	14.2%	AZIZPIPES	34.40	38.10	35.04	-9.7%	-1.8%
BDAUTOCA	37.8	35.3	36.545	7.1%	3.4%	MEGHNACEM	95.80	106.00	108.92	-9.6%	-12.0%
QSMDRYCELL	73.6	69.6	74.155	5.7%	-0.7%	FAREASTFIN	9.40	10.40	11.06	-9.6%	-15.0%
NCCBLMF1	6	5.7	5.775	5.3%	3.9%	SPCERAMICS	11.40	12.60	12.47	-9.5%	-8.6%
ANLIMAYARN	22.7	21.6	21.4	5.1%	6.1%	LEGACYFOO1	27.00	29.40	31.71	-8.2%	-14.8%
MITHUNKNIT	82.8	79.1	78.625	4.7%	5.3%	FASFIN	9.80	10.60	11.47	-7.5%	-14.6%
NITOLINS	22.5	21.5	22.155	4.7%	1.6%	SPCL	148.80	160.70	160.25	-7.4%	-7.1%
NITOLINS	22.5	21.5	22.155	4.7%	1.6%	MIRACLEIND	25.00	26.90	18.59	-7.1%	34.5%

AP= Average Price of last 20 day,% Δ in P from AP= percentage change in price from the 20-day average price

Industry /Sectors overview (Amounts in BDT. Crore)											
Sector	Trade Volume		MKT Turnover %		% Δ in Turnover	Market Capitalization		% of Total MC		% Δ in MC	
	Today	Yesterday	Today	Yesterday		Today	Yesterday	Today	Yesterday		
Bank	22.12	25.58	0.07	0.10	-13.5%	40311.10	40180.14	16.07%	15.98%	0.3%	
Cement	13.28	16.43	0.04	0.06	-19.2%	15845.32	15788.94	6.32%	6.28%	0.4%	
Ceramics	4.00	3.53	0.01	0.01	13.2%	2659.74	2683.54	1.06%	1.07%	-0.9%	
Engineering	50.08	52.49	0.15	0.20	-4.6%	14394.53	14443.48	5.74%	5.75%	-0.3%	
Food & Allied Product	13.88	8.67	0.04	0.03	60.1%	23934.19	24063.78	9.54%	9.57%	-0.5%	
Insurance	3.68	4.22	0.01	0.02	-12.8%	6870.62	6886.51	2.74%	2.74%	-0.2%	
IT	2.62	1.84	0.01	0.01	41.9%	508.93	518.20	0.20%	0.21%	-1.8%	
Jute	0.54	0.58	0.00	0.00	-6.9%	92.52	90.48	0.04%	0.04%	2.3%	
Miscellaneous	17.29	19.13	0.05	0.07	-9.6%	8174.36	8179.21	3.26%	3.25%	-0.1%	
Mutual Fund	6.56	3.47	0.02	0.01	89.1%	3504.29	3496.83	1.40%	1.39%	0.2%	
NBFI	12.73	8.93	0.04	0.03	42.5%	7921.29	7915.04	3.16%	3.15%	0.1%	
Paper & Printing	1.60	2.55	0.00	0.01	-37.1%	207.84	217.42	0.08%	0.09%	-4.4%	
Pharmaceuticals & Chemicals	45.06	25.43	0.14	0.10	77.2%	40121.99	40212.21	15.99%	16.00%	-0.2%	
Power & Energy	66.57	30.57	0.20	0.12	117.8%	36629.67	36961.16	14.60%	14.70%	-0.9%	
Service & Real Estate	10.18	5.49	0.03	0.02	85.5%	1834.13	1807.88	0.73%	0.72%	1.5%	
Tannery	5.10	6.02	0.02	0.02	-15.3%	2481.28	2519.67	0.99%	1.00%	-1.5%	
Telecommunication	8.20	5.73	0.02	0.02	43.3%	35153.05	35166.54	14.01%	13.99%	0.0%	
Textile	39.52	30.43	0.12	0.12	29.9%	8063.61	8071.20	3.21%	3.21%	-0.1%	
Travel & Leisure	6.92	7.19	0.02	0.03	-3.8%	2142.99	2198.69	0.85%	0.87%	-2.5%	

MC= Market Capitalization, % Δ in Turnover= change in turnover from last day, % Δ in MC= change in Market cap from last day

Index Movers	Index Shakers	Sector wise P/E			
LAFSURCEML	SPCL	Bank	9.51	NBFI	37.79
BRACBANK	MJLBD	Cement	34.38	Paper & Printing	76.85
UPGDCL	OLYMPIC	Ceramics	48.02	Pharmaceuticals & Chemicals	27.50
DUTCHBANGL	TITASGAS	Engineering	28.12	Power & Energy	15.11
POWERGRID	ACI	Food & Allied Product	32.21	Service & Real Estate	41.52
BERGERPBL	BARKAPOWER	Insurance	14.55	Tannery	55.51
KPCL	BEXIMCO	IT	18.96	Telecommunication	23.83
DBH	ISLAMIBANK	Jute	114.55	Textile	17.20
IDLC	HEIDELBCEM	Miscellaneous	33.59	Travel & Leisure	13.99
IFADAUTOS	PRIMEBANK				

## Important News

### Company News:

**SPCL: Dividend Declaration:** The Board of Directors has recommended 28% cash dividend and 3% stock dividend for the year ended on June 30, 2015. Date of the AGM: 08.02.2016, Time: 11:00 AM, Venue: KIB Complex Auditorium, Krishi Khamar Road, Farmgate, Dhaka-1215. Record date: 07.12.2015 The Company has also reported Net Profit after Tax of Tk. 958.92 million, EPS of Tk. 7.20, NAV per share of Tk. 30.60 and NOCFPS of Tk. 1.53 for the year ended on June 30, 2015 as against Tk. 470.92 million, Tk. 3.91 (restated), Tk. 28.17 and Tk. 16.42 respectively for the year ended on June 30, 2014

**OLYMPIC: Dividend Declaration:** The Board of Directors has recommended 30% cash dividend and 20% stock dividend for the year ended on June 30, 2015. Date of AGM: 17.12.2015, Time: 10:00 AM, Venue: Battery Factory premises at Kutubpur, Kanchpur, Sonargaon, Narayanganj. Record Date: 22.11.2015. The Company has also reported EPS of Tk. 6.90, NAV per share of Tk. 21.31 and NOCFPS of Tk. 7.81 for the year ended on June 30, 2015 as against Tk. 5.48, Tk. 21.46 and Tk. 7.49 respectively for the year ended on June 30, 2014.

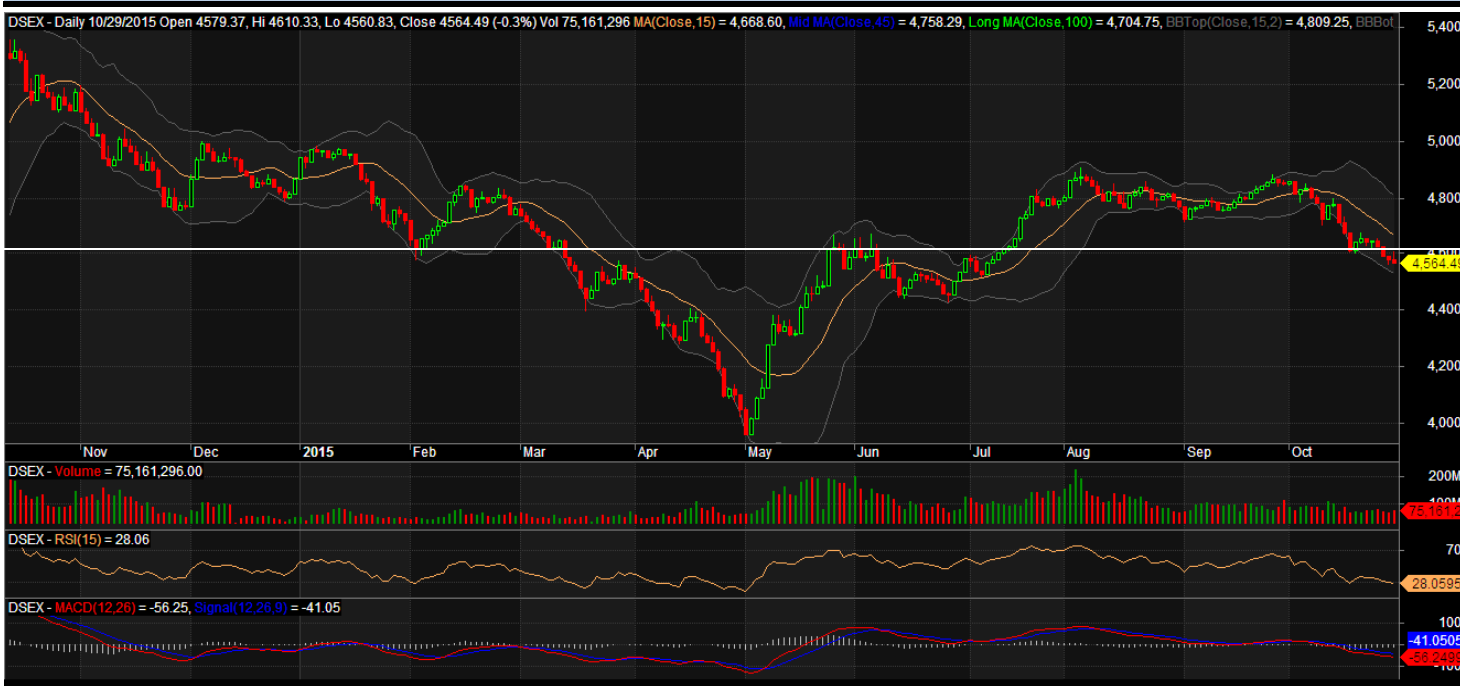
**SAIHAMTEX: Dividend Declaration:** The Board of Directors has recommended 15% stock dividend for the year ended on June 30, 2015. Date of AGM: 20.12.2015, Time: 11:30 AM, Venue: Mill Premises, Noyapara, Saihamnagar, Madhabpur, Habiganj. Record Date: 19.11.2015. The Company has also reported EPS of Tk. 1.06, NAV per share of Tk. 32.09 and NOCFPS of Tk. 6.50 for the year ended on June 30, 2015 as against Tk. 2.81, Tk. 32.53 and Tk. 1.42 respectively for the year ended on June 30, 2014.

## Recent Dividend Declaration

Ticker	Dividend	Record Date
Paramount Textile Limited	16% C	15.11.2015
IFAD Autos Limited	7% C & 30% B	15.11.2015
Aamra technologies limited	10% C	16.11.2015
Anlimayam Deying Ltd.	10% C	15.11.15
Rahim Textile Mills Ltd.	40% B	17.11.15
CVO Petrochemical Refinery Limited	15% C & 25% B	15.11.15
Fu-Wang Foods Limited	15% B	19.11.15
Others PP Woven Bag Industries	15% B	23.11.15

Note: C= cash Dividend, B= Bonus Dividend, R=Right, N/A=NotApplicable

## DSEX Technical Graph for last one year



### MTB CAPITAL LIMITED

Corporate head office

Level: 3, MTB Tower, 111, Kazi Nazrul Islam Avenue, Dhaka

Phone: 8321714, Fax: 8321543

[www.mtbcap.com](http://www.mtbcap.com)

*A mutual Trust Bank Company*

*you can invest with US*

## Disclaimer

This report has been prepared by the MTB Capital Limited (MTBCL) on the basis of available information in the market and it is provided for the purposes only. It is not to be used as an offer for buying or selling any instruments. If anyone takes any action relying on this information, shall be responsible solely by him/her self for any consequences. The best care has been taken to make the report informative. MTBCL doesn't give any warrant or guarantee that the report or such information is fully accurate. The information that are provided here is the exclusive property of MTBCL and can not be distributed without prior consent of MTBCL.