

Today's Market Overview

Wednesday, October 21, 2015

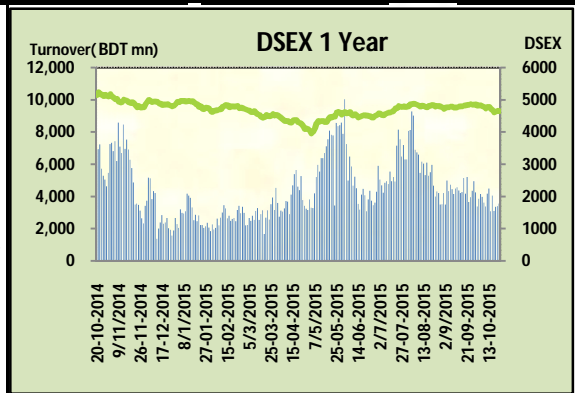


DSEX	4,647.68	-0.21%	Issues Traded	Advanced	Declined	Unchanged
Turnover (BDT mn)	3,561.79	5.0%		151	131	33

Two day' gaining streak defeated today as big cap stocks failed to click today. The premier bourse of the nation opened with a negative mood and continued the same mood till the closure. Turnover increased as small cap stocks attracted the investors. Among the major sectors NBFI & Ceramics helped to close the market in marginal Territory. Other two indices DS30 & DSES the shariah based index both performed poor. Investors remained outside the market as third quarter earnings of different stock started to come with mixed performances. Most of the Major & prominent sectors put a mixed performance Bank, Telecom & Pharmaceuticals were poor while NBFI, Ceramics & Service put a good show.

The general gauge DSEX ended at 4647.68 with a decline of -0.2% which cut 9.98 points from the broad DSEX. The Turnover advanced slightly by +5.0% which was 170 Million BDT healthier than that of previous day and finally finished the mark at 3561.79 million BDT. A total of 151 issues advanced with 131 declined and 33 remained unchanged. Sectors that improved were: Ceramics (+1.9%) Engineering (+0.6%) Textile (+0.5%) NBFI (+1.2%) Travel (+1.1%) Service (+0.8%) IT (+3.5%) Insurance (+1.4%) & sectors that declined were: Bank (-1.1%) Cement (-0.6%) Power (-0.3%) Pharmaceuticals (-0.2%) Telecom (-1.3%) Miscellaneous (-1.7%).

LAFSUCEML topped in the Volume chart with a turnover of 22.69 BDT crore. ORIONINFU ranked top gainer chart with a price hike of +9.9% and 3RDICB topped in the loser chart with a decline of -7.6% from its prevailing price. RAKCERAMIC led the way in the index mover chart while GP played the shatter part.



Index Scenario				Market Highlights				
INDEX	Change	% Changes		DSEX 52 week H/L	5334/3960	Market P/E (LTM)	15.13	
DSEX	4647.68	(9.98)	-0.2%	DSEX Week H/L	4677/4608	M.Cap (mn)	3220018.6	
DSES	1113.25	(2.27)	-0.2%	Group Performances				
DS30	1762.55	(4.30)	-0.2%	Category	Mkt Cap (mn.)	Δ % M.Cap	Turnover BDT (mn)	Δ % Turnover
Turnover Scenario				Group A	2,490,487.40	-0.5%	2,901.80	-0.6%
Today's Turnover (mn.)	Change In BDT (mn.)	% Change		Group B	13,579.26	0.4%	67.41	-5.5%
3561.79	170	5.0%		Group N	32,590.23	1.5%	344.61	9.3%
				Group Z	24,251.80	1.1%	21.23	-24.2%

Top Ten Volume (in BDT. crore)										
Stock	TT	YT	AT	% Δ in Turnover	TT/AT	CP	YP	% Δ P	Number of shares	Public Holding
LAFSURCEML	22.69	26.56	16.76	-14.6%	35.4%	89.3	89.6	-0.3%	1,161,373,500.0	30%
BXPHERMA	15.47	11.52	16.62	34.2%	-6.9%	72.3	71.4	1.3%	386,244,234.6	50%
KDSALTD	14.65	6.70	18.65	118.8%	-21.4%	76.4	73.4	4.1%	52,000,000.0	21%
SPCL	9.26	10.26	4.91	-9.8%	88.7%	158.8	158.2	0.4%	133,137,900.0	19%
AMANFEED	8.85	10.72	6.90	-17.5%	28.3%	61.7	61.9	-0.3%	80,000,000.0	23%
BENGALWTL	8.27	2.76	1.38	199.7%	498.3%	73.5	68.5	7.3%	75,600,000.0	16%
SAIFPOWER	8.09	3.50	10.59	130.8%	-23.6%	68.2	65.7	3.8%	70,985,380.0	19%
UCBL	8.00	2.33	5.61	243.7%	42.8%	21.3	22	-3.2%	1,003,933,957.2	58%
GP	7.94	9.52	10.05	-16.6%	-21.0%	254.5	258.2	-1.4%	1,350,300,022.0	4%
FARCHEM	7.84	4.54	10.66	72.8%	-26.4%	37.4	35.5	5.4%	109,237,878.0	12%

TT= Today's Turnover in crore, YT= Yesterday's Turnover in Crore, AT= Average of Last 20 day's Turnover, CP= Current Price, YP= Yesterday's Price, % Δ P= percentage change in price

Top Ten Gainer						Top Ten Loser					
Stock	CP	YP	AP	% Δ P	% Δ in P from AP	Stock	CP	YP	AP	% Δ P	% Δ in P from AP
ORIONINFU	51.2	46.6	53.685	9.9%	-4.6%	3RDICB	221.00	239.10	273.16	-7.6%	-19.1%
EXIMISTMF	5.8	5.3	5.335	9.4%	8.7%	ANWARGALV	64.30	67.80	68.34	-5.2%	-5.9%
PADMALIFE	34.9	32.2	30.265	8.4%	15.3%	KAY&QUE	16.90	17.80	15.54	-5.1%	8.8%
FEKDIL	25.9	24	23.59	7.9%	9.8%	IFIC	21.70	22.70	23.10	-4.4%	-6.1%
AZIZPIPES	45.5	42.4	30.635	7.3%	48.5%	STANCERAM	44.00	45.90	47.95	-4.1%	-8.2%
BENGALWTL	73.5	68.5	69.15	7.3%	6.3%	APEXFOODS	108.90	113.60	126.13	-4.1%	-13.7%
CITYGENINS	13	12.3	12.675	5.7%	2.6%	MONNOCERA	37.30	38.90	42.23	-4.1%	-11.7%
ICB	135.3	128.3	133.255	5.5%	1.5%	PREMIERCEM	88.10	91.80	91.25	-4.0%	-3.5%
SUNLIFEINS	29	27.5	28.545	5.5%	1.6%	PRIMETEX	16.90	17.50	17.79	-3.4%	-5.0%
FARCHEM	37.4	35.5	42.65	5.4%	-12.3%	SONARGAON	8.80	9.10	9.41	-3.3%	-6.4%

AP= Average Price of last 20 day,% Δ in P from AP= percentage change in price from the 20-day average price

Industry /Sectors overview (Amounts in BDT. Crore)											
Sector	Trade Volume		MKT Turnover %		% Δ in Turnover	Market Capitalization		% of Total MC		% Δ in MC	
	Today	Yesterday	Today	Yesterday		Today	Yesterday	Today	Yesterday		
Bank	35.00	31.98	0.11	0.10	9.4%	40994.26	41432.31	16.03%	16.13%	-1.1%	
Cement	27.41	30.02	0.08	0.09	-8.7%	16674.08	16769.37	6.52%	6.53%	-0.6%	
Ceramics	6.34	4.33	0.02	0.01	46.4%	2723.93	2672.69	1.07%	1.04%	1.9%	
Engineering	60.19	48.52	0.18	0.15	24.1%	14975.73	14886.41	5.86%	5.80%	0.6%	
Food & Allied Product	13.34	13.06	0.04	0.04	2.1%	24077.81	24346.26	9.42%	9.48%	-1.1%	
Insurance	5.54	3.88	0.02	0.01	42.6%	7010.21	6910.02	2.74%	2.69%	1.4%	
IT	2.96	1.81	0.01	0.01	63.6%	529.23	511.48	0.21%	0.20%	3.5%	
Jute	0.47	1.00	0.00	0.00	-53.3%	98.04	99.03	0.04%	0.04%	-1.0%	
Miscellaneous	15.65	18.13	0.05	0.06	-13.6%	8479.27	8628.41	3.32%	3.36%	-1.7%	
Mutual Fund	3.88	4.73	0.01	0.01	-18.0%	3504.50	3498.05	1.37%	1.36%	0.2%	
NBFI	15.30	12.05	0.05	0.04	27.0%	8114.65	8018.60	3.17%	3.12%	1.2%	
Paper & Printing	0.53	0.67	0.00	0.00	-21.4%	198.34	196.69	0.08%	0.08%	0.8%	
Pharmaceuticals & Chemicals	45.43	41.22	0.14	0.13	10.2%	40541.10	40603.37	15.85%	15.81%	-0.2%	
Power & Energy	37.81	43.72	0.11	0.14	-13.5%	37046.54	37148.38	14.49%	14.46%	-0.3%	
Service & Real Estate	10.72	6.47	0.03	0.02	65.8%	1899.86	1884.13	0.74%	0.73%	0.8%	
Tannery	3.28	3.33	0.01	0.01	-1.7%	2503.99	2501.90	0.98%	0.97%	0.1%	
Telecommunication	9.28	10.96	0.03	0.03	-15.3%	35990.20	36477.82	14.07%	14.20%	-1.3%	
Textile	28.00	39.20	0.08	0.12	-28.6%	8125.13	8087.32	3.18%	3.15%	0.5%	
Travel & Leisure	8.62	5.35	0.03	0.02	61.0%	2221.82	2197.91	0.87%	0.86%	1.1%	

MC= Market Capitalization, % Δ in Turnover= change in turnover from last day, % Δ in MC= change in Market cap from last day

Index Movers	Index Shakers	Sector wise P/E			
RAKCERAMIC	GP	Bank	8.97	NBFI	31.53
BENGALWTL	BATBC	Cement	36.47	Paper & Printing	65.02
LANKABAFIN	SQURPHARMA	Ceramics	37.45	Pharmaceuticals & Chemicals	26.98
BXPBARMA	BERGERPBL	Engineering	34.04	Power & Energy	15.43
RENATA	UPGDCL	Food & Allied Product	34.90	Service & Real Estate	41.68
NATLIFEINS	OLYMPIC	Insurance	14.42	Tannery	33.97
ORIONPHARM	BRACBANK	IT	17.08	Telecommunication	24.42
TITASGAS	MJLBD	Jute	162.21	Textile	16.97
ICB	UCBL	Miscellaneous	33.90	Travel & Leisure	14.47
ENVOYTEX	MARICO				

Important News

Company News:

EBL: Q3 Financials:(Q3 Un-audited): Consolidated EPS was Tk. 1.35 for July-September, 2015 as against Tk. 0.55 for July-September, 2014; Consolidated EPS was Tk. 3.38 for January-September, 2015 as against Tk. 2.10 for January-September, 2014. Consolidated NOCFPS was Tk. 0.79 for January-September, 2015 as against Tk. (25.77) for January-September, 2014. Consolidated NAV per share was Tk. 36.24 as of September 30, 2015 and Tk. 31.85 as of September 30, 2014.

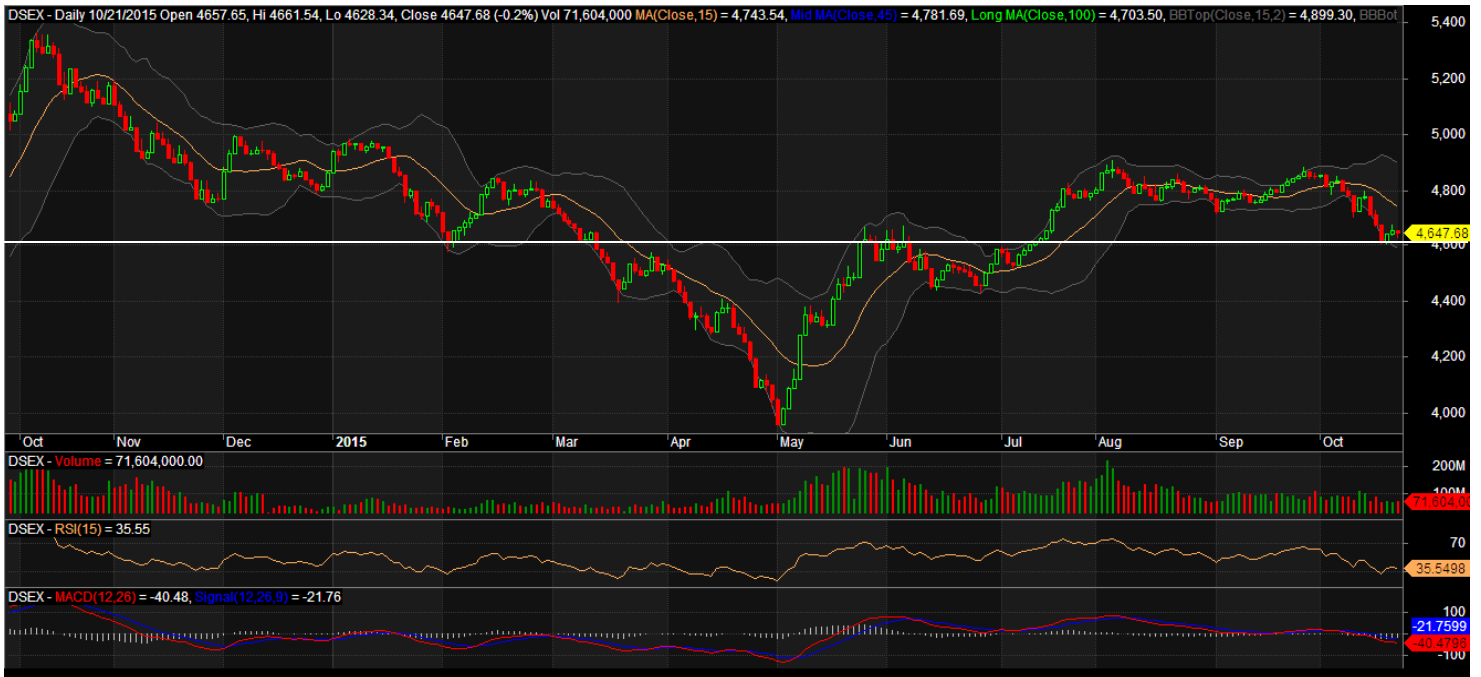
ALARABANK: Q3 Financials:(Q3 Un-audited): Consolidated EPS was Tk. 0.40 for July-September, 2015 as against Tk. (0.24) for July-September, 2014; Consolidated EPS was Tk. 1.15 for January-September, 2015 as against Tk. 1.01 for January-September, 2014. Consolidated NOCFPS was Tk. 6.43 for January-September, 2015 as against Tk. 5.16 for January-September, 2014. Consolidated NAV per share was Tk. 19.36 as of September 30, 2015 and Tk. 18.80 as of September 30, 2014.

Recent Dividend Declaration

Ticker	Dividend	Record Date
Beach Hatchery Ltd.	5%B	28.10.15

Note: C= cash Dividend, B= Bonus Dividend, R=Right, N/A=NotApplicable

DSEX Technical Graph for last one year



MTB CAPITAL LIMITED

Corporate head office

Level: 3, MTB Tower, 111, Kazi Nazrul Islam Avenue, Dhaka

Phone: 8321714, Fax: 8321543

www.mtbcap.com

A mutual Trust Bank Company

you can invest with US

Disclaimer

This report has been prepared by the MTB Capital Limited (MTBCL) on the basis of available information in the market and it is provided for the purposes only. It is not to be used as an offer for buying or selling any instruments. If anyone takes any action relying on this information, shall be responsible solely by him/her self for any consequences. The best care has been taken to make the report informative. MTBCL doesn't give any warrant or guarantee that the report or such information is fully accurate. The information that are provided here is the exclusive property of MTBCL and can not be distributed without prior consent of MTBCL.