

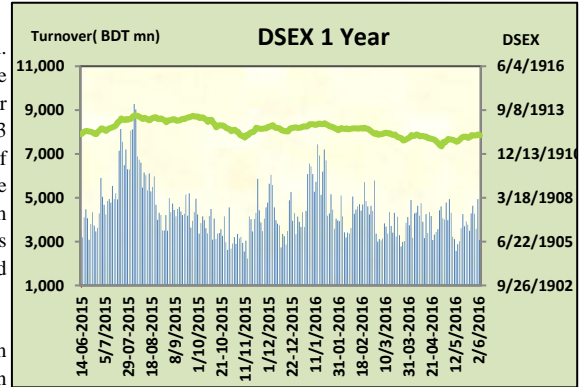
# Today's Market Overview



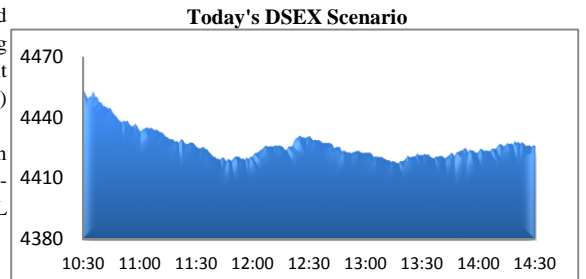
Sunday, June 05, 2016

<b>DSEX</b>	4,425.89	-0.45%	<b>Issues Traded</b>	↑ <b>Advanced</b>	↓ <b>Declined</b>	↔ <b>Unchanged</b>
<b>Turnover (BDT mn)</b>	3,078.72	-37.62%		71	190	53

Market dipped below the red zone with a very sluggish turnover just after the fiscal policy declaration. The premier bourse of the nation opened with a negative mood and continued the same mood till the close. After the budget declaration premier bourse of the nation opened with a negative mood moreover the participation was very poor throughout the session and last hour portentousness helped to cross the 3 billion. Turnover hit the eleven days lowest level as most of the major sectors failed to perform. Most of the investors were in observation mood before the month of Ramadan. Notable concentration took place in Engineering sectors while other sectors suffered from participation. Engineering, Bank & Telecom tried to keep the price level positive while IT, Cement & Textiles were in severity. Other two indices DS30 & DSES the shariah based index both failed to perform. Engineering was the best gainer followed by Insurance & bank while IT was the worst loser followed by Cement & Textiles.



The general gauge DSEX ended at 4425.89 with a decline of -0.45% which cut only 20.19 points from the broad DSEX. The Turnover declined heavily by -37.6% which was 1857 Million BDT poorer than that of previous day and finally finished the mark at 3078.72 million BDT. A total of 71 issues advanced with 190 declined and 53 remained unchanged. Sectors that improved were: Bank (+0.12%) Engineering (+0.88%) Insurance (+0.31%) NBFI (+0.02%) Telecom (+0.05%) & Sectors that declined were: Cement (-2.30%) Ceramics (-1.19%) Food (-0.019%) IT (-3.37%) Paper (-1.181%) Pharmaceuticals (-0.20%) Power (-0.39%) Service (-1.36%) Textiles (-1.83%) Travel (-1.42%)



BSRMLTD topped in the Volume chart with a turnover of 20.93 BDT crore. UNITEDINS ranked top in gainer chart with a price hike of +7.9% and ASIAPACINS topped in the loser chart with a decline of -8.6% from its prevailing price. BSRLLED led the way in the index mover chart while LAFSURCEML played the shatter part.

Index Scenario				Market Highlights				
	INDEX	Change	% Changes	DSEX 52 week H/L	4874/3960	Market P/E (LTM)	13.33	
DSEX	4425.89	(20.19)	-0.45%	DSEX Week H/L	4366/4427	M.Cap	3115208.8	
DSES	1088.53	(8.45)	-0.77%	<b>Group Performances</b>				
DS30	1747.33	(13.86)	-0.79%	Category	Mkt Cap (mn.)	Δ % M.Cap	Turnover BDT (mn)	Δ % Turnover
<b>Turnover Scenario</b>				Group A	2,364,727.00	-0.3%	2,661.22	-35.6%
Today's Turnover (mn.)	Change In BDT (mn.)	% Change		Group B	10,661.91	-0.4%	45.15	-11.2%
3078.72	(1,857)	-37.6%		Group N	41,875.84	-1.7%	202.35	-32.1%
				Group Z	37,489.28	-0.7%	100.16	-8.3%

Top Ten Volume (in BDT. crore)										
Stock	TT	YT	AT	% Δ in Turnover	TT/AT	CP	YP	% Δ P	Number of shares	Public Holding
BSRMLTD	20.93	5.54	11.71	277.9%	78.7%	142	134.3	5.7%	274,244,180.0	9%
LAFSURCEML	14.31	17.37	12.78	-17.6%	11.9%	78.7	81.6	-3.6%	362,944,698.6	5%
TITASGAS	12.27	16.78	7.24	-26.9%	69.5%	47.8	49.2	-2.8%	15,218,280.0	19%
SPCL	11.99	28.52	11.31	-58.0%	6.0%	137.2	137.2	0.0%	341,775,000.0	13%
DOREENPWR	7.85	9.40	8.78	-16.6%	-10.6%	64.9	66.7	-2.7%	190,686,141.8	9%
KBPPWBIL	7.49	8.99	4.72	-16.7%	58.7%	25.4	24.3	4.5%	276,739,950.1	61%
UNITEDAIR	6.97	17.85	4.62	-60.9%	51.0%	6.6	6.9	-4.3%	137,132,037.0	19%
GPHISPAT	6.85	4.61	1.62	48.5%	323.0%	29.6	29.4	0.7%	190,417,988.2	27%
POWERGRID	6.43	7.02	2.98	-8.4%	115.9%	59.8	58.3	2.6%	294,400,000.0	24%
UPGDCL	6.30	13.93	15.02	-54.7%	-58.0%	145.2	148.1	-2.0%	54,285,000.0	38%

TT= Today's Turnover in crore, YT= Yesterday's Turnover in Crore, AT= Average of Last 20 day's Turnover, CP= Current Price, YP= Yesterday's Price, % Δ P= percentage change in price

**Top Ten Gainer****Top Ten Loser**

Stock	CP	YP	AP	% Δ P	% Δ in P from AP	Stock	CP	YP	AP	% Δ P	% Δ in P from AP
UNITEDINS	21.9	20.3	20.885	7.9%	4.9%	ASIAPACINS	13.90	15.20	14.33	-8.6%	-3.0%
ATLASBANG	116.7	109.7	107.155	6.4%	8.9%	FBFIF	5.90	6.30	5.99	-6.3%	-1.5%
BSRMLTD	142	134.3	136.36	5.7%	4.1%	SAFKOSPINN	12.60	13.40	11.73	-6.0%	7.4%
LEGACYFOOT	30	28.7	26.66	4.5%	12.5%	1STPRIMFMF	8.40	8.90	8.12	-5.6%	3.4%
KBPPWBIL	25.4	24.3	18.895	4.5%	34.4%	DAFODILCOM	23.20	24.50	21.32	-5.3%	8.8%
RUPALILIFE	37.4	36	34.57	3.9%	8.2%	INTECH	11.70	12.30	11.51	-4.9%	1.7%
SUNLIFEINS	31.1	30	29.55	3.7%	5.2%	PTL	16.80	17.60	15.77	-4.5%	6.6%
PRAGATILIF	142.8	138	142.26	3.5%	0.4%	CMCKAMAL	14.90	15.60	14.52	-4.5%	2.6%
BANKASIA		14.7	14.3		NM	HFL	17.40	18.20	15.97	-4.4%	9.0%
FAREASTLIF	69.5	67.3	66.52	3.3%	4.5%	PRIMETEX	17.50	18.30	17.88	-4.4%	-2.1%

AP= Average Price of last 20 day,% Δ in P from AP= percentage change in price from the 20-day average price

**Industry /Sectors overview (Amounts in BDT. Crore)**

Sector	Trade Volume		MKT Turnover %		% Δ in Turnover	Market Capitalization		% of Total MC		% Δ in MC
	Today	Yesterday	Today	Yesterday		Today	Yesterday	Today	Yesterday	
Bank	15.08	20.16	0.05	0.04	-25.19%	36924.11	36881.25	15.07%	15.01%	0.12%
Cement	16.81	23.13	0.06	0.05	-27.32%	14901.37	15252.95	6.08%	6.21%	-2.30%
Ceramics	1.52	2.85	0.01	0.01	-46.62%	2480.36	2510.32	1.01%	1.02%	-1.19%
Engineering	54.93	41.23	0.18	0.09	33.22%	14735.73	14607.56	6.01%	5.94%	0.88%
Food & Allied Product	8.34	19.19	0.03	0.04	-56.54%	24040.62	24085.59	9.81%	9.80%	-0.19%
Insurance	7.23	8.16	0.02	0.02	-11.46%	6757.58	6736.54	2.76%	2.74%	0.31%
IT	8.72	11.38	0.03	0.03	-23.37%	966.50	1000.20	0.39%	0.41%	-3.37%
Jute	0.52	0.70	0.00	0.00	-26.01%	80.95	81.34	0.03%	0.03%	-0.48%
Miscellaneous	20.47	44.33	0.07	0.10	-53.83%	8212.72	8259.24	3.35%	3.36%	-0.56%
Mutual Fund	2.00	5.43	0.01	0.01	-63.24%	3631.92	3679.35	1.48%	1.50%	-1.29%
NBFI	10.94	10.84	0.04	0.02	0.91%	7675.93	7674.24	3.13%	3.12%	0.02%
Paper & Printing	0.28	0.22	0.00	0.00	26.58%	152.89	155.71	0.06%	0.06%	-1.81%
Pharmaceuticals & Chemicals	32.61	69.87	0.11	0.15	-53.32%	40075.83	40154.83	16.36%	16.34%	-0.20%
Power & Energy	66.43	106.95	0.22	0.24	-37.88%	34616.65	34752.95	14.13%	14.14%	-0.36%
Service & Real Estate	6.63	10.41	0.02	0.02	-36.32%	1668.96	1691.93	0.68%	0.69%	-1.36%
Tannery	3.29	2.82	0.01	0.01	16.68%	2208.36	2219.12	0.90%	0.90%	-0.48%
Telecommunication	6.21	16.57	0.02	0.04	-62.52%	36431.02	36414.62	14.87%	14.82%	0.05%
Textile	27.73	40.91	0.09	0.09	-32.20%	7457.38	7596.09	3.04%	3.09%	-1.85%
Travel & Leisure	7.92	19.79	0.03	0.04	-59.97%	2010.02	2038.90	0.82%	0.83%	-1.42%

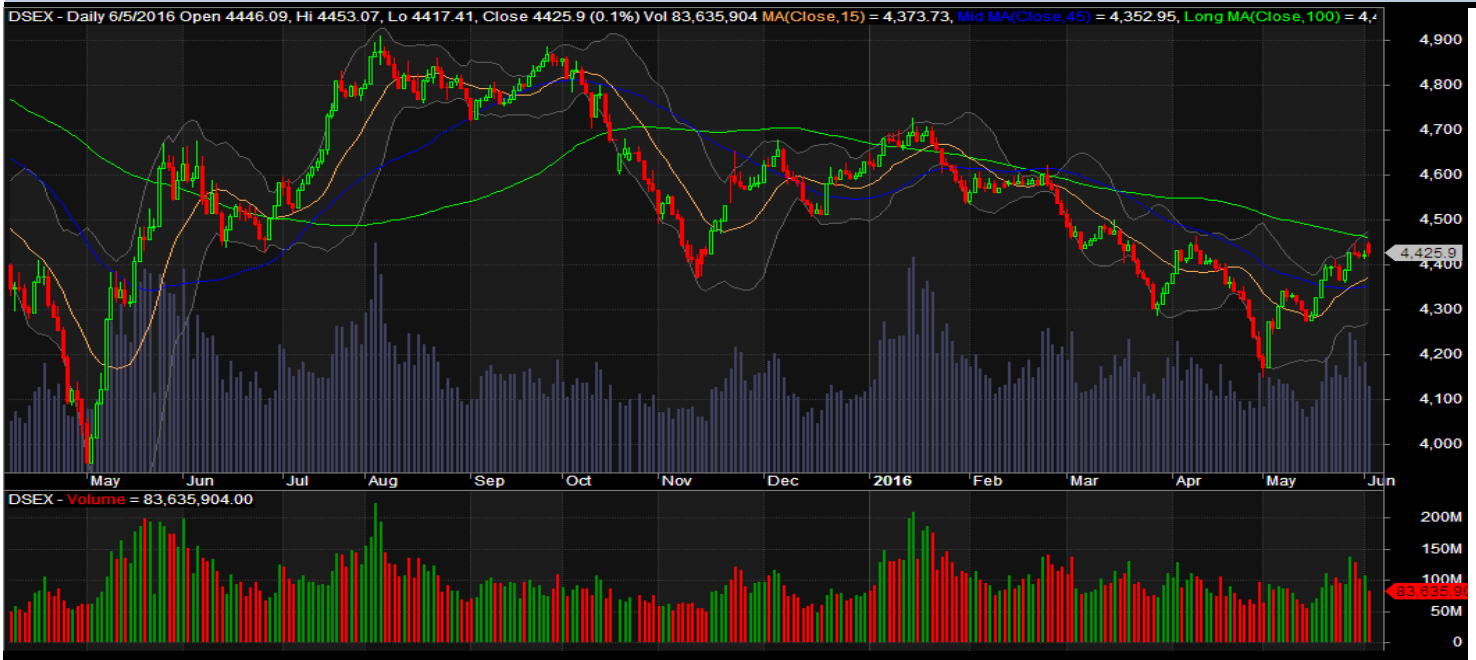
MC= Market Capitalization, % Δ in Turnover= change in turnover from last day, % Δ in MC= change in Market cap from last day

Index Movers	Index Shakers	Sector wise P/E (Fd.)			
BSRMLTD	LAFSURCEML	Bank	10.30	NBFI	18.73
BRACBANK	TITASGAS	Cement	34.12	Paper & Printing	109.89
POWERGRID	UPGDCL	Ceramics	35.77	Pharmaceuticals & Chemicals	25.06
GP	MJLBD	Engineering	30.78	Power & Energy	16.88
BSRMSTEEL	BSCCL	Food & Allied Product	26.85	Service & Real Estate	25.52
DESCO	BXPHERMA	Insurance	12.44	Tannery	37.84
BANKASIA	BEXIMCO	IT	48.95	Telecommunication	23.08
JAMUNAOIL	SINGERBD	Jute	381.05	Textile	16.29
MPETROLEUM	ISLAMIBANK	Miscellaneous	30.19	Travel & Leisure	22.71
DUTCHBANGLA	OLYMPIC				

**Important News****Recent Dividend Declaration****Company News:**

Ticker	Dividend	Record Date
City Bank Limited	22%C	12.06.2016
IFIC Bank Limited	12%B	12.06.2016
Salvo Chemical Industry Limited	5%B	06.06.2016
Tosrifa Industries Limited	12%C	07.06.2016
JMI Syringes and Medical Devices Limited	25%C	12.06.2016

Note: C= cash Dividend, B= Bonus Dividend, R=Right, N/A=NotApplicable

**DSEX Technical Graph for last one year****MTB CAPITAL LIMITED**

Corporate head office

Level: 3, MTB Tower, 111, Kazi Nazrul Islam Avenue, Dhaka

Phone: 8321714, Fax: 8321543

[www.mtbcap.com](http://www.mtbcap.com)

*A Mutual Trust Bank Company*

*you can invest with us*

**Disclaimer**

This report has been prepared by the MTB Capital Limited (MTBCL) on the basis of available information in the market and it is provided for the purposes only. It is not to be used as an offer for buying or selling any instruments. If anyone takes any action relying on this information, shall be responsible solely by him/her self for any consequences. The best care has been taken to make the report informative. MTBCL doesn't give any warrant or guarantee that the report or such information is fully accurate. The information that are provided here is the exclusive property of MTBCL and can not be distributed without prior consent of MTBCL.