

Today's Market Overview

Wednesday, November 25, 2015

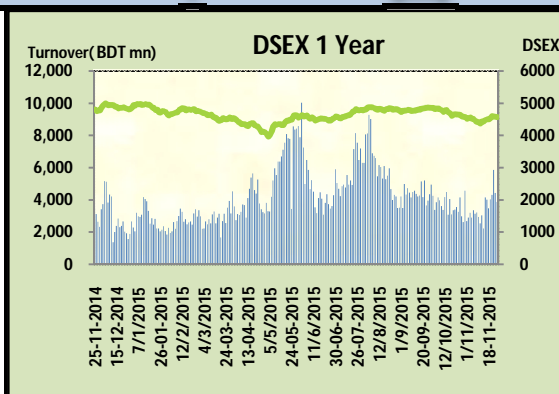


DSEX	4,568.01	-0.13%	Issues Traded	Advanced	Declined	Unchanged
Turnover (BDT mn)	3,878.42	-12.46%		114	153	51

Market continued the losing streak for the consecutive third trading sessions with a very sluggish turnover as investors participation again fallen down. The premier bourse of the nation opened with a positive notion but soon after the half an hour it started to dig down and continued the same mood till the closure, during midsession market got buoyancy but failed to keep that in last hour. Most of the major sectors performed very poor. Other two indices DS30 & DSES the shariah based index both performed poor. Turnover again dive below 4 billion mark. NBFI continued the concentration while Power, Service & Ceramics upset the investors. Market Behavior again frustrated the investors and thus lead to poor participation.

The general gauge DSEX ended at 4568.01 with a decline of -0.1% which cut 6.05 points from the broad DSEX. The Turnover declined heavily by -12.5% which was 552 Million BDT poorer than that of previous day and finally finished the mark at 3878.42 million BDT. A total of 114 issues advanced with 153 declined and 51 remained unchanged. Sectors that improved were: NBFI (+1.7%) Telecom (+0.2%) Mutual Fund (+0.6%) Pharmaceuticals (+0.1%) Travel (+0.7%) & sectors that declined were: Bank (-0.1%) Cement (-0.1%) Ceramics (-1.1%) Service (-0.5%) Power (-1.3%) Miscellaneous (-0.8%) IT (-0.2%)

IFADAUTOS topped in the Volume chart with a turnover of 18.63 BDT crore. 1STPRIMFMF ranked top gainer chart with a price hike of +10.0% and NTLTUBES topped in the loser chart with a decline of -17.0% from its prevailing price. MICEMENT led the way in the index mover chart while TITASGAS played the shatter part.



Index Scenario				Market Highlights			
INDEX	Change	% Changes		DSEX 52 week H/L	4992/3960	Market P/E (LTM)	14.80
DSEX	4568.01	(6.05)	-0.1%	DSEX Week H/L	4597/4531	M.Cap (mn)	3149896.2
DSES	1098.49	(4.34)	-0.4%	Group Performances			
DS30	1727.95	(5.08)	-0.3%	Category	Mkt Cap (mn.)	Δ % M.Cap	Turnover BDT (mn)
Turnover Scenario				Group A	2,436,432.28	-0.2%	3,249.64
Today's Turnover (mn.)	Change In BDT (mn.)	% Change		Group B	13,016.17	-0.4%	53.61
3878.42	(552)	-12.5%		Group N	33,809.60	2.9%	453.54
				Group Z	23,308.35	-1.8%	26.28

Top Ten Volume (in BDT. crore)											
Stock	TT	YT	AT	% Δ in Turnover	TT/AT	CP	YP	% Δ P	Number of shares	Public Holding	
IFADAUTOS	18.63	16.12	19.76	15.5%	-5.7%	109.1	105.4	3.5%	149,500,000.0	17%	
KDSALTD	13.71	6.32	8.38	116.9%	63.6%	81.9	76.7	6.8%	52,000,000.0	21%	
ALARABANK	12.68	20.47	2.32	-38.1%	445.5%	15.9	15.9	0.0%	946,958,501.0	47%	
SAIFPOWER	12.02	20.95	11.69	-42.6%	2.7%	72.4	71.9	0.7%	91,571,140.2	19%	
BXPHARMA	10.97	13.43	10.18	-18.3%	7.7%	76.9	76.8	0.1%	386,244,234.6	50%	
SQURPHARMA	10.77	5.03	9.69	114.2%	11.2%	249.7	248.6	0.4%	623,586,546.0	9%	
TITASGAS	10.73	12.21	13.71	-12.1%	-21.7%	53.3	54.6	-2.4%	989,221,831.0	25%	
FARCHEM	10.09	7.96	4.32	26.8%	133.4%	31.9	33	-3.3%	136,547,347.5	12%	
AFCAGRO	9.93	5.69	3.33	74.4%	197.9%	68.6	67.7	1.3%	63,250,000.0	57%	
QSMDRYCELL	8.45	8.03	7.55	5.2%	12.0%	103.4	103.8	-0.4%	36,799,488.0	54%	

TT= Today's Turnover in crore, YT= Yesterday's Turnover in Crore, AT= Average of Last 20 day's Turnover, CP= Current Price, YP= Yesterday's Price, % Δ P= percentage change in price

Top Ten Gainer						Top Ten Loser					
Stock	CP	YP	AP	% Δ P	% Δ in P from AP	Stock	CP	YP	AP	% Δ P	% Δ in P from AP
1STPRIMFMF	11	10	9.815	10.0%	12.1%	NLTUBES	92.30	111.20	100.59	-17.0%	-8.2%
MICEMENT	73	66.4	68.37	9.9%	6.8%	BDAUTOCA	32.70	36.00	32.81	-9.2%	-0.3%
MODERNDYE	112.4	103.9	120.495	8.2%	-6.7%	GEMINISEA	332.80	359.40	421.90	-7.4%	-21.1%
PHOENIXFIN	21.7	20.3	17.41	6.9%	24.6%	BANGAS	268.80	289.80	304.22	-7.2%	-11.6%
KDSALTD	81.9	76.7	71.425	6.8%	14.7%	EXIMISTMF	5.60	6.00	5.67	-6.7%	-1.1%
GSPFINANCE	14.9	14	13.375	6.4%	11.4%	ICBIBANK	4.30	4.60	4.32	-6.5%	-0.3%
GHAIL	24	22.7	22.41	5.7%	7.1%	RAHIMAFOOI	41.10	43.80	41.82	-6.2%	-1.7%
UNIONCAP	15.3	14.5	13.705	5.5%	11.6%	MITHUNKNIT	68.10	71.70	76.82	-5.0%	-11.3%
OAL	34.3	32.7	32.41	4.9%	5.8%	SHYAMPSUG	6.20	6.50	6.50	-4.6%	-4.6%
RSRMSTEEL	49.6	47.3	51.925	4.9%	-4.5%	IBNSINA	136.10	142.20	157.72	-4.3%	-13.7%

AP= Average Price of last 20 day,% Δ in P from AP= percentage change in price from the 20-day average price

Industry /Sectors overview (Amounts in BDT. Crore)											
Sector	Trade Volume		MKT Turnover %		% Δ in Turnover	Market Capitalization		% of Total MC		% Δ in MC	
	Today	Yesterday	Today	Yesterday		Today	Yesterday	Today	Yesterday		
Bank	35.55	72.78	0.09	0.17	-51.2%	40796.01	40825.29	16.30%	16.29%	-0.1%	
Cement	13.79	11.04	0.04	0.03	24.9%	15551.69	15562.18	6.21%	6.21%	-0.1%	
Ceramics	2.62	4.58	0.01	0.01	-42.9%	2629.91	2658.58	1.05%	1.06%	-1.1%	
Engineering	74.83	65.71	0.20	0.15	13.9%	15246.64	15245.10	6.09%	6.08%	0.0%	
Food & Allied Product	17.90	21.58	0.05	0.05	-17.0%	23854.45	23865.18	9.53%	9.52%	0.0%	
Insurance	5.06	5.57	0.01	0.01	-9.2%	6778.31	6786.44	2.71%	2.71%	-0.1%	
IT	2.20	2.11	0.01	0.00	4.5%	497.52	498.72	0.20%	0.20%	-0.2%	
Jute	0.80	0.55	0.00	0.00	46.4%	83.84	86.28	0.03%	0.03%	-2.8%	
Miscellaneous	15.17	20.43	0.04	0.05	-25.8%	8024.45	8087.13	3.21%	3.23%	-0.8%	
Mutual Fund	4.79	2.65	0.01	0.01	81.1%	3495.29	3475.50	1.40%	1.39%	0.6%	
NBFI	38.48	26.89	0.10	0.06	43.1%	8616.39	8472.48	3.44%	3.38%	1.7%	
Paper & Printing	1.13	1.08	0.00	0.00	4.8%	172.28	176.53	0.07%	0.07%	-2.4%	
Pharmaceuticals & Chemicals	59.34	47.33	0.16	0.11	25.4%	40181.51	40122.91	16.05%	16.01%	0.1%	
Power & Energy	46.35	75.41	0.12	0.18	-38.5%	34273.30	34720.94	13.69%	13.85%	-1.3%	
Service & Real Estate	14.45	24.13	0.04	0.06	-40.1%	2008.06	2018.11	0.80%	0.81%	-0.5%	
Tannery	1.49	2.00	0.00	0.00	-25.6%	2413.85	2416.38	0.96%	0.96%	-0.1%	
Telecommunication	3.88	4.48	0.01	0.01	-13.5%	35882.87	35823.29	14.33%	14.29%	0.2%	
Textile	33.16	30.57	0.09	0.07	8.5%	7722.53	7718.70	3.08%	3.08%	0.0%	
Travel & Leisure	5.02	7.98	0.01	0.02	-37.1%	2116.65	2102.29	0.85%	0.84%	0.7%	

MC= Market Capitalization, % Δ in Turnover= change in turnover from last day, % Δ in MC= change in Market cap from last day

Index Movers	Index Shakers	Sector wise P/E (Fd.)			
MICEMENT	TITASGAS	Bank	9.52	NBFI	40.18
GP	LAFSURCEML	Cement	34.78	Paper & Printing	61.95
SQURPHARMA	UPGDCL	Ceramics	44.17	Pharmaceuticals & Chemicals	27.64
BATBC	OLYMPIC	Engineering	29.01	Power & Energy	15.68
IFADAUTOS	MJLBD	Food & Allied Product	30.61	Service & Real Estate	39.75
IDLC	NLTUBES	Insurance	14.58	Tannery	51.62
GLAXOSMITH	SUMITPOWER	IT	16.15	Telecommunication	26.37
PREMIERCEM	BEXIMCO	Jute	58.62	Textile	21.11
SOUTHEASTB	POWERGRID	Miscellaneous	35.36	Travel & Leisure	18.54
KDSALTD	ISLAMIBANK				

Important News

Company News:

MITHUNKNIT: Dividend Declaration: The Board of Directors has recommended 17% stock dividend for the year ended on June 30, 2015. Date of AGM: 30.12.2015, Time: 12:00 noon, Venue: Factory Premises of Bangas Limited at Doulatdiar, Chuadanga. Record Date: 15.12.2015. The Company has also reported EPS of Tk. 1.94, NAV per share of Tk. 21.57 and NOCFPS of Tk. 0.15 for the year ended on June 30, 2015.

BANGAS: Dividend Declaration: The Board of Directors has recommended 15% stock dividend for the year ended on June 30, 2015. Date of AGM: 30.12.2015, Time: 11:00 AM, Venue: Factory Premises of the Company, Doulatdiar, Chuadanga. Record Date: 15.12.2015. The Company has also reported EPS of Tk. 3.55, NAV per share of Tk. 26.61 and NOCFPS of Tk. 1.29 for the year ended on June 30, 2015

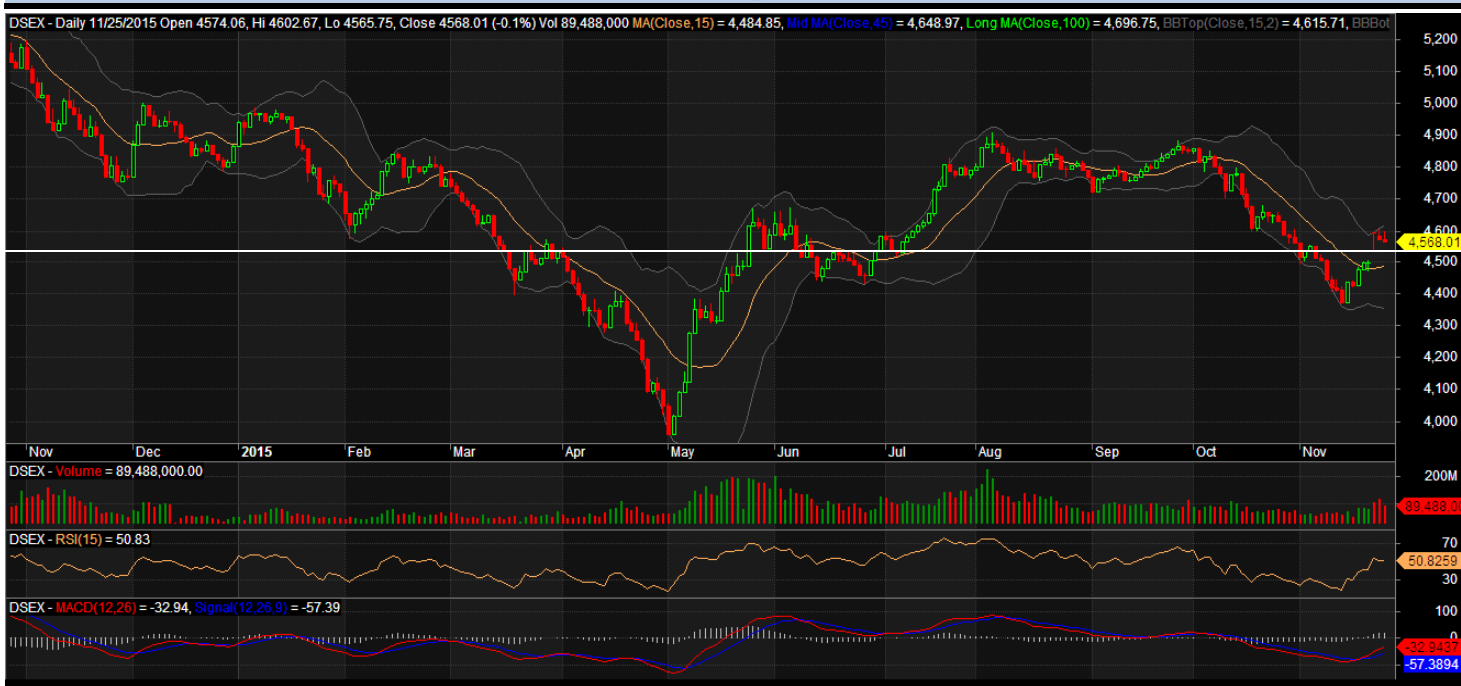
TALLUSPIN: Dividend Declaration: The Board of Directors has recommended 10% stock dividend for the year ended on June 30, 2015. Date of AGM: 30.12.2015, Time: 1:00 PM, Venue: Factory Premises of Bangas Limited at Doulatdiar, Chuadanga. Record Date: 15.12.2015. The Company has also reported EPS of Tk. 0.13, NAV per share of Tk. 16.32 and NOCFPS of Tk. 0.75 for the year ended on June 30, 2015.

Recent Dividend Declaration

Ticker	Dividend	Record Date
Shahjibazar Power Co. Ltd.	28% C & 3% B	07.12.15
Aftab Automobiles	C (for General Shareholders)	06.12.15
Knitting & Dyeing Industries I	5% C & 10% B	06.12.15
Meghna Petroleum Limited	105% C	22.12.15
Jamuna Oil Company Limited	100% C	28.12.15

Note: C= cash Dividend, B= Bonus Dividend, R=Right, N/A=NotApplicable

DSEX Technical Graph for last one year



MTB CAPITAL LIMITED

Corporate head office

Level: 3, MTB Tower, 111, Kazi Nazrul Islam Avenue, Dhaka

Phone: 8321714, Fax: 8321543

www.mtbcap.com

A mutual Trust Bank Company

you can invest with US

Disclaimer

This report has been prepared by the MTB Capital Limited (MTBCL) on the basis of available information in the market and it is provided for the purposes only. It is not to be used as an offer for buying or selling any instruments. If anyone takes any action relying on this information, shall be responsible solely by him/her self for any consequences. The best care has been taken to make the report informative. MTBCL doesn't give any warrant or guarantee that the report or such information is fully accurate. The information that are provided here is the exclusive property of MTBCL and can not be distributed without prior consent of MTBCL.