

Today's Market Overview

Monday, November 23, 2015

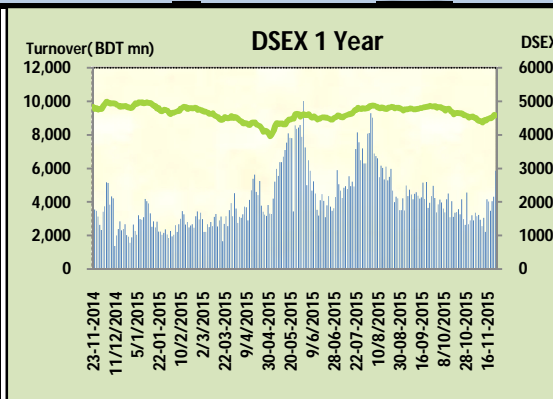


DSEX	4,585.11	-0.25%	Issues Traded	↑ Advanced 94	↓ Declined 185	↔ Unchanged 36
Turnover (BDT mn)	5,862.87	36.1%				

After three days of Bull Run market mow down the bearish rope and observed slight correction with a heavily improved turnover. It seemed side liner investors get in to the fence as some positive movement prevailed in market in last couple of days but it couldn't end in positive mark as active investors were busy in picking the quick gain. The premier bourse of the nation opened with very positive mood and enthusiasm got pace in the first hour after so many days. Market observed more than 2000 million turnover in the first hour and market gained almost 57 points and soon after the first hour market started getting sale pressure from the opportunity hunters but market recovered that sale pressure very quickly, again late hour vigorous sale pressure flooded away the buoyancy and ended with negative mood. Most of the major & prominent sectors failed to keep the momentum in last hour. Cement was the best gainer followed IT & insurance while Bank, Engineering, Ceramics, NBFI, Service & textile failed to prove them.

The general gauge DSEX ended at 4585.11 with a decline of -0.3% which cut 11.71 points from the broad DSEX. The Turnover advanced heavily by +36.1% which was 1556 Million BDT healthier than that of previous day and finally finished the mark at 5862.87 million BDT. A total of 94 issues advanced with 185 declined and 36 remained unchanged. Sectors that improved were: Cement (+1.0%) Food (+0.3%) Telecom (+0.2%) IT (+0.6%) & sectors that declined were: Bank (-0.3%) Ceramics (-1.8%) Engineering (-1.3%) NBFI (-0.7%) Service (-1.8%) Power (-0.1%) Textiles (-1.3%) Travel (-3.0%)

Debutant SIMTEX topped in the Volume chart with a turnover of 29.27 BDT crore. SAVAREFR ranked top gainer chart with a price hike of +8.7% and OLYMPIC topped in the loser chart with a decline of -17.4% from its prevailing price. LAFSURCEML led the way in the index mover chart while OLYMPIC played the shatter part.



Index Scenario				Market Highlights					
	INDEX	Change	% Changes	DSEX 52 week H/L	5334/3960	Market P/E (LTM)	14.84		
	DSEX	4585.11	(11.71)	-0.3%	DSEX Week H/L	4597/4496	M.Cap (mn)	3162352.2	
	DSES	1106.26	(0.98)	-0.1%	Group Performances				
	DS30	1743.52	(2.26)	-0.1%	Category	Mkt Cap (mn.)	Δ % M.Cap	Turnover BDT (mn)	Δ % Turnover
Turnover Scenario				Group A	2,448,200.22	-0.6%	4,928.61	31.0%	
Today's Turnover (mn.)	Change In BDT (mn.)	% Change		Group B	13,238.37	-2.3%	107.42	7.3%	
5862.87	1,556	36.1%		Group N	33,242.22	-1.7%	698.63	74.5%	
				Group Z	23,879.51	-0.9%	37.75	0.3%	

Top Ten Volume (in BDT. crore)										
Stock	TT	YT	AT	% Δ in Turnover	TT/AT	CP	YP	% Δ P	Number of shares	Public Holding
SIMTEX	29.27	NT	29.27	NM	0.0%	20	20	0.0%	58,750,000.0	61%
BXPHERMA	22.83	17.73	9.43	28.8%	142.0%	77.7	76.7	1.3%	386,244,234.6	50%
OLYMPIC	19.20	NT	5.57	NM	244.6%	258.7	313.1	-17.4%	190,417,988.2	27%
SAIFPOWER	19.18	23.67	10.32	-19.0%	85.9%	72.8	74.3	-2.0%	91,571,140.2	19%
IFADAUTOS	17.85	20.23	18.35	-11.8%	-2.8%	106.3	108.8	-2.3%	149,500,000.0	17%
FARCHEM	17.30	8.84	3.86	95.6%	348.1%	33.9	32.7	3.7%	136,547,347.5	12%
UPGDCL	16.89	8.05	6.54	110.0%	158.4%	143.3	141.1	1.6%	362,944,698.6	5%
LAFSURCEML	16.36	7.14	8.35	129.3%	95.9%	85.1	83.2	2.3%	1,161,373,500.0	30%
TITASGAS	13.34	7.38	12.75	80.7%	4.6%	53.4	54.8	-2.6%	989,221,831.0	25%
SQURPHARMA	13.10	8.36	9.50	56.6%	37.9%	248.6	247.7	0.4%	623,586,546.0	9%

TT= Today's Turnover in crore, YT= Yesterday's Turnover in Crore, AT= Average of Last 20 day's Turnover, CP= Current Price, YP= Yesterday's Price, % Δ P= percentage change in price

Top Ten Gainer						Top Ten Loser					
Stock	CP	YP	AP	% Δ P	% Δ in P from AP	Stock	CP	YP	AP	% Δ P	% Δ in P from AP
SAVAREFR	50	46	43.22	8.7%	15.7%	OLYMPIC	258.70	313.10	293.38	-17.4%	-11.8%
JANATAINS	12.6	11.6	11.525	8.6%	9.3%	HFL	20.20	22.50	22.01	-10.2%	-8.2%
ISNLTD	13	12	10.725	8.3%	21.2%	MODERNDYE	108.40	118.30	121.23	-8.4%	-10.6%
MJLBD	94.7	88.4	82.945	7.1%	14.2%	BDAUTOCA	36.50	39.60	32.91	-7.8%	10.9%
OAL	33.9	32.2	32.69	5.3%	3.7%	GEMINISEA	370.10	396.60	427.40	-6.7%	-13.4%
QSMDDRYCELL	100.2	95.2	83.24	5.3%	20.4%	GENNEXT	9.30	9.90	9.34	-6.1%	-0.4%
MEGCONMILK	7.3	7	7.12	4.3%	2.5%	KAY&QUE	17.20	18.20	17.81	-5.5%	-3.4%
ASIAPACINS	15	14.4	14.38	4.2%	4.3%	RELIANCINS	47.30	50.00	48.73	-5.4%	-2.9%
UTTARAFIN	58.7	56.4	55.145	4.1%	6.4%	APEXFOODS	107.00	113.00	106.66	-5.3%	0.3%
EASTERNINS	26	25	25.375	4.0%	2.5%	HAKKANIPUL	41.30	43.50	43.71	-5.1%	-5.5%

AP= Average Price of last 20 day,% Δ in P from AP= percentage change in price from the 20-day average price

Industry /Sectors overview (Amounts in BDT. Crore)											
Sector	Trade Volume		MKT Turnover %		% Δ in Turnover	Market Capitalization		% of Total MC		% Δ in MC	
	Today	Yesterday	Today	Yesterday		Today	Yesterday	Today	Yesterday		
Bank	39.19	29.45	0.07	0.07	33.1%	40294.05	40402.58	16.02%	15.96%	-0.3%	
Cement	21.58	9.98	0.04	0.02	116.3%	15728.43	15569.58	6.25%	6.15%	1.0%	
Ceramics	7.12	4.87	0.01	0.01	46.3%	2676.92	2727.01	1.06%	1.08%	-1.8%	
Engineering	93.49	89.97	0.16	0.21	3.9%	15367.63	15577.82	6.11%	6.15%	-1.3%	
Food & Allied Product	34.99	11.22	0.06	0.03	211.9%	24097.31	25283.08	9.58%	9.99%	-4.7%	
Insurance	11.38	11.21	0.02	0.03	1.6%	6900.95	6878.62	2.74%	2.72%	0.3%	
IT	4.25	2.96	0.01	0.01	43.4%	508.96	505.80	0.20%	0.20%	0.6%	
Jute	1.19	0.73	0.00	0.00	63.9%	88.03	89.46	0.04%	0.04%	-1.6%	
Miscellaneous	28.85	21.26	0.05	0.05	35.7%	8171.57	8198.42	3.25%	3.24%	-0.3%	
Mutual Fund	4.60	4.22	0.01	0.01	9.0%	3484.81	3484.97	1.39%	1.38%	0.0%	
NBFI	29.12	22.61	0.05	0.05	28.8%	8363.28	8424.83	3.33%	3.33%	-0.7%	
Paper & Printing	2.36	1.80	0.00	0.00	30.8%	178.53	182.71	0.07%	0.07%	-2.3%	
Pharmaceuticals & Chemicals	89.05	68.63	0.16	0.16	29.8%	40350.29	40342.00	16.04%	15.93%	0.0%	
Power & Energy	90.87	60.45	0.16	0.14	50.3%	34825.48	34858.76	13.85%	13.77%	-0.1%	
Service & Real Estate	24.00	29.24	0.04	0.07	-17.9%	2050.85	2088.87	0.82%	0.83%	-1.8%	
Tannery	3.07	3.09	0.01	0.01	-0.7%	2434.37	2457.39	0.97%	0.97%	-0.9%	
Telecommunication	6.53	6.92	0.01	0.02	-5.7%	36039.02	35972.54	14.33%	14.21%	0.2%	
Textile	68.69	33.83	0.12	0.08	103.0%	7826.42	7933.11	3.11%	3.13%	-1.3%	
Travel & Leisure	9.60	10.90	0.02	0.03	-11.9%	2130.74	2197.10	0.85%	0.87%	-3.0%	

MC= Market Capitalization, % Δ in Turnover= change in turnover from last day, % Δ in MC= change in Market cap from last day

Index Movers	Index Shakers	Sector wise P/E (Fd.)			
LAFSURCEML	OLYMPIC	Bank	9.43	NBFI	40.72
MJLBD	TITASGAS	Cement	35.52	Paper & Printing	62.43
GP	BATBC	Ceramics	44.84	Pharmaceuticals & Chemicals	27.78
UPGDCL	RENATA	Engineering	29.20	Power & Energy	16.09
SQURPHARMA	BSRMLTD	Food & Allied Product	30.84	Service & Real Estate	41.06
BXPBARMA	HEIDELBCEM	Insurance	14.92	Tannery	53.15
SUMITPOWER	UNIQUEHRL	IT	16.50	Telecommunication	26.77
BEXIMCO	BERGERPBL	Jute	61.82	Textile	18.87
UTTARAFIN	LINDEBD	Miscellaneous	35.84	Travel & Leisure	18.82
ALARABANK	RAKCERAMIC				

Important News

Company News:

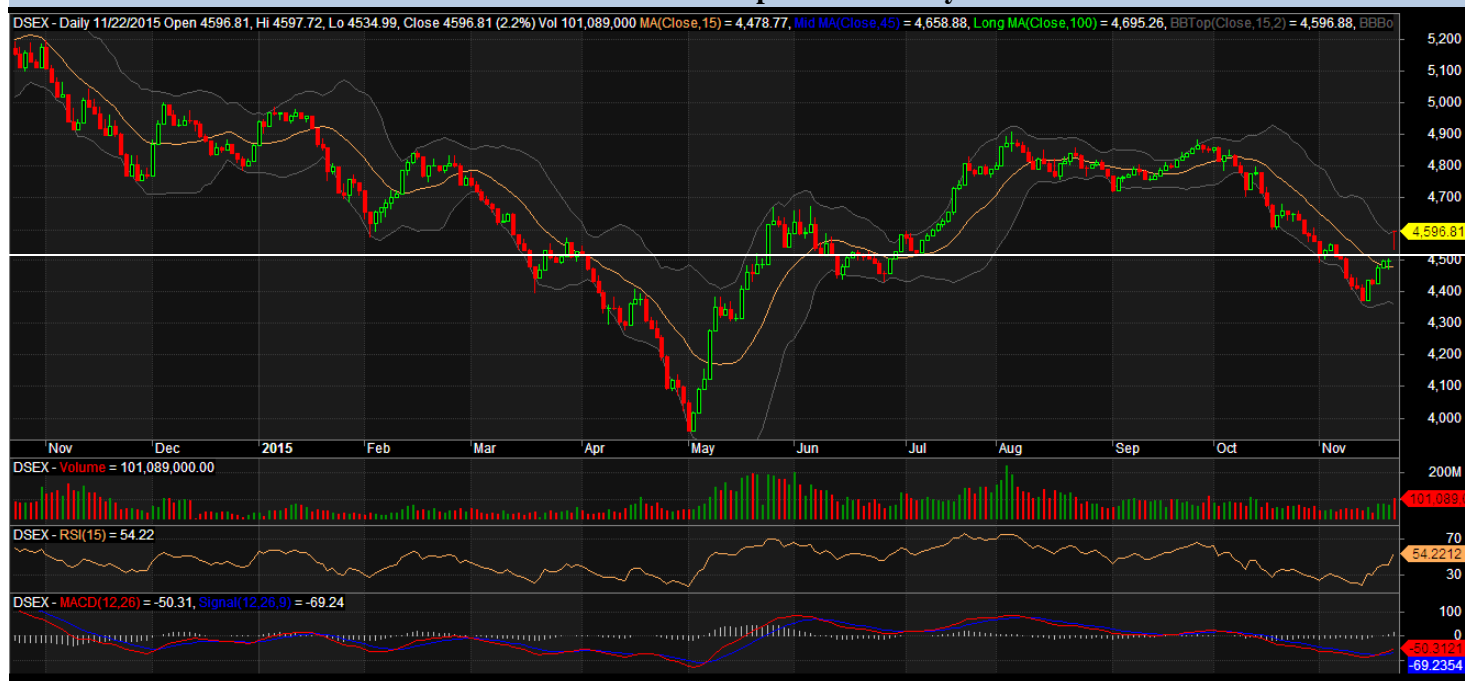
SIMTEX: Q1 Financials: The Company has reported its profit after tax Tk. 22.23 million and basic EPS Tk. 0.77 for the 3 (three) months ended on 30 September 2015 (July 2015 to September 2015) as against profit after tax of Tk. 36.32 million and basic EPS of Tk. 1.26 for the same period of the previous year. It is to be noted that basic EPS has been calculated based on weighted average Pre - IPO paid - up number of shares i.e. 28,750,000 shares for both the periods. However, considering Post IPO 58,750,000 number of shares, Company's basic EPS would be Tk. 0.38 for 3 (three) months ended on 30 September 2015 (July 2015 to September 2015) and NAV per share would be Tk. 21.60 as on 30 September 2015.

Recent Dividend Declaration

Ticker	Dividend	Record Date
Shahjibazar Power Co. Ltd.	28% C & 3% B	07.12.15
Aftab Automobiles	C (for General Shareholders)	06.12.15
Knitting & Dyeing Industries I	5% C & 10% B	06.12.15
Meghna Petroleum Limited	105% C	22.12.15
Jamuna Oil Company Limited	100% C	28.12.15

Note: C= cash Dividend, B= Bonus Dividend, R=Right, N/A=NotApplicable

DSEX Technical Graph for last one year



MTB CAPITAL LIMITED

Corporate head office

Level: 3, MTB Tower, 111, Kazi Nazrul Islam Avenue, Dhaka

Phone: 8321714, Fax: 8321543

www.mtbcap.com

A mutual Trust Bank Company

you can invest with US

Disclaimer

This report has been prepared by the MTB Capital Limited (MTBCL) on the basis of available information in the market and it is provided for the purposes only. It is not to be used as an offer for buying or selling any instruments. If anyone takes any action relying on this information, shall be responsible solely by him/her self for any consequences. The best care has been taken to make the report informative. MTBCL doesn't give any warrant or guarantee that the report or such information is fully accurate. The information that are provided here is the exclusive property of MTBCL and can not be distributed without prior consent of MTBCL.