

Today's Market Overview



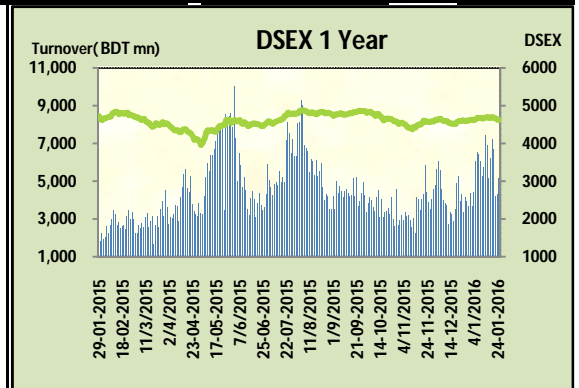
Monday, January 25, 2016

DSEX	4,626.14	0.00%	Issues Traded	Advanced	Declined	Unchanged
Turnover (BDT mn)	4,277.70	2.2%		138	146	42

Market continued the losing streak for the consecutive four trading days with an improved turnover. The premier bourse of the nation opened with a positive mood but after the first hour sellers intensified their selling binge, mostly investors from the small cap stocks were busy in picking profit after seeing some positive movement in some big cap stocks like Power & NBFI but sellers dominated the market throughout the session. Overall market put mixed performances as some of the big cap stocks started with positive tone but failed to keep the momentum. Somehow market got improved participation as turnover broke the 5 billion mark after two trading days. Most of the concentration occurred in NBFI, Power & Service. Among the other two indices DSES the shariah based index performed positively while DS30 failed to perform. Ceramics was the best gainer followed by Travel & NBFI. It was the worst loser followed by Textiles, Paper & Bank.

The general gauge DSEX ended at 4620.32 with a decline of -0.1% which cut 5.81 points from the broad DSEX. The Turnover advanced heavily by +20.4% which was only 875 Million BDT healthier than that of previous day and finally finished the mark at 5152.28 million BDT. A total of 138 issues advanced with 146 declined and 42 remained unchanged. Sectors that improved were: Ceramics (+3.8%) Food (+0.2%) Insurance (+0.4%) NBFI (+1.4%) Power (+0.3%) Travel (+3.5%) & Sectors that declined were: Bano (-0.8%) Cement (-0.1%) IT (-2.8%) Service (-0.8%) Textiles (-1.3%) Miscellaneous (-0.2%)

SAIFPOWER topped in the Volume chart with a turnover of 23.68 BDT crore. INTECH ranked top gainer chart with a price hike of +9.7% and UNITEDINS topped in the loser chart with a decline of -6.9% from its prevailing price. POWERGRID led the way in the index mover chart while LAFSURCEML played the shatter part.



Index Scenario				Market Highlights				
	INDEX	Change	% Changes	DSEX 52 week H/L	4992/3960	Market P/E (LTM)	15.02	
	DSEX	4620.32	(5.81)	DSEX Week H/L	4698/4620	M.Cap (mn)	3196340.5	
	DSES	1117.72	1.90	Group Performances				
	DS30	1750.07	(0.36)	Category	Mkt Cap (mn.)	Δ % M.Cap	Turnover BDT (mn)	Δ % Turnover
	Turnover Scenario			Group A	2,476,816.80	0.0%	4,150.05	16.0%
	Today's Turnover (mn.)	Change In BDT (mn.)	% Change	Group B	15,162.23	-1.2%	214.56	-16.6%
	5152.28	875	20.4%	Group N	37,048.01	0.2%	512.35	38.2%
				Group Z	29,337.69	0.1%	60.17	-2.4%

Top Ten Volume (in BDT. crore)										
Stock	TT	YT	AT	% Δ in Turnover	TT/AT	CP	YP	% Δ P	Number of shares	Public Holding
SAIFPOWER	23.68	7.53	7.35	214.3%	222.2%	71	69.6	2.0%	91,571,140.2	19%
ALLTEX	17.32	15.82	7.72	9.5%	124.4%	29.7	31.1	-4.5%	55,968,000.0	51%
IFADAUTOS	16.76	9.03	8.80	85.5%	90.5%	96.7	93.1	3.9%	149,500,000.0	17%
ITC	14.91	9.61	14.40	55.1%	3.6%	71.2	75.2	-5.3%	87,000,000.0	12%
RAKCERAMIC	13.22	3.62	4.93	265.0%	168.2%	74.1	71	4.4%	336,850,610.0	12%
GHAIL	11.80	5.35	4.50	120.8%	162.1%	29.8	29.1	2.4%	90,090,000.0	45%
UPGDCL	11.23	16.59	20.59	-32.3%	-45.5%	157.6	158.3	-0.4%	362,944,698.6	5%
EMERALDOIL	11.22	25.86	17.39	-56.6%	-35.5%	62	64.5	-3.9%	54,285,000.0	38%
CVOPRL	10.61	4.19	3.92	153.1%	170.8%	320.3	306.4	4.5%	24,750,000.0	34%
QSMRDYCELL	8.62	3.01	8.15	186.3%	5.8%	121.5	113.7	6.9%	40,479,436.8	54%

TT= Today's Turnover in crore, YT= Yesterday's Turnover in Crore, AT= Average of Last 20 day's Turnover, CP= Current Price, YP= Yesterday's Price, % Δ P= percentage change in price

Top Ten Gainer						Top Ten Loser					
Stock	CP	YP	AP	% Δ P	% Δ in P from AP	Stock	CP	YP	AP	% Δ P	% Δ in P from AP
INTECH	14.7	13.4	12.97	9.7%	13.3%	UNITEDINS	29.60	31.80	27.49	-6.9%	7.7%
EASTRN LUB	542	504.2	348.76	7.5%	55.4%	DELTASPINN	10.80	11.50	9.77	-6.1%	10.5%
QSM DRYCELL	121.5	113.7	120.755	6.9%	0.6%	SAIHAMCOT	15.60	16.60	14.28	-6.0%	9.3%
SAVAREFR	48	45.4	45.995	5.7%	4.4%	ITC	71.20	75.20	62.22	-5.3%	14.4%
DBH	133.1	125.9	119.995	5.7%	10.9%	DACCADYE	18.50	19.50	14.30	-5.1%	29.4%
LIBRAINFU	318.9	301.9	294.645	5.6%	8.2%	REGENTTEX	22.70	23.90	20.94	-5.0%	8.4%
POWERGRID	53.2	50.4	50.235	5.6%	5.9%	LEGACYFOO1	30.00	31.50	32.45	-4.8%	-7.6%
MIDASFIN	17.8	16.9	16.38	5.3%	8.7%	ALLTEX	29.70	31.10	22.68	-4.5%	31.0%
BIFC	10.5	10	9.68	5.0%	8.5%	ICBIBANK	4.30	4.50	4.32	-4.4%	-0.5%
RDFOOD	17.3	16.5	14.965	4.8%	15.6%	SINOBANGLA	30.50	31.90	30.13	-4.4%	1.2%

AP= Average Price of last 20 day,% Δ in P from AP= percentage change in price from the 20-day average price

Industry /Sectors overview (Amounts in BDT. Crore)											
Sector	Trade Volume		MKT Turnover %		% Δ in Turnover	Market Capitalization		% of Total MC		% Δ in MC	
	Today	Yesterday	Today	Yesterday		Today	Yesterday	Today	Yesterday		
Bank	24.60	19.39	0.05	0.05	26.9%	40278.55	40613.97	15.76%	15.89%	-0.8%	
Cement	7.57	7.82	0.02	0.02	-3.3%	14401.76	14413.07	5.64%	5.64%	-0.1%	
Ceramics	15.16	5.25	0.03	0.01	188.5%	2923.84	2817.73	1.14%	1.10%	3.8%	
Engineering	75.59	66.65	0.15	0.16	13.4%	15743.73	15759.94	6.16%	6.17%	-0.1%	
Food & Allied Product	35.57	40.12	0.07	0.10	-11.3%	23764.34	23708.31	9.30%	9.28%	0.2%	
Insurance	17.71	14.89	0.04	0.04	19.0%	7596.38	7567.89	2.97%	2.96%	0.4%	
IT	29.46	21.15	0.06	0.05	39.3%	1217.18	1252.51	0.48%	0.49%	-2.8%	
Jute	2.20	1.51	0.00	0.00	46.3%	89.60	89.50	0.04%	0.04%	0.1%	
Miscellaneous	19.80	17.57	0.04	0.04	12.7%	8360.52	8374.92	3.27%	3.28%	-0.2%	
Mutual Fund	3.56	3.36	0.01	0.01	6.1%	3721.50	3711.90	1.46%	1.45%	0.3%	
NBFI	20.93	15.12	0.04	0.04	38.4%	9092.66	8970.50	3.56%	3.51%	1.4%	
Paper & Printing	1.72	1.57	0.00	0.00	9.6%	210.72	213.19	0.08%	0.08%	-1.2%	
Pharmaceuticals & Chemicals	33.61	33.12	0.07	0.08	1.5%	41029.58	41030.65	16.06%	16.05%	0.0%	
Power & Energy	57.80	43.07	0.12	0.10	34.2%	33910.04	33805.54	13.27%	13.23%	0.3%	
Service & Real Estate	29.94	15.40	0.06	0.04	94.4%	1976.58	1993.32	0.77%	0.78%	-0.8%	
Tannery	2.00	1.67	0.00	0.00	20.0%	2388.49	2400.62	0.93%	0.94%	-0.5%	
Telecommunication	7.48	4.31	0.02	0.01	73.5%	37893.88	37902.13	14.83%	14.83%	0.0%	
Textile	90.89	100.96	0.19	0.24	-10.0%	8628.51	8743.84	3.38%	3.42%	-1.3%	
Travel & Leisure	13.20	9.09	0.03	0.02	45.3%	2281.34	2204.95	0.89%	0.86%	3.5%	

MC= Market Capitalization, % Δ in Turnover= change in turnover from last day, % Δ in MC= change in Market cap from last day

Index Movers	Index Shakers	Sector wise P/E (Fd.)			
POWERGRID	LAFSURCEML	Bank	9.29	NBFI	44.61
OLYMPIC	ISLAMIBANK	Cement	31.29	Paper & Printing	91.30
RAK CERAMIC	BATBC	Ceramics	47.22	Pharmaceuticals & Chemicals	27.96
HEIDELBCEM	BSRMLTD	Engineering	64.65	Power & Energy	15.91
DBH	PRIMEBANK	Food & Allied Product	30.41	Service & Real Estate	37.40
UNIQUEHRL	SQURPHARMA	Insurance	16.19	Tannery	52.68
IFADAUTOS	ITC	IT	24.78	Telecommunication	27.45
CVOPRL	BANKASIA	Jute	63.98	Textile	20.30
QSM DRYCELL	EBL	Miscellaneous	36.47	Travel & Leisure	35.47
RENATA	SAPORTL				

Important News

Company News:

DESCO: Q2 Financials: (Q2 Un-audited): EPS was Tk. 0.68 for October-December, 2015 as against Tk. 1.19 for October-December, 2014; EPS was Tk. 1.36 for July-December, 2015 as against Tk. 2.13 for July-December, 2014. NOCFPS was Tk. 2.17 for July-December, 2015 as against Tk. 1.79 for July-December, 2014. NAV per share was Tk. 36.76 as of December 31, 2015 and Tk. 34.15 as of June 30, 2015.

MIDASFIN: Q2 Financials: (Q2 Un-audited): Consolidated EPS was Tk. 0.23 for Oct.-December, 2015 as against Tk. (0.20) for Oct.-December, 2014; Consolidated EPS was Tk. 0.36 for July-December, 2015 as against Tk. (1.22) for July-December, 2014. Consolidated NOCFPS was Tk. (2.06) for July-December, 2015 as against Tk. 0.65 for July-December, 2014. Consolidated NAV per share was Tk. 7.73 as of Dec. 31, 2015 and Tk. 5.80 as of Dec. 31, 2014. Consolidated accumulated profit/(loss) of the Company was Tk. (397.75) million as on 31.12.15.

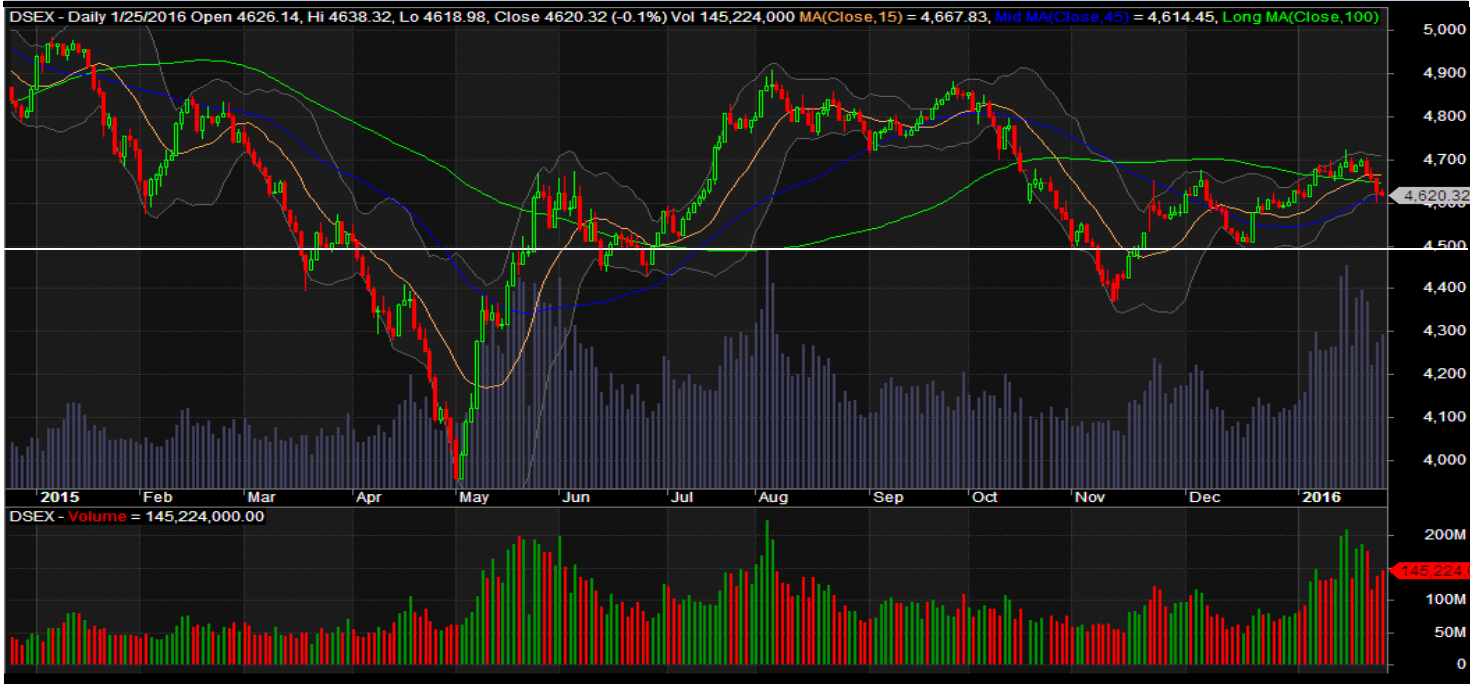
USMANIAGL: Q2 Financials:(Q2 Un-audited): EPS was Tk. (1.28) for October-December, 2015 as against Tk. (0.57) for October-December, 2014; EPS was Tk. (2.69) for July-December, 2015 as against Tk. (0.40) for July-December, 2014. NOCFPS was Tk. (3.81) for July-December, 2015 as against Tk. (2.18) for July-December, 2014. NAV per share was Tk. 20.33 as of December 31, 2015 and Tk. 26.31 as of December 31, 2014. Accumulated profit/(loss) of the Company was Tk. (82.71) million as on 31.12.2015.

Recent Dividend Declaration

Ticker	Dividend	Record Date
S. Alam Cold Rolled Steels Ltd.	15% C	28.01.16
HRTEX	10% C	10.02.2016

Note: C= cash Dividend, B= Bonus Dividend, R=Right, N/A=NotApplicable

DSEX Technical Graph for last year



MTB CAPITAL LIMITED

Corporate head office

Level: 3, MTB Tower, 111, Kazi Nazrul Islam Avenue, Dhaka

Phone: 8321714, Fax: 8321543

www.mtbcap.com

A Mutual Trust Bank Company

you can invest with us

Disclaimer

This report has been prepared by the MTB Capital Limited (MTBCL) on the basis of available information in the market and it is provided for the purposes only. It is not to be used as an offer for buying or selling any instruments. If anyone takes any action relying on this information, shall be responsible solely by him/her self for any consequences. The best care has been taken to make the report informative. MTBCL doesn't give any warrant or guarantee that the report or such information is fully accurate. The information that are provided here is the exclusive property of MTBCL and can not be distributed without prior consent of MTBCL.