

# Today's Market Overview

Monday, October 26, 2015

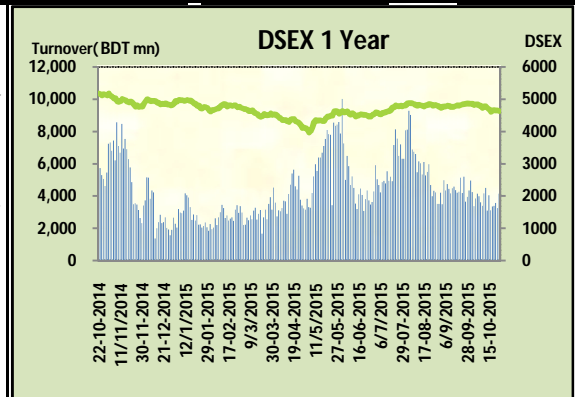


<b>DSEX</b>	4,630.58	-0.40%	<b>Issues Traded</b>	↑ <b>Advanced</b> 117	↓ <b>Declined</b> 165	↔ <b>Unchanged</b> 38
<b>Turnover (BDT mn)</b>	4,154.63	27.6%				

Initial buoyancy faded away as strong sale pressure snatched the momentum in late hour. Market ended in negative zone with a very improved turnover. Turnover crossed the 4 Billion Mark after five consecutive working days. Market started with huge buy pressure as some good corporate declaration vibrated the market with strong hope but indolence in some big cap stocks specially Telecom, Cement & Bank didn't allow the market to remain in green zone. Most of the major sectors were in mime mood but Power & Textiles got some concentration from the investors. Other two indices DS30 & DSES the shariah based index both Performed very poor. Telecom was the worst loser followed by Cement & Bank.

The general gauge DSEX ended at 4630.58 with a decline of -0.04% which cut 18.71 points from the broad DSEX. The Turnover advanced heavily by 27.6% which was 898 Million BDT healthier than that of previous day and finally finished the mark at 4154.63 million BDT. A total of 117 issues advanced with 165 declined and 38 remained unchanged. Sectors that improved were: Ceramics (+0.6%) Mutual Fund (+0.7%) Textile (+0.3%) Power (+1.1%) Paper (+3.3%) & sectors that declined were: Bank (-0.7%) Cement (-1.8%) Engineering (-0.6%) NBFI (-0.4%) Pharmaceuticals (-0.5%) Telecom (-2.1%) Service (-0.6%) Travel (-0.8%)

CVOPRL topped in the Volume chart with a turnover of 15.71 BDT crore. PTL ranked top gainer chart with a price hike of +11.3% and JUTESPINN topped in the loser chart with a decline of -16.1% from its prevailing price. SPCL led the way in the index mover chart while GP played the shatter part.



Index Scenario				Market Highlights					
	<b>INDEX</b>	<b>Change</b>	<b>% Changes</b>	<b>DSEX 52 week H/L</b>	5334/3960	<b>Market P/E (LTM)</b>	14.84		
	<b>DSEX</b>	4630.58	(18.71)	-0.4%	<b>DSEX Week H/L</b>	4658/4630	<b>M.Cap (mn)</b>	3200441.2	
	<b>DSES</b>	1109.90	(6.58)	-0.6%	<b>Group Performances</b>				
	<b>DS30</b>	1751.21	(11.00)	-0.6%	<b>Category</b>	<b>Mkt Cap (mn.)</b>	<b>Δ % M.Cap</b>	<b>Turnover BDT (mn)</b>	<b>Δ % Turnover</b>
<b>Turnover Scenario</b>				<b>Group A</b>	2,473,205.84	-0.5%	3,094.48	22.1%	
<b>Today's Turnover (mn.)</b>	<b>Change In BDT (mn.)</b>	<b>% Change</b>		<b>Group B</b>	14,217.68	-0.2%	137.55	-30.5%	
4154.63	898	27.6%		<b>Group N</b>	31,944.90	-1.3%	357.58	-13.3%	
				<b>Group Z</b>	24,758.66	0.2%	32.16	-14.7%	

Top Ten Volume (in BDT. crore)										
Stock	TT	YT	AT	% Δ in Turnover	TT/AT	CP	YP	% Δ P	Number of shares	Public Holding
CVOPRL	15.71	13.88	5.62	13.2%	179.6%	449.3	460.3	-2.4%	19,800,000.0	34%
LAFSURCEML	14.54	5.29	16.85	175.0%	-13.7%	85.4	88.2	-3.2%	1,161,373,500.0	30%
IFADAUTOS	13.43	7.38	5.29	81.9%	153.8%	108.8	109.1	-0.3%	115,000,000.0	17%
SPCL	11.47	7.53	5.22	52.3%	119.6%	173.7	165.5	5.0%	133,137,900.0	19%
KDSALTD	9.54	13.46	16.61	-29.1%	-42.5%	68.6	72.4	-5.2%	52,000,000.0	21%
CNATEX	8.76	9.46	3.51	-7.4%	149.3%	15	15.1	-0.7%	194,250,000.0	23%
GP	7.83	3.00	9.82	160.7%	-20.3%	247.6	253	-2.1%	1,350,300,022.0	4%
KPCL	7.77	1.53	4.07	406.2%	91.0%	72.9	71	2.7%	361,284,710.0	13%
AMANFEED	7.65	15.11	7.06	-49.4%	8.3%	60.5	62.3	-2.9%	80,000,000.0	23%
EMERALDOIL	7.09	6.47	5.30	9.6%	33.6%	53.5	56.6	-5.5%	49,350,000.0	38%

TT= Today's Turnover in crore, YT= Yesterday's Turnover in Crore, AT= Average of Last 20 day's Turnover, CP= Current Price, YP= Yesterday's Price, % Δ P= percentage change in price

Top Ten Gainer						Top Ten Loser					
Stock	CP	YP	AP	% Δ P	% Δ in P from AP	Stock	CP	YP	AP	% Δ P	% Δ in P from AP
PTL	18.7	16.8	17.405	11.3%	7.4%	JUTESPINN	48.60	57.90	57.86	-16.1%	-16.0%
SHYAMPSUG	7.7	7	6.82	10.0%	12.9%	PADMALIFE	35.10	38.30	30.85	-8.4%	13.8%
KAY&QUE	20.2	18.5	15.91	9.2%	27.0%	NORTHERN	283.00	305.20	307.79	-7.3%	-8.1%
3RDICB	240.3	221	265.02	8.7%	-9.3%	IMAMBUTTOI	11.30	12.10	13.01	-6.6%	-13.1%
BDWELDING	20.5	18.9	21.245	8.5%	-3.5%	QSMDRYCELI	70.90	75.30	75.36	-5.8%	-5.9%
DSHGARME	107.4	99.3	90.63	8.2%	18.5%	SAVAREFR	50.00	53.00	51.27	-5.7%	-2.5%
LRGLOBMF1	6.2	5.8	5.85	6.9%	6.0%	EMERALDOIL	53.50	56.60	52.06	-5.5%	2.8%
DAFODILCOM	19.5	18.3	17.59	6.6%	10.9%	BENGALWTL	71.00	75.00	69.26	-5.3%	2.5%
GREENDELMF	4.9	4.6	4.985	6.5%	-1.7%	AAMRATECH	29.10	30.70	30.63	-5.2%	-5.0%
SONARGAON	9.1	8.6	9.32	5.8%	-2.4%	GLAXOSMITH	1,949.90	2,052.10	2,075.06	-5.0%	-6.0%

AP= Average Price of last 20 day,% Δ in P from AP= percentage change in price from the 20-day average price

Industry /Sectors overview (Amounts in BDT. Crore)											
Sector	Trade Volume		MKT Turnover %		% Δ in Turnover	Market Capitalization		% of Total MC		% Δ in MC	
	Today	Yesterday	Today	Yesterday		Today	Yesterday	Today	Yesterday		
Bank	27.74	21.27	0.08	0.07	30.4%	40336.88	40611.65	15.88%	15.91%	-0.7%	
Cement	19.06	9.03	0.05	0.03	111.2%	16239.14	16536.45	6.39%	6.48%	-1.8%	
Ceramics	5.51	6.01	0.02	0.02	-8.3%	2733.89	2717.06	1.08%	1.06%	0.6%	
Engineering	63.63	56.02	0.18	0.18	13.6%	14766.05	14855.61	5.81%	5.82%	-0.6%	
Food & Allied Product	17.24	14.97	0.05	0.05	15.2%	24255.99	24197.56	9.55%	9.48%	0.2%	
Insurance	4.59	4.82	0.01	0.02	-4.8%	7035.20	7050.38	2.77%	2.76%	-0.2%	
IT	3.71	2.30	0.01	0.01	61.2%	527.38	535.92	0.21%	0.21%	-1.6%	
Jute	1.92	0.90	0.01	0.00	114.0%	95.63	100.23	0.04%	0.04%	-4.6%	
Miscellaneous	21.38	34.82	0.06	0.11	-38.6%	8370.09	8477.40	3.29%	3.32%	-1.3%	
Mutual Fund	3.67	3.78	0.01	0.01	-2.7%	3495.66	3471.62	1.38%	1.36%	0.7%	
NBFI	11.59	12.47	0.03	0.04	-7.0%	8025.66	8059.46	3.16%	3.16%	-0.4%	
Paper & Printing	2.42	1.20	0.01	0.00	102.0%	220.00	212.90	0.09%	0.08%	3.3%	
Pharmaceuticals & Chemicals	39.91	38.98	0.11	0.12	2.4%	40428.06	40619.24	15.91%	15.91%	-0.5%	
Power & Energy	63.63	44.34	0.18	0.14	43.5%	37673.80	37268.39	14.83%	14.60%	1.1%	
Service & Real Estate	8.31	7.33	0.02	0.02	13.4%	1839.22	1850.79	0.72%	0.72%	-0.6%	
Tannery	5.37	4.05	0.01	0.01	32.5%	2507.38	2518.97	0.99%	0.99%	-0.5%	
Telecommunication	9.65	5.69	0.03	0.02	69.7%	35062.99	35822.14	13.80%	14.03%	-2.1%	
Textile	43.92	35.28	0.12	0.11	24.5%	8198.01	8170.07	3.23%	3.20%	0.3%	
Travel & Leisure	7.34	11.98	0.02	0.04	-38.7%	2217.69	2235.04	0.87%	0.88%	-0.8%	

MC= Market Capitalization, % Δ in Turnover= change in turnover from last day, % Δ in MC= change in Market cap from last day

Index Movers	Index Shakers	Sector wise P/E			
SPCL	GP	Bank	9.50	NBFI	30.51
BATBC	LAFSURCEML	Cement	35.02	Paper & Printing	76.82
MPETROLEUM	GLAXOSMITH	Ceramics	37.80	Pharmaceuticals & Chemicals	27.37
KPCL	BRACBANK	Engineering	32.71	Power & Energy	15.37
UPGDCL	BERGERPBL	Food & Allied Product	33.79	Service & Real Estate	41.55
PADMAOIL	RUPALIBANK	Insurance	14.47	Tannery	34.00
JAMUNAOIL	PUBALIBANK	IT	18.41	Telecommunication	24.19
SQURPHARMA	OLYMPIC	Jute	119.08	Textile	17.15
POWERGRID	BSRMLTD	Miscellaneous	33.52	Travel & Leisure	14.44
LINDEBD	BXPBARMA				

## Important News

### Company News:

**ONEBANKLTD: Q3 Financials: (Q3 Un-audited):** Consolidated EPS was Tk. 1.05 for July-September, 2015 as against Tk. 0.50 for July-September, 2014; Consolidated EPS was Tk. 1.94 for January-September, 2015 as against Tk. 1.24 for January-September, 2014. Consolidated NOCFPS was Tk. 11.94 for January-September, 2015 as against Tk. 6.32 for January-September, 2014. Consolidated NAV per share was Tk. 17.00 as of September 30, 2015 and Tk. 18.28 as of December 31, 2014.

**DHAKABANK: Q3 Financials: (Q3 Un-audited):** Consolidated EPS was Tk. 0.57 for July-September, 2015 as against Tk. 0.13 for July-September, 2014; Consolidated EPS was Tk. 2.14 for January-September, 2015 as against Tk. 0.93 for January-September, 2014. Consolidated NOCFPS was Tk. (0.57) for January-September, 2015 as against Tk. (0.83) for January-September, 2014. Consolidated NAV per share was Tk. 21.97 as of September 30, 2015 and Tk. 20.28 as of September 30, 2014.

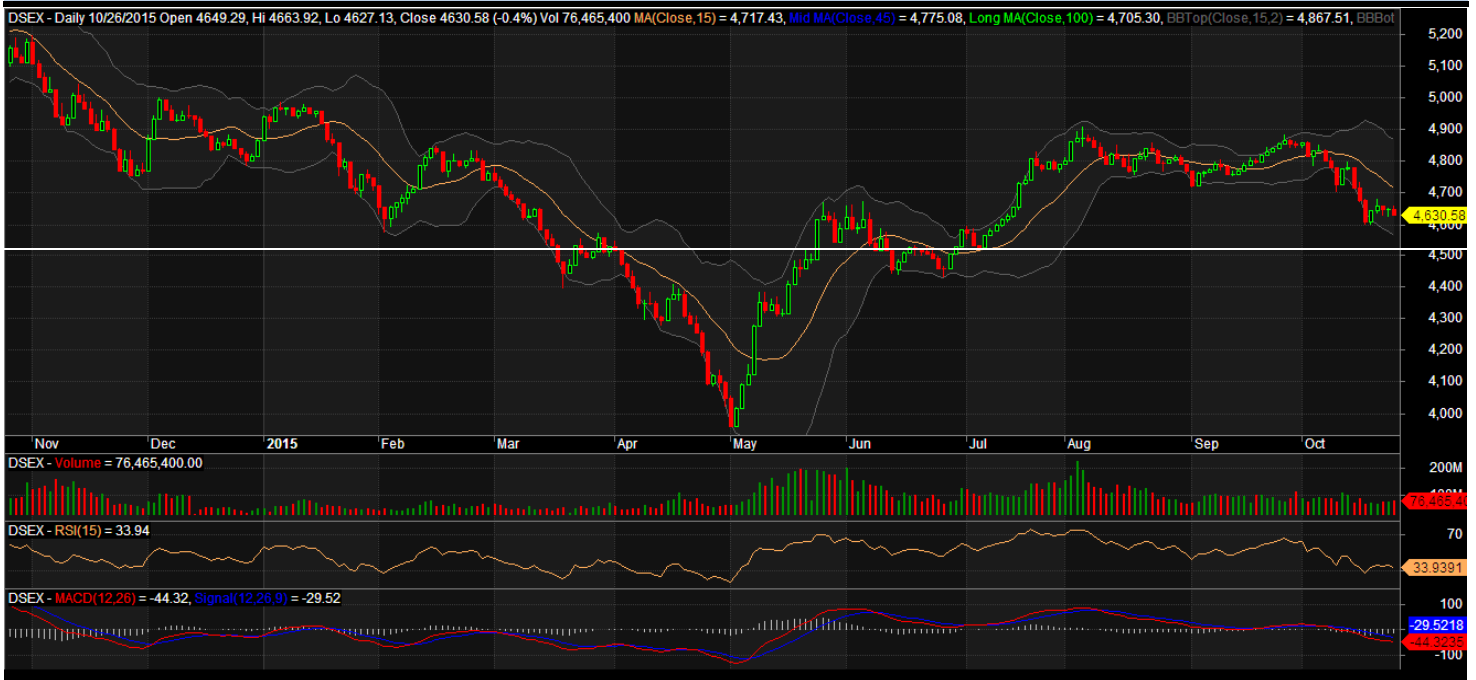
**CVOPRL: Dividend Declaration:** The Board of Directors has recommended 15% cash dividend and 25% stock dividend for the year ended on June 30, 2015. The Company will hold an EGM to make necessary changes in Memorandum of Association & Articles of Association of the Company and any others special business. Date of EGM & AGM: 27.12.2015, Time of EGM and AGM: 10:30 AM and 11:00 AM, Venue: Corporate Office at 37, Katalgonj, Panchlaish, Chittagong. Record Date: 15.11.2015

## Recent Dividend Declaration

Ticker	Dividend	Record Date
Beach Hatchery Ltd.	5%B	28.10.15

Note: C= cash Dividend, B= Bonus Dividend, R=Right, N/A=NotApplicable

## DSEX Technical Graph for last one year



### MTB CAPITAL LIMITED

Corporate head office

Level: 3, MTB Tower, 111, Kazi Nazrul Islam Avenue, Dhaka

Phone: 8321714, Fax: 8321543

[www.mtbcap.com](http://www.mtbcap.com)

*A mutual Trust Bank Company*

*you can invest with US*

## Disclaimer

This report has been prepared by the MTB Capital Limited (MTBCL) on the basis of available information in the market and it is provided for the purposes only. It is not to be used as an offer for buying or selling any instruments. If anyone takes any action relying on this information, shall be responsible solely by him/her self for any consequences. The best care has been taken to make the report informative. MTBCL doesn't give any warrant or guarantee that the report or such information is fully accurate. The information that are provided here is the exclusive property of MTBCL and can not be distributed without prior consent of MTBCL.