

Today's Market Overview

Sunday, October 04, 2015

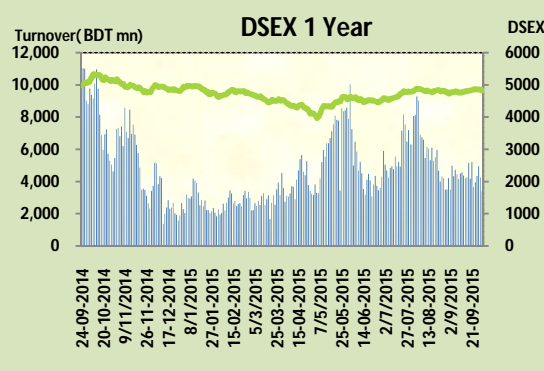


DSEX	4,814.61	-0.87%	Issues Traded	Advanced	Declined	Unchanged
Turnover (BDT mn)	3,368.06	-20.61%		56	239	27

Market observed a huge fall with a very sluggish turnover. Turnover was only 3.36 billion which was lowest in last 66 trading days. Market started with a negative mood and continued the same mood till the closure interestingly it didn't try for once to recover throughout the trading session. Investors' participation was very poor as some big cap stocks got an initial hiccup with the start of market. Slothful turnover actually provoked the investors to sell off. Other two indices DS30 & DSES the shariah based index both performed very poor. Most of the major sectors were loser. Travel was the worst loser followed by Telecom & NBFI.

The general gauge DSEX ended at 4814.61 with a decline of -0.9% which cut 42.36 points from the broad DSEX. The Turnover declined heavily by -20.6% which was only 874 Million BDT poorer than that of previous day and finally finished the mark at 3368.06 million BDT. A total of 56 issues advanced with 239 declined and 27 remained unchanged. Sectors that improved were: Food & allied (+0.1%) Tannery (+0.6%) & sectors that declined were: Bank (-0.5%) Cement (-1.0%) Ceramics (-0.6%) Engineering (-1.5%) NBFI (-1.4%) Pharmaceuticals (-0.6%) Power (-1.2%) Service (-1.4%) Telecom (-1.5%) Textile (-0.7%) Travel (-2.7%).

FARCHEM topped in the Volume chart with a turnover of 16.008 BDT crore. MODERN DYE ranked top gainer chart with a price hike of +8.00% and EBL1stMF topped in the loser chart with a decline of -6.4% from its prevailing price. BATBC led the way in the index mover chart while GP played the shatter part.



Index Scenario				Market Highlights				
INDEX	Change	% Changes		DSEX 52 week H/L	5334/3960	Market P/E (LTM)	15.80	
DSEX	4814.61	(42.36)	-0.9%	DSEX Week H/L	4867/4814	M.Cap (mn)	3334704.5	
DSES	1170.11	(12.02)	-1.0%	Group Performances				
DS30	1834.61	(16.66)	-0.9%	Category	Mkt Cap (mn.)	Δ % M.Cap	Turnover BDT (mn)	Δ % Turnover
Turnover Scenario				Group A	2,608,590.50	-0.8%	3,069.69	-17.0%
Today's Turnover (mn.)	Change In BDT (mn.)	% Change		Group B	14,280.50	-1.5%	82.47	2.4%
3368.06	(874)	-20.6%		Group N	29,060.99	-2.8%	173.34	12.0%
				Group Z	25,120.07	-0.7%	33.57	-14.4%

Top Ten Volume (in BDT. crore)											
Stock	TT	YT	AT	% Δ in Turnover	TT/AT	CP	YP	% Δ P	Number of shares	Public Holding	
FARCHEM	16.08	37.55	10.52	-57.2%	52.9%	46	48.6	-5.3%	109,237,878.0	12%	
SAIFPOWER	15.59	17.00	8.10	-8.3%	92.3%	92.5	93.7	-1.3%	70,985,380.0	19%	
LAFSURCEML	8.28	7.38	9.79	12.2%	-15.5%	106	107.5	-1.4%	1,161,373,500.0	30%	
SAPORTL	8.26	11.56	6.16	-28.6%	34.1%	61	61.8	-1.3%	171,762,330.6	24%	
SQURPHARMA	8.14	6.36	11.70	27.9%	-30.5%	247.8	249.2	-0.6%	623,586,546.0	9%	
AMANFEED	7.61	6.68	15.70	13.8%	-51.5%	59.7	62.9	-5.1%	80,000,000.0	23%	
ACI	7.60	7.01	7.01	8.5%	8.5%	573.1	583.3	-1.7%	39,553,240.3	27%	
GP	7.03	6.97	8.39	0.9%	-16.2%	281.7	285.8	-1.4%	1,350,300,022.0	4%	
QSM DRYCELL	6.92	3.61	4.61	91.6%	50.2%	78.2	80.5	-2.9%	36,799,488.0	54%	
BSRMSTEEL	6.79	7.43	8.06	-8.6%	-15.7%	92.8	94	-1.3%	341,775,000.0	13%	

TT= Today's Turnover in crore, YT= Yesterday's Turnover in Crore, AT= Average of Last 20 day's Turnover, CP= Current Price, YP= Yesterday's Price, % Δ P= percentage change in price

Top Ten Gainer						Top Ten Loser					
Stock	CP	YP	AP	% Δ P	% Δ in P from AP	Stock	CP	YP	AP	% Δ P	% Δ in P from AP
MODERNDYE	174.9	161.9	153.945	8.0%	13.6%	EBLISTMF	4.40	4.70	4.46	-6.4%	-1.3%
RAHIMTEXT	320.2	302.4	299.635	5.9%	6.9%	PRIMELIFE	40.00	42.60	42.74	-6.1%	-6.4%
JUTESPINN	58.6	55.7	63.045	5.2%	-7.1%	FARCHEM	46.00	48.60	51.37	-5.3%	-10.5%
4THICB	225	215.6	226.32	4.4%	-0.6%	AMANFEED	59.70	62.90	69.71	-5.1%	-14.4%
ZEALBANGLA	7.5	7.2	7.67	4.2%	-2.2%	BDFINANCE	11.80	12.40	11.17	-4.8%	5.7%
SHURWID	22.7	21.9	21.805	3.7%	4.1%	APEXFOODS	130.80	136.90	146.37	-4.5%	-10.6%
LEGACYFOOT	31.9	30.8	32.44	3.6%	-1.7%	EBLNBRMF	4.40	4.60	4.36	-4.3%	0.9%
FBFIF	7.2	7	6.925	2.9%	4.0%	SAFKOSPINN	18.80	19.60	20.81	-4.1%	-9.7%
PARAMOUNT	12.6	12.3	12.355	2.4%	2.0%	APEXTANRY	122.40	127.60	139.51	-4.1%	-12.3%
ICB1STNRB	17.4	17	18.465	2.4%	-5.8%	SONARGAON	9.50	9.90	9.31	-4.0%	2.1%

AP= Average Price of last 20 day,% Δ in P from AP= percentage change in price from the 20-day average price

Industry /Sectors overview (Amounts in BDT. Crore)											
Sector	Trade Volume		MKT Turnover %		% Δ in Turnover	Market Capitalization		% of Total MC		% Δ in MC	
	Today	Yesterday	Today	Yesterday		Today	Yesterday	Today	Yesterday		
Bank	24.57	32.52	0.07	0.08	-24.5%	40856.38	41064.40	15.29%	15.23%	-0.5%	
Cement	18.32	13.11	0.05	0.03	39.8%	18875.03	19071.33	7.06%	7.07%	-1.0%	
Ceramics	5.53	7.23	0.02	0.02	-23.6%	2748.57	2764.56	1.03%	1.03%	-0.6%	
Engineering	49.35	59.88	0.15	0.15	-17.6%	15245.64	15479.46	5.70%	5.74%	-1.5%	
Food & Allied Product	12.06	10.42	0.04	0.03	15.7%	24404.24	24391.29	9.13%	9.05%	0.1%	
Insurance	4.38	5.77	0.01	0.01	-24.1%	7238.34	7282.40	2.71%	2.70%	-0.6%	
IT	2.13	3.23	0.01	0.01	-34.0%	552.74	558.98	0.21%	0.21%	-1.1%	
Jute	0.29	0.66	0.00	0.00	-56.4%	100.02	100.39	0.04%	0.04%	-0.4%	
Miscellaneous	17.22	15.36	0.05	0.04	12.1%	8896.22	8959.99	3.33%	3.32%	-0.7%	
Mutual Fund	9.61	15.41	0.03	0.04	-37.6%	3556.03	3581.41	1.33%	1.33%	-0.7%	
NBFI	21.73	27.05	0.06	0.07	-19.7%	8538.02	8661.79	3.19%	3.21%	-1.4%	
Paper & Printing	1.23	1.23	0.00	0.00	0.3%	224.35	226.82	0.08%	0.08%	-1.1%	
Pharmaceuticals & Chemicals	58.64	73.68	0.18	0.19	-20.4%	41813.57	42048.57	15.64%	15.59%	-0.6%	
Power & Energy	38.57	49.21	0.12	0.12	-21.6%	38977.22	39454.72	14.58%	14.63%	-1.2%	
Service & Real Estate	25.20	32.92	0.08	0.08	-23.4%	2186.51	2218.32	0.82%	0.82%	-1.4%	
Tannery	4.69	3.56	0.01	0.01	31.9%	2584.84	2569.93	0.97%	0.95%	0.6%	
Telecommunication	8.32	9.27	0.02	0.02	-10.2%	39684.01	40278.11	14.85%	14.94%	-1.5%	
Textile	24.85	23.75	0.07	0.06	4.6%	8452.78	8512.48	3.16%	3.16%	-0.7%	
Travel & Leisure	8.08	13.80	0.02	0.03	-41.5%	2359.46	2425.16	0.88%	0.90%	-2.7%	

MC= Market Capitalization, % Δ in Turnover= change in turnover from last day, % Δ in MC= change in Market cap from last day

Index Movers	Index Shakers	Sector wise P/E			
BATBC	GP	Bank	8.90	NBFI	34.56
BRACBANK	LAFSURCEML	Cement	37.08	Paper & Printing	74.67
MARICO	SQURPHARMA	Ceramics	38.32	Pharmaceuticals & Chemicals	27.73
BATASHOE	ISLAMIBANK	Engineering	38.15	Power & Energy	16.56
PREMIERCEM	BSRMLTD	Food & Allied Product	35.19	Service & Real Estate	45.83
DBH	SUMITPOWER	Insurance	14.62	Tannery	35.05
NATLIFEINS	UPGDCL	IT	17.73	Telecommunication	24.47
FBFIF	KPCL	Jute	166.84	Textile	17.46
RUPALIBANK	POWERGRID	Miscellaneous	35.01	Travel & Leisure	15.27
NCCBANK	TITASGAS				

Important News

Company News:

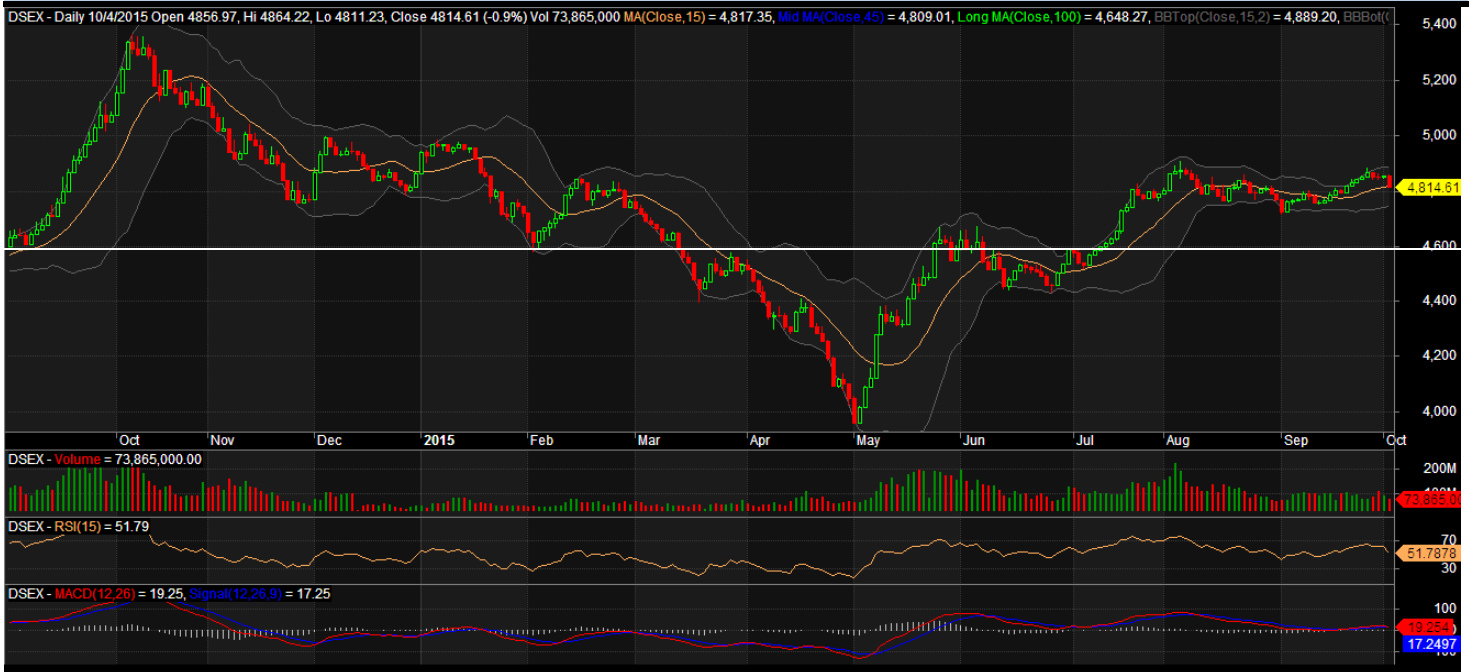
QSM DRYCELL: Dividend Declaration: The Board of Directors has recommended 10% stock dividend for the year ended on June 30, 2015. Date of AGM: 26.11.2015, Time: 10:30 AM, Venue: Hall - 2, RAOVA Complex, Mohakhali, Dhaka. Record Date: 22.10.2015. The Company has also reported EPS of Tk. 1.52, NAV per share of Tk. 49.99 and NOCFPS of Tk. 2.75 for the year ended on June 30, 2015.

Recent Dividend Declaration

Ticker	Dividend	Record Date
Matin Spinning Mills Ltd.	27% C	08.10.15
Premier Cement Mills Limited	20% C	18.10.15
SAIF Powertec Limited	29% B	15.10.15
Appollo Ispat Complex Limited	3% C & 12% B	14.10.15
Beach Hatchery Ltd.	5% B	28.10.15

Note: C= cash Dividend, B= Bonus Dividend, R=Right, N/A=NotApplicable

DSEX Technical Graph for last year year



MTB CAPITAL LIMITED

Corporate head office

Level: 3, MTB Tower, 111, Kazi Nazrul Islam Avenue, Dhaka

Phone: 8321714, Fax: 8321543

www.mtbcap.com

A mutual Trust Bank Company

you can invest with US

Disclaimer

This report has been prepared by the MTB Capital Limited (MTBCL) on the basis of available information in the market and it is provided for the purposes only. It is not to be used as an offer for buying or selling any instruments. If anyone takes any action relying on this information, shall be responsible solely by him/her self for any consequences. The best care has been taken to make the report informative. MTBCL doesn't give any warrant or guarantee that the report or such information is fully accurate. The information that are provided here is the exclusive property of MTBCL and can not be distributed without prior consent of MTBCL.