

Today's Market Overview

Monday, September 28, 2015

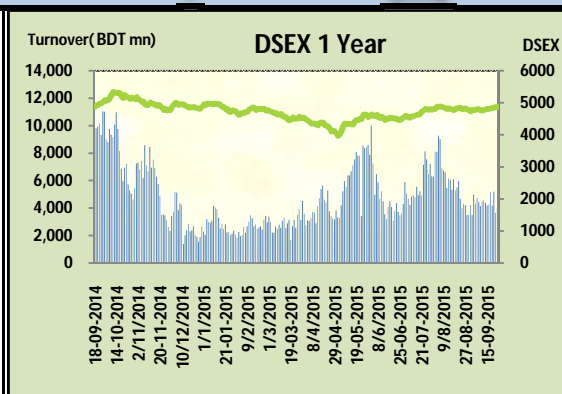


DSEX	4,866.76	0.28%	Issues Traded	Advanced	Declined	Unchanged
Turnover (BDT mn)	3,953.33	8.4%		147	124	45

Market started after five days' Eid Vacation but couldn't come out from the reluctant mood properly. The participation and turnover level showed lot of investors yet to connect the bourse. The premier bourse of the nation opened with huge enthusiasm but faded away with lower turnover as the time progressed. Market turnover failed to cross 4.0 billion mark but somehow managed to close above the green line. Some of the stocks from NBF1, Bank & Service sectors actually kept the market vibrant as investors put their input in expect of better result in upcoming quarter end. Other two indices DS30 & DSES the shariah based index both performed marginally positive. Most of the major sectors put a mixed performance. Telecom was the worst loser while Service sector lead the board.

The general gauge DSEX ended at 4866.76 with an advance of +0.3% which added 13.46 points to the broad DSEX. The Turnover advanced slightly by +8.4% which was only 306 Million BDT healthier than that of previous day and finally finished the mark at 3953.33 million BDT. A total of 147 issues advanced with 124 declined and 45 remained unchanged. Sectors that improved were: Bank (+0.7%) Cement (+2.7%) NBF1 (+2.6%) Service (+3.0%) Pharmaceuticals (+0.5%) & sectors that declined were: Ceramics (-0.3%) Engineering (-0.3%) Miscellaneous (-1.4%) Telecom (-1.7%) Power (-0.4%).

LAFSURCEML topped in the Volume chart with a turnover of 17.64 BDT crore. PREMEIRCEM ranked top gainer chart with a price hike of +19.1% and SHYAMPSUG topped in the loser chart with a decline of -5.4% from its prevailing price. LAFSURCEML led the way in the index mover chart while GP played the shatter part.



Index Scenario				Market Highlights					
	INDEX	Change	% Changes	DSEX 52 week H/L	5334/3960	Market P/E (LTM)	16.07		
	DSEX	4866.76	13.46	0.3%	DSEX Week H/L	4867/4819	M.Cap (mn)	3378960.4	
	DSES	1192.82	1.78	0.1%	Group Performances				
	DS30	1863.72	3.37	0.2%	Category	Mkt Cap (mn.)	Δ % M.Cap	Turnover BDT (mn)	Δ % Turnover
Turnover Scenario				Group A	2,650,488.97	0.1%	3,514.28	5.2%	
Today's Turnover (mn.)	Change In BDT (mn.)	% Change		Group B	14,551.70	0.0%	53.08	-26.0%	
3953.33	306	8.4%		Group N	30,286.30	-0.4%	173.68	-0.5%	
				Group Z	25,758.88	0.8%	25.55	-32.5%	

Top Ten Volume (in BDT. crore)											
Stock	TT	YT	AT	% Δ in Turnover	TT/AT	CP	YP	% Δ P	Number of shares	Public Holding	
LAFSURCEML	17.64	8.84	10.49	99.5%	68.2%	110.9	108.2	2.5%	1,161,373,500.0	30%	
SAIFPOWER	17.20	4.76	5.22	261.6%	229.8%	87.8	83.1	5.7%	70,985,380.0	19%	
BXPHERMA	15.96	8.30	9.40	92.3%	69.8%	72.4	71.7	1.0%	386,244,234.6	50%	
IDLC	14.73	6.27	4.20	134.8%	251.0%	64.3	61.7	4.2%	251,367,187.5	22%	
BSRMSTEEL	12.19	20.28	6.72	-39.9%	81.3%	95.5	96	-0.5%	341,775,000.0	13%	
GP	10.81	5.01	7.18	115.8%	50.6%	294.6	299.9	-1.8%	1,350,300,022.0	4%	
SQURPHARMA	10.63	5.68	13.75	87.0%	-22.7%	250.4	251.1	-0.3%	623,586,546.0	9%	
PREMIERCEM	9.89	0.50	1.13	1887.8%	773.6%	91.1	76.5	19.1%	105,450,000.0	10%	
ISLAMIBANK	9.88	3.42	9.13	189.3%	8.2%	30.8	30	2.7%	1,609,990,668.0	21%	
SAPORTL	9.47	5.67	4.88	67.1%	94.0%	60.5	58.3	3.8%	171,762,330.6	24%	

TT= Today's Turnover in crore, YT= Yesterday's Turnover in Crore, AT= Average of Last 20 day's Turnover, CP= Current Price, YP= Yesterday's Price, % Δ P= percentage change in price

Top Ten Gainer						Top Ten Loser					
Stock	CP	YP	AP	% Δ P	% Δ in P from AP	Stock	CP	YP	AP	% Δ P	% Δ in P from AP
PREMIERCEM	91.1	76.5	79.615	19.1%	14.4%	SHYAMPSUG	7.00	7.40	7.02	-5.4%	-0.3%
AIBL1STIMF	6.6	6	5.98	10.0%	10.4%	NORTHERN	328.70	346.30	328.25	-5.1%	0.1%
SPCERAMICS	12.4	11.4	10.595	8.8%	17.0%	2NDICB	266.90	280.00	282.58	-4.7%	-5.5%
UNITEDINS	26.3	24.7	25.375	6.5%	3.6%	AZIZPIPES	23.50	24.50	22.70	-4.1%	3.5%
ASIAINS	14.9	14.1	14.135	5.7%	5.4%	1STICB	1,440.00	1,500.00	1,553.39	-4.0%	-7.3%
SAIFPOWER	87.8	83.1	82.17	5.7%	6.9%	ZAHINTEX	22.90	23.80	22.07	-3.8%	3.8%
DBH	101.5	96.4	96.795	5.3%	4.9%	PRIMETEX	18.60	19.30	19.77	-3.6%	-5.9%
PRIMELIFE	45.2	43.2	41.64	4.6%	8.5%	CENTRALINS	17.50	18.10	18.02	-3.3%	-2.9%
BDFINANCE	11.9	11.4	10.805	4.4%	10.1%	PUBALIBANK	23.60	24.40	23.78	-3.3%	-0.8%
PF1STMF	4.8	4.6	4.73	4.3%	1.5%	PUBALIBANK	23.60	24.40	23.78	-3.3%	-0.8%

AP= Average Price of last 20 day,% Δ in P from AP= percentage change in price from the 20-day average price

Industry /Sectors overview (Amounts in BDT. Crore)											
Sector	Trade Volume		MKT Turnover %		% Δ in Turnover	Market Capitalization		% of Total MC		% Δ in MC	
	Today	Yesterday	Today	Yesterday		Today	Yesterday	Today	Yesterday		
Bank	32.79	22.56	0.09	0.06	45.4%	40571.33	40290.97	14.94%	14.85%	0.7%	
Cement	35.08	13.17	0.09	0.04	166.3%	19487.54	18977.70	7.17%	6.99%	2.7%	
Ceramics	3.24	6.49	0.01	0.02	-50.2%	2926.78	2936.27	1.08%	1.08%	-0.3%	
Engineering	59.85	73.53	0.16	0.20	-18.6%	15663.10	15715.80	5.77%	5.79%	-0.3%	
Food & Allied Product	14.49	18.98	0.04	0.05	-23.6%	24515.09	24450.24	9.02%	9.01%	0.3%	
Insurance	4.10	4.61	0.01	0.01	-11.0%	7307.17	7298.81	2.69%	2.69%	0.1%	
IT	1.44	1.62	0.00	0.00	-11.0%	551.85	551.53	0.20%	0.20%	0.1%	
Jute	0.38	1.71	0.00	0.00	-77.9%	102.99	106.17	0.04%	0.04%	-3.0%	
Miscellaneous	15.30	17.67	0.04	0.05	-13.4%	8973.89	9099.16	3.30%	3.35%	-1.4%	
Mutual Fund	4.78	3.59	0.01	0.01	33.3%	3466.02	3463.64	1.28%	1.28%	0.1%	
NBFI	33.37	19.24	0.09	0.05	73.4%	8668.07	8448.65	3.19%	3.11%	2.6%	
Paper & Printing	0.72	1.31	0.00	0.00	-45.4%	227.26	227.80	0.08%	0.08%	-0.2%	
Pharmaceuticals & Chemicals	56.03	45.89	0.15	0.13	22.1%	42250.67	42027.18	15.55%	15.49%	0.5%	
Power & Energy	41.36	56.91	0.11	0.16	-27.3%	39580.35	39721.49	14.57%	14.64%	-0.4%	
Service & Real Estate	28.33	14.02	0.08	0.04	102.1%	2154.49	2091.16	0.79%	0.77%	3.0%	
Tannery	3.55	6.46	0.01	0.02	-45.0%	2627.54	2637.92	0.97%	0.97%	-0.4%	
Telecommunication	13.68	7.94	0.04	0.02	72.2%	41611.79	42342.44	15.32%	15.60%	-1.7%	
Textile	18.98	35.13	0.05	0.10	-46.0%	8600.91	8632.98	3.17%	3.18%	-0.4%	
Travel & Leisure	6.99	9.43	0.02	0.03	-25.9%	2358.75	2359.47	0.87%	0.87%	0.0%	

MC= Market Capitalization, % Δ in Turnover= change in turnover from last day, % Δ in MC= change in Market cap from last day

Index Movers	Index Shakers	Sector wise P/E			
LAFSURCEML	GP	Bank	8.81	NBFI	36.86
MARICO	BERGERPBL	Cement	38.74	Paper & Printing	80.14
PREMIERCEM	PUBALIBANK	Ceramics	40.28	Pharmaceuticals & Chemicals	28.07
ISLAMIBANK	TITASGAS	Engineering	39.17	Power & Energy	16.97
BATBC	SPCL	Food & Allied Product	35.34	Service & Real Estate	45.72
IDLC	UPGDCL	Insurance	14.83	Tannery	35.08
DBH	SQURPHARMA	IT	17.67	Telecommunication	26.49
BRACBANK	SINGERBD	Jute	172.06	Textile	17.68
CITYBANK	OLYMPIC	Miscellaneous	34.96	Travel & Leisure	15.22
UCBL	JAMUNAOIL				

Important News

Company News:

PREMIERCEM: Dividend Declaration: The Board of Directors has recommended 20% cash dividend for the year ended on 30.06.15. Date of AGM: 29.10.2015, Time: 11:00 AM, Venue: Auditorium of Chittagong Club Limited, S.S. Khaled Road, Chittagong. Record Date: 18.10.2015. The Company has also reported Profit after tax of Tk. 403.91 million, EPS of Tk. 3.83, NAV per share of Tk. 32.22 and NOCFPS of Tk. 3.73 for the year ended on 30.06.15 as against Tk. 504.15 million, Tk. 4.78, Tk. 31.34 and Tk. 0.48 respectively for the year ended on 30.06.14.

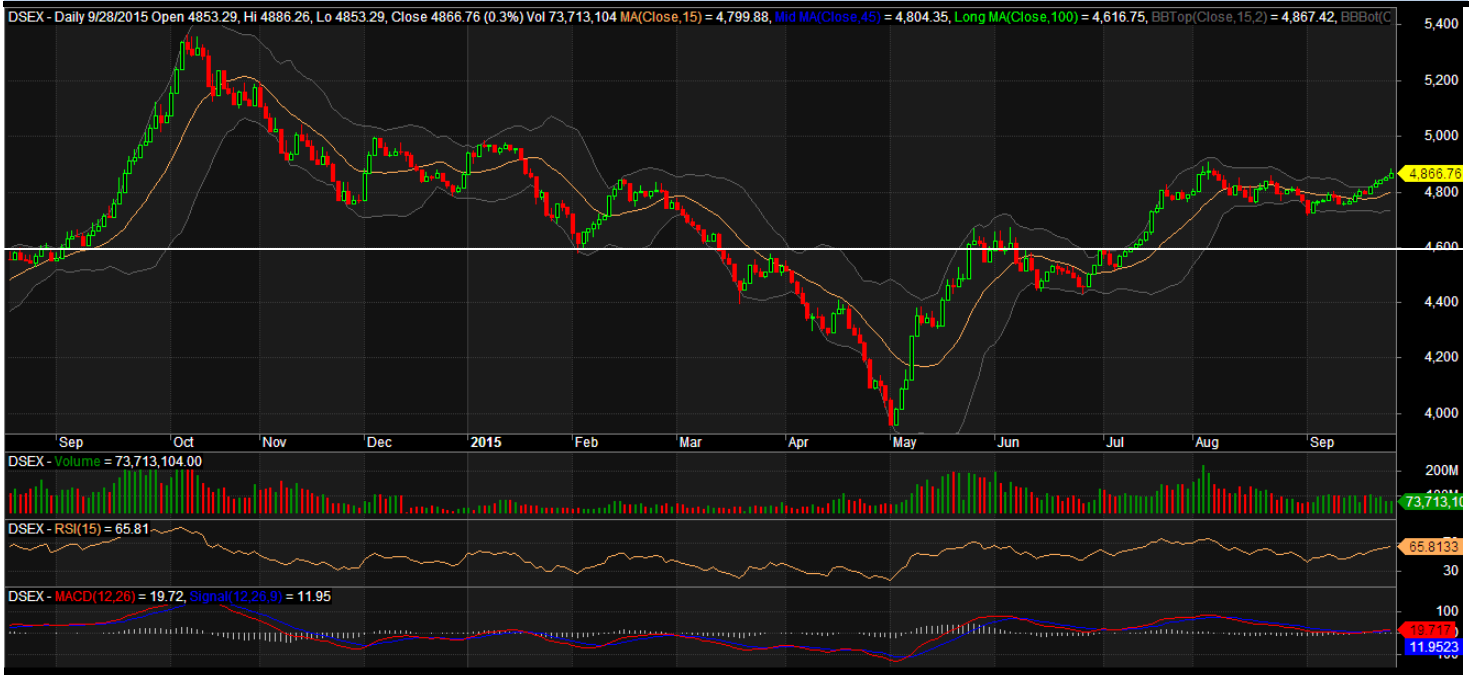
SAIFPOWER: Agreement Signing with Chittagong Port Authority (CPA): The Company has informed that they have signed a contract with Chittagong Port Authority (CPA) for Appointment of Terminal Operator for Handling of Container and Containerized Cargo at Berth No - 2 and 3 of New Mooring Container Terminal (NCT) for a period of 02 years. The value of the contract price is Tk. 49,87,33,000.00 only.

Recent Dividend Declaration

Ticker	Dividend	Record Date
Bangladesh Submarine Cable Company Limited	10%B	29.09.15
Matin Spinning Mills Ltd.	27%C	08.10.15

Note: C= cash Dividend, B= Bonus Dividend, R=Right, N/A=NotApplicable

DSEX Technical Graph for last one year



MTB CAPITAL LIMITED

Corporate head office

Level: 3, MTB Tower, 111, Kazi Nazrul Islam Avenue, Dhaka

Phone: 8321714, Fax: 8321543

www.mtbcap.com

A mutual Trust Bank Company

you can invest with US

Disclaimer

This report has been prepared by the MTB Capital Limited (MTBCL) on the basis of available information in the market and it is provided for the purposes only. It is not to be used as an offer for buying or selling any instruments. If anyone takes any action relying on this information, shall be responsible solely by him/her self for any consequences. The best care has been taken to make the report informative. MTBCL doesn't give any warrant or guarantee that the report or such information is fully accurate. The information that are provided here is the exclusive property of MTBCL and can not be distributed without prior consent of MTBCL.