

Today's Market Overview



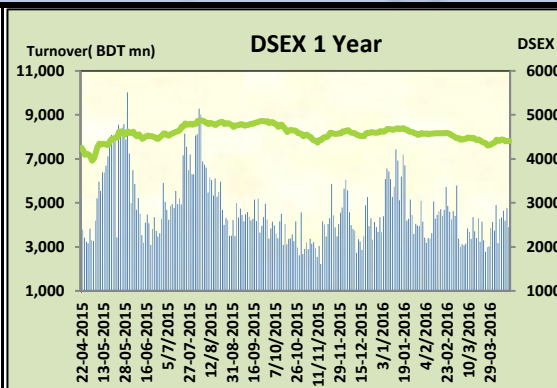
Wednesday, April 13, 2016

DSEX	4,408.64	0.03%	Issues Traded	↑ Advanced 120	↓ Declined 141	↔ Unchanged 55
Turnover (BDT mn)	3,900.74	-17.87%				

Market observed a flat movement but turnover was very poor. The premier bourse of the nation opened with positive mood but soon after the first hour vigorous sale pressure took place and plunged the market in the red zone, market observed several see-saw movement throughout the session. Lastly market ended with a flat gain. Turnover failed to keep the momentum and crossed only 3.9 billion. Actually Most of the major sectors observed harshness except Power sector. Among the Power sector Fuel segment observed heavy buoyancy while investors were busy in picking profit from other sectors to shift towards Power sector. Major concentration occurred in Power sector while Cement, Pharmaceuticals & Engineering observed offloading tendency. Among the other two indices DS30 performed marginally positive while DSES the shariah based index failed to put green. Power was the best gainer followed by miscellaneous & Food while Service was the worst loser followed by Engineering & Ceramics.

The general gauge DSEX ended at 4408.64 with an advance of 0.025% which added only 1.12 points to the broad DSEX. The Turnover declined heavily by -17.9% which was 849 Million BDT poorer than that of previous day and finally finished the mark at 3900.74 million BDT. A total of 120 issues advanced with 141 declined and 55 remained unchanged. Sectors that improved were: Food (+0.7%) Miscellaneous (+0.8%) Power (+1.0%) Mutual Fund (+0.4%) & Sectors that declined were: Bank (-0.5%) Cement (-0.3%) Ceramics (-1.0%) Engineering (-0.9%) NBFI (-0.5%) Pharmaceuticals (-0.1%) Service (-1.1%) Textiles (-0.5%).

JAMUNAOIL topped in the Volume chart with a turnover of 22.62 BDT crore. ECABLES ranked top in gainer chart with a price hike of +10.0 % and DOREENPWR topped in the loser chart with a decline of -7.3% from its prevailing price. JAMUNAOIL led the way in the index mover chart while BSRMLTD played the shatter part.



Index Scenario				Market Highlights				
INDEX	Change	% Changes		DSEX 52 week H/L	4992/3960	Market P/E (LTM)	13.80	
DSEX	4408.64	1.12	0.0%	DSEX Week H/L	4443/4401	M.Cap	3085177.7	
DSES	1065.99	(1.27)	-0.1%	Group Performances				
DS30	1683.35	4.48	0.3%	Category	Mkt Cap (mn.)	Δ % M.Cap	Turnover BDT (mn)	Δ % Turnover
Turnover Scenario				Group A	2,358,080.65	0.1%	3,041.99	2.9%
Today's Turnover (mn.)	Change In BDT (mn.)	% Change		Group B	11,650.43	-1.1%	85.68	1.6%
3900.74	(849)	-17.9%		Group N	43,906.87	-0.7%	541.15	8.3%
				Group Z	40,279.33	-0.9%	105.29	-35.2%

Top Ten Volume (in BDT. crore)										
Stock	TT	YT	AT	% Δ in Turnover	TT/AT	CP	YP	% Δ P	Number of shares	Public Holding
JAMUNAOIL	22.62	8.17	2.66	176.9%	748.9%	193	177.2	8.9%	110,424,600.0	20%
AMANFEED	21.10	15.14	11.68	39.4%	80.6%	87.5	84	4.2%	80,000,000.0	23%
MJLBD	16.31	3.16	3.19	416.0%	410.8%	95.9	92.1	4.1%	274,244,180.0	9%
DOREENPWR	15.92	15.37	26.90	3.6%	-40.8%	65.8	71	-7.3%	80,000,000.0	23%
LANKABAFIN	14.97	14.13	10.78	6.0%	38.9%	35.1	36.3	-3.3%	276,739,950.1	61%
MPETROLEUM	12.17	10.72	2.11	13.6%	476.4%	177.1	169.8	4.3%	108,216,108.0	17%
POWERGRID	12.08	8.23	6.06	46.8%	99.2%	62	62	0.0%	460,912,991.0	5%
BSRMLTD	9.78	12.53	12.66	-22.0%	-22.8%	183.4	189.9	-3.4%	190,686,141.8	9%
KEYACOSMET	7.97	12.62	13.63	-36.9%	-41.5%	14.1	14.5	-2.8%	707,702,444.0	66%
BXPHARMA	7.56	3.24	5.61	133.4%	34.8%	84.1	83.9	0.2%	386,244,234.6	50%

TT= Today's Turnover in crore, YT= Yesterday's Turnover in Crore, AT= Average of Last 20 day's Turnover, CP= Current Price, YP= Yesterday's Price, % Δ P= percentage change in price

Top Ten Gainer

Top Ten Loser

Stock	CP	YP	AP	% Δ P	% Δ in P from AP	Stock	CP	YP	AP	% Δ P	% Δ in P from AP
ECABLES	144.2	131.1	109.755	10.0%	31.4%	DOREENPWR	65.80	71.00	NM	-7.3%	NM
RDFOOD	14.4	13.1	14.55	9.9%	-1.0%	EASTERNINS	22.50	23.70	23.73	-5.1%	-5.2%
JAMUNAOIL	193	177.2	157.01	8.9%	22.9%	BDLAMPS	175.10	183.00	181.51	-4.3%	-3.5%
ARAMIT	496.1	456.4	417.175	8.7%	18.9%	AIBLISTIMF	7.00	7.30	6.98	-4.1%	0.3%
KAY&QUE	19.3	17.9	18.325	7.8%	5.3%	APEXSPINN	91.70	95.60	92.26	-4.1%	-0.6%
GEMINISEA	886.2	824.4	718.285	7.5%	23.4%	SAMATALETF	23.60	24.50	24.57	-3.7%	-3.9%
SAFKOSPINN	16.6	15.5	16.59	7.1%	0.1%	ILFSL	8.00	8.30	8.59	-3.6%	-6.8%
ZAHEENSPIN	22.7	21.5	23.465	5.6%	-3.3%	BSRMLTD	183.40	189.90	182.50	-3.4%	0.5%
MEGHNACEM	93	88.1	89.995	5.6%	3.3%	PRIMELIFE	58.20	60.20	64.89	-3.3%	-10.3%
ICB	106	100.5	100.585	5.5%	5.4%	LANKABAFIN	35.10	36.30	33.85	-3.3%	3.7%

AP= Average Price of last 20 day,% Δ in P from AP= percentage change in price from the 20-day average price

Industry /Sectors overview (Amounts in BDT. Crore)

Sector	Trade Volume		MKT Turnover %		% Δ in Turnover	Market Capitalization		% of Total MC		% Δ in MC
	Today	Yesterday	Today	Yesterday		Today	Yesterday	Today	Yesterday	
Bank	20.26	18.34	0.05	0.05	10.5%	37946.07	38022.81	15.50%	15.54%	-0.2%
Cement	4.56	8.92	0.01	0.02	-48.9%	13590.21	13626.66	5.55%	5.57%	-0.3%
Ceramics	3.46	4.63	0.01	0.01	-25.2%	2562.86	2587.44	1.05%	1.06%	-1.0%
Engineering	45.08	53.91	0.12	0.15	-16.4%	15684.15	15818.81	6.41%	6.47%	-0.9%
Food & Allied Product	16.61	16.02	0.04	0.04	3.7%	23324.43	23171.15	9.53%	9.47%	0.7%
Insurance	7.29	10.18	0.02	0.03	-28.4%	7199.77	7245.77	2.94%	2.96%	-0.6%
IT	4.39	6.32	0.01	0.02	-30.5%	968.91	975.15	0.40%	0.40%	-0.6%
Jute	0.75	0.79	0.00	0.00	-5.4%	85.61	85.61	0.03%	0.03%	0.0%
Miscellaneous	42.52	31.15	0.11	0.09	36.5%	8458.98	8388.61	3.46%	3.43%	0.8%
Mutual Fund	2.38	1.87	0.01	0.01	27.5%	3652.14	3639.19	1.49%	1.49%	0.4%
NBFI	28.89	25.45	0.08	0.07	13.5%	8025.24	8069.44	3.28%	3.30%	-0.5%
Paper & Printing	0.45	0.47	0.00	0.00	-3.0%	169.86	170.08	0.07%	0.07%	-0.1%
Pharmaceuticals & Chemicals	48.51	62.99	0.13	0.17	-23.0%	41363.90	41422.82	16.90%	16.93%	-0.1%
Power & Energy	114.10	87.12	0.31	0.24	31.0%	35033.58	34680.94	14.31%	14.17%	1.0%
Service & Real Estate	4.98	6.50	0.01	0.02	-23.4%	1717.46	1736.46	0.70%	0.71%	-1.1%
Tannery	1.96	1.54	0.01	0.00	27.3%	2153.08	2158.36	0.88%	0.88%	-0.2%
Telecommunication	3.25	2.43	0.01	0.01	34.1%	33279.77	33279.77	13.60%	13.60%	0.0%
Textile	18.92	23.08	0.05	0.06	-18.0%	7628.11	7664.23	3.12%	3.13%	-0.5%
Travel & Leisure	1.77	1.74	0.00	0.00	2.2%	1912.05	1925.01	0.78%	0.79%	-0.7%

MC= Market Capitalization, % Δ in Turnover= change in turnover from last day, % Δ in MC= change in Market cap from last day

Index Movers	Index Shakers	Sector wise P/E (Fd.)			
JAMUNAOIL	BSRMLTD	Bank	7.73	NBFI	37.74
MJLBD	ISLAMIBANK	Cement	28.67	Paper & Printing	90.48
BATBC	DOREENPWR	Ceramics	33.64	Pharmaceuticals & Chemicals	26.52
MPETROLEUM	LANKABAFIN	Engineering	80.26	Power & Energy	16.28
PADMAOIL	LINDEBD	Food & Allied Product	30.06	Service & Real Estate	30.50
SQRPHARMA	RAK CERAMIC	Insurance	13.38	Tannery	33.78
OLYMPIC	GLAXOSMITH	IT	102.17	Telecommunication	26.01
DUTCHBANGL	PREMIERCEM	Jute	157.75	Textile	16.76
ECABLES	BSRMSTEEL	Miscellaneous	34.12	Travel & Leisure	19.90
TITASGAS	ACI				

Important News

Company News:

BDFINANCE: Board Meeting schedule under LR 19(1): As per Regulation 19(1) of the Dhaka Stock Exchange (Listing) Regulations, 2015, the Company has informed that a meeting of the Board of Directors will be held on April 23, 2016 at 11:30 AM to consider, among others, audited financial statements of the Company for the year ended on December 31, 2015.

BEXIMCO: Board Meeting schedule under LR 19(1): As per Regulation 19(1) of the Dhaka Stock Exchange (Listing) Regulations, 2015, the Company has informed that a meeting of the Board of Directors will be held on April 20, 2016 at 4:00 PM to consider, among others, audited financial statements of the Company for the year ended on December 31, 2015.

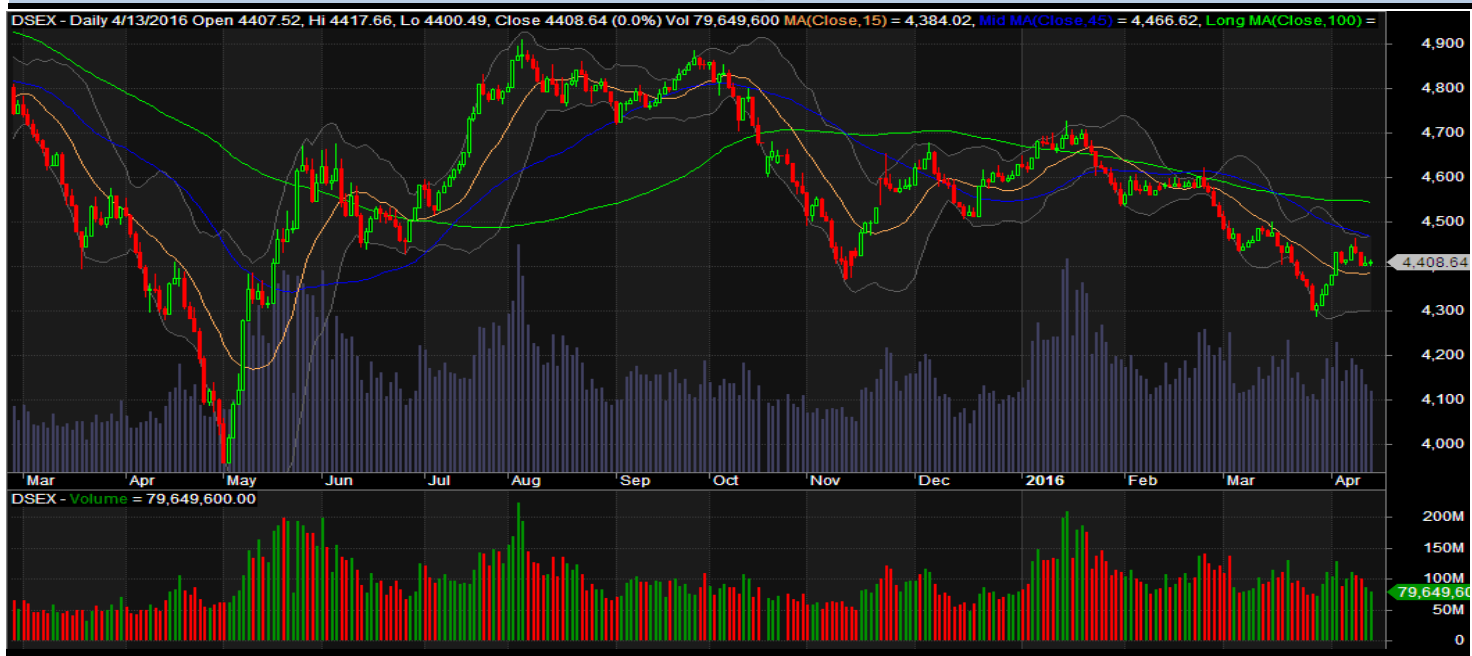
BXPHARMA: Board Meeting schedule under LR 19(1): As per Regulation 19(1) of the Dhaka Stock Exchange (Listing) Regulations, 2015, the Company has informed that a meeting of the Board of Directors will be held on April 20, 2016 at 3:30 PM to consider, among others, audited financial statements of the Company for the year ended on December 31, 2015.

Recent Dividend Declaration

Ticker	Dividend	Record Date
Eastern Bank Ltd.	20% C & 15% B	25.04.2016
Nitol Insurance Company Ltd.	12% B	25.04.2016
Apex Footwear Limited	50% C	19.04.2016
Mercantile Bank Ltd.	12% C	26.04.2016
GSP Finance Company (Bangladesh) Ltd.	15.5% C	26.04.2016

Note: C= cash Dividend, B= Bonus Dividend, R=Right, N/A=NotApplicable

DSEX Technical Graph for last one year



MTB CAPITAL LIMITED

Corporate head office

Level: 3, MTB Tower, 111, Kazi Nazrul Islam Avenue, Dhaka

Phone: 8321714, Fax: 8321543

www.mtbcap.com

A Mutual Trust Bank Company

you can invest with us

Disclaimer

This report has been prepared by the MTB Capital Limited (MTBCL) on the basis of available information in the market and it is provided for the purposes only. It is not to be used as an offer for buying or selling any instruments. If anyone takes any action relying on this information, shall be responsible solely by him/her self for any consequences. The best care has been taken to make the report informative. MTBCL doesn't give any warrant or guarantee that the report or such information is fully accurate. The information that are provided here is the exclusive property of MTBCL and can not be distributed without prior consent of MTBCL.