

Today's Market Overview

Thursday, September 10, 2015

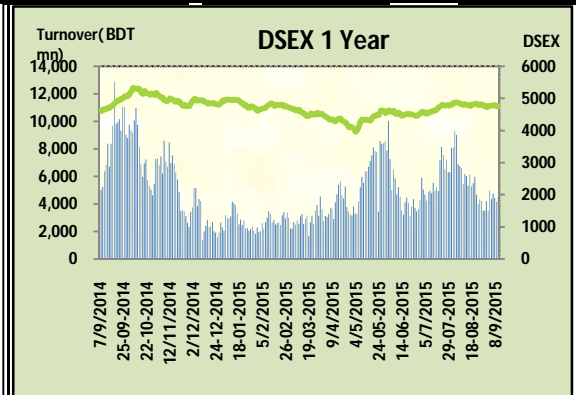


DSEX	4,760.14	0.04%	Issues Traded	↑ Advanced 156	↓ Declined 117	↔ Unchanged 47
Turnover (BDT mn)	4,482.95	7.8%				

Tumble in Telecom & quick profit booking from NBFIs created the sufferings but better participation in low cap stocks & MNCs pushed back the market in flat movement. The premier bourse of the nation opened with a positive note but couldn't sustain long as investors intensified their selling binge after the midsession. Last hour buy pressure in some small cap stocks somehow managed to pull back the market in even track. Most of the active investors remained in vigilant posture while retail investors were busy in choppy trading. Other two indices DS30 & DSES the shariah based index both performed marginally poor. Engineering, Pharmaceuticals, Jute & Tannery put a good show while NBFi, Telecom & Cement were busy in absorbing supply glut.

The general gauge DSEX ended at 4760.14 with an advance of +0.03% which added 1.71 points to the broad DSEX. The Turnover advanced by +7.8% which was 326 Million BDT healthier than that of previous day and finally finished the mark at 4482.95 million BDT. A total of 156 issues advanced with 117 declined and 47 remained unchanged. Sectors that improved were: Pharmaceuticals (+0.7%) Engineering (+1.2%) Ceramics (+0.7%) Tannery (+2.3%) Jute (+5.1%) Miscellaneous (+0.9%) Insurance (+0.2%) & sectors that declined were: Cement (-0.5%) Power (-0.3%) NBFi (-1.0%) Service (-0.2%) Telecom (-1.1%).

BSRMLTD topped in the Volume chart with a turnover of 16.85 BDT crore. MODERN DYE ranked top gainer chart with a price hike of +10.0% and APEXTANRY topped in the loser chart with a decline of -4.3% from its prevailing price. MARICO led the way in the index mover chart while GP played the shatter part.



Index Scenario				Market Highlights					
	INDEX	Change	% Changes	DSEX 52 week H/L	5334/3960	Market P/E (LTM)	15.81		
	DSEX	4760.14	1.71	0.0%	DSEX Week H/L	4792/4758	M.Cap (mn)	3331881.6	
	DSES	1167.66	(0.24)	0.0%	Group Performances				
	DS30	1814.59	(1.19)	-0.1%	Category	Mkt Cap (mn.)	Δ % M.Cap	Turnover BDT (mn)	Δ % Turnover
	Turnover Scenario			Group A	2,602,434.92	-0.1%	3,862.04	8.6%	
	Today's Turnover (mn.)	Change In BDT (mn.)	% Change	Group B	14,932.62	1.1%	227.89	33.7%	
	4482.95	326	7.8%	Group N	29,845.27	-1.3%	221.88	-7.8%	
				Group Z	25,439.87	-0.4%	42.61	-19.1%	

Top Ten Volume (in BDT. crore)										
Stock	TT	YT	AT	% Δ in Turnover	TT/AT	CP	YP	% Δ P	Number of shares	Public Holding
BSRMLTD	16.85	3.58	7.32	370.1%	130.2%	119.1	111.2	7.1%	173,351,038.0	9%
SQURPHARMA	13.43	21.88	19.35	-38.6%	-30.6%	248.8	249.9	-0.4%	623,586,546.0	9%
ACI	12.21	2.38	4.64	412.1%	162.9%	565.3	545.8	3.6%	39,553,240.3	27%
LAFSURCEML	12.11	7.81	12.63	55.1%	-4.1%	108	109.9	-1.7%	1,161,373,500.0	30%
AMANFEED	11.96	14.60	28.58	-18.1%	-58.2%	72.9	72.6	0.4%	80,000,000.0	23%
GP	11.31	14.64	7.24	-22.8%	56.2%	305.5	309	-1.1%	1,350,300,022.0	4%
HEIDELBCEM	10.78	9.62	2.16	12.1%	400.0%	652.8	639.9	2.0%	56,503,580.0	16%
AL-HAJTEX	10.29	4.23	6.87	143.5%	49.8%	129.8	120.8	7.5%	15,230,211.6	72%
LINDEBD	9.54	3.31	3.13	188.5%	205.2%	1387.3	1312.5	5.7%	15,218,280.0	19%
IBNSINA	7.97	4.89	4.38	63.0%	82.0%	157	146.7	7.0%	22,453,200.0	46%

TT= Today's Turnover in crore, YT= Yesterday's Turnover in Crore, AT= Average of Last 20 day's Turnover, CP= Current Price, YP= Yesterday's Price, % Δ P= percentage change in price

Top Ten Gainer						Top Ten Loser					
Stock	CP	YP	AP	% Δ P	% Δ in P from AP	Stock	CP	YP	AP	% Δ P	% Δ in P from AP
MODERNDYE	157.9	143.6	101.87	10.0%	55.0%	APEXTANRY	142.80	149.20	152.80	-4.3%	-6.5%
ICBEPMF1S1	6.8	6.2	6.13	9.7%	10.9%	ZEALBANGLA	8.00	8.30	7.37	-3.6%	8.5%
IMAMBUTTON	13.7	12.5	11.09	9.6%	23.5%	ZAHINTEX	21.30	22.00	22.18	-3.2%	-3.9%
MIRACLEIND	19.9	18.3	17.295	8.7%	15.1%	GEMINISEA	408.90	422.30	410.52	-3.2%	-0.4%
AL-HAJTEX	129.8	120.8	128.685	7.5%	0.9%	RAHIMTEXT	295.90	304.60	294.22	-2.9%	0.6%
AZIZPIPES	23.5	21.9	21.48	7.3%	9.4%	ASIAINS	13.90	14.30	14.06	-2.8%	-1.1%
BSRMLTD	119.1	111.2	113.72	7.1%	4.7%	OAL	52.70	54.20	57.58	-2.8%	-8.5%
NORTHERN	343.9	321.1	332.425	7.1%	3.5%	PHOENIXFIN	17.60	18.10	17.46	-2.8%	0.8%
ISLAMIINS	18.2	17	16.025	7.1%	13.6%	KPPL	18.50	19.00	19.15	-2.6%	-3.4%
IBNSINA	157	146.7	137.285	7.0%	14.4%	LANKABAFIN	30.90	31.70	29.02	-2.5%	6.5%

AP= Average Price of last 20 day,% Δ in P from AP= percentage change in price from the 20-day average price

Industry /Sectors overview (Amounts in BDT. Crore)											
Sector	Trade Volume		MKT Turnover %		% Δ in Turnover	Market Capitalization		% of Total MC		% Δ in MC	
	Today	Yesterday	Today	Yesterday		Today	Yesterday	Today	Yesterday		
Bank	30.43	27.91	0.07	0.07	9.0%	39243.50	39230.69	14.71%	14.70%	0.0%	
Cement	33.42	24.22	0.08	0.06	37.9%	19145.23	19232.34	7.18%	7.21%	-0.5%	
Ceramics	9.22	6.98	0.02	0.02	32.2%	2825.39	2806.36	1.06%	1.05%	0.7%	
Engineering	66.13	41.35	0.15	0.10	59.9%	14774.28	14598.67	5.54%	5.47%	1.2%	
Food & Allied Product	20.45	19.17	0.05	0.05	6.7%	24038.97	24103.03	9.01%	9.03%	-0.3%	
Insurance	7.78	6.14	0.02	0.02	26.6%	7175.06	7159.84	2.69%	2.68%	0.2%	
IT	2.92	2.95	0.01	0.01	-1.2%	553.59	552.29	0.21%	0.21%	0.2%	
Jute	0.81	0.48	0.00	0.00	68.1%	107.28	102.04	0.04%	0.04%	5.1%	
Miscellaneous	32.63	28.42	0.08	0.07	14.8%	8837.84	8758.34	3.31%	3.28%	0.9%	
Mutual Fund	12.21	15.47	0.03	0.04	-21.1%	3163.32	3157.11	1.19%	1.18%	0.2%	
NBFI	14.70	35.91	0.03	0.09	-59.1%	8283.24	8366.89	3.11%	3.13%	-1.0%	
Paper & Printing	2.96	2.06	0.01	0.01	43.8%	234.68	238.53	0.09%	0.09%	-1.6%	
Pharmaceuticals & Chemicals	69.51	66.91	0.16	0.17	3.9%	41182.75	40904.99	15.44%	15.33%	0.7%	
Power & Energy	53.79	45.72	0.12	0.11	17.7%	38510.27	38609.60	14.44%	14.47%	-0.3%	
Service & Real Estate	7.47	9.04	0.02	0.02	-17.4%	2014.98	2020.02	0.76%	0.76%	-0.2%	
Tannery	8.46	3.46	0.02	0.01	144.2%	2641.61	2582.81	0.99%	0.97%	2.3%	
Telecommunication	13.08	16.43	0.03	0.04	-20.4%	42999.66	43479.76	16.12%	16.29%	-1.1%	
Textile	38.82	32.99	0.09	0.08	17.7%	8691.76	8683.24	3.26%	3.25%	0.1%	
Travel & Leisure	8.95	13.03	0.02	0.03	-31.3%	2328.59	2324.19	0.87%	0.87%	0.2%	

MC= Market Capitalization, % Δ in Turnover= change in turnover from last day, % Δ in MC= change in Market cap from last day

Index Movers	Index Shakers	Sector wise P/E			
MARICO	GP	Bank	8.64	NBFI	33.30
BSRMLTD	LAFSURCEML	Cement	39.35	Paper & Printing	82.59
LINDEBD	BATBC	Ceramics	44.54	Pharmaceuticals & Chemicals	26.71
NBL	SQURPHARMA	Engineering	37.85	Power & Energy	16.79
ACI	SPCL	Food & Allied Product	34.12	Service & Real Estate	43.26
RENATA	BRACBANK	Insurance	14.37	Tannery	36.27
BERGERPBL	ISLAMIBANK	IT	17.82	Telecommunication	26.24
HEIDELBCEM	UPGDCL	Jute	179.34	Textile	17.98
BATASHOE	KPCL	Miscellaneous	34.05	Travel & Leisure	15.03
DUTCHBANGL	MJLBD				

Important News

Company News:

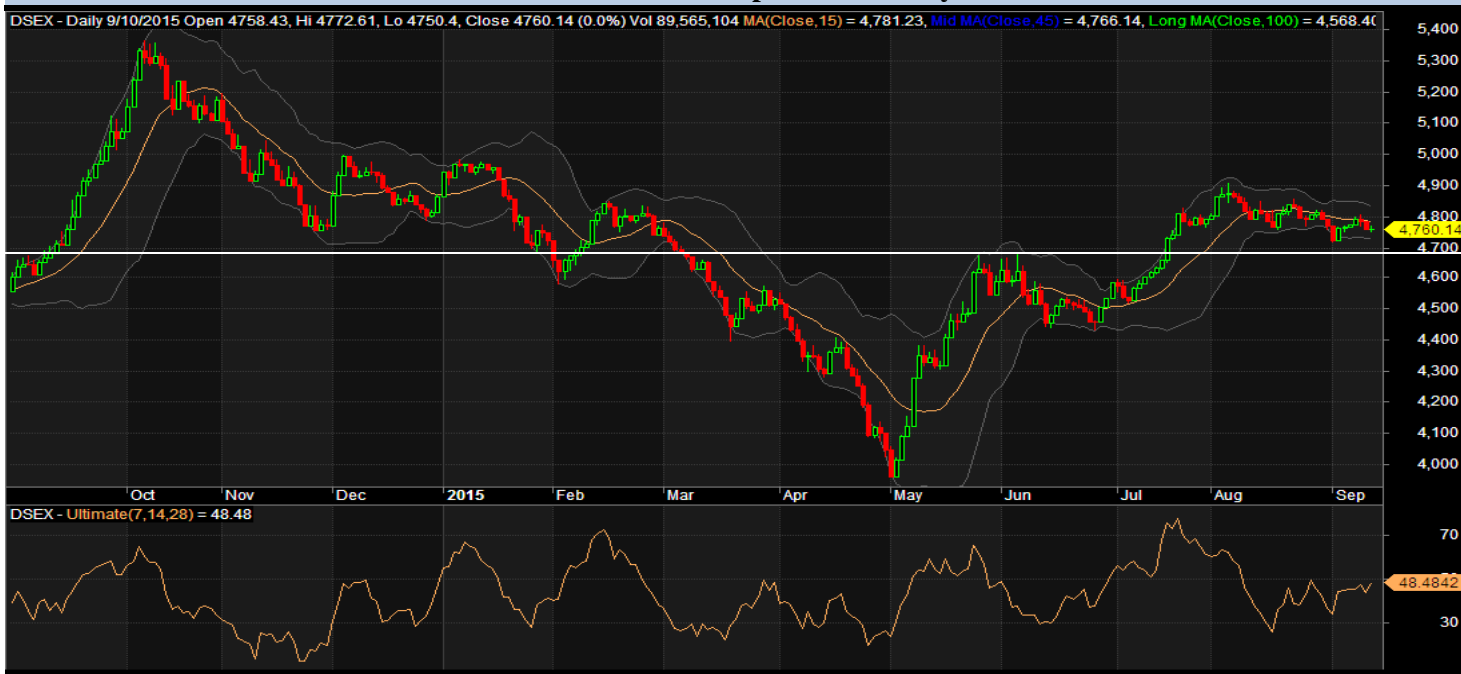
PRIMELIFE: Cancellation of Land Purchase: Referring to their earlier news (disseminated on 04.05.15) regarding Purchase of land at 45 & 46 Dilkusha C/A, Dhaka, the Company has further informed that the Board of Directors has cancelled their earlier decision of purchasing the lands because of arising intricacy, i.e., restriction to get permission from the concerned authorities for construction of multistoried building due to enforcement of Govt. Security in the Security Zones, and also permission from Insurance Development & Regulatory Authority.

Recent Dividend Declaration

Ticker	Dividend	Record Date
Apex Foods Limited	20% C	13.09.15
Bangladesh Building Systems	20% B	20.09.15
Saiham Cotton Mills Limited	5% C & 10% B	17.09.15

Note: C= cash Dividend, B= Bonus Dividend, R=Right, N/A=NotApplicable

DSEX Technical Graph for last one year



MTB CAPITAL LIMITED

Corporate head office

Level: 3, MTB Tower, 111, Kazi Nazrul Islam Avenue, Dhaka

Phone: 8321714, Fax: 8321543

www.mtbcap.com

A mutual Trust Bank Company

you can invest with US

Disclaimer

This report has been prepared by the MTB Capital Limited (MTBCL) on the basis of available information in the market and it is provided for the purposes only. It is not to be used as an offer for buying or selling any instruments. If anyone takes any action relying on this information, shall be responsible solely by him/her self for any consequences. The best care has been taken to make the report informative. MTBCL doesn't give any warrant or guarantee that the report or such information is fully accurate. The information that are provided here is the exclusive property of MTBCL and can not be distributed without prior consent of MTBCL.