

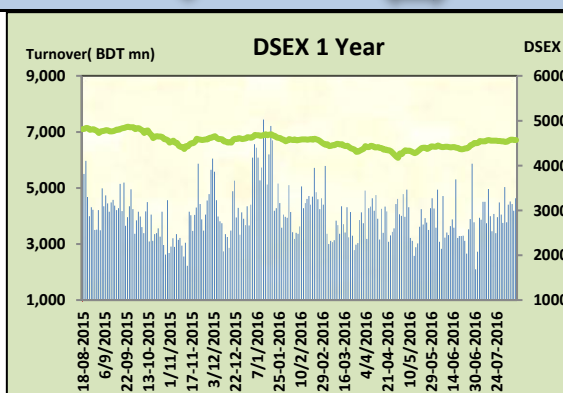
Today's Market Overview



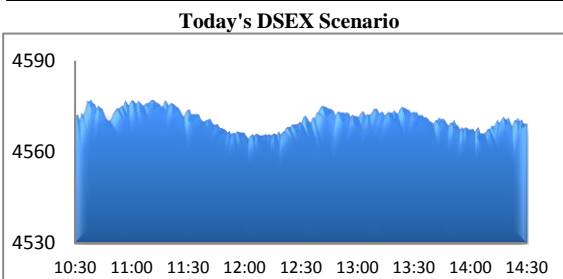
Monday, August 08, 2016

DSEX	4,569.13	0.02%	Issues Traded	↑ Advanced 142	↓ Declined 118	↔ Unchanged 64
Turnover (BDT mn)	4,632.88	10.76%				

Market somehow managed to sail in the flat zone with a slightly improved turnover. The premier bourse of the nation opened with a positive mood but soon after the midsession sellers became very active and plunged the market almost 10 points and closed the market in the flat zone. Market observed two big recovery stances during the whole session. Throughout the session sellers remained charge up to pick marginal gain and mostly small cap stocks observed severity though some major sectors also frustrated investors like Cement & Power, apart from that other major sectors performed marginally. Investors from Cement & Bank sectors were in discomfort and observed slight offloading while Engineering, Food & NBFI observed notable improved concentration. Improved buoyancy in some major sectors compelled investors to put their gained fund from small cap stocks to big cap stocks. Turnover the important indicator kept the investors clam as it crossed 4.5 billion mark and it was the highest among the last five trading sessions. Service was the best gainer followed by Engineering & textiles while Jute was the worst loser followed Cement & insurance.



The general gauge DSEX ended at 4569.13 with an advance of +0.02% which added only 0.70 points to the broad DSEX. The Turnover advanced slightly by +10.76% which was only 450 Million BDT healthier than that of previous day and finally finished the mark at 4632.88 million BDT. A total of 142 issues advanced with 118 declined & 64 remained unchanged. Sectors that improved were: Ceramics (+0.27%) Engineering (+1.13%) Food (+0.10%) IT (+0.59%) NBFI (+0.08%) Pharmaceuticals (+0.10%) Service (+1.70%) Textiles (+0.94%) Travel (+0.88%) & Sectors that declined were: Bank (-0.03%) Cement (-1.40%) Insurance (-0.84%) Jute (-2.68%) Miscellaneous (-0.23%) Paper (-0.86%) Power (-0.20%) Tannery (-0.17%) Telecom (-0.17%).



BSRMSTEEL topped in the Volume chart with a turnover of 15.31 BDT crore. SHYAMPSUG ranked top in gainer chart with a price hike of +9.9% and FARESTLIF topped in the loser chart with a decline of -8.0% from its prevailing price. BSRMSTEEL led the way in the index mover chart while LAFSURCEML played the shatter part.

Index Scenario				Market Highlights				
	INDEX	Change	% Changes	DSEX 52 week H/L	4874/3960	Market P/E (LTM)	14.84	
DSEX	4569.13	0.70	0.02%	DSEX Week H/L	4576/4525	M.Cap	3228681.3	
DSES	1121.12	(1.10)	-0.10%	Group Performances				
DS30	1785.66	(3.63)	-0.20%	Category	Mkt Cap (mn.)	Δ % M.Cap	Turnover BDT (mn)	Δ % Turnover
Turnover Scenario				Group A	2,472,405.58	-0.1%	3,918.90	7.4%
Today's Turnover (mn.)	Change In BDT (mn.)	% Change		Group B	10,682.39	0.1%	105.68	33.8%
4632.88	450	10.76%		Group N	65,345.66	-1.1%	265.67	-3.6%
				Group Z	38,397.37	0.0%	54.85	21.7%

Top Ten Volume (in BDT. crore)											
Stock	TT	YT	AT	% Δ in Turnover	TT/AT	CP	YP	% Δ P	Number of shares	Public Holding	
BSRMSTEEL	15.31	4.65	4.69	229.5%	226.6%	101.2	98.4	2.8%	274,244,180.0	9%	
TITASGAS	13.80	20.07	8.91	-31.2%	54.9%	49.7	50.9	-2.4%	362,944,698.6	5%	
CVOPRL	13.22	8.33	4.16	58.6%	217.6%	271	258.3	4.9%	15,218,280.0	19%	
DBH	13.17	7.59	11.77	73.4%	11.9%	110.6	109.4	1.1%	341,775,000.0	13%	
BSRMLTD	11.24	7.63	13.57	47.2%	-17.2%	164.5	159.8	2.9%	190,686,141.8	9%	
BSCCL	10.46	11.33	4.35	-7.6%	140.4%	111.1	115.1	-3.5%	276,739,950.1	61%	
ACMELAB	10.25	10.86	15.50	-5.6%	-33.8%	113.5	111.5	1.8%	137,132,037.0	19%	
NPOLYMAR	10.16	2.90	2.57	250.1%	295.0%	89.1	86.2	3.4%	190,417,988.2	27%	
MJLBD	9.46	12.88	12.04	-26.5%	-21.4%	107.7	108.1	-0.4%	294,400,000.0	24%	
BDTHAI	9.44	1.32	2.92	613.1%	223.7%	25.1	22.9	9.6%	54,285,000.0	38%	

TT= Today's Turnover in crore, YT= Yesterday's Turnover in Crore, AT= Average of Last 20 day's Turnover, CP= Current Price, YP= Yesterday's Price, % Δ P= percentage change in price

**Top Ten Gainer****Top Ten Loser**

Stock	CP	YP	AP	% Δ P	% Δ in P from AP	Stock	CP	YP	AP	% Δ P	% Δ in P from AP
SHYAMPSUG	13.3	12.1	8.615	9.9%	54.4%	FAREASTLIF	59.50	64.70	65.27	-8.0%	-8.8%
BDTHAI	25.1	22.9	27.09	9.6%	-7.3%	EXIM1STMF	8.20	8.90	7.48	-7.9%	9.7%
MEGHNA PET	7.3	6.7	5.32	9.0%	37.2%	RENWICKJA	743.50	801.70	486.23	-7.3%	52.9%
AMBEEPHA	377.6	347.3	319.75	8.7%	18.1%	HRTEX	25.00	26.90	23.63	-7.1%	5.8%
DSHGARME	251.6	235.5	228.89	6.8%	9.9%	MODERN DYE	145.10	155.70	156.04	-6.8%	-7.0%
ZEALBANGLA	25.1	17	12.155	47.6%	106.5%	MONNOSTAF	542.60	578.30	480.47	-6.2%	12.9%
APEXSPINN	103.8	97.6	96.045	6.4%	8.1%	RELIANCE1	7.70	8.20	8.15	-6.1%	-5.5%
EASTRNLUB	1268.7	1194.1	1203.355	6.2%	5.4%	SUNLIFEINS	16.30	17.20	23.97	-5.2%	-32.0%
ALLTEX	20.6	19.4	18.895	6.2%	9.0%	ECABLES	184.90	194.90	164.16	-5.1%	12.6%
ENVOYTEX	36.6	34.5	34.095	6.1%	7.3%	NLTUBES	111.70	117.20	97.20	-4.7%	14.9%

AP= Average Price of last 20 day,% Δ in P from AP= percentage change in price from the 20-day average price

Industry /Sectors overview (Amounts in BDT. Crore)

Sector	Trade Volume		MKT Turnover %		% Δ in Turnover	Market Capitalization		% of Total MC		% Δ in MC
	Today	Yesterday	Today	Yesterday		Today	Yesterday	Today	Yesterday	
Bank	33.82	36.78	0.08	0.09	-8.07%	41474.49	41487.41	16.05%	16.05%	-0.03%
Cement	17.12	24.70	0.04	0.06	-30.69%	14808.18	15017.68	5.73%	5.81%	-1.10%
Ceramics	3.38	2.82	0.01	0.01	19.83%	2337.74	2331.40	0.90%	0.90%	0.07%
Engineering	94.81	69.35	0.22	0.17	36.72%	15834.06	15657.05	6.13%	6.06%	1.13%
Food & Allied Product	20.34	14.96	0.05	0.04	35.96%	23963.92	23941.02	9.27%	9.26%	0.10%
Insurance	5.84	4.01	0.01	0.01	45.57%	6488.35	6543.07	2.51%	2.53%	-0.04%
IT	5.59	4.53	0.01	0.01	23.30%	893.63	888.37	0.35%	0.34%	0.09%
Jute	4.30	3.11	0.01	0.01	38.35%	116.21	119.41	0.04%	0.05%	-2.58%
Miscellaneous	31.15	36.23	0.07	0.09	-14.02%	8545.31	8565.17	3.31%	3.31%	-0.03%
Mutual Fund	7.56	4.64	0.02	0.01	63.10%	3961.64	3966.75	1.53%	1.53%	-0.13%
NBFI	26.63	19.29	0.06	0.05	38.06%	7843.43	7837.29	3.04%	3.03%	0.08%
Paper & Printing	1.07	1.19	0.00	0.00	-10.45%	160.96	162.34	0.06%	0.06%	-0.06%
Pharmaceuticals & Chemicals	54.62	53.58	0.12	0.13	1.95%	44486.10	44440.64	17.22%	17.19%	0.10%
Power & Energy	67.67	68.98	0.15	0.17	-1.89%	35355.88	35427.19	13.68%	13.71%	-0.20%
Service & Real Estate	8.53	9.38	0.02	0.02	-8.97%	1563.24	1537.06	0.60%	0.59%	1.70%
Tannery	6.77	3.61	0.02	0.01	87.41%	2302.38	2306.30	0.89%	0.89%	-0.17%
Telecommunication	10.46	20.86	0.02	0.05	-49.86%	38965.35	39031.31	15.08%	15.10%	-0.17%
Textile	37.48	28.69	0.09	0.07	30.65%	7452.14	7382.74	2.88%	2.86%	0.94%
Travel & Leisure	2.47	1.85	0.01	0.00	33.56%	1845.49	1829.37	0.71%	0.71%	0.88%

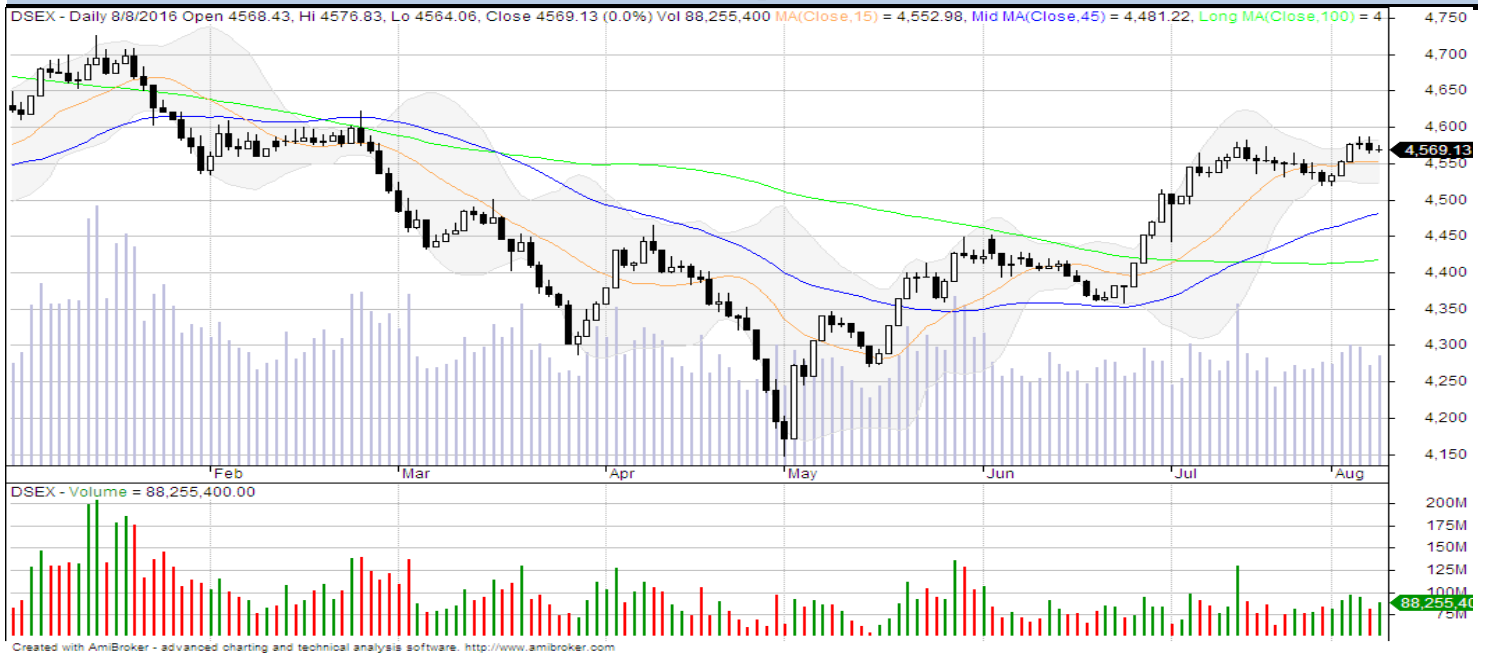
MC= Market Capitalization, % Δ in Turnover= change in turnover from last day, % Δ in MC= change in Market cap from last day

Index Movers	Index Shakers	Sector wise P/E (Fd.)			
BSRMSTEEL	LAFSURCEML	Bank	9.19	NBFI	14.01
BSRMLTD	TITASGAS	Cement	34.06	Paper & Printing	127.82
BRACBANK	BSCCL	Ceramics	38.74	Pharmaceuticals & Chemicals	26.16
UPGDCL	FAREASTLIF	Engineering	36.38	Power & Energy	17.19
UTTARABANK	RENATA	Food & Allied Product	26.87	Service & Real Estate	25.23
ENVOYTEX	SINGERBD	Insurance	10.90	Tannery	38.49
CVOPRL	PRIMEBANK	IT	40.81	Telecommunication	24.71
SQURPHARMA	ECABLES	Jute	664.64	Textile	16.39
POWERGRID	BSC	Miscellaneous	17.75	Travel & Leisure	20.28
DHAKABANK	DUTCHBANGL				

Important News**Recent Dividend Declaration****Company News:**

Ticker	Dividend	Record Date
Prime Islami Life Insurance Ltd	20% C & 5% B	8/8/2016
Grameenphone Limited	85% (interim cash)	08.08.2016
Sandhani Life Insurance Co. Limited	25% B	14.08.2016
Fareast Islami Life Insurance Co. Limited	39% C	07.08.2016

Note: C= cash Dividend, B= Bonus Dividend, R=Right, N/A=NotApplicable

DSEX Technical Graph for last one year**MTB CAPITAL LIMITED**

Corporate head office

Level: 3, MTB Tower, 111, Kazi Nazrul Islam Avenue, Dhaka

Phone: 8321714, Fax: 8321543

www.mtbcap.com*A Mutual Trust Bank Company**you can invest with us***Disclaimer**

This report has been prepared by the MTB Capital Limited (MTBCL) on the basis of available information in the market and it is provided for the purposes only. It is not to be used as an offer for buying or selling any instruments. If anyone takes any action relying on this information, shall be responsible solely by him/her self for any consequences. The best care has been taken to make the report informative. MTBCL doesn't give any warrant or guarantee that the report or such information is fully accurate. The information that are provided here is the exclusive property of MTBCL and can not be distributed without prior consent of MTBCL.