

# Today's Market Overview

Sunday, March 20, 2016

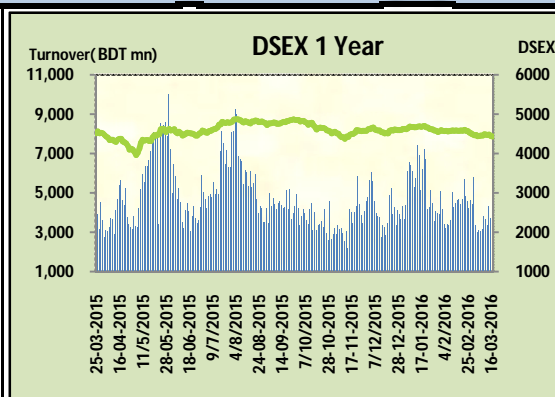


<b>DSEX</b>	4,430.28	<b>-0.36%</b>	<b>Issues Traded</b>	<b>Advanced</b>	<b>Declined</b>	<b>Unchanged</b>
<b>Turnover (BDT mn)</b>	3,406.92	<b>-8.11%</b>		99	177	43

Market continued the losing streak for the consecutive two days with a sluggish turnover. The premier bourse of the nation opened with a very negative mood and plunged almost 42 points within the first hour then market tried to recover but the sellers' domination didn't allow to get the positive mark. Most of the major sectors were loser except Telecom & Cement. Investors remain confused with their holdings while some of them were busy in choppy trading. Notable concentration occurred in Pharmaceuticals & Textiles. Participation level was very poor as most of the investors remained outside of the market as recent some issues regarding Bangladesh Bank motivated investors to take vigilant posture. Big paid up stocks couldn't perform as confidence level of investors didn't allow them to take position. Other two indices DS30 & DSES the shariah based index both failed to perform. Food was the worst loser followed by NBFI & Power. Telecom was the best gainer followed by Textiles & Cement.

The general gauge DSEX ended at 4430 with a decline of -0.4% which cut 16.01 points from the broad DSEX. The Turnover declined by -8.1% which was 301 Million BDT poorer than that of previous day and finally finished the mark at 3406.92 million BDT. A total of 99 issues advanced with 177 declined and 43 remained unchanged. Sectors that improved were: Cement (+0.3%) Engineering (+0.2%) Tannery (+0.4%) Telecom (+1.0%) Textiles (+0.6%) Miscellaneous (+0.1%). Sectors that declined were: Bank (-0.2%) Food (-2.9%) IT (-0.8%) NBFI (-1.3%) Pharmaceuticals (-0.4%) Power (-0.8%) Service (-0.7%) Insurance (-0.7%)

KEYACOSMETIC topped in the Volume chart with a turnover of 19.15 BDT crore. KEYACOSMETIC ranked top gainer chart with a price hike of +9.8% and ONEBANKLTD topped in the loser chart with a decline of -19.0% from its prevailing price. GP led the way in the index mover chart while BATBC played the shatter part.



Index Scenario				Market Highlights				
INDEX	Change	% Changes		DSEX 52 week H/L	4992/3960	Market P/E (LTM)	13.73	
DSEX	4430.28	(16.01)	-0.4%	DSEX Week H/L	4480/4430	M.Cap (mn)	3070571.7	
DSES	1078.70	(1.75)	-0.2%	Group Performances				
DS30	1688.64	(4.66)	-0.3%	Category	Mkt Cap (mn.)	Δ % M.Cap	Turnover BDT (mn)	Δ % Turnover
Turnover Scenario				Group A	2,341,931.36	-0.4%	2,801.14	-10.4%
Today's Turnover (mn.)	Change In BDT (mn.)	% Change		Group B	11,933.33	-0.4%	50.52	-34.8%
3406.92	(301)	-8.1%		Group N	36,791.76	0.0%	272.15	-15.2%
				Group Z	34,458.61	1.2%	215.28	102.1%

Top Ten Volume (in BDT. crore)										
Stock	TT	YT	AT	% Δ in Turnover	TT/AT	CP	YP	% Δ P	Number of shares	Public Holding
KEYACOSMET	19.15	7.63	3.25	151.1%	489.6%	14.6	13.3	9.8%	257,856,010.6	66%
CMCKAMAL	10.84	7.12	9.44	52.3%	14.8%	21.8	21.7	0.5%	96,811,412.6	59%
AFCAGRO	10.79	13.19	3.97	-18.2%	172.0%	75.9	74.4	2.0%	63,250,000.0	57%
ALLTEX	10.70	12.49	5.42	-14.4%	97.3%	30.8	29.7	3.7%	55,968,000.0	51%
LANKABAFIN	10.35	11.84	21.76	-12.6%	-52.4%	31.9	33.1	-3.6%	240,643,434.9	61%
AMANFEED	10.26	10.02	10.47	2.4%	-2.0%	74	71.1	4.1%	80,000,000.0	23%
ORIONINFU	9.50	9.20	3.26	3.3%	191.7%	69.4	65.8	5.5%	20,359,760.0	33%
EMERALDOIL	8.55	4.62	4.26	85.0%	100.4%	58.9	56.2	4.8%	54,285,000.0	38%
SUMITPOWER	7.98	17.76	8.12	-55.0%	-1.7%	37.5	38.4	-2.3%	714,284,847.2	15%
FUWANGCER	7.95	5.76	4.52	38.0%	76.0%	18.5	17.9	3.4%	102,380,989.5	52%

TT= Today's Turnover in crore, YT= Yesterday's Turnover in Crore, AT= Average of Last 20 day's Turnover, CP= Current Price, YP= Yesterday's Price, % Δ P= percentage change in price

Top Ten Gainer						Top Ten Loser					
Stock	CP	YP	AP	% Δ P	% Δ in P from AP	Stock	CP	YP	AP	% Δ P	% Δ in P from AP
KEYACOSMET	14.6	13.3	11.97	9.8%	22.0%	ONEBANKLTD	12.80	15.80	15.38	-19.0%	-16.7%
DACCADYE	13.8	12.6	12.845	9.5%	7.4%	KAY&QUE	17.60	19.00	19.69	-7.4%	-10.6%
SAVAREFR	43	39.6	43.335	8.6%	-0.8%	SPPCL	49.00	52.60	55.92	-6.8%	-12.4%
FUWANGFOOD	16.4	15.3	14.525	7.2%	12.9%	TAKAFULINS	15.10	16.20	16.05	-6.8%	-5.9%
ORIONINFU	69.4	65.8	57.385	5.5%	20.9%	MONNOSTAF	313.70	331.40	316.03	-5.3%	-0.7%
SAIHAMCOT	14.7	14	13.355	5.0%	10.1%	PRAGATHINS	25.00	26.20	26.69	-4.6%	-6.3%
EMERALDOIL	58.9	56.2	54.015	4.8%	9.0%	BATBC	2,419.10	2,526.50	2,726.19	-4.3%	-11.3%
DESHBANDHU	12.3	11.8	11.68	4.2%	5.3%	FAREASTLIF	71.40	74.50	76.70	-4.2%	-6.9%
AMANFEED	74	71.1	59.595	4.1%	24.2%	7THICB	112.10	116.90	110.64	-4.1%	1.3%
EBL		27.8	28.39		NM	SAMATALETF	23.50	24.50	24.90	-4.1%	-5.6%

AP= Average Price of last 20 day,% Δ in P from AP= percentage change in price from the 20-day average price

Industry /Sectors overview (Amounts in BDT. Crore)											
Sector	Trade Volume		MKT Turnover %		% Δ in Turnover	Market Capitalization		% of Total MC		% Δ in MC	
	Today	Yesterday	Today	Yesterday		Today	Yesterday	Today	Yesterday		
Bank	25.39	23.86	0.08	0.07	6.4%	37707.69	37785.79	15.58%	15.55%	-0.2%	
Cement	11.94	16.34	0.04	0.05	-27.0%	14487.06	14443.04	5.99%	5.94%	0.3%	
Ceramics	9.29	6.80	0.03	0.02	36.5%	2589.30	2630.10	1.07%	1.08%	-1.6%	
Engineering	40.43	56.97	0.12	0.16	-29.0%	15067.45	15036.63	6.22%	6.19%	0.2%	
Food & Allied Product	18.71	11.56	0.06	0.03	61.9%	21701.47	22360.28	8.97%	9.20%	-2.9%	
Insurance	6.41	8.16	0.02	0.02	-21.5%	7356.01	7406.08	3.04%	3.05%	-0.7%	
IT	4.97	6.04	0.02	0.02	-17.7%	948.58	956.17	0.39%	0.39%	-0.8%	
Jute	0.42	0.49	0.00	0.00	-15.1%	82.35	82.91	0.03%	0.03%	-0.7%	
Miscellaneous	25.29	24.80	0.08	0.07	2.0%	8410.95	8401.63	3.47%	3.46%	0.1%	
Mutual Fund	1.69	2.21	0.01	0.01	-23.4%	3612.17	3636.40	1.49%	1.50%	-0.7%	
NBFI	16.12	19.83	0.05	0.06	-18.7%	7931.98	8038.60	3.28%	3.31%	-1.3%	
Paper & Printing	0.53	0.40	0.00	0.00	31.3%	183.66	186.07	0.08%	0.08%	-1.3%	
Pharmaceuticals & Chemicals	66.68	59.08	0.20	0.16	12.9%	40986.57	41152.40	16.93%	16.93%	-0.4%	
Power & Energy	37.90	63.99	0.11	0.18	-40.8%	32644.03	32923.50	13.49%	13.55%	-0.8%	
Service & Real Estate	4.18	3.83	0.01	0.01	9.2%	1730.16	1742.09	0.71%	0.72%	-0.7%	
Tannery	0.46	0.56	0.00	0.00	-17.7%	2228.95	2220.21	0.92%	0.91%	0.4%	
Telecommunication	4.38	6.59	0.01	0.02	-33.6%	34375.88	34034.39	14.20%	14.00%	1.0%	
Textile	52.41	42.94	0.16	0.12	22.1%	8026.50	7981.88	3.32%	3.28%	0.6%	
Travel & Leisure	3.15	3.95	0.01	0.01	-20.2%	1983.84	2007.81	0.82%	0.83%	-1.2%	

MC= Market Capitalization, % Δ in Turnover= change in turnover from last day, % Δ in MC= change in Market cap from last day

Index Movers	Index Shakers	Sector wise P/E (Fd.)			
GP	BATBC	Bank	8.44	NBFI	41.84
LAFSURCEML	ONEBANKLTD	Cement	30.98	Paper & Printing	97.67
BSRMLTD	GLAXOSMITH	Ceramics	34.25	Pharmaceuticals & Chemicals	26.75
EBL	ISLAMIBANK	Engineering	55.69	Power & Energy	15.65
DUTCHBANGL	SUMITPOWER	Food & Allied Product	27.92	Service & Real Estate	30.66
BRACBANK	MARICO	Insurance	12.98	Tannery	53.56
BSRMSTEEL	SPPCL	IT	92.22	Telecommunication	26.71
POWERGRID	UPGDCL	Jute	150.17	Textile	17.55
TITASGAS	KPCL	Miscellaneous	34.02	Travel & Leisure	20.93
BANKASIA	RAKCERAMIC				

## Important News

### Company News:

**TAKAFULINS:** Dividend Declaration: The Board of Directors has recommended 5% cash and 5% stock dividend for the year ended on December 31, 2015. Date of AGM: 30.04.2016, Time: 11:00 AM, Venue: Institution of Diploma Engineers Bangladesh, MuktiJuddho Srmiti Milonayaton (1st Floor), 160/A, Kakrail, VIP Road, Dhaka-1000. Record Date: 06.04.2016. The Company has also reported EPS of Tk. 1.55, NAV per share of Tk. 16.35 and NOCFPS of Tk. 1.65 for the year ended on December 31, 2015.

**UTTARABANK:** Dividend Declaration: The Board of Directors has recommended 20% cash dividend for the year ended on December 31, 2015. Date of AGM: 24.04.2016, Time: 11:00 AM, Venue: International Convention City, Bashundhara, Rajdarshan (Hall-3) and ground floor of the Seminar Hall (Hall-5), Joarshara, Khilkhet, Dhaka-1229, Record Date: 07.04.2016. The Company has also reported Consolidated profit after Provision and tax of Tk. 1,511.98 million, Consolidated EPS of Tk. 3.78

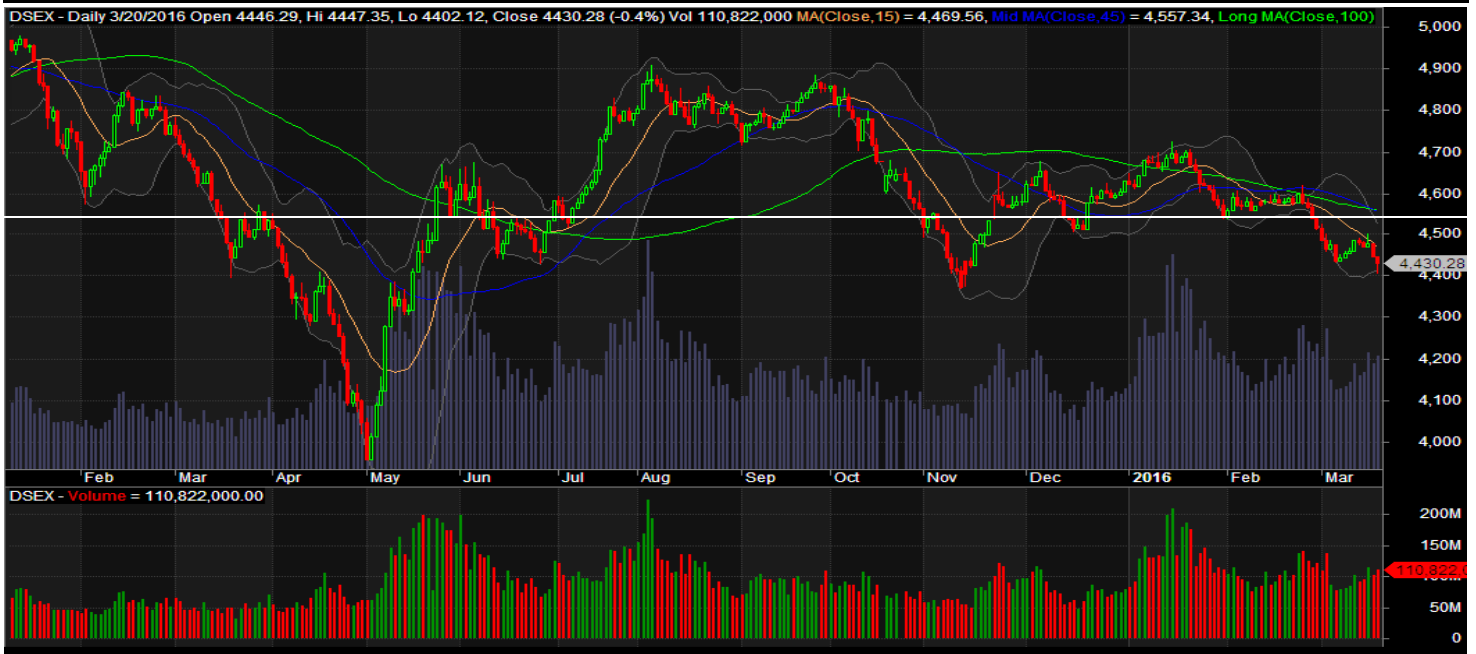
**KEYACOSMET:** Q1 Financials: (Q1 Un-audited): EPS for July-September, 2015 was Tk. 0.61 as against Tk. 0.59 for July-September, 2014; NOCFPS was Tk. (0.39) for July-September, 2015 as against Tk. 0.50 for July-September, 2014. NAV per share was Tk. 17.29 as of September 30, 2015 and Tk. 16.67 as of June 30, 2015.

## Recent Dividend Declaration

Ticker	Dividend	Record Date
Phoenix Finance and Investments Ltd.	20% C	31.03.16
Summit Alliance Port Ltd.	10% B	21.03.16

Note: C= cash Dividend, B= Bonus Dividend, R=Right, N/A=NotApplicable

## DSEX Technical Graph for last one year



### MTB CAPITAL LIMITED

Corporate head office

Level: 3, MTB Tower, 111, Kazi Nazrul Islam Avenue, Dhaka

Phone: 8321714, Fax: 8321543

[www.mtbcap.com](http://www.mtbcap.com)

*A Mutual Trust Bank Company*

*you can invest with us*

## Disclaimer

This report has been prepared by the MTB Capital Limited (MTBCL) on the basis of available information in the market and it is provided for the purposes only. It is not to be used as an offer for buying or selling any instruments. If anyone takes any action relying on this information, shall be responsible solely by him/her self for any consequences. The best care has been taken to make the report informative. MTBCL doesn't give any warrant or guarantee that the report or such information is fully accurate. The information that are provided here is the exclusive property of MTBCL and can not be distributed without prior consent of MTBCL.