

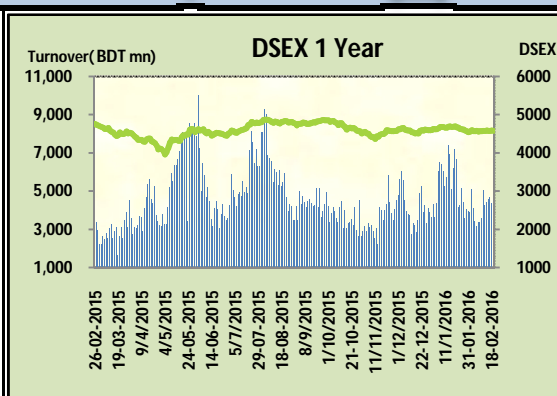
Today's Market Overview

Monday, February 22, 2016



DSEX	4,577.62	-0.22%	Issues Traded	↑ Advanced 95	↓ Declined 181	↔ Unchanged 42
Turnover (BDT mn)	4,686.87	6.3%				

Three days' of gaining streak defeated today with a slightly improved turnover. The premier bourse of the nation opened with a negative mood and continued the same mood till the closure. Market tried keep the momentum as it tried to test the 4600 mark during the first session but soon after the midsession sellers started to dominate the market. Moreover most of the buyers were in fear as two big mutual funds were in process of liquidation within a very short time, actually this issue disallowed potential buyers from the participation. Though turnover crossed 4.5 billion mark but big paid up stocks suffered from prospective buyers. Investors from NBF sector were in severe mood and most of them were busy in offloading. Other big cap stocks performed marginally poor except Cement & Telecom. Most of the concentration occurred in Miscellaneous and Engineering. Other two indices DS30 & DSES the shariah based index somehow gained marginally positive mark. NBF was the worst loser followed by Service & Bank while cement was the best gainer followed by telecom & IT. The general gauge DSEX ended at 4577.62 with a decline of -0.2% which cut only 10.05 points from the broad DSEX. The Turnover advanced slightly by +6.3% which was 279 Million BDT healthier than that of previous day and finally finished the mark at 4686.87 million BDT. A total of 95 issues advanced with 181 declined and 42 remained unchanged. Sectors that improved were: Cement (+3.3%) Food (+0.8%) IT (+1.3%) Telecom (+1.3%) & Sectors that declined were: Bank (-0.8%) Insurance (-1.0%) NBF (-4.1%) Pharmaceuticals (-0.2%) Power (-0.2%) Textiles (-0.3%) Service (-1.6%) BSRMLTD topped in the Volume chart with a turnover of 38.75 BDT crore. TALLUSPIN ranked top gainer chart with a price hike of +10.0% and PRIMEFIN topped in the loser chart with a decline of -20.6% from its prevailing price. LAFSURCEML led the way in the index mover chart while UPGDCL played the shatter part.



Index Scenario				Market Highlights				
INDEX	Change	% Changes		DSEX 52 week H/L	4992/3960	Market P/E (LTM)	14.80	
DSEX	4577.62	(10.05)	-0.2%	DSEX Week H/L	4588/4578	M.Cap (mn)	3185111.6	
DSES	1128.61	3.20	0.3%	Group Performances				
DS30	1773.68	7.46	0.4%	Category	Mkt Cap (mn.)	Δ % M.Cap	Turnover BDT (mn)	Δ % Turnover
Turnover Scenario				Group A	2,464,959.05	0.0%	3,781.85	-1.0%
Today's Turnover (mn.)	Change In BDT (mn.)	% Change		Group B	11,886.03	-1.1%	78.94	47.4%
4686.87	279	6.3%		Group N	36,621.13	1.8%	554.46	38.1%
				Group Z	34,120.14	-2.2%	83.87	39.0%

Top Ten Volume (in BDT. crore)										
Stock	TT	YT	AT	% Δ in Turnover	TT/AT	CP	YP	% Δ P	Number of shares	Public Holding
BSRMLTD	38.75	20.71	13.70	87.1%	182.7%	177.3	176.5	0.5%	173,351,038.0	9%
LAFSURCEML	29.51	25.76	6.89	14.6%	328.3%	84.8	79.3	6.9%	1,161,373,500.0	30%
IFADAUTOS	28.72	16.12	9.08	78.2%	216.3%	101.1	97.5	3.7%	149,500,000.0	17%
UPGDCL	18.78	25.28	12.63	-25.7%	48.8%	164.4	168.3	-2.3%	362,944,698.6	5%
BXPHARMA	13.90	16.83	15.34	-17.4%	-9.4%	91.8	93.1	-1.4%	386,244,234.6	50%
AMANFEED	13.18	8.61	4.90	53.1%	168.9%	56.8	53.4	6.4%	80,000,000.0	23%
SINOBANGLA	9.53	6.96	2.24	37.0%	325.4%	37.7	34.3	9.9%	19,996,600.0	63%
SQURPHARMA	9.14	8.37	12.04	9.1%	-24.1%	268.7	269.2	-0.2%	623,586,546.0	9%
TITASGAS	8.96	1.89	3.25	374.7%	175.4%	46	44.5	3.4%	989,221,831.0	25%
IDLC	8.52	6.98	2.76	21.9%	209.0%	58	61	-4.9%	251,367,187.5	22%

TT= Today's Turnover in crore, YT= Yesterday's Turnover in Crore, AT= Average of Last 20 day's Turnover, CP= Current Price, YP= Yesterday's Price, % Δ P= percentage change in price

Top Ten Gainer						Top Ten Loser					
Stock	CP	YP	AP	% Δ P	% Δ in P from AP	Stock	CP	YP	AP	% Δ P	% Δ in P from AP
TALLUSPIN	24.2	22	23.185	10.0%	4.4%	PRIMEFIN	8.10	10.20	11.14	-20.6%	-27.3%
SINOBANGLA	37.7	34.3	31.13	9.9%	21.1%	ISNLTD	14.70	15.80	15.33	-7.0%	-4.1%
MIRACLEIND	31.3	28.9	31.435	8.3%	-0.4%	PARAMOUNT	12.40	13.30	13.28	-6.8%	-6.6%
SONARGAON	10.9	10.1	10.115	7.9%	7.8%	ILFSL	8.70	9.30	9.69	-6.5%	-10.2%
INTECH	13.8	12.8	13.365	7.8%	3.3%	DBH	111.70	118.30	131.17	-5.6%	-14.8%
DAFODILCOM	22.9	21.4	22.695	7.0%	0.9%	IPDC	26.30	27.70	29.06	-5.1%	-9.5%
LAFSURCEML	84.8	79.3	73.745	6.9%	15.0%	FAREASTFIN	9.50	10.00	10.20	-5.0%	-6.9%
BARKAPOWER	31.4	29.5	29.635	6.4%	6.0%	IDLC	58.00	61.00	60.91	-4.9%	-4.8%
AMANFEED	56.8	53.4	46.77	6.4%	21.4%	SAMATALETF	25.20	26.50	25.82	-4.9%	-2.4%
GPHISPAT	52.1	49.1	46.015	6.1%	13.2%	SANDHANINS	37.40	39.10	38.10	-4.3%	-1.8%

AP= Average Price of last 20 day,% Δ in P from AP= percentage change in price from the 20-day average price

Industry /Sectors overview (Amounts in BDT. Crore)											
Sector	Trade Volume		MKT Turnover %		% Δ in Turnover	Market Capitalization		% of Total MC		% Δ in MC	
	Today	Yesterday	Today	Yesterday		Today	Yesterday	Today	Yesterday		
Bank	21.10	21.05	0.05	0.05	0.2%	38826.28	39151.39	15.26%	15.40%	-0.8%	
Cement	38.40	41.43	0.09	0.10	-7.3%	16061.01	15550.13	6.31%	6.12%	3.3%	
Ceramics	11.64	11.76	0.03	0.03	-1.0%	2853.77	2856.97	1.12%	1.12%	-0.1%	
Engineering	110.93	86.59	0.25	0.20	28.1%	16351.09	16349.86	6.43%	6.43%	0.0%	
Food & Allied Product	14.00	19.41	0.03	0.05	-27.9%	25199.53	25002.00	9.91%	9.83%	0.8%	
Insurance	8.68	12.75	0.02	0.03	-31.9%	7417.59	7493.41	2.92%	2.95%	-1.0%	
IT	9.01	5.78	0.02	0.01	55.7%	976.48	964.13	0.38%	0.38%	1.3%	
Jute	0.44	0.45	0.00	0.00	-2.5%	80.62	81.40	0.03%	0.03%	-1.0%	
Miscellaneous	34.49	26.50	0.08	0.06	30.1%	8358.46	8358.98	3.29%	3.29%	0.0%	
Mutual Fund	3.41	8.73	0.01	0.02	-60.9%	3657.74	3676.27	1.44%	1.45%	-0.5%	
NBFI	25.44	20.52	0.06	0.05	23.9%	8106.66	8452.67	3.19%	3.32%	-4.1%	
Paper & Printing	0.41	0.99	0.00	0.00	-58.5%	185.09	185.66	0.07%	0.07%	-0.3%	
Pharmaceuticals & Chemicals	40.25	50.08	0.09	0.12	-19.6%	42044.19	42202.18	16.53%	16.60%	-0.4%	
Power & Energy	66.56	68.39	0.15	0.16	-2.7%	33502.96	33575.70	13.17%	13.20%	-0.2%	
Service & Real Estate	5.56	7.36	0.01	0.02	-24.5%	1774.26	1802.92	0.70%	0.71%	-1.6%	
Tannery	1.93	0.98	0.00	0.00	96.4%	2329.06	2354.09	0.92%	0.93%	-1.1%	
Telecommunication	7.05	6.41	0.02	0.02	10.0%	36619.65	36160.24	14.40%	14.22%	1.3%	
Textile	37.45	32.98	0.09	0.08	13.5%	8005.14	8031.30	3.15%	3.16%	-0.3%	
Travel & Leisure	3.60	2.56	0.01	0.01	40.7%	2021.89	2037.59	0.79%	0.80%	-0.8%	

MC= Market Capitalization, % Δ in Turnover= change in turnover from last day, % Δ in MC= change in Market cap from last day

Index Movers	Index Shakers	Sector wise P/E (Fd.)			
LAFSURCEML	UPGDCL	Bank	8.90	NBFI	40.08
GP	HEIDELBCEM	Cement	35.24	Paper & Printing	96.25
TITASGAS	ISLAMIBANK	Ceramics	36.75	Pharmaceuticals & Chemicals	28.32
OLYMPIC	DBH	Engineering	57.92	Power & Energy	16.44
BATBC	IDLC	Food & Allied Product	31.93	Service & Real Estate	31.74
IFADAUTOS	BXPHERMA	Insurance	13.78	Tannery	53.72
GPHISPAT	LINDEBD	IT	94.99	Telecommunication	26.91
BARKAPOWER	SQURPHARMA	Jute	165.11	Textile	17.54
AMANFEED	UCB	Miscellaneous	36.11	Travel & Leisure	22.53
PREMIERCEM	ABBANK				

Important News

Company News:

IDLC: Dividend Declaration and Increase of Authorized Capital: The Board of Directors has recommended 25% cash dividend for the year ended on December 31, 2015. The Board has also decided to enhance its Authorized Capital to Tk. 1,000.00 crore from existing Tk. 400.00 crore by changing relevant clauses of the Memorandum and Articles of Association of the Company, subject to the approval of the Regulatory Authorities and the Shareholders in the AGM. Date of AGM: 30.03.2016, Time: 10:00 AM. (cont.1)

(Continuation news of IDLC): Venue: Utshab, Radisson BLU Dhaka Water Garden Hotel, Airport Road, Dhaka Cantonment, Dhaka-1206. Record Date: 13.03.2016. The Company has also reported Consolidated Net Profit of Tk. 1,459.22 million, consolidated EPS of Tk. 5.81, Consolidated NAV per share of Tk. 30.97 and Consolidated NOCFPS of Tk. 20.61 for the year ended on December 31, 2015 as against Tk. 1,245.51 million, Tk. 4.95, Tk. 25.97 and Tk. (1.69) respectively for the year ended on December 31, 2014. (end)

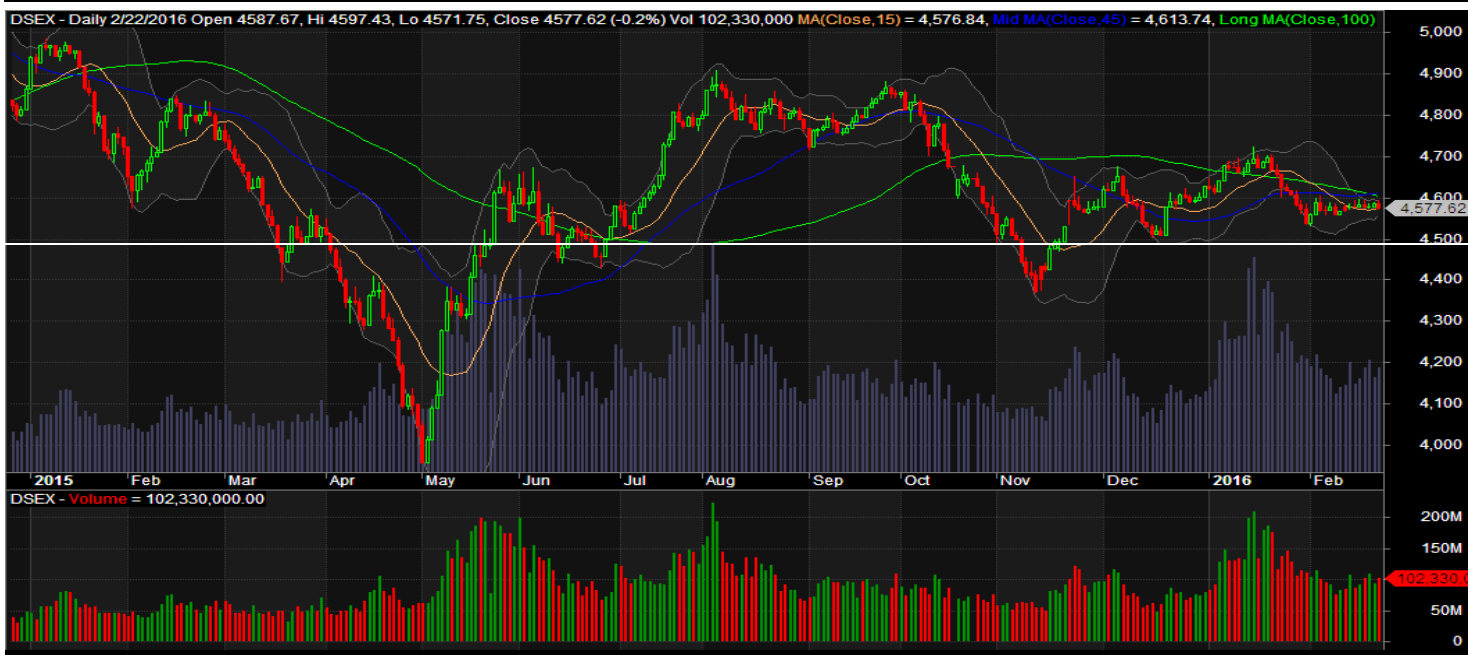
ZAHEENSPIN: Revaluation of Land and Land Development owned by the Company: The Company has informed that the Board of Directors has decided to revalue its land and land development to determine the present market value of all land and land development owned by the Company by a qualified valuation firm.

Recent Dividend Declaration

Ticker	Dividend	Record Date
Marico	100%C	15.02.2016

Note: C= cash Dividend, B= Bonus Dividend, R=Right, N/A=NotApplicable

DSEX Technical Graph for last one year



MTB CAPITAL LIMITED

Corporate head office

Level: 3, MTB Tower, 111, Kazi Nazrul Islam Avenue, Dhaka

Phone: 8321714, Fax: 8321543

www.mtbcap.com

A Mutual Trust Bank Company

you can invest with us

Disclaimer

This report has been prepared by the MTB Capital Limited (MTBCL) on the basis of available information in the market and it is provided for the purposes only. It is not to be used as an offer for buying or selling any instruments. If anyone takes any action relying on this information, shall be responsible solely by him/her self for any consequences. The best care has been taken to make the report informative. MTBCL doesn't give any warrant or guarantee that the report or such information is fully accurate. The information that are provided here is the exclusive property of MTBCL and can not be distributed without prior consent of MTBCL.