

# Today's Market Overview

Tuesday, October 13, 2015

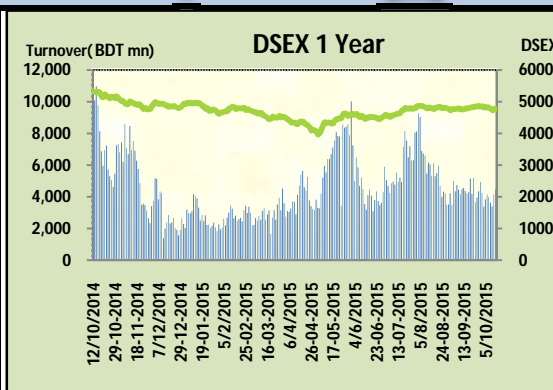


<b>DSEX</b>	4,779.66	0.07%	<b>Issues Traded</b>	↑ <b>Advanced</b> 133	↓ <b>Declined</b> 140	↔ <b>Unchanged</b> 42
<b>Turnover (BDT mn)</b>	4,495.00	7.9%				

Market ended with a flat gain and an improved turnover. Market opened with flying start like the previous day but the speed stooped downward gradually as the time progressed but remained in the green zone. Soon after touching 4800 index mark investors went on selling bender and the same attitude continued till the closure. Banking sectors tried to keep the momentum but the velocity decreased as small investors went for picking marginal gain. Most of the major sectors couldn't perform while small cap sectors performed superbly. Both DS30 & DSES the shariah based index both performed poor. Jute was the best gainer followed by Food, Paper & textiles. Telecom was the worst loser.

The general gauge DSEX ended at 4779.66 with an advance of +0.1% which added 3.51 points to the broad DSEX. The Turnover advanced slightly by 7.9% which was only 330 Million BDT healthier than that of previous day and finally finished the mark at 4495.00 million BDT. A total of 133 issues advanced with 140 declined and 42 remained unchanged. Sectors that improved were: Bank (+0.6%) Textile (+1.2%) Food (+1.5%) Paper (+1.7%) Jute (+1.8%) Power (+0.2%) NBF (0.3%) & sectors that declined were: Cement (-1.2%) Ceramics (-0.7%) Engineering (-0.1%) Travel (-0.9%) Telecom (-2.2%) Service (-0.7%) Pharmaceuticals (-0.7%) Miscellaneous (-0.3%)

BXPHERMA topped in the Volume chart with a turnover of 43.60 BDT crore. ALLTEX ranked top gainer chart with a price hike of +9.9% and FARCHEM topped in the loser chart with a decline of -5.8% from its prevailing price. BATBC led the way in the index mover chart while GP played the shatter part.



Index Scenario				Market Highlights				
<b>INDEX</b>	<b>Change</b>	<b>% Changes</b>		<b>DSEX 52 week H/L</b>	5334/3960	<b>Market P/E (LTM)</b>	15.48	
DSEX	4779.66	3.51	0.1%	<b>DSEX Week H/L</b>	4833/4728	<b>M.Cap (mn)</b>	3280752.9	
DSES	1141.83	(2.35)	-0.2%	<b>Group Performances</b>				
DS30	1812.88	(0.71)	0.0%	<b>Category</b>	<b>Mkt Cap (mn.)</b>	<b>Δ % M.Cap</b>	<b>Turnover BDT (mn)</b>	<b>Δ % Turnover</b>
<b>Turnover Scenario</b>				Group A	2,552,553.76	-0.2%	4,069.08	7.8%
Today's Turnover (mn.)	Change In BDT (mn.)	% Change		Group B	14,133.75	0.4%	83.47	-10.6%
4495.00	330	7.9%		Group N	27,798.40	-0.2%	114.50	1.5%
				Group Z	24,826.58	0.6%	29.21	25.1%

Top Ten Volume (in BDT. crore)										
Stock	TT	YT	AT	% Δ in Turnover	TT/AT	CP	YP	% Δ P	Number of shares	Public Holding
BXPHERMA	43.60	16.76	17.00	160.1%	156.5%	76.5	73.8	3.7%	386,244,234.6	50%
MHSMML	15.89	17.13	5.54	-7.2%	186.8%	41.5	42.5	-2.4%	78,093,750.0	40%
BRACBANK	15.65	15.55	5.09	0.6%	207.2%	50.4	50.3	0.2%	709,287,321.0	46%
LAFSURCEML	15.52	15.91	11.54	-2.5%	34.5%	98.3	100	-1.7%	1,161,373,500.0	30%
SQURPHARMA	14.55	7.27	10.07	100.1%	44.5%	241	243.4	-1.0%	623,586,546.0	9%
BSRMSTEEL	11.59	7.79	9.79	48.9%	18.5%	93	93	0.0%	341,775,000.0	13%
UCBL	11.21	17.83	4.72	-37.1%	137.5%	22.8	22.7	0.4%	1,003,933,957.2	58%
PREMIERCEM	10.52	11.70	3.54	-10.1%	197.1%	101.2	98.5	2.7%	105,450,000.0	10%
EMERALDOIL	9.07	3.40	3.97	166.5%	128.1%	51.7	50.4	2.6%	49,350,000.0	38%
CITYBANK	8.95	10.23	4.09	-12.5%	118.9%	21.1	20.8	1.4%	875,798,031.2	59%

TT= Today's Turnover in crore, YT= Yesterday's Turnover in Crore, AT= Average of Last 20 day's Turnover, CP= Current Price, YP= Yesterday's Price, % Δ P= percentage change in price

Top Ten Gainer						Top Ten Loser					
Stock	CP	YP	AP	% Δ P	% Δ in P from AP	Stock	CP	YP	AP	% Δ P	% Δ in P from AP
ALLTEX	18.9	17.2	19.715	9.9%	-4.1%	FARCHEM	37.30	39.60	47.09	-5.8%	-20.8%
AZIZPIPES	32.4	29.8	25.42	8.7%	27.5%	SONARGAON	8.80	9.30	9.51	-5.4%	-7.5%
ANWARGALV	73.7	68	66.345	8.4%	11.1%	PROGRESLIF	60.40	63.20	62.59	-4.4%	-3.5%
ZEALBANGLA	6.8	6.3	7.35	7.9%	-7.5%	EBLNRBMF	4.60	4.80	4.48	-4.2%	2.8%
ZAHINTEX	25.4	23.8	22.66	6.7%	12.1%	POPULAR1MF	4.70	4.90	4.50	-4.1%	4.4%
DBH	99.3	94.4	96.16	5.2%	3.3%	ICBAMCL2ND	4.80	5.00	4.58	-4.0%	4.9%
CNATEX	14.9	14.2	16.855	4.9%	-11.6%	TRUSTB1MF	4.90	5.10	4.67	-3.9%	4.9%
RNSPIN	21.5	20.5	21.835	4.9%	-1.5%	PRAGATILIF	116.30	120.90	113.79	-3.8%	2.2%
STYLECRAFT	1000	953.7	998.65	4.9%	0.1%	RAHIMAF00I	50.30	52.00	50.16	-3.3%	0.3%
GEMINISEA	384.2	369	394.525	4.1%	-2.6%	LRGLOBMF1	6.10	6.30	5.52	-3.2%	10.5%

AP= Average Price of last 20 day,% Δ in P from AP= percentage change in price from the 20-day average price

Industry /Sectors overview (Amounts in BDT. Crore)											
Sector	Trade Volume		MKT Turnover %		% Δ in Turnover	Market Capitalization		% of Total MC		% Δ in MC	
	Today	Yesterday	Today	Yesterday		Today	Yesterday	Today	Yesterday		
Bank	80.09	104.87	0.19	0.26	-23.6%	42971.58	42729.32	16.43%	16.30%	0.6%	
Cement	28.72	31.00	0.07	0.08	-7.4%	17987.49	18197.55	6.88%	6.94%	-1.2%	
Ceramics	6.69	4.40	0.02	0.01	51.8%	2747.31	2768.05	1.05%	1.06%	-0.7%	
Engineering	47.57	45.08	0.11	0.11	5.5%	14740.52	14820.89	5.63%	5.65%	-0.5%	
Food & Allied Product	19.66	20.39	0.05	0.05	-3.6%	24378.52	24009.90	9.32%	9.16%	1.5%	
Insurance	4.77	7.11	0.01	0.02	-32.9%	7142.25	7139.65	2.73%	2.72%	0.0%	
IT	1.69	1.73	0.00	0.00	-2.6%	531.70	536.34	0.20%	0.20%	-0.9%	
Jute	1.22	0.62	0.00	0.00	95.9%	100.65	98.82	0.04%	0.04%	1.8%	
Miscellaneous	15.21	14.77	0.04	0.04	3.0%	8615.35	8644.85	3.29%	3.30%	-0.3%	
Mutual Fund	11.31	11.58	0.03	0.03	-2.3%	3628.87	3659.86	1.39%	1.40%	-0.8%	
NBFI	15.84	14.92	0.04	0.04	6.2%	8350.55	8323.51	3.19%	3.18%	0.3%	
Paper & Printing	1.16	0.76	0.00	0.00	53.4%	212.01	208.55	0.08%	0.08%	1.7%	
Pharmaceuticals & Chemicals	84.39	43.85	0.20	0.11	92.4%	40657.30	40789.70	15.54%	15.56%	-0.3%	
Power & Energy	36.02	31.71	0.08	0.08	13.6%	37839.81	37746.06	14.46%	14.40%	0.2%	
Service & Real Estate	9.55	13.85	0.02	0.03	-31.0%	2065.86	2079.96	0.79%	0.79%	-0.7%	
Tannery	4.54	4.57	0.01	0.01	-0.6%	2496.77	2513.64	0.95%	0.96%	-0.7%	
Telecommunication	12.41	8.74	0.03	0.02	42.1%	36725.33	37532.53	14.04%	14.32%	-2.2%	
Textile	40.94	36.31	0.10	0.09	12.8%	8201.25	8106.77	3.13%	3.09%	1.2%	
Travel & Leisure	6.62	5.59	0.02	0.01	18.5%	2217.65	2237.94	0.85%	0.85%	-0.9%	

MC= Market Capitalization, % Δ in Turnover= change in turnover from last day, % Δ in MC= change in Market cap from last day

Index Movers	Index Shakers	Sector wise P/E			
BATBC	GP	Bank	9.44	NBFI	32.45
BXPHERMA	LAFSURCEML	Cement	34.58	Paper & Printing	73.69
TITASGAS	SQURPHARMA	Ceramics	38.77	Pharmaceuticals & Chemicals	26.76
ISLAMIBANK	BSRMLTD	Engineering	36.25	Power & Energy	16.03
LINDEBD	RENATA	Food & Allied Product	35.45	Service & Real Estate	42.68
DBH	BERGERPBL	Insurance	14.57	Tannery	34.05
EBL	SPCL	IT	17.16	Telecommunication	23.84
BSCCL	HEIDELBCEM	Jute	166.28	Textile	16.92
PREMIERCEM	RUPALIBANK	Miscellaneous	34.84	Travel & Leisure	14.42
BEXIMCO	UPGDCL				

## Important News

### Company News:

**RSRMSTEEL:** Board Meeting schedule under LR 19(1): As per Regulation 19(1) of the Dhaka Stock Exchange (Listing) Regulations, 2015, the Company has informed that a meeting of the Board of Directors will be held on October 25, 2015 at 4:00 PM to consider, among others, audited financial statements of the Company for the year ended on June 30, 2015.

**LINDEBD:** Board Meeting schedule under LR 16(1): As per Regulation 16(1) of the Dhaka Stock Exchange (Listing) Regulations, 2015, the Company has informed that a meeting of the Board of Directors will be held on October 15, 2015 at 3:30 PM to consider, among others, un-audited financial statements of the Company for the Third Quarter (Q3) period ended on September 30, 2015.

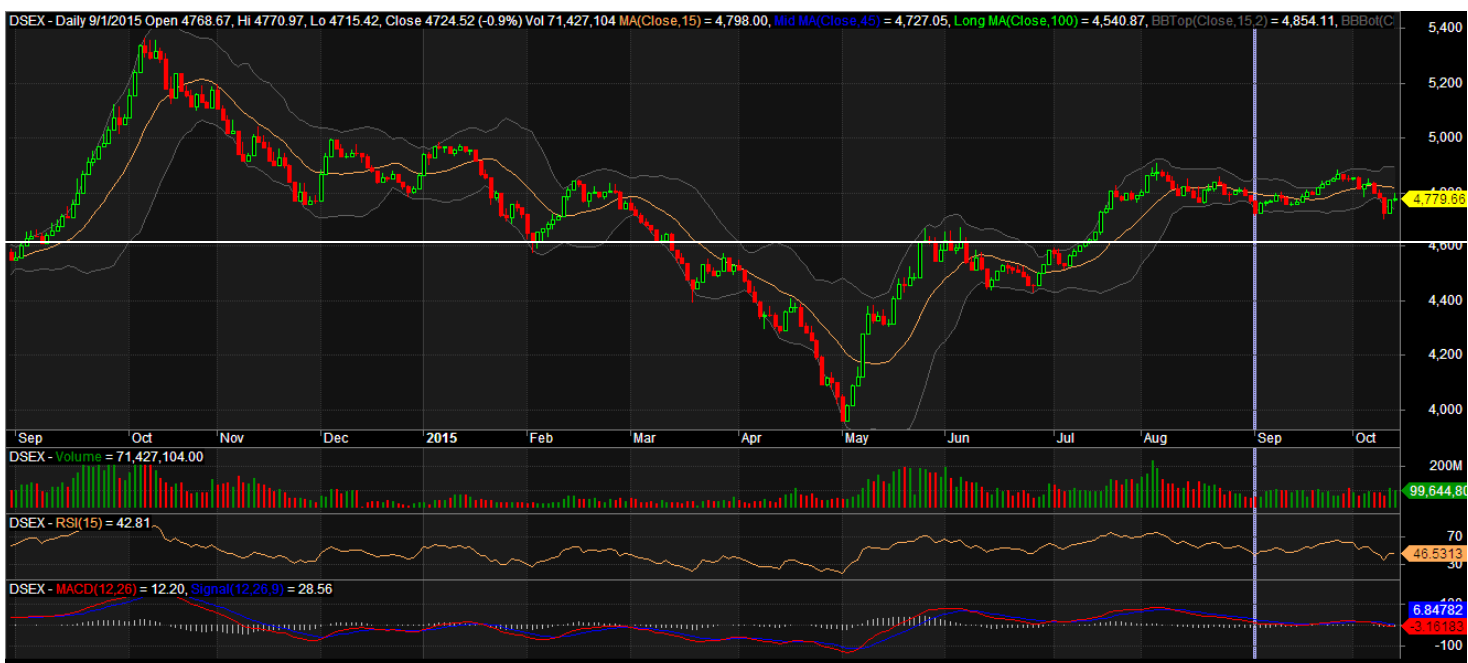
**MARICO:** Board Meeting schedule under LR 16 (1): As per Regulation 16 (1) of the Dhaka Stock Exchange (Listing) Regulations, 2015, the Company has informed that a meeting of the Board of Directors will be held on October 17, 2015 at 12:00 PM to consider, among others, the audited financial statements of the Company for the Second Quarter (Q2) period ended on September 30, 2015.

## Recent Dividend Declaration

Ticker	Dividend	Record Date
Beach Hatchery Ltd.	5% B	28.10.15
Premier Cement Mills Limited	20% C	18.10.15
SAIF Powertec Limited	29% B	15.10.15
Appollo Ispat Complex Limited	3% C & 12% B	14.10.15

Note: C= cash Dividend, B= Bonus Dividend, R=Right, N/A=NotApplicable

## DSEX Technical Graph for last one year



### MTB CAPITAL LIMITED

Corporate head office

Level: 3, MTB Tower, 111, Kazi Nazrul Islam Avenue, Dhaka

Phone: 8321714, Fax: 8321543

[www.mtbcap.com](http://www.mtbcap.com)

*A mutual Trust Bank Company*

*you can invest with US*

### Disclaimer

This report has been prepared by the MTB Capital Limited (MTBCL) on the basis of available information in the market and it is provided for the purposes only. It is not to be used as an offer for buying or selling any instruments. If anyone takes any action relying on this information, shall be responsible solely by him/her self for any consequences. The best care has been taken to make the report informative. MTBCL doesn't give any warrant or guarantee that the report or such information is fully accurate. The information that are provided here is the exclusive property of MTBCL and can not be distributed without prior consent of MTBCL.