

Today's Market Overview

Wednesday, December 30, 2015

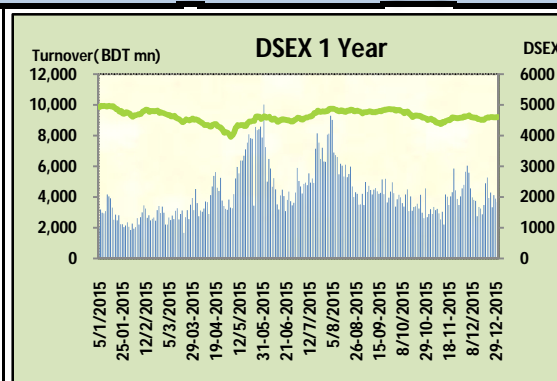


DSEX	4,604.92	0.18%	Issues Traded	↑ Advanced 147	↓ Declined 122	↔ Unchanged 47
Turnover (BDT mn)	3,673.17	-5.87%				

Market continued the marginal gaining streak with a sluggish turnover as most of the investors were reluctant to the participation amidst the nationwide local election as well as year ending just knocking on the door. The premier bourse of the nation opened with a positive mood and continued the same mood till the closure but observed a glitch during the mid session. Positive performance of some of the sectors like pharmaceuticals, NBFI & Textiles created optimism to investors mind but Pharmaceuticals failed to keep the momentum. Most of the major sectors tried to hold the existing price level as year close pricing seemed to be important to some institutional investors. Among the other two indices DSES the shariah based index tried to put gain while DS30 was slightly poor. Cement was the best gainer followed by Food & Bank while Service, Travel & ceramics failed to perform.

The general gauge DSEX ended at 4604.92 with an advance of +0.18% which added 8.10 points to the broad DSEX. The Turnover declined slightly by -5.9% which was 229 Million BDT poorer than that of previous day and finally finished the mark at 3673.17 million BDT. A total of 147 issues advanced with 122 declined and 47 remained unchanged. Sectors that improved were: Bank (+0.4%) Cement (+1.1%) Engineering (+0.4%) Food (+0.8%) NBFI (+0.2%) Power (+0.3%) Textiles (+0.5%) Tannery (+0.3%) & sectors that declined were: Ceramics (-0.1%) Pharmaceuticals (-0.1%) Service (-0.3%) Travel (-0.9%) Miscellaneous (-0.4%) IT (-0.5%)

SINGERBD topped in the Volume chart with a turnover of 13.30 BDT crore. PRIMETEX ranked top gainer chart with a price hike of +7.9% and SAMATALETH topped in the loser chart with a decline of 5.7% from its prevailing price. LAFSURCEML led the way in the index mover chart while SUMITPOWER played the shatter part.



Index Scenario				Market Highlights				
	INDEX	Change	% Changes	DSEX 52 week H/L	4992/3960	Market P/E (LTM)	14.78	
	DSEX	4604.92	8.10	0.2%	DSEX Week H/L	4608/4592	M.Cap (mn)	3144599.0
	DSES	1104.62	2.05	0.2%	Group Performances			
	DS30	1741.60	(0.77)	0.0%				
Turnover Scenario				Category	Mkt Cap (mn.)	Δ % M.Cap	Turnover BDT (mn)	Δ % Turnover
Today's Turnover (mn.)	Change In BDT (mn.)	% Change		Group A	2,430,943.24	0.3%	3,035.22	-8.6%
3673.17	(229)	-5.9%		Group B	13,798.64	0.7%	101.22	-28.7%
				Group N	34,407.47	-0.1%	215.18	9.6%
				Group Z	24,120.95	-0.2%	15.50	-72.0%

Top Ten Volume (in BDT. crore)										
Stock	TT	YT	AT	% Δ in Turnover	TT/AT	CP	YP	% Δ P	Number of shares	Public Holding
SINGERBD	13.30	7.87	5.09	69.0%	161.5%	181.2	177.6	2.0%	76,694,491.3	20%
QSM DRYCELL	13.27	11.01	15.27	20.5%	-13.1%	123.2	117.1	5.2%	40,479,436.8	54%
BXP HARMA	12.58	16.83	17.35	-25.2%	-27.5%	84.4	85.2	-0.9%	386,244,234.6	50%
BEXIMCO	9.70	7.59	7.51	27.9%	29.1%	28.9	29.4	-1.7%	691,171,354.4	65%
BSRMSTEEL	8.97	5.59	10.62	60.6%	-15.5%	95.2	94.7	0.5%	341,775,000.0	13%
BSRMLTD	8.32	2.48	3.09	235.0%	169.4%	127	125	1.6%	173,351,038.0	9%
ACI	7.36	18.23	6.62	-59.6%	11.2%	563.2	567.5	-0.8%	39,553,240.3	27%
SQURPHARMA	7.33	15.62	12.60	-53.0%	-41.8%	253.6	253.8	-0.1%	623,586,546.0	9%
UPGDCL	7.32	4.15	5.99	76.3%	22.4%	139.8	137.7	1.5%	362,944,698.6	5%
EMERALDOIL	6.51	11.44	7.49	-43.1%	-13.1%	61.2	62.2	-1.6%	54,285,000.0	38%

TT= Today's Turnover in crore, YT= Yesterday's Turnover in Crore, AT= Average of Last 20 day's Turnover, CP= Current Price, YP= Yesterday's Price, % Δ P= percentage change in price

Top Ten Gainer						Top Ten Loser					
Stock	CP	YP	AP	% Δ P	% Δ in P from AP	Stock	CP	YP	AP	% Δ P	% Δ in P from AP
PRIMETEX	16.4	15.2	15.085	7.9%	8.7%	SAMATALETH	24.80	26.30	26.36	-5.7%	-5.9%
STYLECRAFT	930.9	867	865.795	7.4%	7.5%	SPCERAMICS	11.00	11.40	10.74	-3.5%	2.4%
MIDASFIN	17.1	16	15.87	6.9%	7.8%	SPCERAMICS	11.00	11.40	10.74	-3.5%	2.4%
SIMTEX	22.1	20.7	21.66	6.8%	2.0%	PRIMEINSUR	14.30	14.80	14.25	-3.4%	0.4%
ISNLTD	16	15.2	15.24	5.3%	5.0%	ACIFORMULA	191.70	198.40	174.96	-3.4%	9.6%
QSMDDRYCELL	123.2	117.1	105.035	5.2%	17.3%	AL-HAJTEX	110.70	114.50	105.79	-3.3%	4.6%
IMAMBUTTON	10.5	10	9.295	5.0%	13.0%	DAFODILCOM	19.40	20.00	19.38	-3.0%	0.1%
ANWARGALV	84.7	81	69.945	4.6%	21.1%	GREENDELT	53.70	55.20	52.33	-2.7%	2.6%
7THICB	115	110	112.2	4.5%	2.5%	GQBALLPEN	87.80	90.20	76.81	-2.7%	14.3%
ATLASBANG	162.6	155.8	147.18	4.4%	10.5%	AFTABAUO	63.90	65.60	63.32	-2.6%	0.9%

AP= Average Price of last 20 day,% Δ in P from AP= percentage change in price from the 20-day average price

Industry /Sectors overview (Amounts in BDT. Crore)											
Sector	Trade Volume		MKT Turnover %		% Δ in Turnover	Market Capitalization		% of Total MC		% Δ in MC	
	Today	Yesterday	Today	Yesterday		Today	Yesterday	Today	Yesterday		
Bank	30.05	21.59	0.09	0.06	39.1%	40709.42	40539.51	16.28%	16.26%	0.4%	
Cement	10.53	12.96	0.03	0.04	-18.7%	14757.90	14602.25	5.90%	5.86%	1.1%	
Ceramics	3.11	3.90	0.01	0.01	-20.3%	2652.95	2654.54	1.06%	1.06%	-0.1%	
Engineering	81.98	74.26	0.25	0.20	10.4%	15840.62	15779.40	6.34%	6.33%	0.4%	
Food & Allied Product	14.37	20.88	0.04	0.06	-31.2%	23425.43	23246.89	9.37%	9.32%	0.8%	
Insurance	9.27	11.54	0.03	0.03	-19.7%	7506.65	7503.56	3.00%	3.01%	0.0%	
IT	1.95	2.95	0.01	0.01	-33.9%	510.09	512.76	0.20%	0.21%	-0.5%	
Jute	0.49	0.58	0.00	0.00	-15.9%	86.32	87.42	0.03%	0.04%	-1.3%	
Miscellaneous	18.58	20.93	0.06	0.06	-11.3%	8075.62	8110.75	3.23%	3.25%	-0.4%	
Mutual Fund	2.32	3.75	0.01	0.01	-38.2%	3443.67	3425.24	1.38%	1.37%	0.5%	
NBFI	22.21	21.93	0.07	0.06	1.3%	8568.45	8552.45	3.43%	3.43%	0.2%	
Paper & Printing	0.83	1.64	0.00	0.00	-49.4%	182.37	183.70	0.07%	0.07%	-0.7%	
Pharmaceuticals & Chemicals	53.03	81.52	0.16	0.22	-34.9%	40938.33	40998.00	16.37%	16.44%	-0.1%	
Power & Energy	35.08	34.83	0.11	0.09	0.7%	33036.24	32939.79	13.21%	13.21%	0.3%	
Service & Real Estate	11.00	12.57	0.03	0.03	-12.4%	2032.18	2037.53	0.81%	0.82%	-0.3%	
Tannery	2.58	4.05	0.01	0.01	-36.4%	2433.63	2426.84	0.97%	0.97%	0.3%	
Telecommunication	3.36	4.25	0.01	0.01	-20.8%	35854.93	35858.54	14.34%	14.38%	0.0%	
Textile	27.73	29.54	0.08	0.08	-6.1%	7780.64	7741.40	3.11%	3.10%	0.5%	
Travel & Leisure	3.46	5.55	0.01	0.02	-37.7%	2174.18	2193.23	0.87%	0.88%	-0.9%	

MC= Market Capitalization, % Δ in Turnover= change in turnover from last day, % Δ in MC= change in Market cap from last day

Index Movers	Index Shakers	Sector wise P/E (Fd.)			
LAFSURCEML	SUMITPOWER	Bank	9.14	NBFI	38.75
BATBC	BEXIMCO	Cement	34.60	Paper & Printing	81.13
UPGDCL	BXPHERMA	Ceramics	43.76	Pharmaceuticals & Chemicals	27.70
BSRMLTD	ACIFORMULA	Engineering	29.38	Power & Energy	15.81
ISLAMIBANK	UNIQUEHRL	Food & Allied Product	30.68	Service & Real Estate	40.50
OLYMPIC	PRIMEBANK	Insurance	15.97	Tannery	51.54
ALARABANK	UCB	IT	22.90	Telecommunication	26.74
SINGERBD	TITASGAS	Jute	61.24	Textile	18.34
RENATA	ACI	Miscellaneous	35.78	Travel & Leisure	18.05
QSMDDRYCELL	BANKASIA				

Important News**Recent Dividend Declaration**

Ticker

Dividend

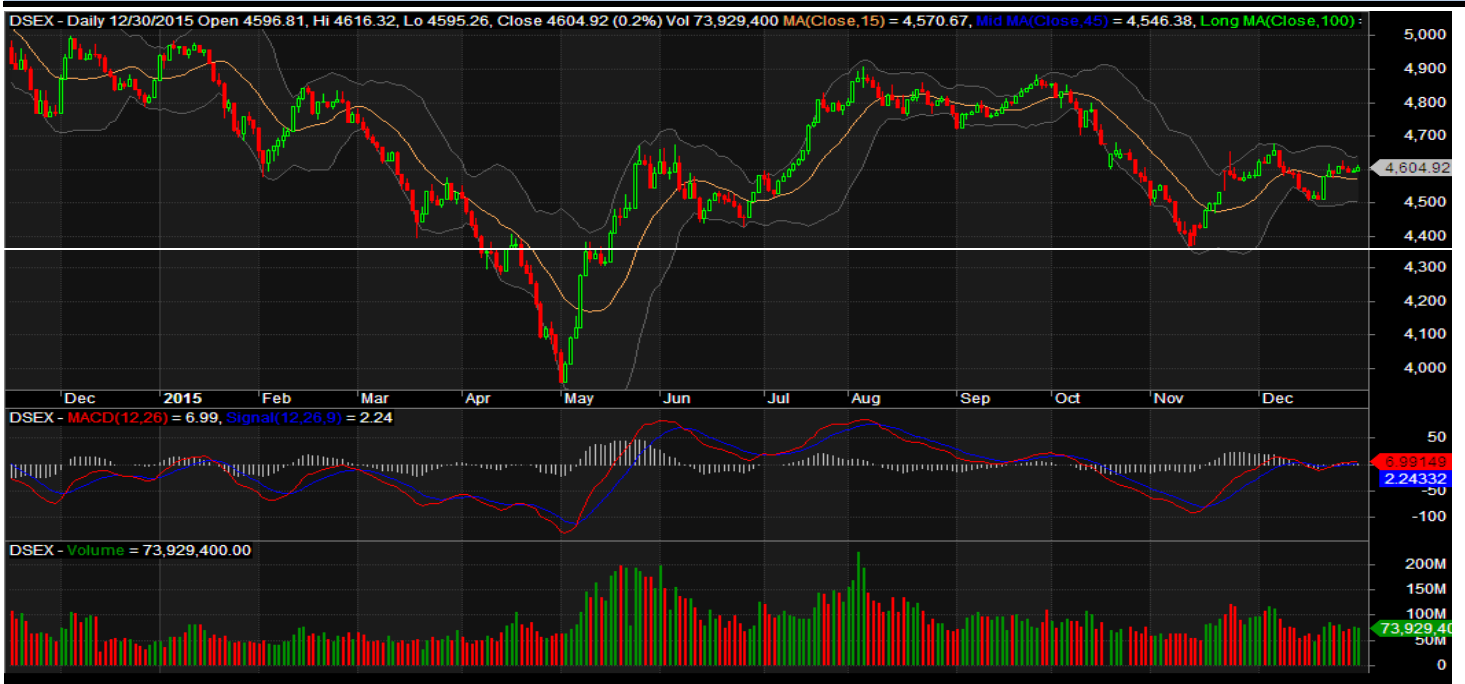
Record Date

Company News:

DELTASPINN: Category Change: The Company will be placed in 'B' category from existing 'A' category with effect from December 31, 2015 as the Company has approved 5% cash dividend for general shareholders (excluding Sponsors/Directors) for the year ended on June 30, 2015.

BSRMSTEEL: Issuance of Zero Coupon Bond (additional information): With reference to their earlier news (disseminated by DSE on 29.12.2015), the Company has further informed that the face value of each Zero Coupon Bond is Tk. 1,000.00 at Coupon/Discount Rate of 9.50% p.a.

Note: C= cash Dividend, B= Bonus Dividend, R=Right, N/A=NotApplicable

DSEX Technical Graph for last one year**MTB CAPITAL LIMITED**

Corporate head office

Level: 3, MTB Tower, 111, Kazi Nazrul Islam Avenue, Dhaka

Phone: 8321714, Fax: 8321543

www.mtbcap.com*A Mutual Trust Bank Company**you can invest with us***Disclaimer**

This report has been prepared by the MTB Capital Limited (MTBCL) on the basis of available information in the market and it is provided for the purposes only. It is not to be used as an offer for buying or selling any instruments. If anyone takes any action relying on this information, shall be responsible solely by him/her self for any consequences. The best care has been taken to make the report informative. MTBCL doesn't give any warrant or guarantee that the report or such information is fully accurate. The information that are provided here is the exclusive property of MTBCL and can not be distributed without prior consent of MTBCL.