

Today's Market Overview

Tuesday, November 10, 2015

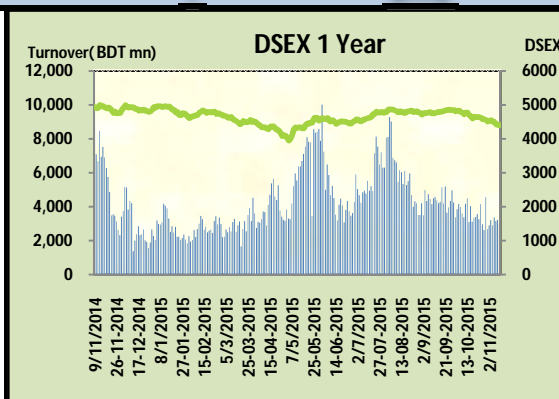


DSEX	4,410.58	-0.14%	Issues Traded	Advanced	Declined	Unchanged
Turnover (BDT mn)	2,940.76	-8.65%		103	164	45

Market continued the bearish run for the consecutive five trading days with a sluggish turnover as market behavior especially huge price fall in some big Cap stocks created panic in investors mind. Market faded hope of the investors again as it was in the support level and market started with positivity but couldn't sustain long due to selling bender. The premier bourse of the nation opened with positive mood but couldn't sustain for an hour but we have seen some recovery stance during the session as Bank, Cement & Pharmaceuticals were succeeded the concentration but strong sale pressure in some heavy weight stocks like TITASGAS and others refrain DSEX to become positive. Power & Engineering were in rush of plunging thus created the market negative. Participation level was so poor as maximum investors remained outside of the fence while existing investors were busy in choppy trading with shaky behavior. Among the other two indices of DS30 outperformed today while DSES the shariah based index remained in red zone.

The general gauge DSEX ended at 4410.58 with a decline of -0.1% which cut 6.33 points from the broad DSEX. The Turnover Declined by -8.7% which was 279 Million BDT poorer than that of previous day and finally finished the mark at 2940.76 million BDT. A total of 103 issues advanced with 164 declined and 45 remained unchanged. Sectors that improved were: Bank (+0.4%) Cement (+0.7%) Food (+0.6%) Pharmaceuticals (+0.2%) Jute (+1.9%) & sectors that declined were: Engineering (-2.1%) Miscellaneous (-0.4%) NBFI (-0.2%) Power (-1.9%) Travel (-1.4%) Textiles (-0.9%) Service (-1.6%)

TITASGAS topped in the Volume chart with a turnover of 25.12 BDT crore. RAHIMAFOD ranked top gainer chart with a price hike of +10% and ICB topped in the loser chart with a decline of -11.8% from its prevailing price. OLYMPIC led the way in the index mover chart while TITASGAS played the shatter part.



Index Scenario				Market Highlights				
	INDEX	Change	% Changes	DSEX 52 week H/L	5334/3960	Market P/E (LTM)	14.21	
DSEX	4410.58	(6.33)	-0.1%	DSEX Week H/L	4511/4410	M.Cap (mn)	3084800.9	
DSES	1066.17	(2.44)	-0.2%	Group Performances				
DS30	1681.48	1.24	0.1%	Category	Mkt Cap (mn.)	Δ % M.Cap	Turnover BDT (mn)	Δ % Turnover
Turnover Scenario				Group A	2,374,393.94	-0.3%	2,461.11	-10.7%
Today's Turnover (mn.)	Change In BDT (mn.)	% Change		Group B	12,508.27	-1.3%	86.35	11.1%
2940.76	(279)	-8.7%		Group N	29,134.10	-4.1%	325.56	-0.1%
				Group Z	23,112.41	1.1%	61.56	39.5%

Top Ten Volume (in BDT. crore)										
Stock	TT	YT	AT	% Δ in Turnover	TT/AT	CP	YP	% Δ P	Number of shares	Public Holding
TITASGAS	21.69	31.67	5.78	-31.5%	275.1%	54.3	57.7	-5.9%	989,221,831.0	25%
IFADAUTOS	18.90	18.74	11.54	0.9%	63.7%	119	124.5	-4.4%	115,000,000.0	17%
SQURPHARMA	11.10	12.99	8.89	-14.6%	24.9%	251.3	251.3	0.0%	623,586,546.0	9%
QSM DRYCELL	7.25	7.94	4.27	-8.7%	69.6%	81	82.8	-2.2%	36,799,488.0	54%
BXP HARMA	7.07	4.69	11.09	50.8%	-36.2%	72.1	71.8	0.4%	386,244,234.6	50%
LAFSURCEML	6.90	10.22	15.40	-32.5%	-55.2%	83.7	82.8	1.1%	1,161,373,500.0	30%
UPGDCL	6.67	14.96	5.34	-55.4%	24.9%	140.2	143.2	-2.1%	362,944,698.6	5%
KDSALTD	6.40	8.97	11.27	-28.7%	-43.2%	70.4	73.3	-4.0%	52,000,000.0	21%
EMERALDOIL	5.96	1.90	4.78	213.1%	24.7%	46	50.5	-8.9%	49,350,000.0	38%
SAIFPOWER	5.83	7.48	5.64	-22.1%	3.3%	66	67.8	-2.7%	70,985,380.0	19%

TT= Today's Turnover in crore, YT= Yesterday's Turnover in Crore, AT= Average of Last 20 day's Turnover, CP= Current Price, YP= Yesterday's Price, % Δ P= percentage change in price

Top Ten Gainer						Top Ten Loser					
Stock	CP	YP	AP	% Δ P	% Δ in P from AP	Stock	CP	YP	AP	% Δ P	% Δ in P from AP
RAHIMAFOOD	39.6	36	43.925	10.0%	-9.8%	ICB	114.00	129.30	129.70	-11.8%	-12.1%
RAHIMAFOOD	39.6	36	43.925	10.0%	-9.8%	MHSML	28.20	31.30	38.86	-9.9%	-27.4%
RAHIMAFOOD	39.6	36	43.925	10.0%	-9.8%	ZAHEENSPIN	21.10	23.40	27.48	-9.8%	-23.2%
NORTHERN	273	252.5	276.935	8.1%	-1.4%	EMERALDOIL	46.00	50.50	52.72	-8.9%	-12.7%
LEGACYFOOT	26.2	24.4	28.66	7.4%	-8.6%	SHYAMPUSUG	6.20	6.80	6.77	-8.8%	-8.4%
GEMINISEA	419.1	400.6	409.195	4.6%	2.4%	MIRACLEIND	22.50	24.30	21.99	-7.4%	2.3%
IPDC	24.7	23.7	22.805	4.2%	8.3%	PHARMAID	218.70	236.10	266.51	-7.4%	-17.9%
MITHUNKNIT	75.1	72.1	79.53	4.2%	-5.6%	AMANFEED	48.10	51.50	56.22	-6.6%	-14.4%
SAMATALETH	22.9	22	26.175	4.1%	-12.5%	PADMALIFE	29.20	31.20	32.57	-6.4%	-10.3%
BDWELDING	15.5	14.9	18.21	4.0%	-14.9%	STANCERAM	56.00	59.60	49.96	-6.0%	12.1%

AP= Average Price of last 20 day,% Δ in P from AP= percentage change in price from the 20-day average price

Industry /Sectors overview (Amounts in BDT. Crore)											
Sector	Trade Volume		MKT Turnover %		% Δ in Turnover	Market Capitalization		% of Total MC		% Δ in MC	
	Today	Yesterday	Today	Yesterday		Today	Yesterday	Today	Yesterday		
Bank	17.16	16.99	0.06	0.05	1.0%	39044.11	38893.17	16.03%	15.92%	0.4%	
Cement	9.76	13.73	0.03	0.04	-28.9%	15697.61	15595.79	6.44%	6.38%	0.7%	
Ceramics	3.49	4.52	0.01	0.01	-22.7%	2565.53	2565.65	1.05%	1.05%	0.0%	
Engineering	59.86	65.92	0.21	0.21	-9.2%	14135.48	14439.70	5.80%	5.91%	-2.1%	
Food & Allied Product	14.75	9.20	0.05	0.03	60.4%	23713.31	23576.23	9.74%	9.65%	0.6%	
Insurance	4.27	5.03	0.01	0.02	-15.1%	6454.62	6498.54	2.65%	2.66%	-0.7%	
IT	1.80	2.16	0.01	0.01	-16.5%	488.14	492.62	0.20%	0.20%	-0.9%	
Jute	2.54	1.10	0.01	0.00	130.5%	90.11	88.45	0.04%	0.04%	1.9%	
Miscellaneous	15.61	15.03	0.05	0.05	3.9%	7951.57	7983.48	3.26%	3.27%	-0.4%	
Mutual Fund	2.89	4.14	0.01	0.01	-30.3%	3399.53	3415.35	1.40%	1.40%	-0.5%	
NBFI	13.16	8.41	0.05	0.03	56.5%	7510.48	7526.22	3.08%	3.08%	-0.2%	
Paper & Printing	1.49	1.20	0.01	0.00	24.0%	179.92	179.76	0.07%	0.07%	0.1%	
Pharmaceuticals & Chemicals	41.57	39.63	0.14	0.12	4.9%	39923.48	39856.14	16.39%	16.31%	0.2%	
Power & Energy	54.62	76.74	0.19	0.24	-28.8%	33553.42	34217.74	13.78%	14.00%	-1.9%	
Service & Real Estate	8.26	10.47	0.03	0.03	-21.1%	1762.39	1791.74	0.72%	0.73%	-1.6%	
Tannery	2.98	1.18	0.01	0.00	152.8%	2381.96	2391.36	0.98%	0.98%	-0.4%	
Telecommunication	7.49	10.47	0.03	0.03	-28.5%	35352.67	35363.17	14.51%	14.47%	0.0%	
Textile	22.87	28.90	0.08	0.09	-20.9%	7471.61	7537.27	3.07%	3.08%	-0.9%	
Travel & Leisure	3.67	3.14	0.01	0.01	17.0%	1902.13	1928.98	0.78%	0.79%	-1.4%	

MC= Market Capitalization, % Δ in Turnover= change in turnover from last day, % Δ in MC= change in Market cap from last day

Index Movers	Index Shakers	Sector wise P/E			
OLYMPIC	TITASGAS	Bank	9.34	NBFI	38.01
LAFSURCEML	UPGDCL	Cement	34.82	Paper & Printing	58.63
PRIMEBANK	DESCO	Ceramics	45.59	Pharmaceuticals & Chemicals	28.69
RENATA	BSRMLTD	Engineering	27.77	Power & Energy	16.56
ACI	ICB	Food & Allied Product	32.27	Service & Real Estate	43.08
DUTCHBANGL	IFADAUTOS	Insurance	14.01	Tannery	49.36
PADMAOIL	BSRMSTEEL	IT	17.62	Telecommunication	24.09
BRACBANK	SUMITPOWER	Jute	109.00	Textile	17.16
EBL	POWERGRID	Miscellaneous	34.81	Travel & Leisure	12.30
MJLBD	SIBL				

Important News

Company News:

ICB: Dividend Declaration: The Board of Directors has recommended 35% cash dividend for the year ended on June 30, 2015. Date of AGM: 26.12.2015, Time: 10:30 AM, Venue: "Jalshaghar", Hotel Purbani International Ltd., 1 Dilkusha C/A, Dhaka - 1000. Record Date: 30.11.2015. The Corporation has reported consolidated net profit after tax of Tk. 4,393.60 million, consolidated EPS of Tk. 7.66, consolidated NAV per share of Tk. 69.20 and

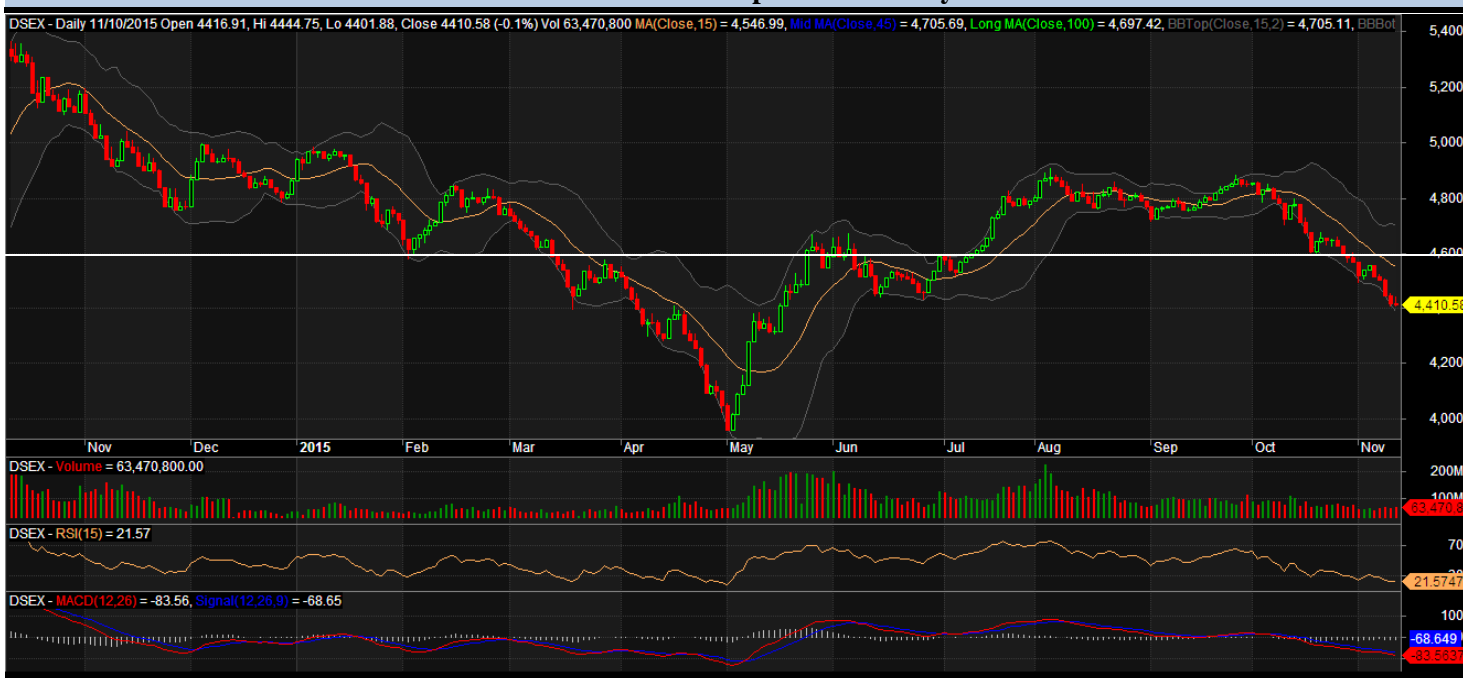
consolidated NOCFPS of Tk. 15.98 for the year ended on 30.06.2015 as against Tk. 3,681.70 million, Tk. 6.94, Tk. 48.93 and Tk. 21.56 respectively for the year ended on 30.06.2014. The Corporation has also reported net profit after tax of Tk. 4,067.30 million, EPS of Tk. 7.10, NAV per share of Tk. 60.94 and NOCFPS of Tk. 11.59 for the year ended on 30.06.2015 as against Tk. 3,181.10 million, Tk. 5.99, Tk. 41.22 and Tk. 19.21 respectively for the year ended on 30.06. 2014

Recent Dividend Declaration

Ticker	Dividend	Record Date
Paramount Textile Limited	16% C	15.11.2015
IFAD Autos Limited	7% C & 30% B	15.11.2015
Aamra technologies limited	10% C	16.11.2015
Anlimayam Deying Ltd.	10% C	15.11.15
Rahim Textile Mills Ltd.	40% B	17.11.15
CVO Petrochemical Refinery Limited	15% C & 25% B	15.11.15
Fu-Wang Foods Limited	15% B	19.11.15
others PP Woven Bag Industries	15% B	23.11.15

Note: C= cash Dividend, B= Bonus Dividend, R=Right, N/A=NotApplicable

DSEX Technical Graph for last one year



MTB CAPITAL LIMITED

Corporate head office

Level: 3, MTB Tower, 111, Kazi Nazrul Islam Avenue, Dhaka

Phone: 8321714, Fax: 8321543

www.mtbcap.com

A mutual Trust Bank Company

you can invest with US

Disclaimer

This report has been prepared by the MTB Capital Limited (MTBCL) on the basis of available information in the market and it is provided for the purposes only. It is not to be used as an offer for buying or selling any instruments. If anyone takes any action relying on this information, shall be responsible solely by him/her self for any consequences. The best care has been taken to make the report informative. MTBCL doesn't give any warrant or guarantee that the report or such information is fully accurate. The information that are provided here is the exclusive property of MTBCL and can not be distributed without prior consent of MTBCL.