

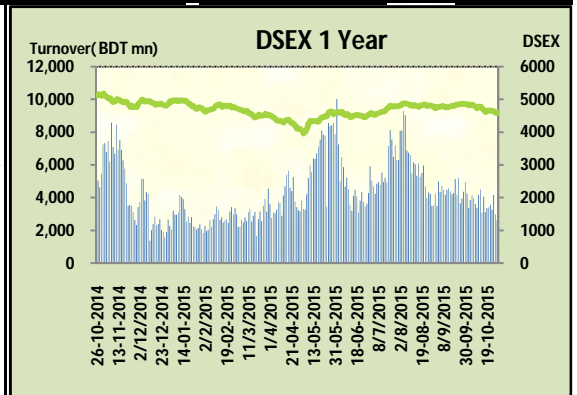
Today's Market Overview



Wednesday, October 28, 2015

DSEX	4,579.37	-0.22%	Issues Traded	↑ Advanced 123	↓ Declined 147	↔ Unchanged 45
Turnover (BDT mn)	2,625.62	-11.61%				

Market continued the bearish run for the consecutive three trading sessions with a sluggish turnover as market suffered from lack of participation. The premier bourse of the nation opened with a very negative mood and continued the same mood till the closure, during the midsession the poor level of participation upset the investors but last hour choppy trading somehow managed to cross the 2.5 billion mark with a marginal loss. Latest regulatory order has come out with the obligation of margin loan on newly listed issues and category changed issues. Most of the major and prominent sectors still remained on slumbering mood Bank, Tannery & Pharmaceuticals tried to get some concentration but others failed to get that. Other two indices DS30 & DSES the shariah based index both performed poor. The general gauge DSEX ended at 4579.37 with a decline of -0.2% which cut 9.96 points from the broad DSEX. The Turnover declined heavily by -11.6% which was 345 Million BDT poorer than that of previous day and finally finished the mark at 2625.62 million BDT. A total of 123 issues advanced with 147 declined and 45 remained unchanged. Sectors that improved were: Bank (+0.3%) Pharmaceuticals (+0.1%) Tannery (+0.6%) Mutual Fund (+0.3%) & sectors that declined were: Cement (-0.5) Ceramics (-0.6%) Engineering (-0.1%) (-0.6%) Power (-0.7%) Service (-0.2%) Telecom (-0.5%) Textile (-0.6%) Travel (-0.7%) Miscellaneous (-1.3%) Insurance (-1.1%) SINGERBD topped in the Volume chart with a turnover of 12.98 BDT crore. DELTASPINN ranked top gainer chart with a price hike of +10% and OFARCHEM topped in the loser chart with a decline of -22.1% from its prevailing price. MARICO led the way in the index mover chart while GP played the shatter part.



Index Scenario				Market Highlights					
	INDEX	Change	% Changes	DSEX 52 week H/L	5334/3960	Market P/E (LTM)	14.67		
	DSEX	4579.37	(9.96)	-0.2%	DSEX Week H/L	4649/4579	M.Cap (mn)	3173522.2	
	DSES	1097.18	(4.43)	-0.4%	Group Performances				
	DS30	1730.84	(4.85)	-0.3%	Category	Mkt Cap (mn.)	Δ % M.Cap	Turnover BDT (mn)	Δ % Turnover
Turnover Scenario				Group A	2,448,901.37	-0.3%	2,209.05	-9.5%	
Today's Turnover (mn.)	Change In BDT (mn.)	% Change		Group B	13,874.66	-2.2%	173.56	20.8%	
2625.62	(345)	-11.6%		Group N	30,561.13	-1.6%	203.99	-27.1%	
				Group Z	24,055.53	-1.3%	28.88	2.4%	

Top Ten Volume (in BDT. crore)											
Stock	TT	YT	AT	% Δ in Turnover	TT/AT	CP	YP	% Δ P	Number of shares	Public Holding	
SINGERBD	12.98	0.44	1.96	2849.2%	560.6%	155.5	151	3.0%	76,694,491.3	20%	
LAFSURCEML	12.27	16.90	17.07	-27.4%	-28.1%	82.3	82.6	-0.4%	1,161,373,500.0	30%	
KDSALTD	9.28	8.75	14.92	6.1%	-37.8%	71.4	72.5	-1.5%	52,000,000.0	21%	
CNATEX	6.42	8.41	4.09	-23.6%	57.1%	13.9	14.4	-3.5%	194,250,000.0	23%	
UNITEDAIR	6.12	10.23	6.47	-40.2%	-5.5%	9.7	9.8	-1.0%	624,808,800.0	74%	
CVOPRL	5.91	6.39	5.69	-7.7%	3.7%	434.4	437	-0.6%	19,800,000.0	34%	
SPCL	5.65	12.35	5.62	-54.3%	0.5%	160.7	165.3	-2.8%	133,137,900.0	19%	
MIRACLEIND	5.60	5.83	1.67	-4.0%	236.4%	26.9	26.1	3.1%	25,358,117.4	46%	
SQURPHARMA	5.41	6.65	8.13	-18.7%	-33.5%	242.8	242.1	0.3%	623,586,546.0	9%	
UCBL	4.99	2.93	5.69	70.6%	-12.3%	21	20.8	1.0%	1,003,933,957.2	58%	

TT= Today's Turnover in crore, YT= Yesterday's Turnover in Crore, AT= Average of Last 20 day's Turnover, CP= Current Price, YP= Yesterday's Price, % Δ P= percentage change in price

Top Ten Gainer						Top Ten Loser					
Stock	CP	YP	AP	% Δ P	% Δ in P from AP	Stock	CP	YP	AP	% Δ P	% Δ in P from AP
DELTASPINN	11	10	10.355	10.0%	6.2%	FARCHEM	27.90	35.80	39.43	-22.1%	-29.2%
ANLIMAYARN	21.6	19.7	21.45	9.6%	0.7%	IMAMBUTTOI	9.20	11.80	12.71	-22.0%	-27.6%
STANCERAM	52.8	48.9	48.185	8.0%	9.6%	BENGALWTL	55.40	68.00	68.36	-18.5%	-19.0%
DSHGARME	117.1	109.4	93.005	7.0%	25.9%	AZIZPIPES	38.10	42.30	34.58	-9.9%	10.2%
SAMATALETH	28.9	27	29.16	7.0%	-0.9%	NLTUBES	103.10	114.40	118.36	-9.9%	-12.9%
NITOLINS	21.5	20.4	22.18	5.4%	-3.1%	ILFSL	9.40	10.40	10.74	-9.6%	-12.5%
KAY&QUE	19.3	18.4	16.24	4.9%	18.8%	ZAHEENSPIN	26.10	28.70	29.99	-9.1%	-13.0%
GEMINISEA	409.2	392.9	387.29	4.1%	5.7%	MONNOCERA	35.70	38.50	41.03	-7.3%	-13.0%
SPCERAMICS	12.6	12.1	12.49	4.1%	0.9%	MODERNDYE	111.30	119.70	143.62	-7.0%	-22.5%
BSRMLTD	117.1	112.5	124.01	4.1%	-5.6%	RENWICKJA	240.50	258.40	269.25	-6.9%	-10.7%

AP= Average Price of last 20 day,% Δ in P from AP= percentage change in price from the 20-day average price

Industry /Sectors overview (Amounts in BDT. Crore)											
Sector	Trade Volume		MKT Turnover %		% Δ in Turnover	Market Capitalization		% of Total MC		% Δ in MC	
	Today	Yesterday	Today	Yesterday		Today	Yesterday	Today	Yesterday		
Bank	25.58	25.44	0.10	0.09	0.6%	40180.14	40069.96	15.98%	15.89%	0.3%	
Cement	16.43	19.96	0.06	0.07	-17.6%	15788.94	15865.01	6.28%	6.29%	-0.5%	
Ceramics	3.53	3.72	0.01	0.01	-5.1%	2683.54	2698.50	1.07%	1.07%	-0.6%	
Engineering	52.49	42.21	0.20	0.15	24.4%	14443.48	14464.72	5.75%	5.74%	-0.1%	
Food & Allied Product	8.67	16.17	0.03	0.06	-46.4%	24063.78	24139.38	9.57%	9.57%	-0.3%	
Insurance	4.22	3.24	0.02	0.01	30.4%	6886.51	6960.19	2.74%	2.76%	-1.1%	
IT	1.84	2.16	0.01	0.01	-14.8%	518.20	518.89	0.21%	0.21%	-0.1%	
Jute	0.58	0.66	0.00	0.00	-12.8%	90.48	93.99	0.04%	0.04%	-3.7%	
Miscellaneous	19.13	21.14	0.07	0.07	-9.5%	8179.21	8289.98	3.25%	3.29%	-1.3%	
Mutual Fund	3.47	4.39	0.01	0.02	-21.0%	3496.83	3488.10	1.39%	1.38%	0.3%	
NBFI	8.93	11.78	0.03	0.04	-24.2%	7915.04	7914.92	3.15%	3.14%	0.0%	
Paper & Printing	2.55	2.14	0.01	0.01	19.5%	217.42	219.77	0.09%	0.09%	-1.1%	
Pharmaceuticals & Chemicals	25.43	28.81	0.10	0.10	-11.7%	40212.21	40174.74	16.00%	15.94%	0.1%	
Power & Energy	30.57	49.40	0.12	0.17	-38.1%	36961.16	37213.48	14.70%	14.76%	-0.7%	
Service & Real Estate	5.49	6.70	0.02	0.02	-18.0%	1807.88	1810.67	0.72%	0.72%	-0.2%	
Tannery	6.02	5.88	0.02	0.02	2.4%	2519.67	2504.06	1.00%	0.99%	0.6%	
Telecommunication	5.73	3.52	0.02	0.01	62.5%	35166.54	35349.58	13.99%	14.02%	-0.5%	
Textile	30.43	29.41	0.12	0.10	3.5%	8071.20	8119.59	3.21%	3.22%	-0.6%	
Travel & Leisure	7.19	11.34	0.03	0.04	-36.6%	2198.69	2213.77	0.87%	0.88%	-0.7%	

MC= Market Capitalization, % Δ in Turnover= change in turnover from last day, % Δ in MC= change in Market cap from last day

Index Movers	Index Shakers	Sector wise P/E			
MARICO	GP	Bank	9.39	NBFI	21.12
BSRMLTD	BENGALWTL	Cement	33.90	Paper & Printing	83.43
BATBC	OLYMPIC	Ceramics	37.44	Pharmaceuticals & Chemicals	27.17
BSRMSTEEL	FARCHEM	Engineering	28.46	Power & Energy	14.97
SQURPHARMA	TITASGAS	Food & Allied Product	33.41	Service & Real Estate	41.06
PRIMEBANK	BERGERPBL	Insurance	14.68	Tannery	55.95
CITYBANK	SPCL	IT	18.26	Telecommunication	23.95
GLAXOSMITH	MICEMENT	Jute	112.47	Textile	17.53
SINGERBD	DUTCHBANGL	Miscellaneous	32.88	Travel & Leisure	14.34
BATASHOE	RENATA				

Important News

Company News:

SQRPHARMA: Q2 Financials:Q2 Un-audited): Consolidated EPS was Tk. 3.18 for July-September, 2015 as against Tk. 2.09 for July-September, 2014; Consolidated EPS was Tk. 6.09 for April-September, 2015 as against Tk. 4.32 for April-September, 2014. Consolidated NOCFPS was Tk. 6.87 for April-September, 2015 as against Tk. 3.94 for April-September, 2014. Consolidated NAV per share was Tk. 53.37 as of September 30, 2015 and Tk. 49.86 as of March 31, 2015.

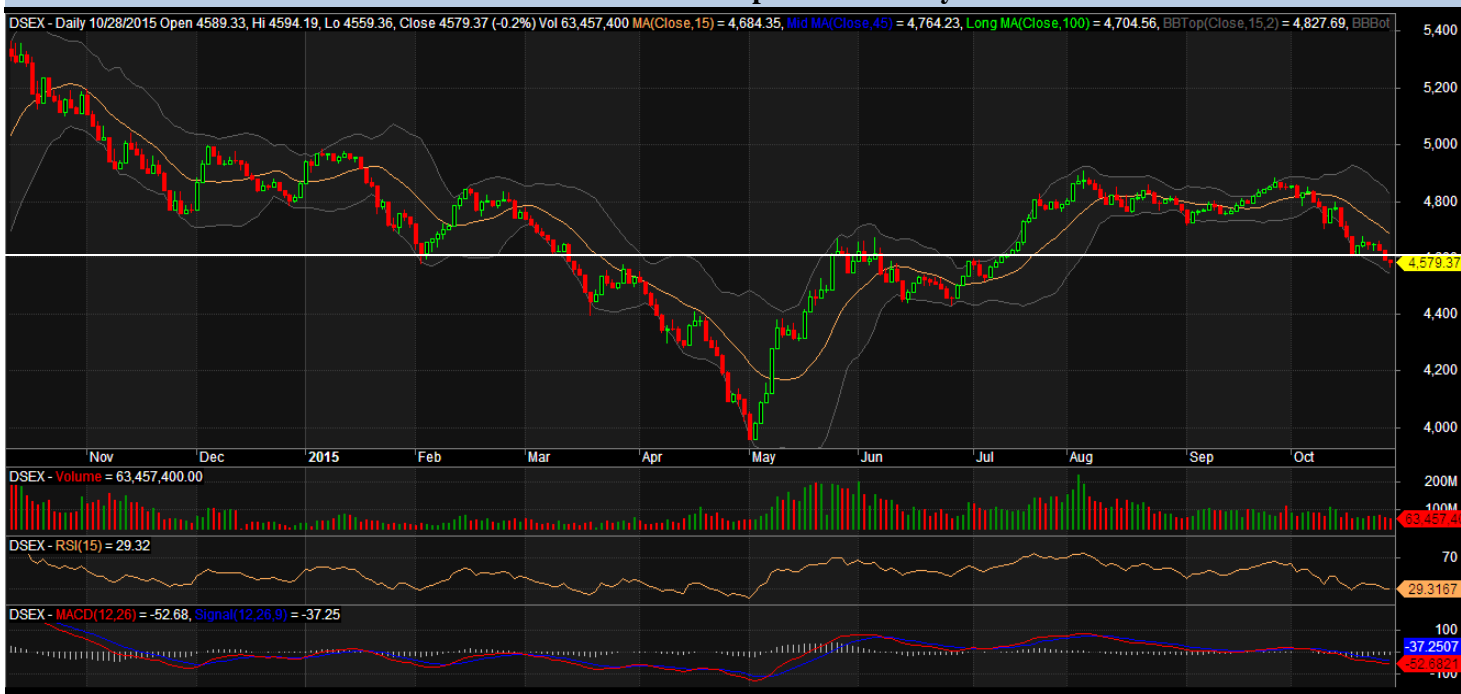
SQUARETEXT: Q3 Financials: (Q3 Un-audited): Consolidated EPS was Tk. 1.26 for July-September, 2015 as against Tk. 1.09 for July-September, 2014; Consolidated EPS was Tk. 3.73 for January-September, 2015 as against Tk. 4.00 for January-September, 2014. Consolidated NOCFPS was Tk. 6.22 for January-September, 2015 as against Tk. 5.72 for January-September, 2014. Consolidated NAV per share was Tk. 41.84 as of September 30, 2015 and Tk. 39.93 as of December 31, 2014.

Recent Dividend Declaration

Ticker	Dividend	Record Date
Paramount Textile Limited	16% C	15.11.2015
IFAD Autos Limited	7% C & 30% B	15.11.2015
Aamra technologies limited	10% C	16.11.2015
Anlimayam Deying Ltd.	10% C	15.11.15
Rahim Textile Mills Ltd.	40% B	17.11.15
CVO Petrochemical Refinery Limited	15% C & 25% B	15.11.15
Fu-Wang Foods Limited	15% B	19.11.15
Others PP Woven Bag Industries	15% B	23.11.15

Note: C= cash Dividend, B= Bonus Dividend, R=Right, N/A=NotApplicable

DSEX Technical Graph for last one year



MTB CAPITAL LIMITED

Corporate head office

Level: 3, MTB Tower, 111, Kazi Nazrul Islam Avenue, Dhaka

Phone: 8321714, Fax: 8321543

www.mtbcap.com

A mutual Trust Bank Company

you can invest with US

Disclaimer

This report has been prepared by the MTB Capital Limited (MTBCL) on the basis of available information in the market and it is provided for the purposes only. It is not to be used as an offer for buying or selling any instruments. If anyone takes any action relying on this information, shall be responsible solely by him/her self for any consequences. The best care has been taken to make the report informative. MTBCL doesn't give any warrant or guarantee that the report or such information is fully accurate. The information that are provided here is the exclusive property of MTBCL and can not be distributed without prior consent of MTBCL.