

Today's Market Overview

Thursday, April 28, 2016

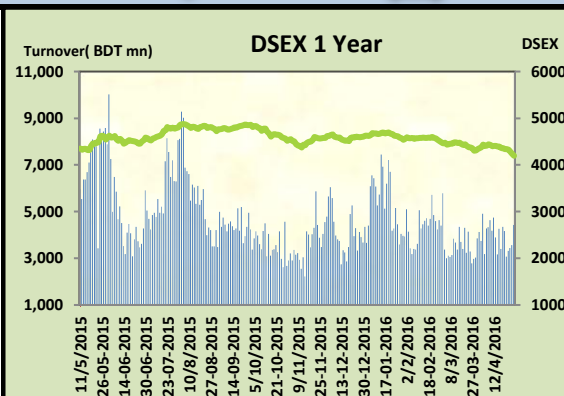


DSEX	4,195.70	-1.02%	Issues Traded	↑ Advanced 78	↓ Declined 194	↔ Unchanged 44
Turnover (BDT mn)	4,422.29	24.07%				

Market portrayed exactly the previous day's scenario today with slightly improved turnover. The premier bourse of the nation opened with a negative mood and continued the same mood till the closure. Some news regarding bank exposures from Bangladesh Bank couldn't motivate sellers to refrain themselves from sale pressure, moreover sellers became very aggressive and continued rampage throughout the session. Due to huge sale pressure DSEX failed to keep its position above 4200 mark. almost all the major sectors failed to perform. Investors suffered from confidence and fear as some good dividend related news couldn't calm their temptation from selling. Major sectors performed very poor as investors from Power, Cement, Pharmaceuticals & Telecom were in discomfort. Other two indices DS30 & DSES the shariah based index both failed to perform.

The general gauge DSEX ended at 4195.70 with a decline of -1.02% which cut 43.25 points from the broad DSEX. The Turnover advance by +24.1% which was 858 Million BDT healthier than that of previous day and finally finished the mark at 4422.29 million BDT. A total of 78 issues advanced with 194 declined and 44 remained unchanged. Sectors that improved were: Engineering (+1.2%) IT (+0.9%) Sectors that declined were: Bank (-0.2%) Cement (-2.2%) Power (-1.5%) Pharmaceuticals (-1.1%) NBFII (-1.0%) Telecom (-1.5%) Insurance (-1.9%) Service (-1.2%) Textiles (-2.1%)

UPGDCL topped in the Volume chart with a turnover of 33.78 BDT crore. BSRMLTD ranked top in gainer chart with a price hike of +7.4 % and FIRSTFIN topped in the loser chart with a decline of -26.4% from its prevailing price. BSRMLTD led the way in the index mover chart while GP played the shatter part.



Index Scenario				Market Highlights				
INDEX	Change	% Changes		DSEX 52 week H/L	4992/3960	Market P/E (LTM)	12.96	
DSEX	4195.70	(43.25)	-1.02%	DSEX Week H/L	4338/4195	M.Cap	2999852.9	
DSES	1025.15	(9.54)	-0.92%	Group Performances				
DS30	1612.34	(20.44)	-1.25%	Category	Mkt Cap (mn.)	Δ % M.Cap	Turnover BDT (mn)	Δ % Turnover
Turnover Scenario				Group A	2,282,682.07	-0.9%	3,126.97	32.4%
Today's Turnover (mn.)	Change In BDT (mn.)	% Change		Group B	10,500.58	-2.0%	55.38	-1.7%
4422.29	858	24.1%		Group N	39,946.24	-2.1%	221.63	-2.8%
				Group Z	37,206.92	-4.2%	290.47	386.0%

Top Ten Volume (in BDT. crore)										
Stock	TT	YT	AT	% Δ in Turnover	TT/AT	CP	YP	% Δ P	Number of shares	Public Holding
UPGDCL	33.78	9.31	9.27	262.8%	264.4%	161	159.8	0.8%	362,944,698.6	5%
KEYACOSMET	26.42	4.01	11.55	558.3%	128.8%	10.9	11.9	-8.4%	707,702,444.0	66%
BSRMLTD	21.21	12.75	13.25	66.3%	60.1%	142	132.2	7.4%	190,686,141.8	9%
ACI	19.37	3.72	9.03	420.5%	114.6%	525.3	566.2	-7.2%	39,553,240.3	27%
MJLBD	14.17	12.59	11.77	12.6%	20.4%	99.8	102.1	-2.3%	274,244,180.0	9%
BRACBANK	12.31	0.73	1.07	1592.2%	1045.9%	41.4	41.4	0.0%	709,287,321.0	46%
JAMUNAOIL	10.69	13.04	7.81	-18.0%	36.9%	193.3	198.9	-2.8%	110,424,600.0	20%
MPETROLEUM	7.53	9.64	4.57	-21.9%	64.9%	180.1	184	-2.1%	108,216,108.0	17%
LANKABAFIN	6.97	3.43	11.37	103.2%	-38.7%	32	31.6	1.3%	276,739,950.1	61%
SQURPHARMA	5.99	7.60	5.95	-21.2%	0.7%	253.4	253.5	0.0%	623,586,546.0	9%

TT= Today's Turnover in crore, YT= Yesterday's Turnover in Crore, AT= Average of Last 20 day's Turnover, CP= Current Price, YP= Yesterday's Price, % Δ P= percentage change in price

 **Top Ten Gainer**

Top Ten Loser 

Stock	CP	YP	AP	% Δ P	% Δ in P from AP	Stock	CP	YP	AP	% Δ P	% Δ in P from AP
BSRMLTD	142	132.2	175.455	7.4%	-19.1%	FIRSTFIN	6.40	8.70	9.50	-26.4%	-32.6%
LINDEBD	1199.8	1129.3	1124.335	6.2%	6.7%	REGENTTEX	11.30	13.50	16.47	-16.3%	-31.4%
EASTRN LUB	1367.4	1288.9	1038.53	6.1%	31.7%	ECABLES	141.10	156.70	133.98	-10.0%	5.3%
MERCINS	12.2	11.5	12.19	6.1%	0.1%	GBBPOWER	14.10	15.50	16.43	-9.0%	-14.2%
ISLAMIINS	15.8	15.1	15.415	4.6%	2.5%	TOSRIFA	13.10	14.40	16.26	-9.0%	-19.4%
IPDC	22.7	21.8	21.705	4.1%	4.6%	GSPFINANCE	11.40	12.50	14.17	-8.8%	-19.5%
ZEALBANGLA	7.9	7.6	6.48	3.9%	21.9%	DESCO	47.10	51.60	54.09	-8.7%	-12.9%
TRUSTBANK	16.9	16.3	17.045	3.7%	-0.9%	JUTESPINN	50.20	54.90	54.00	-8.6%	-7.0%
LIBRAINFU	654.1	632.1	548.36	3.5%	19.3%	ARAMITCEM	27.20	29.70	33.09	-8.4%	-17.8%
NORTHRNINS	15.1	14.6	15.545	3.4%	-2.9%	NORTHERN	223.30	243.80	239.65	-8.4%	-6.8%

AP= Average Price of last 20 day,% Δ in P from AP= percentage change in price from the 20-day average price

Industry /Sectors overview (Amounts in BDT. Crore)

Sector	Trade Volume		MKT Turnover %		% Δ in Turnover	Market Capitalization		% of Total MC		% Δ in MC
	Today	Yesterday	Today	Yesterday		Today	Yesterday	Today	Yesterday	
Bank	29.81	17.91	0.08	0.07	66.4%	35401.85	35477.45	14.97%	14.86%	-0.2%
Cement	7.85	11.43	0.02	0.04	-31.3%	12337.64	12619.41	5.22%	5.29%	-2.2%
Ceramics	5.61	2.33	0.02	0.01	140.8%	2411.74	2412.18	1.02%	1.01%	0.0%
Engineering	49.53	36.55	0.14	0.14	35.5%	14088.06	13925.41	5.96%	5.83%	1.2%
Food & Allied Product	11.87	13.09	0.03	0.05	-9.3%	23456.72	23478.02	9.92%	9.84%	-0.1%
Insurance	7.32	5.62	0.02	0.02	30.4%	6635.37	6763.68	2.81%	2.83%	-1.9%
IT	4.48	2.49	0.01	0.01	80.2%	930.41	922.14	0.39%	0.39%	0.9%
Jute	1.76	0.70	0.00	0.00	151.7%	81.62	86.75	0.03%	0.04%	-5.9%
Miscellaneous	13.83	13.45	0.04	0.05	2.8%	8067.55	8144.20	3.41%	3.41%	-0.9%
Mutual Fund	2.60	1.70	0.01	0.01	53.0%	3541.13	3542.34	1.50%	1.48%	0.0%
NBFI	17.70	10.48	0.05	0.04	68.9%	7500.37	7577.25	3.17%	3.17%	-1.0%
Paper & Printing	0.24	0.23	0.00	0.00	4.1%	143.29	146.84	0.06%	0.06%	-2.4%
Pharmaceuticals & Chemicals	71.87	37.85	0.20	0.14	89.9%	40102.79	40554.57	16.96%	16.99%	-1.1%
Power & Energy	107.66	79.31	0.29	0.30	35.7%	34155.13	34680.96	14.45%	14.53%	-1.5%
Service & Real Estate	3.99	3.97	0.01	0.01	0.3%	1617.23	1636.61	0.68%	0.69%	-1.2%
Tannery	1.41	1.87	0.00	0.01	-24.6%	2162.45	2178.16	0.91%	0.91%	-0.7%
Telecommunication	5.62	6.38	0.02	0.02	-11.9%	34940.24	35476.75	14.78%	14.86%	-1.5%
Textile	19.90	19.72	0.05	0.07	0.9%	7143.51	7298.89	3.02%	3.06%	-2.1%
Travel & Leisure	3.12	2.39	0.01	0.01	30.6%	1720.77	1750.42	0.73%	0.73%	-1.7%

MC= Market Capitalization, % Δ in Turnover= change in turnover from last day, % Δ in MC= change in Market cap from last day

Index Movers	Index Shakers	Sector wise P/E (Fd.)			
BSRMLTD	GP	Bank	7.21	NBFI	18.04
LINDEBD	LAFSURCEML	Cement	23.55	Paper & Printing	79.52
BSRMSTEEL	DESCO	Ceramics	32.22	Pharmaceuticals & Chemicals	26.50
BATBC	ACI	Engineering	80.56	Power & Energy	16.58
UPGDCL	POWERGRID	Food & Allied Product	30.13	Service & Real Estate	28.75
ALARABANK	SPCL	Insurance	12.22	Tannery	32.02
TRUSTBANK	DELTALIFE	IT	95.70	Telecommunication	21.69
RENATA	TITASGAS	Jute	420.08	Textile	16.33
ABBANK	GLAXOSMITH	Miscellaneous	30.75	Travel & Leisure	17.34
SUMITPOWER	MJLBD				

Important News

Company News:

ACI: Dividend Declaration: The Board of Directors has recommended 115% cash and 10% stock dividend for the year ended on December 31, 2015. Date of AGM: 09.06.2016, Time: 11:00 AM, Venue: Officers Club, 26 Baily Road, Dhaka. Record Date: 19.05.2016. The Company has also reported consolidated EPS of Tk. 72.33, consolidated NAV per share of Tk. 245.30 and consolidated NOCFPS of Tk. (35.80) for the year ended on December 31, 2015 as against Tk. 14.49, Tk. 120.30 and Tk. 1.23 respectively for the year ended on December 31, 2014

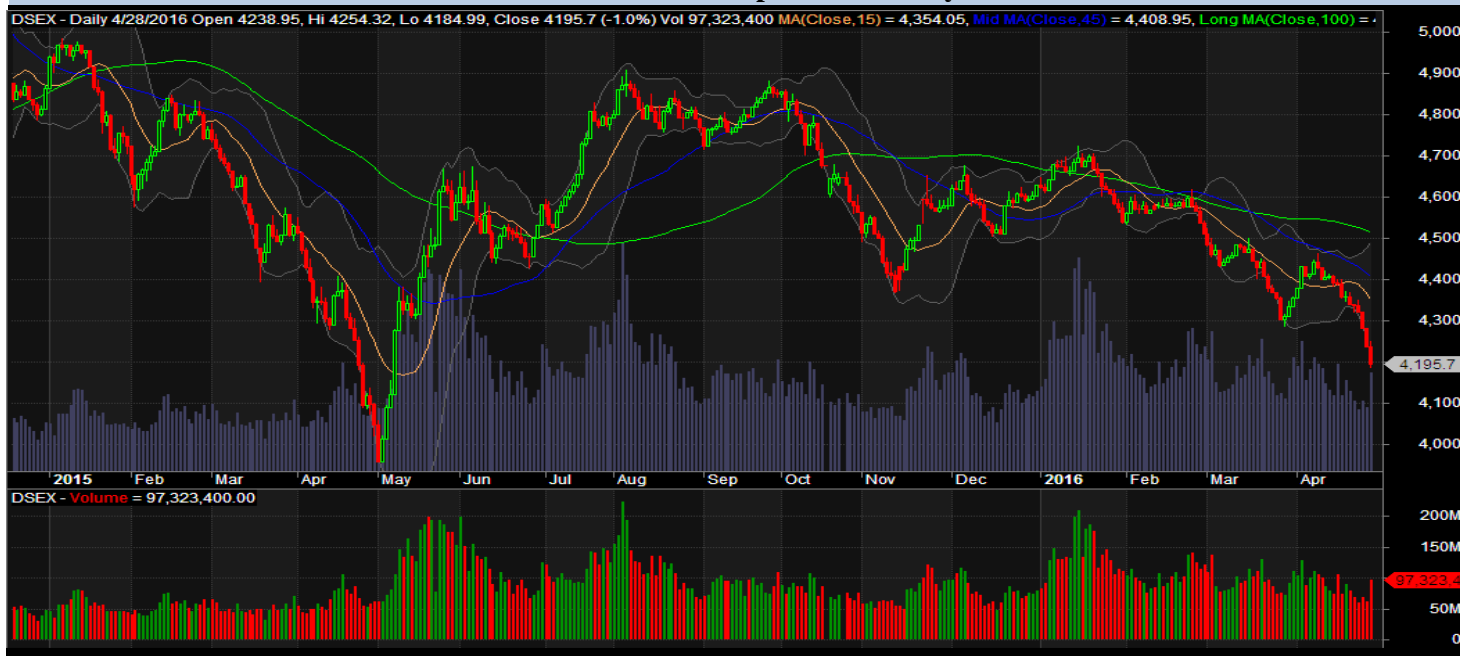
ACIFORMULA: Dividend Declaration: The Board of Directors has recommended 35% cash dividend for the year ended on December 31, 2015. Date of AGM: 09.06.2016, Time: 9:00 AM, Venue: Officers Club, 26 Baily Road, Dhaka. Record Date: 19.05.2016. The Company has also reported consolidated EPS of Tk. 5.06, consolidated NAV per share of Tk. 52.02 and consolidated NOCFPS of Tk. (5.15) for the year ended on December 31, 2015 as against Tk. 4.14, Tk. 40.10 and Tk. 0.26 respectively for the year ended on December 31, 2014.

Recent Dividend Declaration

Ticker	Dividend	Record Date
Beximco Pharmaceuticals Limited	10% C & 5% B	12.05.2016
Bangladesh Export Import Co. Ltd..	15% B	12.05.2016
Dragon Sweater and Spinning Limited	15% B	12.05.2016
EXIM Bank of Bangladesh Ltd.	12% C	15.05.2016
Brac Bank Limited	25% C	12.05.2016
Islami Bank Limited	20% C	11.05.2016

Note: C= cash Dividend, B= Bonus Dividend, R=Right, N/A=NotApplicable

DSEX Technical Graph for last one year



MTB CAPITAL LIMITED

Corporate head office

Level: 3, MTB Tower, 111, Kazi Nazrul Islam Avenue, Dhaka

Phone: 8321714, Fax: 8321543

www.mtbcap.com

A Mutual Trust Bank Company

you can invest with us

Disclaimer

This report has been prepared by the MTB Capital Limited (MTBCL) on the basis of available information in the market and it is provided for the purposes only. It is not to be used as an offer for buying or selling any instruments. If anyone takes any action relying on this information, shall be responsible solely by him/her self for any consequences. The best care has been taken to make the report informative. MTBCL doesn't give any warrant or guarantee that the report or such information is fully accurate. The information that are provided here is the exclusive property of MTBCL and can not be distributed without prior consent of MTBCL.