

Today's Market Overview

Tuesday, September 29, 2015

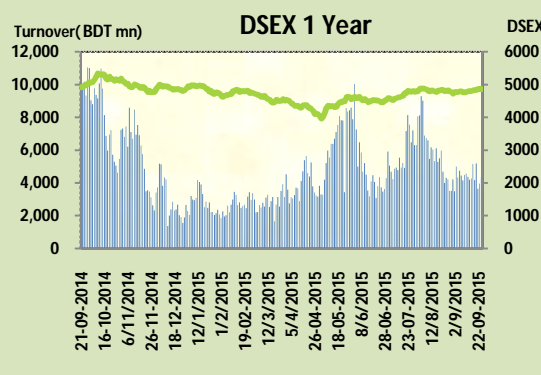


DSEX	4,853.17	-0.28%	Issues Traded	Advanced	Declined	Unchanged
Turnover (BDT mn)	4,348.90	10.0%		111	175	33

Five days gaining streak defeated today by a marginal correction with a slightly improved turnover. Investors participation increased today as turnover broke the 4 billion mark after two trading sessions. Most of the major sectors observed sale domination as marginal gain provoked the investors to pick it up after the eid vacation. The premier bourse of the nation opened with positive mood, couldn't sustain long and went down almost 27 points and again it tried to recover but failed to cross the green line. Among the major sectors Bank & NBFI were gainer. Ceramics was the worst loser followed by Cement & Telecom

The general gauge DSEX ended at 4853.17 with a decline of -0.3% which cut 13.58 points from the broad DSEX. The Turnover advanced slightly by +10% which was only 396 Million BDT healthier than that of previous day and finally finished the mark at 4348.90 million BDT. A total of 111 issues advanced with 175 declined and 33 remained unchanged. Sectors that improved were: Bank (+0.4%) NBFI (+0.9%) Miscellaneous (+0.2%) Paper (+0.6%)& sectors that declined were: Ceramics (-2.7%) Cement (-1.7%) Engineering (-0.8%) Pharmaceuticals (-0.2%) Telecom (-1.2%) Power (-0.7%) Textile (-0.45) Service (-1.3%).

FARCHEM topped in the Volume chart with a turnover of 28.51 BDT crore. EXIM1STMF ranked top gainer chart with a price hike of +9.8% and 7THICB topped in the loser chart with a decline of -9.3% from its prevailing price. DBH led the way in the index mover chart while GP played the shatter part.



Index Scenario

	INDEX	Change	% Changes
DSEX	4853.17	(13.58)	-0.3%
DSES	1186.07	(6.75)	-0.6%
DS30	1854.03	(9.70)	-0.5%

Market Highlights

DSEX 52 week H/L	5334/3960	Market P/E (LTM)	15.99
DSEX Week H/L	4867/4830	M.Cap (mn)	3363990.0
Group Performances			
Category	Mkt Cap (mn.)	Δ % M.Cap	Turnover BDT (mn)
Group A	2,636,298.48	-0.5%	3,961.19
Group B	14,554.94	0.0%	90.64
Group N	30,250.66	-0.1%	183.31
Group Z	25,498.79	-1.0%	28.94

Turnover Scenario

Today's Turnover (mn.)	Change In BDT (mn.)	% Change
4348.90	396	10.0%

Top Ten Volume (in BDT. crore)

Stock	TT	YT	AT	% Δ in Turnover	TT/AT	CP	YP	% Δ P	Number of shares	Public Holding
FARCHEM	28.51	6.37	8.14	347.8%	250.4%	52.3	48.7	7.4%	109,237,878.0	12%
ACI	18.97	7.40	6.43	156.4%	194.9%	585.8	577	1.5%	39,553,240.3	27%
SQURPHARMA	14.57	10.63	13.00	37.1%	12.1%	250.6	250.4	0.1%	623,586,546.0	9%
ISLAMIBANK	12.55	9.88	9.03	27.0%	39.0%	30.7	30.8	-0.3%	1,609,990,668.0	21%
SAIFPOWER	11.55	17.20	5.67	-32.9%	103.5%	87.6	87.8	-0.2%	70,985,380.0	19%
BSRMSTEEL	10.58	12.19	7.03	-13.2%	50.4%	93.9	95.5	-1.7%	341,775,000.0	13%
GP	10.33	10.81	7.17	-4.4%	44.1%	290.8	294.6	-1.3%	1,350,300,022.0	4%
SAPORTL	9.94	9.47	5.07	5.0%	96.0%	59.5	60.5	-1.7%	171,762,330.6	24%
IDLC	9.76	14.73	4.56	-33.8%	113.9%	64.3	64.3	0.0%	251,367,187.5	22%
APOLOISPAT	9.65	5.76	5.25	67.4%	83.6%	22.9	22.6	1.3%	287,500,000.0	36%

TT= Today's Turnover in crore, YT= Yesterday's Turnover in Crore, AT= Average of Last 20 day's Turnover, CP= Current Price, YP= Yesterday's Price, % Δ P= percentage change in price

Top Ten Gainer						Top Ten Loser					
Stock	CP	YP	AP	% Δ P	% Δ in P from AP	Stock	CP	YP	AP	% Δ P	% Δ in P from AP
EXIMISTMF	5.6	5.1	5.34	9.8%	4.9%	7THICB	103.00	113.50	107.30	-9.3%	-4.0%
FARCHEM	52.3	48.7	52.12	7.4%	0.3%	3RDICB	290.00	312.00	310.58	-7.1%	-6.6%
ARAMIT	380.4	357.7	322.615	6.3%	17.9%	BDAUTOCA	37.30	39.40	37.80	-5.3%	-1.3%
DBH	107.1	101.5	97.25	5.5%	10.1%	APEXFOODS	142.60	149.20	149.64	-4.4%	-4.7%
AIBLISTMF	6.9	6.6	6.09	4.5%	13.3%	ISNLTD	11.30	11.80	11.00	-4.2%	2.8%
LEGACYFOOT	32.3	30.9	32.06	4.5%	0.7%	ICBIBANK	4.80	5.00	4.67	-4.0%	2.9%
PRAGATIINS	27.7	26.5	26.635	4.5%	4.0%	BEACHHATCI	17.30	18.00	20.65	-3.9%	-16.2%
FUWANGCER	14.5	13.9	14.01	4.3%	3.5%	NFML	20.20	21.00	22.75	-3.8%	-11.2%
MONNOCERA	45.6	43.8	46.775	4.1%	-2.5%	APEXSPINN	78.30	81.40	75.21	-3.8%	4.1%
STANCERAM	50.1	48.2	50.86	3.9%	-1.5%	UNITEDINS	25.30	26.30	25.36	-3.8%	-0.2%

AP= Average Price of last 20 day,% Δ in P from AP= percentage change in price from the 20-day average price

Industry /Sectors overview (Amounts in BDT. Crore)											
Sector	Trade Volume		MKT Turnover %		% Δ in Turnover	Market Capitalization		% of Total MC		% Δ in MC	
	Today	Yesterday	Today	Yesterday		Today	Yesterday	Today	Yesterday		
Bank	37.30	32.79	0.09	0.09	13.7%	40727.67	40571.33	15.07%	14.94%	0.4%	
Cement	13.80	35.08	0.03	0.09	-60.7%	19163.08	19487.54	7.09%	7.17%	-1.7%	
Ceramics	7.90	3.24	0.02	0.01	144.2%	2851.17	2926.78	1.06%	1.08%	-2.6%	
Engineering	63.67	59.85	0.15	0.16	6.4%	15533.02	15663.10	5.75%	5.77%	-0.8%	
Food & Allied Product	16.78	14.49	0.04	0.04	15.8%	24359.88	24515.09	9.02%	9.02%	-0.6%	
Insurance	5.39	4.10	0.01	0.01	31.5%	7270.19	7307.17	2.69%	2.69%	-0.5%	
IT	1.81	1.44	0.00	0.00	25.0%	550.75	551.85	0.20%	0.20%	-0.2%	
Jute	0.60	0.38	0.00	0.00	57.8%	103.28	102.99	0.04%	0.04%	0.3%	
Miscellaneous	28.47	15.30	0.07	0.04	86.0%	8989.94	8973.89	3.33%	3.30%	0.2%	
Mutual Fund	7.30	4.78	0.02	0.01	52.7%	3466.15	3466.02	1.28%	1.28%	0.0%	
NBFI	31.22	33.37	0.07	0.09	-6.4%	8742.98	8668.07	3.24%	3.19%	0.9%	
Paper & Printing	1.08	0.72	0.00	0.00	50.7%	228.62	227.26	0.08%	0.08%	0.6%	
Pharmaceuticals & Chemicals	95.14	56.03	0.22	0.15	69.8%	42172.02	42250.67	15.61%	15.55%	-0.2%	
Power & Energy	46.45	41.36	0.11	0.11	12.3%	39318.14	39580.35	14.55%	14.57%	-0.7%	
Service & Real Estate	23.00	28.33	0.05	0.08	-18.8%	2126.59	2154.49	0.79%	0.79%	-1.3%	
Tannery	3.85	3.55	0.01	0.01	8.5%	2586.44	2627.54	0.96%	0.97%	-1.6%	
Telecommunication	10.33	13.68	0.02	0.04	-24.5%	41098.67	41611.79	15.21%	15.32%	-1.2%	
Textile	22.60	18.98	0.05	0.05	19.1%	8566.88	8600.91	3.17%	3.17%	-0.4%	
Travel & Leisure	7.94	6.99	0.02	0.02	13.5%	2353.63	2358.75	0.87%	0.87%	-0.2%	

MC= Market Capitalization, % Δ in Turnover= change in turnover from last day, % Δ in MC= change in Market cap from last day

Index Movers	Index Shakers	Sector wise P/E			
DBH	GP	Bank	8.83	NBFI	36.85
FARCHEM	LAFSURCEML	Cement	37.84	Paper & Printing	82.82
BRACBANK	BATBC	Ceramics	40.65	Pharmaceuticals & Chemicals	28.01
ACI	RAK CERAMIC	Engineering	38.74	Power & Energy	16.90
BERGERPBL	BSRMLTD	Food & Allied Product	35.16	Service & Real Estate	45.01
TITASGAS	MARICO	Insurance	14.71	Tannery	34.78
PUBALIBANK	UPGDCL	IT	17.65	Telecommunication	26.35
IFADAUTOS	POWERGRID	Jute	173.37	Textile	17.68
BANKASIA	BSRMSTEEL	Miscellaneous	35.13	Travel & Leisure	15.20
ALARABANK	KPCL				

Important News

Company News:

FARCHEM: Board Meeting schedule under LR 19(1): As per Regulation 19(1) of the Dhaka Stock Exchange (Listing) Regulations, 2015, the Company has informed that a meeting of the Board of Directors will be held on October 06, 2015 at 3:30 PM to consider, among others, audited financial statements of the Company for the year ended on June 30, 2015.

ABBANK: NOC from Bangladesh Bank and revision of some features: With reference to their earlier news (disseminated by DSE on 25.08.15), the Company has further informed that Bangladesh Bank has issued a NOC in favor of raising Tier - II capital by AB Bank Limited, amounting to Tk. 400.00 crore only through issuance of 7 years Non - Convertible, Unsecured, Fully - redeemable, Coupon (range 11.50% - 13.50% or as fixed by the regulators) bearing AB Bank Subordinated Bond - II through Private Placement. (cont.)

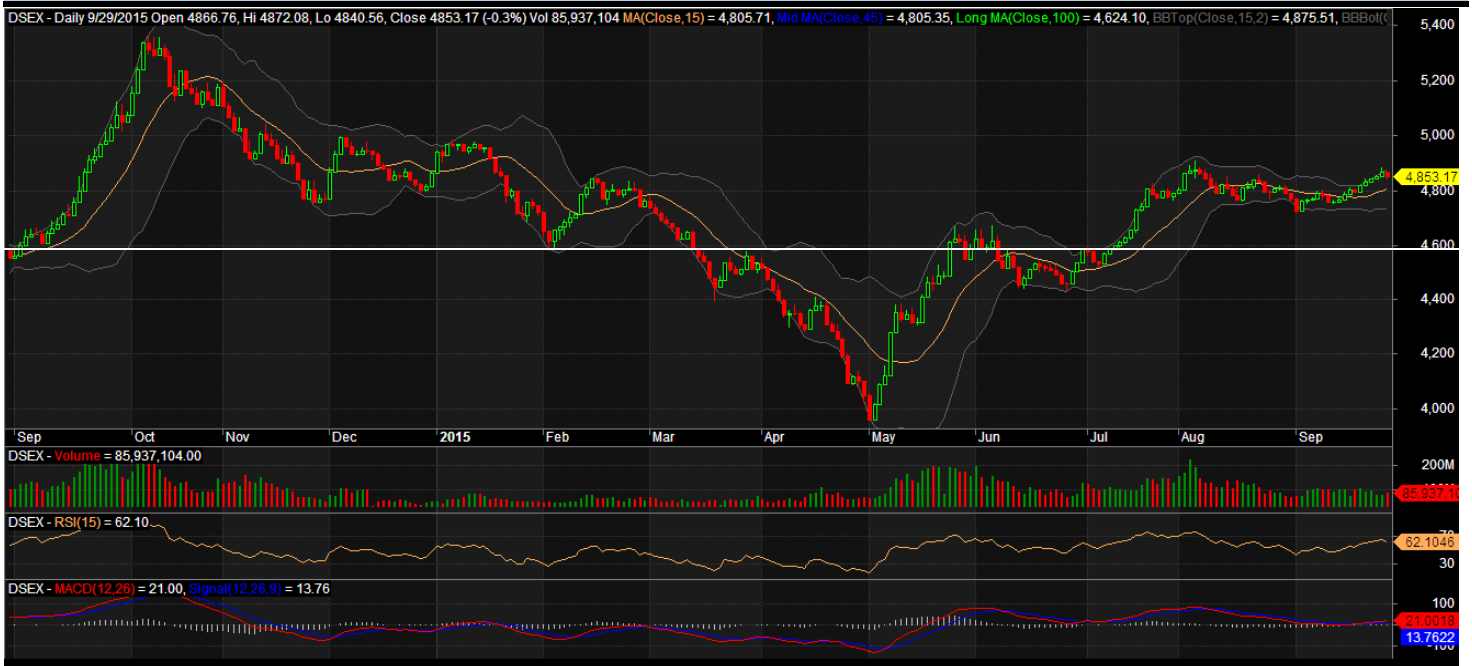
(continuation news of ABBANK): However Bangladesh Bank has revised and approved the following features of the Non - convertible Subordinated Bond: Reference Rate: Average 6 months FDR rate of Private Commercial Banks (PCBs) instead of previously proposed 5 year BGTB cut - off yield; Coupon Margin: 2.50% instead of previously proposed 3.00%, Launching Rate: 10.50% instead of previously proposed "None", Coupon Range: 10.50% - 13.50% instead of previously proposed 11.50% - 13.50%. (end)

Recent Dividend Declaration

Ticker	Dividend	Record Date
Matin Spinning Mills Ltd.	27% C	08.10.15

Note: C= cash Dividend, B= Bonus Dividend, R=Right, N/A=NotApplicable

DSEX Technical Graph for last one year



MTB CAPITAL LIMITED

Corporate head office

Level: 3, MTB Tower, 111, Kazi Nazrul Islam Avenue, Dhaka

Phone: 8321714, Fax: 8321543

www.mtbcap.com

A mutual Trust Bank Company

you can invest with US

Disclaimer

This report has been prepared by the MTB Capital Limited (MTBCL) on the basis of available information in the market and it is provided for the purposes only. It is not to be used as an offer for buying or selling any instruments. If anyone takes any action relying on this information, shall be responsible solely by him/her self for any consequences. The best care has been taken to make the report informative. MTBCL doesn't give any warrant or guarantee that the report or such information is fully accurate. The information that are provided here is the exclusive property of MTBCL and can not be distributed without prior consent of MTBCL.