

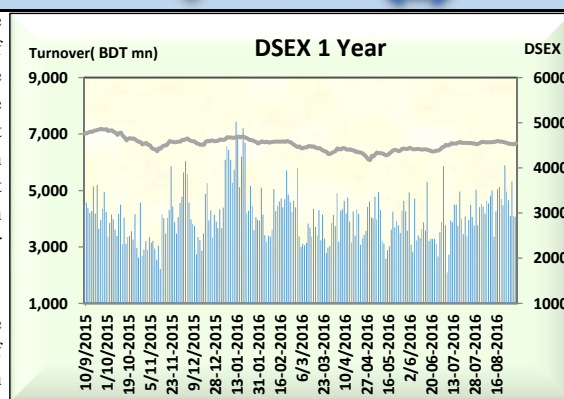
# Today's Market Overview



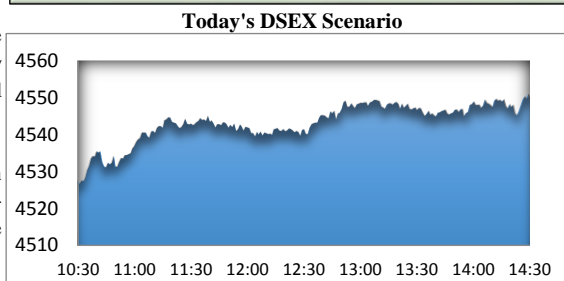
Thursday, September 01, 2016

<b>DSEX</b>	4,549.04	0.50%	<b>Issues Traded</b>	↑ <b>Advanced</b> 159	↓ <b>Declined</b> 95	↔ <b>Unchanged</b> 64
<b>Turnover (BDT mn)</b>	4,072.23	-0.53%				

Market continued the gaining streak for the consecutive two days with a slightly declined turnover. The premier bourse of the nation opened with a positive mood and continued to gain with the progression of time, finally closed in flying high. Investors' sentiment was tended towards market as downfall cycle ended last day. Investors participation was reluctant due to upcoming festival vacation but active participators tried to take position in all prominent and major sectors as sellers were bit unwilling to put pressure. Major concentration in big cap stocks like Bank, Cement, Power, Engineering Power though Pharmaceuticals and Telecom frustrated investors. Turnover succeed to cross only 4 billion mark but improvement in DSEX as well as in some big cap stocks' performances optimized confidence level. Both the indices DS30 & DSES the shariah based index performed positively. Travel was the best gainer followed by NBFI & Power while Paper was the worst loser followed by Mutual Fund.



The general gauge DSEX ended at 4549.04 with an advance of +0.50% which added 22.46 points to the broad DSEX. The Turnover declined slightly by -0.53% which was 22 Million BDT poorer than that of previous day and finally finished the mark at 4072.23 million BDT. A total of 159 issues advanced with 95 declined & 64 remained unchanged. Sectors that improved were: Bank (+0.67%) Cement (+0.72%) Ceramics (+0.16%) Engineering (+0.53%) Food (+0.38%) Insurance (+0.45%) IT (+0.16%) Jute (+0.64%) NBFI (+1.04%) Pharmaceuticals (+0.28%) Power (+0.81%) Service (+0.17%) Tannery (0.79%) Telecom (+0.14%) Textiles (+0.77%) Travel (+1.19%) & Sectors that declined were: Mutual Fund (-0.96%) Paper (-1.13%).



SPCL topped in the Volume chart with a turnover of 28.23 BDT crore. SHYAMPSUG ranked top in gainer chart with a price hike of +9.8% and ICBAMCL2ND topped in the loser chart with a decline of -10.0% from its prevailing price. ISLAMIBANK led the way in the index mover chart while PXPHERMA played the shatter part.

Index Scenario				Market Highlights				
	INDEX	Change	% Changes	DSEX 52 week H/L	4874/3960	Market P/E (LTM)	13.87	
DSEX	4549.04	22.46	0.50%	DSEX Week H/L	4564/4523	M.Cap	3205072.5	
DSES	1103.33	5.85	0.53%	Group Performances				
DS30	1744.62	9.26	0.53%	Category	Mkt Cap (mn.)	Δ % M.Cap	Turnover BDT (mn)	Δ % Turnover
Turnover Scenario				Group A	2,444,794.61	0.4%	3,434.78	-0.1%
Today's Turnover (mn.)	Change In BDT (mn.)	% Change		Group B	11,102.17	0.9%	90.50	25.3%
4072.23	(22)	-0.53%		Group N	64,769.25	-1.6%	342.33	9.0%
				Group Z	38,568.13	0.6%	56.41	-3.3%

Top Ten Volume (in BDT. crore)										
Stock	TT	YT	AT	% Δ in Turnover	TT/AT	CP	YP	% Δ P	Number of shares	Public Holding
SPCL	28.23	18.13	12.31	55.7%	129.4%	166.4	162.7	2.3%	274,244,180.0	9%
MJLBD	18.60	8.60	15.15	116.3%	22.8%	115	112.5	2.2%	362,944,698.6	5%
DOREENPWR	13.70	7.76	4.57	76.4%	199.8%	65.6	62.9	4.3%	15,218,280.0	19%
TRUSTBANK	10.26	1.71	2.89	501.1%	254.4%	22.9	22.3	2.7%	341,775,000.0	13%
NLTUBES	8.71	11.74	11.99	-25.8%	-27.3%	127.9	131.7	-2.9%	190,686,141.8	9%
BDCOM	8.21	9.75	2.32	-15.8%	254.6%	25.7	25.3	1.6%	276,739,950.1	61%
BSRMLTD	7.93	5.15	10.39	54.2%	-23.7%	171.7	169.8	1.1%	137,132,037.0	19%
IPDC	7.90	10.29	5.34	-23.2%	48.1%	37.7	36.6	3.0%	190,417,988.2	27%
BSC	7.44	2.74	7.03	171.6%	5.8%	420.3	412.5	1.9%	294,400,000.0	24%
SQRPHARMA	7.17	16.35	9.63	-56.1%	-25.5%	264.6	262.3	0.9%	54,285,000.0	38%

TT= Today's Turnover in crore, YT= Yesterday's Turnover in Crore, AT= Average of Last 20 day's Turnover, CP= Current Price, YP= Yesterday's Price, % Δ P= percentage change in price

**Top Ten Gainer****Top Ten Loser**

Stock	CP	YP	AP	% Δ P	% Δ in P from AP	Stock	CP	YP	AP	% Δ P	% Δ in P from AP
SHYAMPSUG	14.6	13.3	15.005	9.8%	-2.7%	ICBAMCL2ND	4.50	5.00	5.08	-10.0%	-11.4%
ZEALBANGLA	18	16.4	19.81	9.8%	-9.1%	ICB1STNRB	19.90	22.10	21.31	-10.0%	-6.6%
JUTESPINN	60	54.8	63.805	9.5%	-6.0%	ICB2NDNRB	7.50	8.30	8.12	-9.6%	-7.6%
PRIMEINSUR	15.5	14.3	13.53	8.4%	14.6%	IFILISLMF1	6.60	7.30	7.05	-9.6%	-6.3%
SEBL1STMF	11.6	10.8	11.16	7.4%	3.9%	PRIME1ICBA	4.90	5.40	5.22	-9.3%	-6.1%
APEXFOODS	25.1	158.9	137.715	6.8%	23.2%	ICBSONALI1	6.10	6.70	6.41	-9.0%	-4.8%
FASFIN	8.2	7.7	7.67	6.5%	6.9%	BDTHAI	22.00	24.10	23.96	-8.7%	-8.2%
MHSML	18.3	17.2	16.765	6.4%	9.2%	ICB3RDNRB	4.20	4.60	4.67	-8.7%	-10.0%
MERCINS	13.5	12.7	11.12	6.3%	21.4%	MODERNDYE	270.20	295.40	221.95	-8.5%	21.7%
ISLAMIINS	16.7	15.8	14.61	5.7%	14.3%	PF1STMF	4.40	4.80	4.77	-8.3%	-7.7%

AP= Average Price of last 20 day,% Δ in P from AP= percentage change in price from the 20-day average price

**Industry /Sectors overview (Amounts in BDT. Crore)**

Sector	Trade Volume		MKT Turnover %		% Δ in Turnover	Market Capitalization		% of Total MC		% Δ in MC
	Today	Yesterday	Today	Yesterday		Today	Yesterday	Today	Yesterday	
Bank	37.57	28.17	0.10	0.07	33.39%	41955.05	41676.12	16.42%	16.38%	0.67%
Cement	13.37	10.01	0.03	0.03	33.54%	14817.66	14711.22	5.80%	5.78%	0.72%
Ceramics	2.36	1.65	0.01	0.00	42.61%	2330.18	2326.45	0.91%	0.91%	0.16%
Engineering	61.23	50.81	0.16	0.13	20.52%	16101.11	16016.07	6.30%	6.30%	0.53%
Food & Allied Product	17.00	36.28	0.04	0.09	-53.14%	22244.94	22161.48	8.70%	8.71%	0.38%
Insurance	11.37	19.03	0.03	0.05	-40.24%	6673.11	6643.30	2.61%	2.61%	0.45%
IT	12.10	15.47	0.03	0.04	-21.79%	912.67	911.25	0.36%	0.36%	0.16%
Jute	1.63	1.71	0.00	0.00	-4.66%	106.37	105.69	0.04%	0.04%	0.64%
Miscellaneous	19.43	15.60	0.05	0.04	24.57%	8438.26	8436.42	3.30%	3.32%	0.02%
Mutual Fund	2.34	7.55	0.01	0.02	-68.97%	3826.94	3864.13	1.50%	1.52%	-0.96%
NBFI	32.48	34.86	0.08	0.09	-6.81%	8162.18	8077.91	3.19%	3.18%	0.04%
Paper & Printing	1.04	0.63	0.00	0.00	65.63%	163.37	165.24	0.06%	0.06%	-0.13%
Pharmaceuticals & Chemicals	42.16	63.31	0.11	0.16	-33.40%	43449.42	43327.15	17.00%	17.03%	0.28%
Power & Energy	80.06	54.08	0.20	0.14	48.03%	35613.25	35327.00	13.93%	13.89%	0.81%
Service & Real Estate	5.18	4.63	0.01	0.01	11.86%	1618.29	1615.53	0.63%	0.64%	0.17%
Tannery	3.86	3.08	0.01	0.01	25.33%	2298.37	2280.29	0.90%	0.90%	0.79%
Telecommunication	4.24	5.90	0.01	0.02	-28.23%	37504.35	37451.68	14.67%	14.72%	0.14%
Textile	38.97	31.51	0.10	0.08	23.66%	7526.91	7469.29	2.94%	2.94%	0.77%
Travel & Leisure	4.18	1.34	0.01	0.00	210.87%	1840.58	1818.99	0.72%	0.72%	0.19%

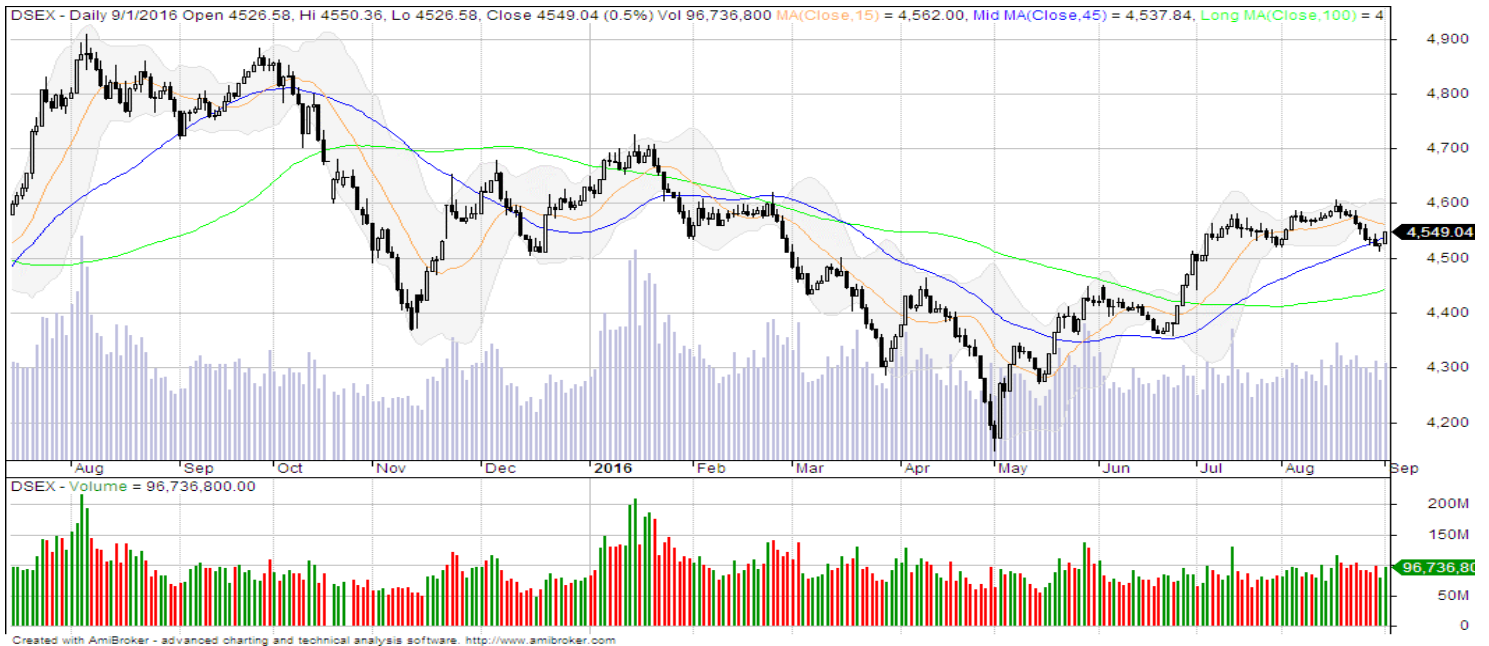
MC= Market Capitalization, % Δ in Turnover= change in turnover from last day, % Δ in MC= change in Market cap from last day

Index Movers	Index Shakers	Sector wise P/E (Fd.)
ISLAMIBANK	BXPHERMA	Bank 9.30
SQURPHARMA	BSCCL	Cement 34.27
UPGDCL	BRACBANK	Ceramics 39.71
MJLBD	DBH	Engineering 34.88
GP	BDTHAI	Food & Allied Product 25.03
OLYMPIC	GREENDELT	Insurance 11.65
BSRMSTEEL	NLTUBES	IT 41.41
SPCL	CVOPRL	Jute 572.50
LAFSURCEML	ICB2NDNRB	Miscellaneous 17.27
BSRMLTD	BEXIMCO	NBFI 14.31
		Paper & Printing 128.67
		Pharmaceuticals & Chemicals 25.75
		Power & Energy 18.16
		Service & Real Estate 24.81
		Tannery 34.52
		Telecommunication 21.15
		Textile 16.94
		Travel & Leisure 19.86

**Important News****Recent Dividend Declaration****Company News:**

Ticker	Dividend	Record Date
Apex Tannery Limited	40% C	08.09.2016
Meghna Life Insurance Company Limited	20% C & 5% B	05.09.2016
Bangladesh Submarine Cable Company Limited	10% C	07.09.2016
DBH First Mutual Fund	5% C	01.09.2016
Gemini Sea Food Ltd.	20% C & 50% B	07.09.2016

Note: C= cash Dividend, B= Bonus Dividend, R=Right, N/A=NotApplicable

**DSEX Technical Graph for last one year****MTB CAPITAL LIMITED**

Corporate head office

Level: 3, MTB Tower, 111, Kazi Nazrul Islam Avenue, Dhaka

Phone: 8321714, Fax: 8321543

[www.mtbcap.com](http://www.mtbcap.com)*A Mutual Trust Bank Company**you can invest with us***Disclaimer**

This report has been prepared by the MTB Capital Limited (MTBCL) on the basis of available information in the market and it is provided for the purposes only. It is not to be used as an offer for buying or selling any instruments. If anyone takes any action relying on this information, shall be responsible solely by him/her self for any consequences. The best care has been taken to make the report informative. MTBCL doesn't give any warrant or guarantee that the report or such information is fully accurate. The information that are provided here is the exclusive property of MTBCL and can not be distributed without prior consent of MTBCL.